

ALLAN HERSCHELL

CHANCE
MANUFACTURING CO., INC.

Number: 8
Date: 6-20-71

Supersedes:
Number:
Date:

Service Information

Ride: KIDDLE BOAT RIDE MODEL "C" P

Subject: ERECTION AND CARE

REFERENCES

- Blueprint KBC-100-Assembly Dwg.
- Blueprint KB-100-P Parts Number Dwg.
- Blueprint KT-101 Foundation Dwg.

"SUGGESTED CHEMICAL TREATMENT OF WATER"

ERECTION AND CARE OF KIDDLE BOAT RIDE MODEL "C"

Refer to print number KBC-100 for general arrangement of parts and to number KB-100-P for part number identification and lubrication instructions.

Select a spot that is reasonably level, especially for the center of the ride and the tank assembly.

Place the circular centerpole (KB-117) into position so that the motor will be located near light pole #1 (Switch Pole) to suit operator's convenience.

Place the drive unit into position and bolt it down tightly after pinion (KA-147) is properly meshed with ring gear. Check the "V" belts on the drive for proper tension. These have been set correctly at the factory, but when new, adjustment should be made frequently until the initial stretch has been taken up. These are not to be too tight and need very little attention during the season. **CAUTION:** Any adjustment of the belt drive should be done with the motor. Do not change the position of the gear reducer.

Fasten the centerpole assembly KB-118 securely to the centerpole base assembly (KB-117) by means of the four studs. Position these assemblies so that their markings match.

Place the ring gear (KA-153) on top of the 6" dia. fiber collar of centerpole assembly (KB-118).

Level the base (KB-117) and plumb the centerpole (KA-154-2) using shims under the circular base (KB-117) if necessary. On park rides, four 7/8" dia. holes are provided in the base ring (KB-117) which can be used for bolting down after leveling.

Factory and General Office: 4219 Irving, Box 2397 Wichita, Kansas 67201

Area Code (316) 942-7411

Sales Office:

103 Ross Ave., Dallas, Texas 75202

Area Code (214) 742-3802

Use expansion bolts if ride is mounted on a concrete slab (KT-101).

Attach three centering rods (KB-115 and KB-116) over lugs on base ring (KB-117) and to tank sections as shown on assembly drawing KBC-100. Bolt six tank sections together, after leveling each section as it is placed, using the level furnished with the ride.

Insert light and switch pole marked #1 into holes of the tank section located nearest to motor. Assemble remaining cornice uprights (KB-119).

The cornice sections are numbered according to the upright pipes to which they attach and must be put on in order of their numbers. Attach the head shields. The spot light brackets are also marked to suit the uprights. These must also be placed in their proper order. Then plug in all plugs to complete the circuit.

Attach the switch box to #1 upright and make up the lead connections and connect. Twist lock connectors complete are furnished for these connections.

Spread tent top over the centerpole. Place the tent pole on top of the centerpole and raise the tent about halfway. When in this position hook the outside edge of the tent in the loops provided on the inside of the cornice, then raise the tent to its proper height.

Place 6 sweep arms (KB-113) between angles on sweep plate (KB-112) between sweep arms (KB-113) and retain with $3/8"$ x $1 1/2"$ long cotter pins.

Fasten 6 boats (KB-106) to sweep arms with $1/2"$ x $4"$ long cotter pins.

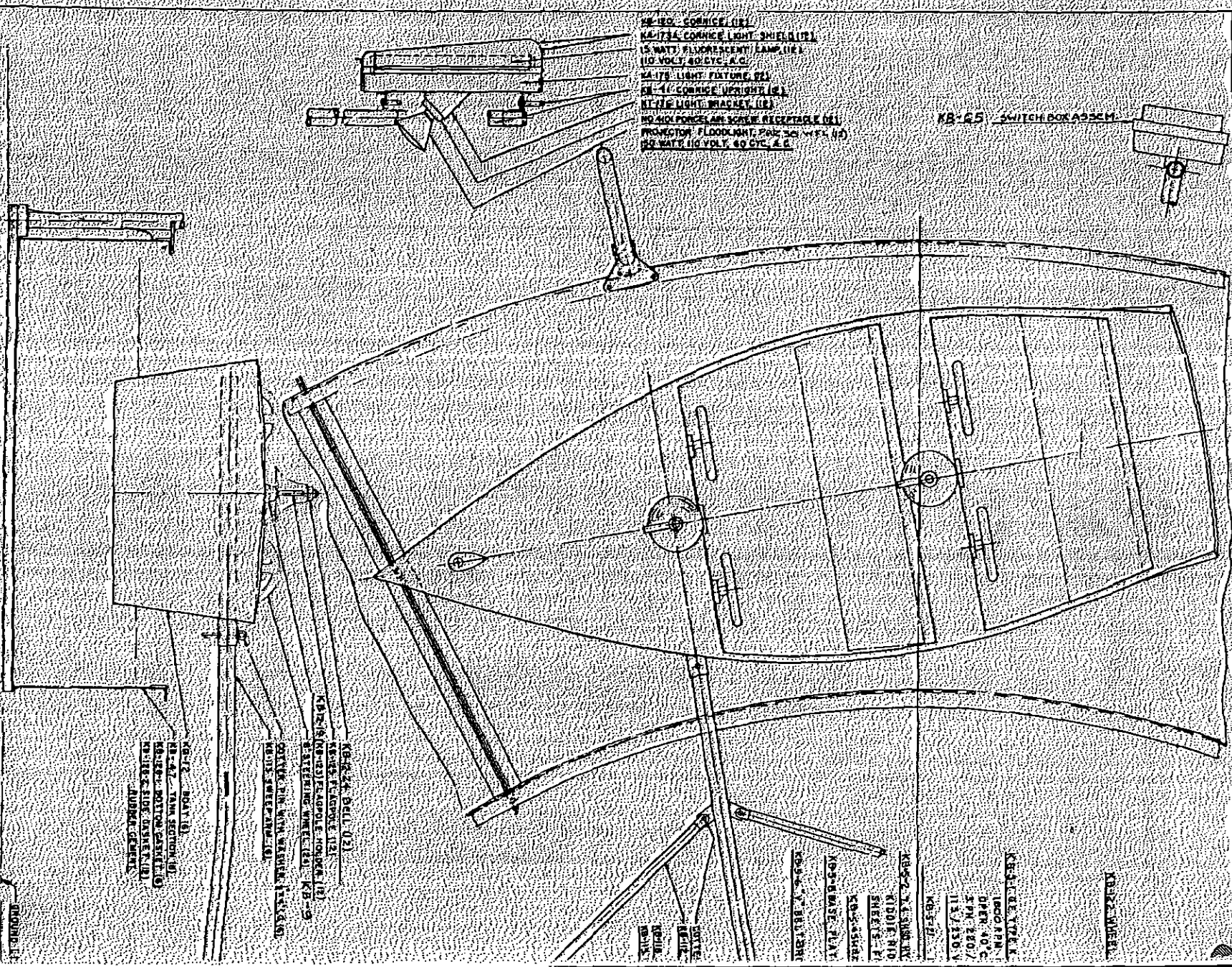
CAUTION: The wiring on this ride has been arranged for a separate connection to the lights from that of the drive motor. The ride is designed to run on 60-cycle 220 volt current (or 110 volt). Satisfactory results might not be obtained on lines having considerable drop in voltage, especially when operating on 110 volt line, and to insure proper operation, voltage of 105 to 115 must be maintained.

Motor connections are for 220 volts when ride leaves factory. If 110 volt current must be used, motor connections must be changed to suit wiring diagram on motor nameplate.

Operate the lighting only on 110 volt, 60-cycle current.

KA-180 CORNICE (12)
 KA-173A CORNICE LIGHT SHIELD (12)
 15 WATT FLUORESCENT LAMP (12)
 110 VOLT 60 CYC. A.C.
 KA-178 LIGHT FIXTURE (2)
 KA-176 CORNICE UPRIGHT (12)
 KA-177 LIGHT BRACKET (12)
 NO 400 PORCELAIN SCREW RECEPTACLE (12)
 PROJECTION FLOODLIGHT, Pat. Ser. 1754, 112
 60 WATT 110 VOLT 60 CYC. A.C.

KB-65 SWITCH BOX ASSEM.



KB-47 BOAT (1)
 KB-48 TANK SECTION (1)
 KB-49 MOTOR ASSEMBLY
 KB-50 FLOO ASPEN (1)
 NUMA GEMEK

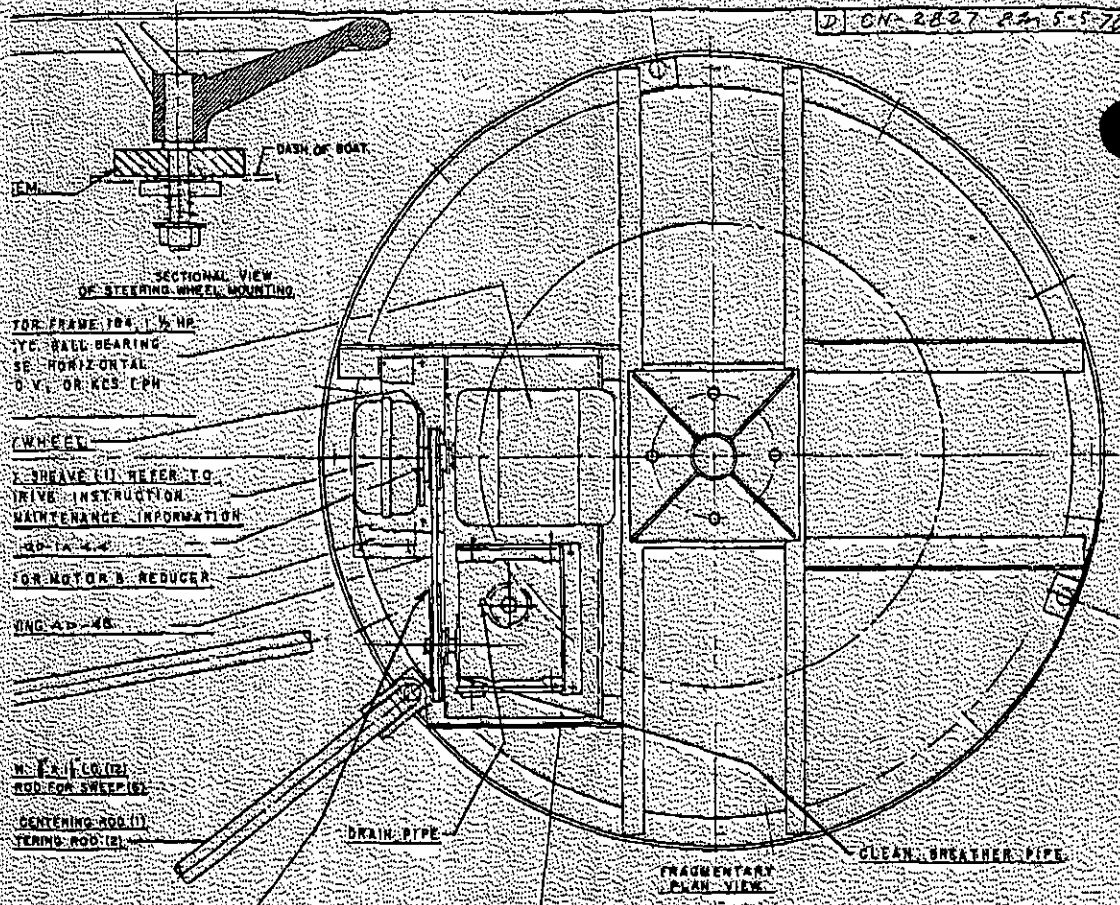
KB-24 BELL (2)
 KB-25 FULCRUM (12)
 KB-26 (OVER) FULCRUM HANGER (12)
 8 STEERING WHEEL (2) KB-5
 DRIVE PIN WITH WHEEL (12) (1)
 WOOD WHEEL (12) (1)

KB-2 A.C. SWITCH
 1100 E. RID
 SHEETS 7
 KB-5102
 KB-5103
 KB-5104
 KB-5105
 KB-5106
 KB-5107
 KB-5108
 KB-5109
 KB-5110
 KB-5111
 KB-5112
 KB-5113
 KB-5114
 KB-5115
 KB-5116
 KB-5117
 KB-5118
 KB-5119
 KB-5120
 KB-5121
 KB-5122
 KB-5123
 KB-5124
 KB-5125
 KB-5126
 KB-5127
 KB-5128
 KB-5129
 KB-5130
 KB-5131
 KB-5132
 KB-5133
 KB-5134
 KB-5135
 KB-5136
 KB-5137
 KB-5138
 KB-5139
 KB-5140
 KB-5141
 KB-5142
 KB-5143
 KB-5144
 KB-5145
 KB-5146
 KB-5147
 KB-5148
 KB-5149
 KB-5150
 KB-5151
 KB-5152
 KB-5153
 KB-5154
 KB-5155
 KB-5156
 KB-5157
 KB-5158
 KB-5159
 KB-5160
 KB-5161
 KB-5162
 KB-5163
 KB-5164
 KB-5165
 KB-5166
 KB-5167
 KB-5168
 KB-5169
 KB-5170
 KB-5171
 KB-5172
 KB-5173
 KB-5174
 KB-5175
 KB-5176
 KB-5177
 KB-5178
 KB-5179
 KB-5180
 KB-5181
 KB-5182
 KB-5183
 KB-5184
 KB-5185
 KB-5186
 KB-5187
 KB-5188
 KB-5189
 KB-5190
 KB-5191
 KB-5192
 KB-5193
 KB-5194
 KB-5195
 KB-5196
 KB-5197
 KB-5198
 KB-5199
 KB-5200

KB-22 WHEEL

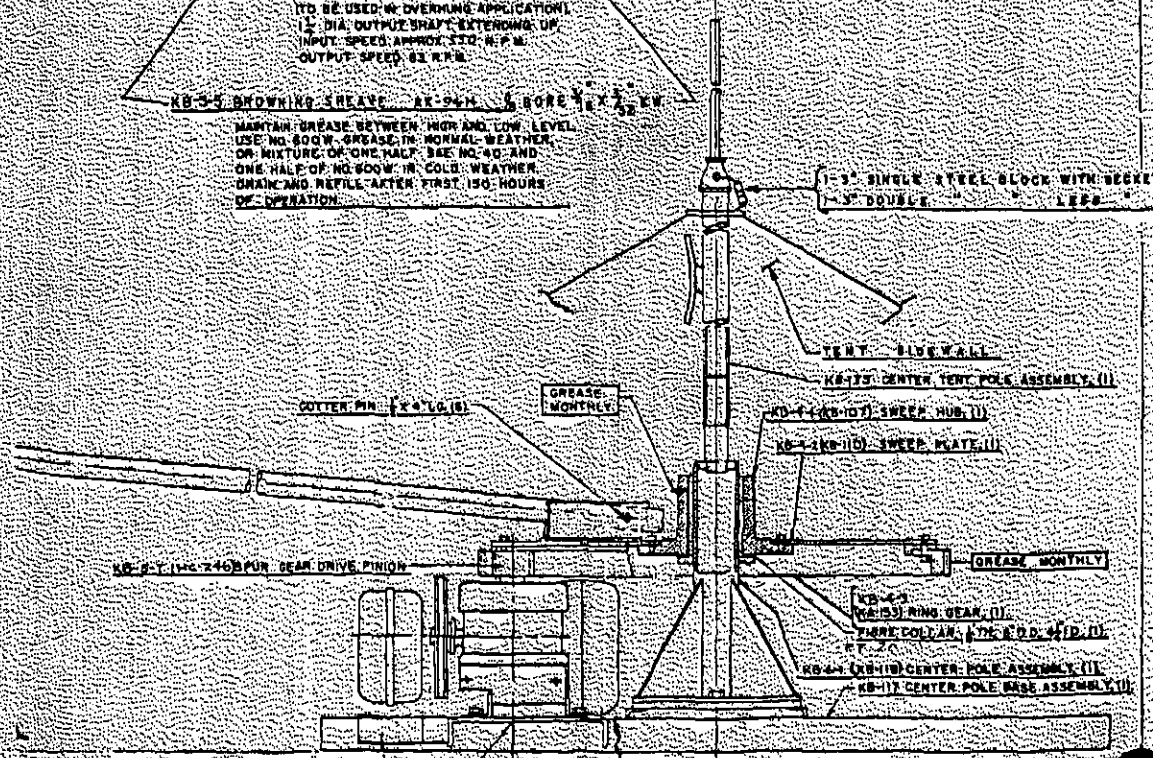
WHEN ORDERING PARTS
 SPECIFY YOUR PURCHASED RIDE SIZE
 PART NUMBER, DESIGN, AND QUANTITY

99850 OF RIDE IS 1.8.8.8



KB-5 LINK-BELT WORM REDUCER
 SIZE: 0-300 TONNAGE TO 1 R.H. ASSEMBLY, TORQUE APPLICATION TO BE USED IN OVERHUNG APPLICATION.
 1 1/2" DIA. OUTPUT SHAFT EXTENDING UP
 INPUT SPEED APPROX. 320 R.P.M.
 OUTPUT SPEED: 82 R.P.M.

KB-5-5 SHOWING GREASE RE-PAK 1/2 GALLON 1/2" X 1/2" X 1/2" IN
 MAINTAIN GREASE BETWEEN HIGH AND LOW LEVEL. USE NO. 800W GREASE IN NORMAL WEATHER OR MIXTURE OF ONE HALF SAE NO. 40 AND ONE HALF OF NO. 800W IN COLD WEATHER. DRAIN AND RE-FILL AFTER FIRST 150 HOURS OF OPERATION.



ALL CAN-AM MACHINERY CO. INC.
 10000 BOYD AVE. BOYD, MINN.
 PART NUMBERS AND LUBRICATION INSTRUCTIONS
 SEE DRAWING FILES
 KB100-PD