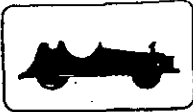
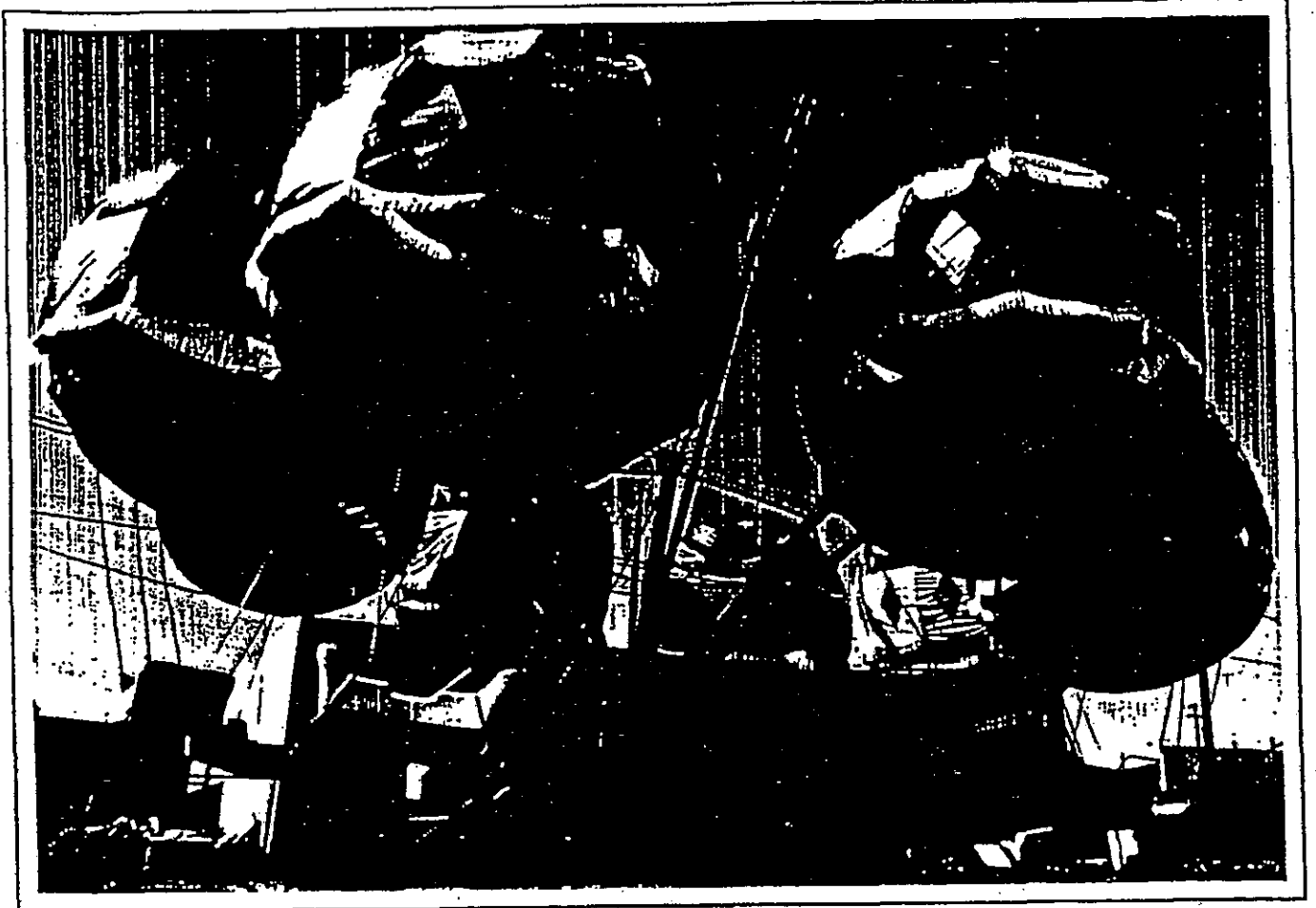


Balloon Race/ Red Baron B+K



BRADLEY & KAYE

1524 WEST 15TH STREET • LONG BEACH, CALIFORNIA 90813 • (213) 436-0022 436-6880



CHILDREN'S BALLOON FLITE

Eight brightly colored balloons support wicker — finished fiberglass baskets each carrying 4 passengers. Arranged in a circle, they swing gently around while the center raises and tilts to give a smooth "Wave Swinger" action.

Balloon vehicles: 8

Seating: 32

Capacity: 640/hour

Overall diameter of ride to fence: 54'

Power Requirement: 10½ H.P. 3 phase

AMUSEMENT RIDES

INVENTION • DEVELOPMENT • PRODUCT DESIGN STYLING • CONSULTATION • ORNAMENTATION



BRADLEY & KAYE

1524 WEST 15TH STREET • LONG BEACH, CALIFORNIA 90813 • (213) 436-0022 436-6880

Balloon Race

- 1-A The superstructure supporting the center section of this ride should be visually inspected once a year and magnetic particle inspected at the welded and pinned areas every year after three years of operation. The inboard ends of the sweep arms and the clevis area at the base of the center mast should be magnetic particle inspected every year after the second year of operation.
- 2-B The clevis are at the top of the center mast, the pins, eyes and threaded portion of the sweep support rod should be magnetic particle inspected once every year.
- 3-C The outboard end of the sweep support rod, it's eye, pin and clevis area should be magnetic particle inspected once every year.
- 4-D The ends of the sweep arms where the chains and cables attach should be visually inspected for wear and cracks once a year and magnetic particle inspected once every two years.

