



NUMBER: B400R1026-0

DATE: October 14, 1988

SUPERSEDES:

SERVICE BULLETIN

Effective Serial Number: 400-001-88 through 400-003-88

Ride: GIANT GONDOLA WHEEL

Subject: Rim Iron Pins And Bushings

It has come to the attention of CHANCE RIDES, INC. that, during operation of the GIANT WHEEL, the rim iron pins can rotate, causing the hairpins to come out. As a result, one or more rim iron pin could come out, possibly releasing the rim iron from the spreader bar. A rework kit has been designed to securely attach the rim irons by providing a keeper pin which prevents the rim iron pin from coming out.

ALL OWNERS OF GIANT GONDOLA WHEEL AMUSEMENT RIDES WITH THE ABOVE NOTED SERIAL NUMBERS PERFORM THE REWORK DESCRIBED IN THIS BULLETIN.

Perform the rework using the installation instructions on the following pages of this bulletin and the parts provided. Return the attached Certification Of Compliance for the rework within fifteen (15) days from receipt of this bulletin.

All work must be performed by competent, qualified mechanics, capable of understanding the function of the parts and their proper installation. If there are any questions regarding the instructions or this rework, contact the CHANCE CUSTOMER SERVICE DEPARTMENT,

RIDE SERIAL NUMBERS 400-001-88 & 400-002-88

The following parts are included in Kit No. K400R1026-1:

Item No.	Part Number	Description	Qty. Reqd.
1		BUSHING - Rim Iron (400-254-002)	160
2	290-5238300	LYNCH PIN - 1/4"	160

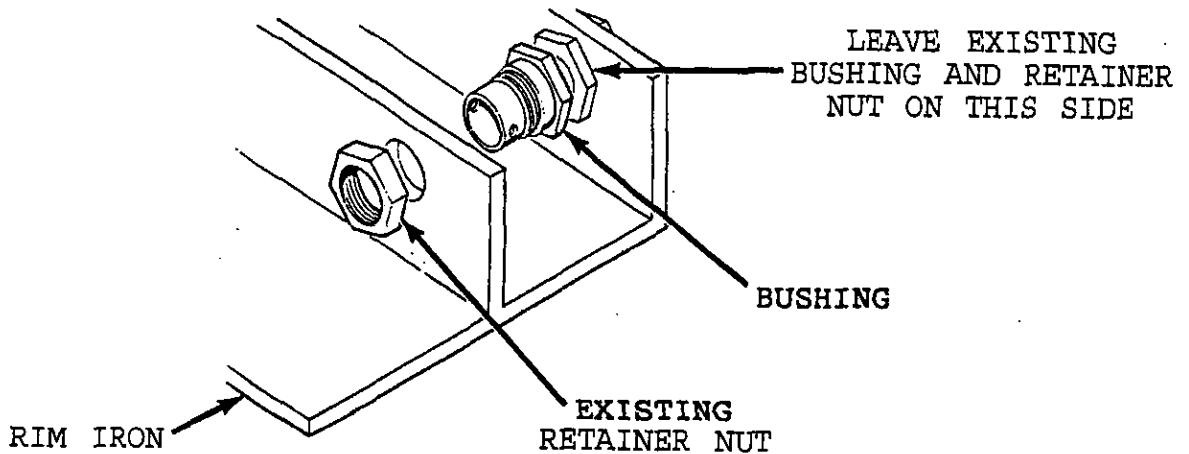
RIDE SERIAL NUMBER 400-003-88

The following parts are included in Kit No. K400R1026-2:

Item No.	Part Number	Description	Qty. Reqd.
1		BUSHING - Rim Iron (400-241-002)	160
2	290-5238300	LYNCH PIN - 1/4"	160

INSTALLATION INSTRUCTIONS

- Remove a rim iron from the ride.
- Remove the bushings on the drive tire side of the rim iron. Discard the bushings, but save the retainer nuts.
- Install the new bushings and secure them with the retainer nuts.



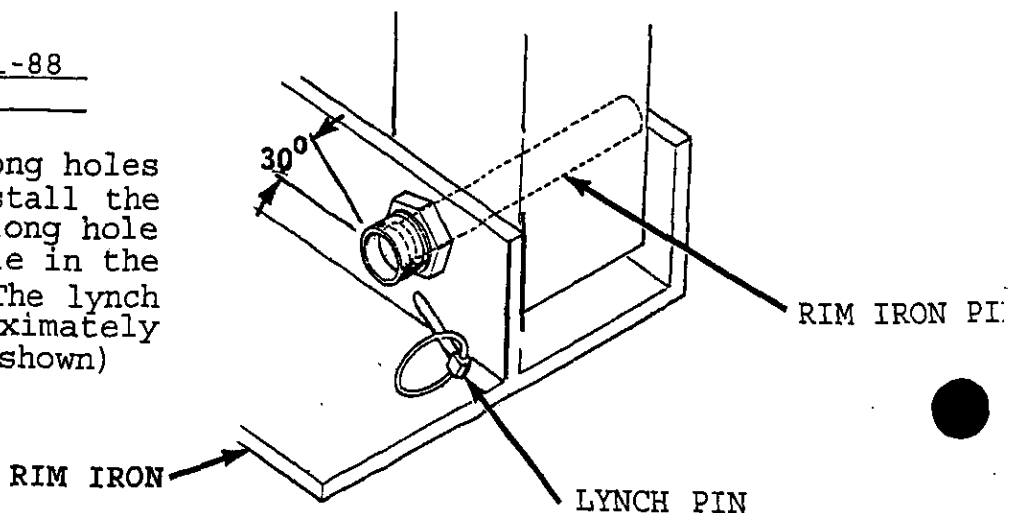
- Install the rim iron using the existing pins and the lynch pins (Item # 2) as shown

IMPORTANT: Install the rim iron pin from the drive tire side, with the lynch pin installed behind the head of the rim iron pin.

- Repeat the procedure on all remaining rim irons.

SERIAL NUMBERS 400-001-88
and 400-002-88

All bushings have oblong holes for rim iron pins. Install the new bushings so the oblong hole is aligned with the hole in the existing bushing. (The lynch pin hole will be approximately 30° off horizontal, as shown)





NUMBER: B400R1031-0

DATE: Nov. 17, 1988

SUPERSEDES:

SERVICE BULLETIN

Effective Serial Number: All Units

Ride: GIANT GONDOLA WHEEL

Subject: Inspection Of Fasteners For
T-Bar Bearing Blocks

It has been determined by CHANCE RIDES, INC. that the fasteners between the T-bar bearing blocks and the sweeps on the GIANT GONDOLA WHEEL must be checked for tightness on a regular basis. If the fasteners become loose, the T-bar can come loose, resulting in possible injury to passengers.

The owners of the above noted GIANT GONDOLA WHEEL amusement rides are therefore required to inspect their rides as described in this bulletin. Perform the inspection using the instructions on the reverse side of this bulletin.

The inspection must be performed by qualified personnel, capable of understanding the function of the parts and their proper installation, If there are any questions regarding the instructions or this inspection, contact the CHANCE CUSTOMER SERVICE DEPARTMENT.

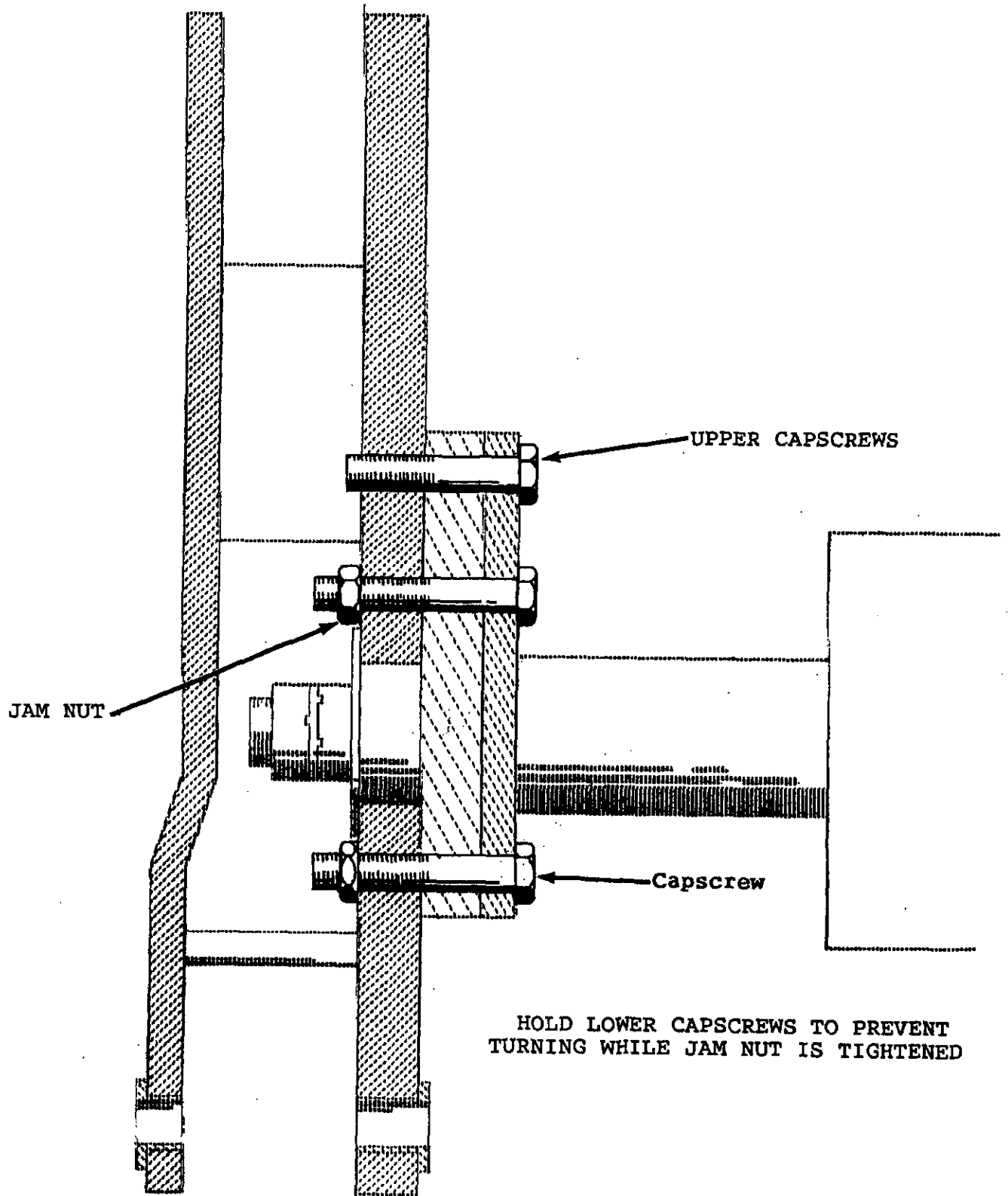
INSPECTION PROCEDURE

Use a torque wrench to check the tightness of ALL fasteners exactly as described in the following procedure.

1. Check for 50-60 ft-lb torque on the four lower capscrews.
2. While holding the capscrews with a wrench to prevent turning, check for 43-51 ft-lb torque on the jam nuts inside the sweep ears.

IMPORTANT: THE CAPSCREW MUST NOT TURN WHEN TIGHTENING THE JAM NUT.

3. Check for 50-60 ft-lb torque on the two upper capscrews.
4. Repeat Steps #1 and #2 on the remaining 39 bearing blocks.
5. Perform this inspection monthly, or at every other set-up.





NUMBER: B400R1030-0

DATE: Nov. 30, 1988

SUPERSEDES:

SERVICE BULLETIN

Effective Serial Number: 400-001-88 and 400-002-88

Ride: GIANT GONDOLA WHEEL

Subject: Retainer Clips For Rim Iron
Light Bar Jumper Cables

It has come to the attention of CHANCE RIDES, INC. that, during operation of the GIANT WHEEL, the jumper cables between the rim iron light bars can come in contact with the T-bars and gondola canopies, causing abrasion of the insulation on the cables.. If the wear is severe enough, an electrical shock hazard can result. A retainer clip has been developed to securely hold the jumper cables away from moving parts.

THE OWNERS OF GIANT GONDOLA WHEEL AMUSEMENT RIDES WITH THE ABOVE NOTED SERIAL NUMBERS ARE REQUIRED TO PERFORM THE REWORK DESCRIBED IN THIS BULLETIN.

Perform the rework using the installation instructions on the reverse side of this bulletin and the parts provided. Return the attached Certification Of Compliance for the rework within fifteen (15) days from receipt of this bulletin.

All work must be performed by competent, qualified mechanics, capable of understanding the function of the parts and their proper installation. If there are any questions regarding the instructions or this rework, contact the CHANCE CUSTOMER SERVICE DEPARTMENT.

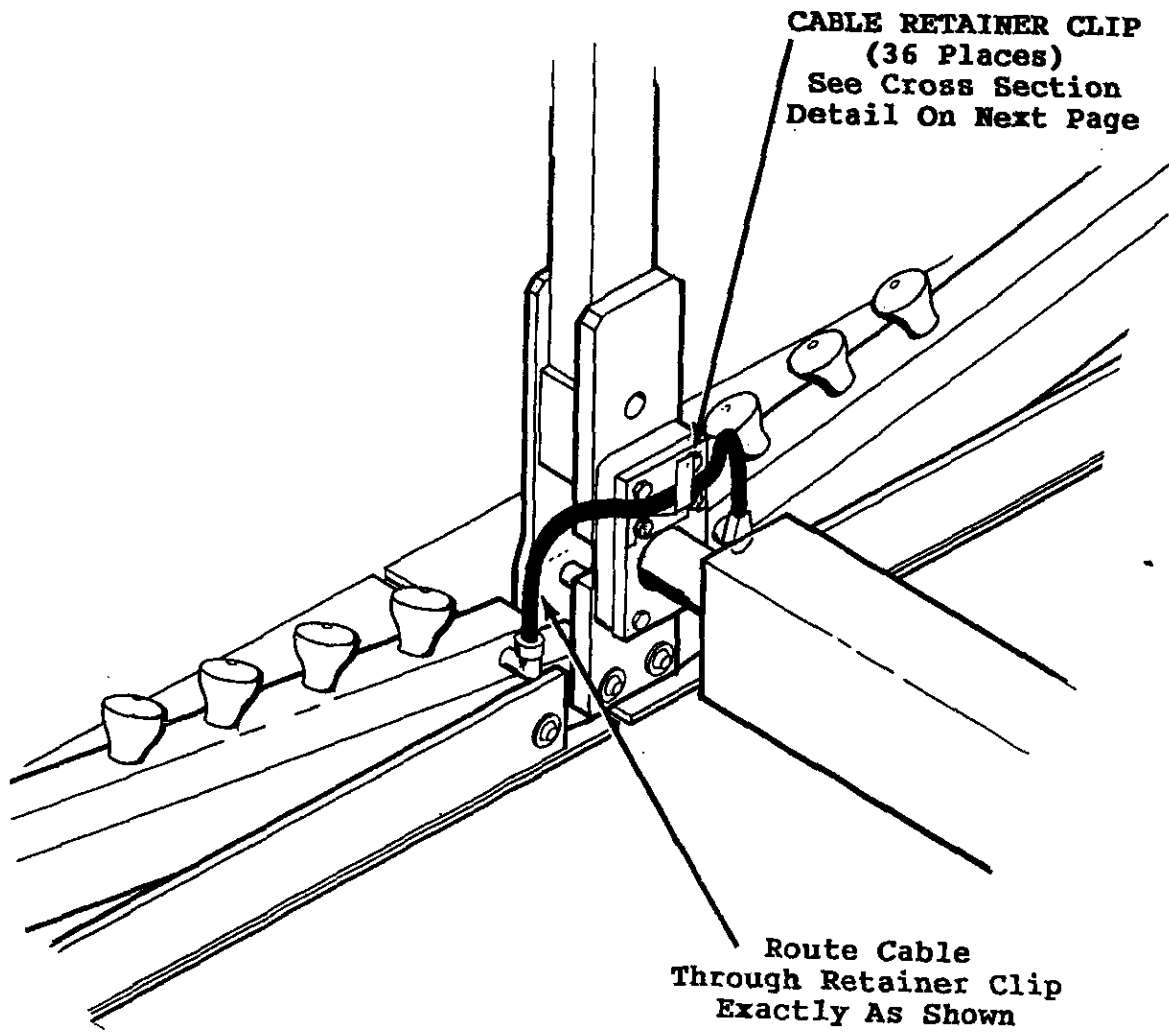
The following parts are included in Kit No. K400R1026-1:

JUMPER CABLE RETAINER CLIP KIT

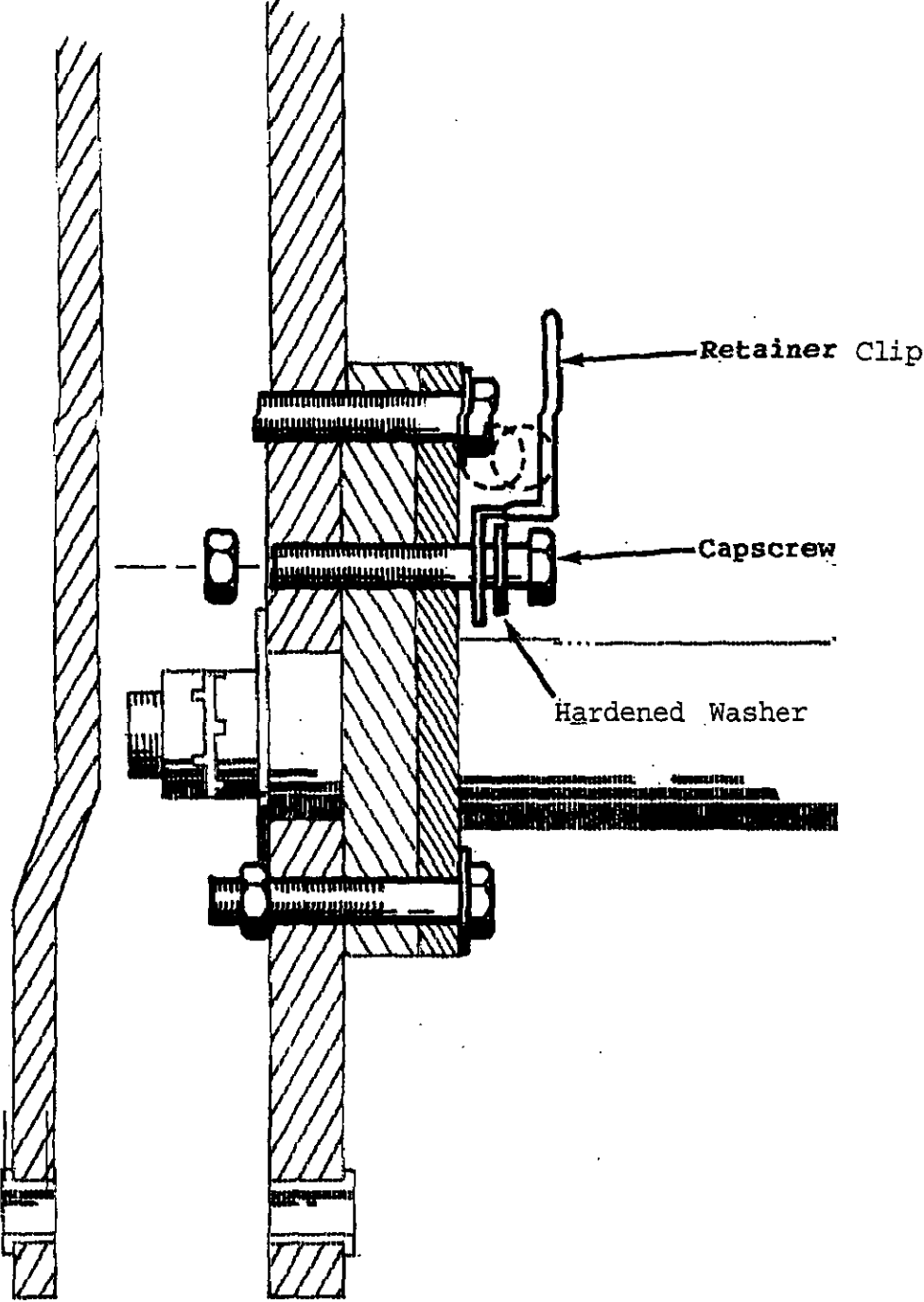
<u>Item</u> <u>No</u>	<u>Part Number</u>	<u>Description</u>	<u>Qty.</u> <u>Read.</u>
1	377-1675300	CLIP - Cable Retainer (4001429-001)	... 36

INSTALLATION INSTRUCTIONS

NOTE: DO NOT INSTALL CABLE RETAINER CLIPS FOR CABLES WHICH CONNECT TO RECEPTACLES ON THE SWEEPS.



Loosen Existing Capscrews To
Install Cable Retainer Clip
Under Existing Hardened Washers.
Tighten Capscrews To 50-60 ft-lbs.





NUMBER: B400R1035-0

DATE: March 22, 1989

SUPERSEDES:

SERVICE BULLETIN

Effective Serial Number: 400-001-88 through 400-004-88 and 400-006-89

Ride: **GIANT GONDOLA WHEEL**

Subject: Hydraulic Cylinder Rework For
Adjustable Long Spreader Bars

It has come to the attention of CHANCE RIDES, INC. that the hydraulic cylinders in the adjustable long spreader bars can develop leaks around the barrel. A new barrel and related cylinder parts have been designed to eliminate this leakage.

ALL OWNERS OF **GIANT GONDOLA WHEEL** AMUSEMENT RIDES WITH THE ABOVE NOTED SERIAL NUMBERS ARE REQUIRED TO PERFORM THE REWORK DESCRIBED IN THIS BULLETIN.

Perform the rework using the installation instructions on the following pages of this bulletin and the parts provided. Return the attached Certification Of Compliance for the rework within fifteen (15) days from receipt of this bulletin.

NOTE: Ride serial number 400-001-88 is provided with kit number K400R1035-1. The other rides noted above are provided with kit number K400R1035-2.

All work must be performed by competent, qualified mechanics, capable of understanding the function of the parts and their proper installation. If there are any questions regarding the instructions or this rework, contact the CHANCE CUSTOMER SERVICE DEPARTMENT.

The following parts are included in Kit No. K400R1035-1:
 (Ride Serial Number 400-001-88 Only)

Item No	Part Number	Description	Qty. Reqd.
--	377-0415800	HYDRAULIC SPREADER BAR (400-244-001) 2

The following parts are included in Kit No. K400R1035-2:
 (Ride Serial Numbers 400-002-88 through 400-004-88 and 400-006-89)

Item No.	Part Number	Description	Qty. Reqd.
1	377-2159800	BARREL - Spreader Cylinder (400-232-001)	-- 2
2	377-5286900	RING - Piston	-- 2
3	290-6114500	O-RING	-- 4
4	290-8556900	WASHER - Back-Up	-- 4

INSTALLATION INSTRUCTIONS

IMPORTANT: The following procedure requires that the ride be disassembled to the point that the adjustable long spreader bars are removed. Use the reverse of the "Set-Up Procedure" in the CHANCE Operation Manual.

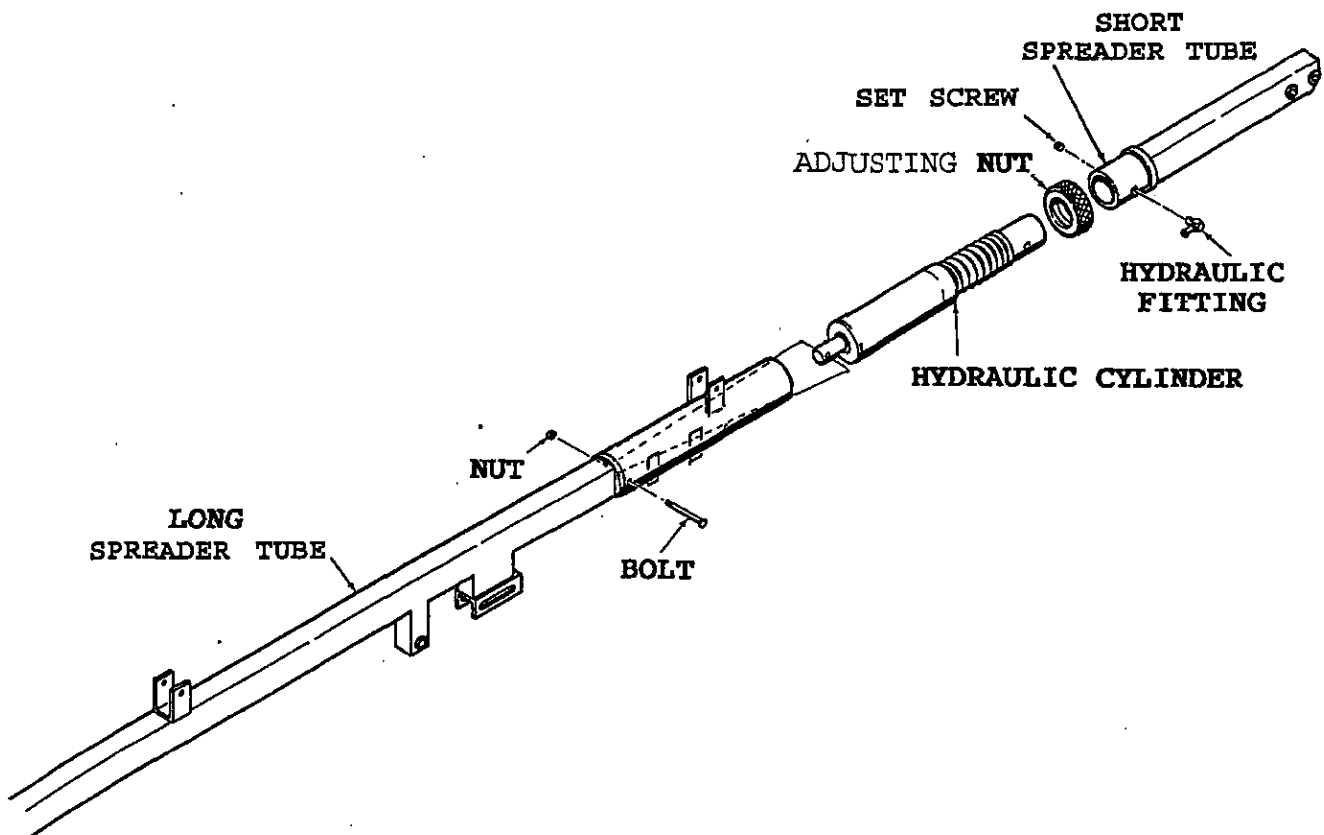
NOTE: On ride serial number 400-001-88, perform only Steps #1 and #9, replacing the entire adjustable spreader bar.

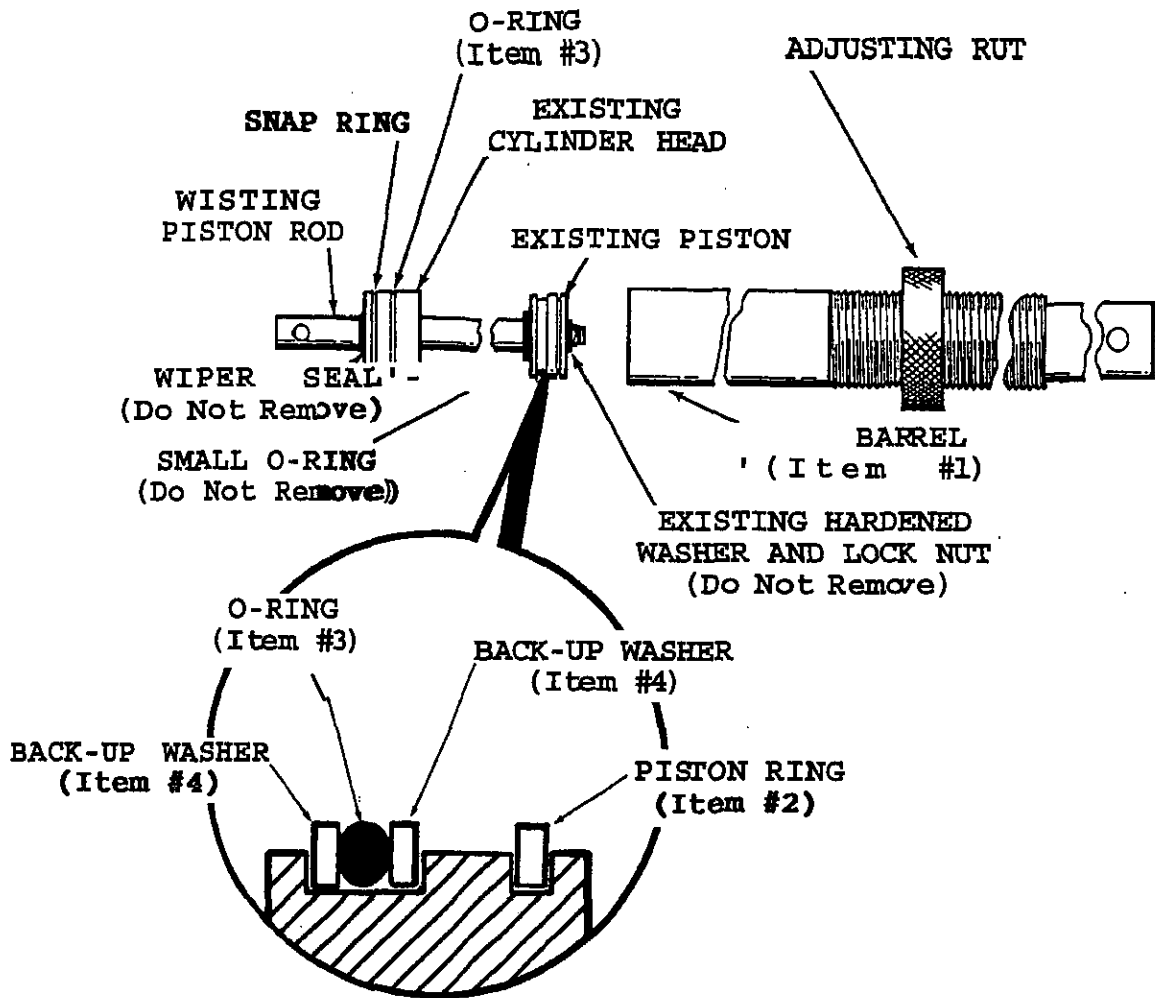
1. With the adjustable spreader bars removed from the ride, remove the bolt and nut from the rod end of the cylinder. Remove the hydraulic fitting and loosen the set screw from the other end.

2. Remove the hydraulic cylinder from the spreader bar.

NOTE: Remove the adjusting nut from the old cylinder barrel and keep it to install on the new barrel.

3. Remove the snap ring and disassemble the cylinder. Leave the cylinder head (gland), piston rod and piston assembled. Save these parts and the snap ring. Discard the old barrel and seals, except for the small O-ring and the wiper seal.





4. Install one O-ring (Item #3) on the existing cylinder head.

IMPORTANT: Lubricate all parts, including the seals, with petroleum jelly. Be careful not to damage the seals or scratch any parts when assembling them.

5. Assemble one O-ring (Item #3), two back-up washers (Item #4), and the piston ring (Item #2) on the piston.
6. Install the piston rod assembly into the barrel. Secure the cylinder head into the barrel with the existing snap ring.
7. Install the reworked cylinder into the spreader tubes. Install the bolt and nut to secure the rod end of the cylinder to the long spreader tube.
8. Align the port with the hole on the short spreader tube and install the hydraulic fitting. Tighten the set screw.
9. Install the spreader bar assembly using the "Set-Up Procedure" in the Operation Manual.



NUMBER: B400R1038-0

DATE: May 25, 1989

SUPERSEDES:

SERVICE BULLETIN

Effective Serial Number: All Units

Ride: GIANT GONDOLA WHEEL

Subject: Hydraulic Leveling Cylinder
Plumbing Rework

Each trailer for the portable model GIANT GONDOLA WHEEL has four hydraulic leveling cylinders. If there is any leakage in the hydraulic system, the rod can lower, due to gravity and the weight of the rod. If this happens during transport of the ride, contact of the piston rod with the pavement can cause serious damage.

CHANCE RIDES, INC. has developed a plumbing rework kit to positively block the flow of hydraulic oil to and from the cylinders.

ALL OWNERS OF GIANT GONDOLA WHEEL AMUSEMENT RIDES ARE REQUIRED TO PERFORM THIS REWORK.

Install the kit using the instructions on the following pages of this bulletin and the parts provided. Return the attached Certification Of Compliance for the rework within fifteen (15) days from receipt of this bulletin.

All work must be performed by competent, qualified mechanics, capable of understanding the function of the parts and their proper installation. If there are any questions regarding the instructions or this rework, contact the CHANCE CUSTOMER SERVICE DEPARTMENT.

PARTS LIST

The following parts are included in Kit No. K400R108-0:

Item No	Part Number	Description	Qty. Reqd.
1.	290-8441000	VALVE - Shut-Off	12
2.	685-0018600	FITTING - Adapter	12

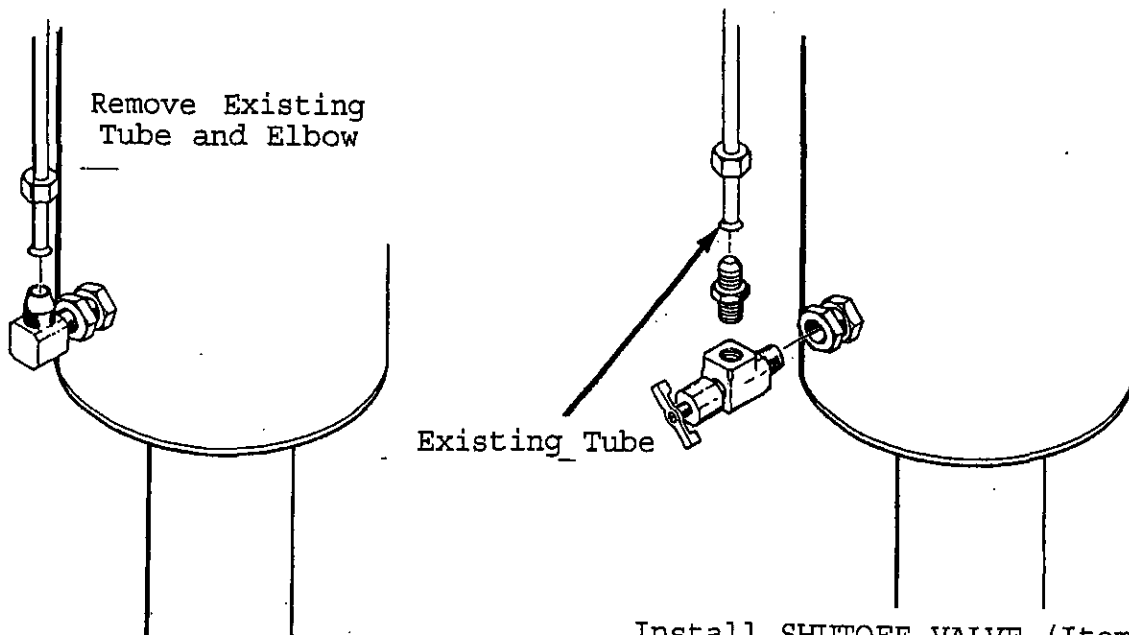
INSTALLATION INSTRUCTIONS

1. Extend the hydraulic leveling cylinders until they almost touch the base plate. All pressure must be relieved from the hydraulic system, and no weight should be on the cylinders. Remove the tube and elbow from the lower port (rod end) of the cylinder.

WARNING: THE HYDRAULIC CYLINDERS MUST BE EXTENDED, WITH NO WEIGHT ON THE CYLINDERS AND ALL PRESSURE RELIEVED FROM THE HYDRAULIC SYSTEM.

IF ANY PLUMBING IS LOOSENED WITH THE WEIGHT OF THE RIDE ON THE HYDRAULIC CYLINDERS, THE RIDE CAN TIP, CAUSING SERIOUS PERSONAL INJURY.

2. Install the shut-off valve (Item #1) and adapter (Item #2) into the cylinder port. Reinstall the tube.
3. Repeat the procedure on the other eleven (11) leveling cylinders.
4. Check and fill the hydraulic reservoir to replace lost oil.
5. When transporting the ride, all shut-offs must be in the CLOSED position (tightened clockwise). Always open the valves after the ride is in position and ready for set-up.



Install SHUTOFF VALVE (Item #1)
and ADAPTER (Item #2) in lower port
of hydraulic leveling cylinder



NUMBER: B400R1045-0

DATE: June 22, 1989

SUPERSEDES:

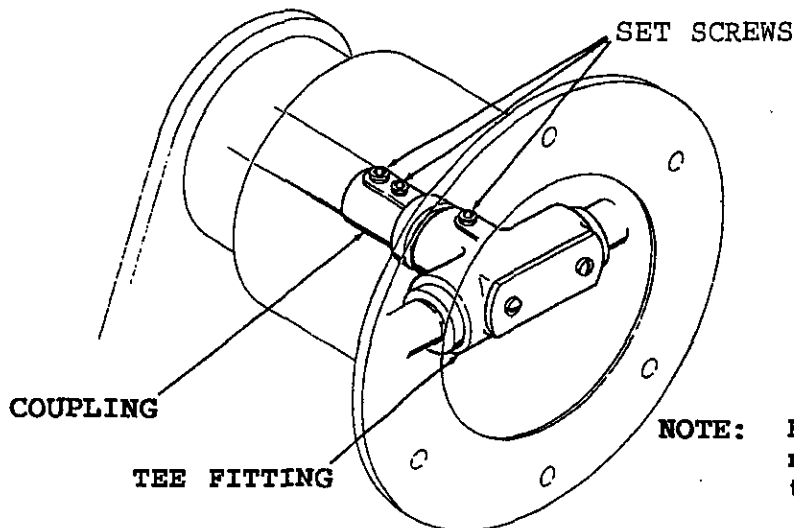
SERVICE BULLETIN

Effective Serial Number: 400-001-88 through 400-005-88

Ride: GIANT GONDOLA WHEEL

Subject: Axle Conduit Coupling Check

The axle hubs on the GIANT GONDOLA WHEEL are fitted with conduit to route electrical wiring to the collector rings. A metal coupling connects the collector ring axle to a tee fitting on each axle hub as shown below.



NOTE: Remove plexiglass covers as necessary to gain access to the coupling and tee.

The set screws which secure the coupling and/or tee can become loose after extended operation, causing damage to the wiring. To prevent this, check the set screws at each set up to be sure they are tight. DO NOT OVER-TIGHTEN.

If a loose set screw is found, inspect the wiring for indications of twisting or damage. Make sure the set screws in the coupling are fully engaged in the keyway in the collector ring axle.

All work must be performed by qualified personnel, capable of understanding the function of the parts and their proper installation. If there are any questions regarding the instructions or this inspection, contact the CHANCE CUSTOMER SERVICE DEPARTMENT.



NUMBER: B400R1046-A

DATE: July 17, 1989

SUPERSEDES: B400R1046-0

SERVICE BULLETIN

Effective Serial Number: All Units

Ride: GIANT GONDOLA WHEEL

Subject: Gondola Door Adjustment

This bulletin supersedes Service Bulletin No. B400R1046-0. It is no longer in effect and should be destroyed.

The gondola doors on the GIANT GONDOLA WHEEL will not operate properly if they are not correctly adjusted. Inspect both sets of doors on each gondola in the closed position. If the doors are not within the tolerances given below, perform the adjustment procedure that follows to properly locate the doors. The doors must be inspected weekly or at every set-up, whichever occurs first.

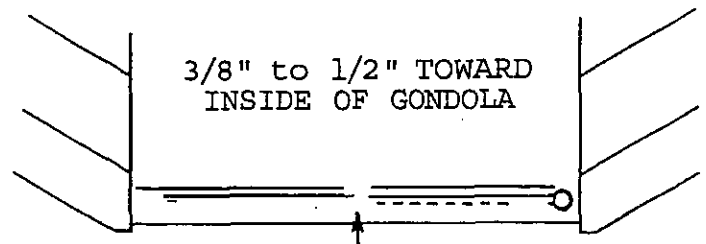
All work must be performed by competent, qualified personnel, capable of understanding the function of the parts and their proper installation. If there are any questions regarding the instructions or this inspection, contact the CHANCE CUSTOMER SERVICE DEPARTMENT.

Inspection

RIDE SERIAL NUMBERS 400-001-88 THROUGH 400-012-89

With the doors closed, and the cam pin against the stop bolt, check the alignment of the door panels. The doors must be angled slightly toward the center of the gondola as shown, not flush with each other.

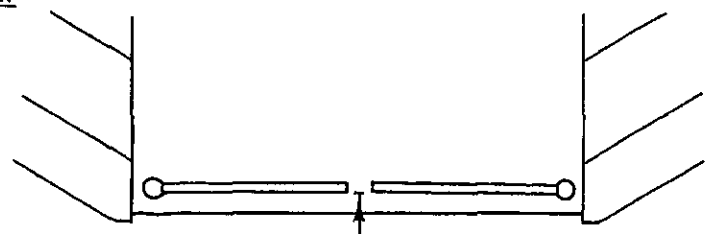
If adjustment of the doors is required, follow the procedure on the reverse side of this bulletin.



RIDE SERIAL NUMBERS 400-013-89 AND ON

With the doors closed, and the cam pin against the stop bolt, check the alignment of the door panels. The doors must be flush with each other.

If adjustment of the doors is required, follow the procedure on the reverse side of this bulletin.

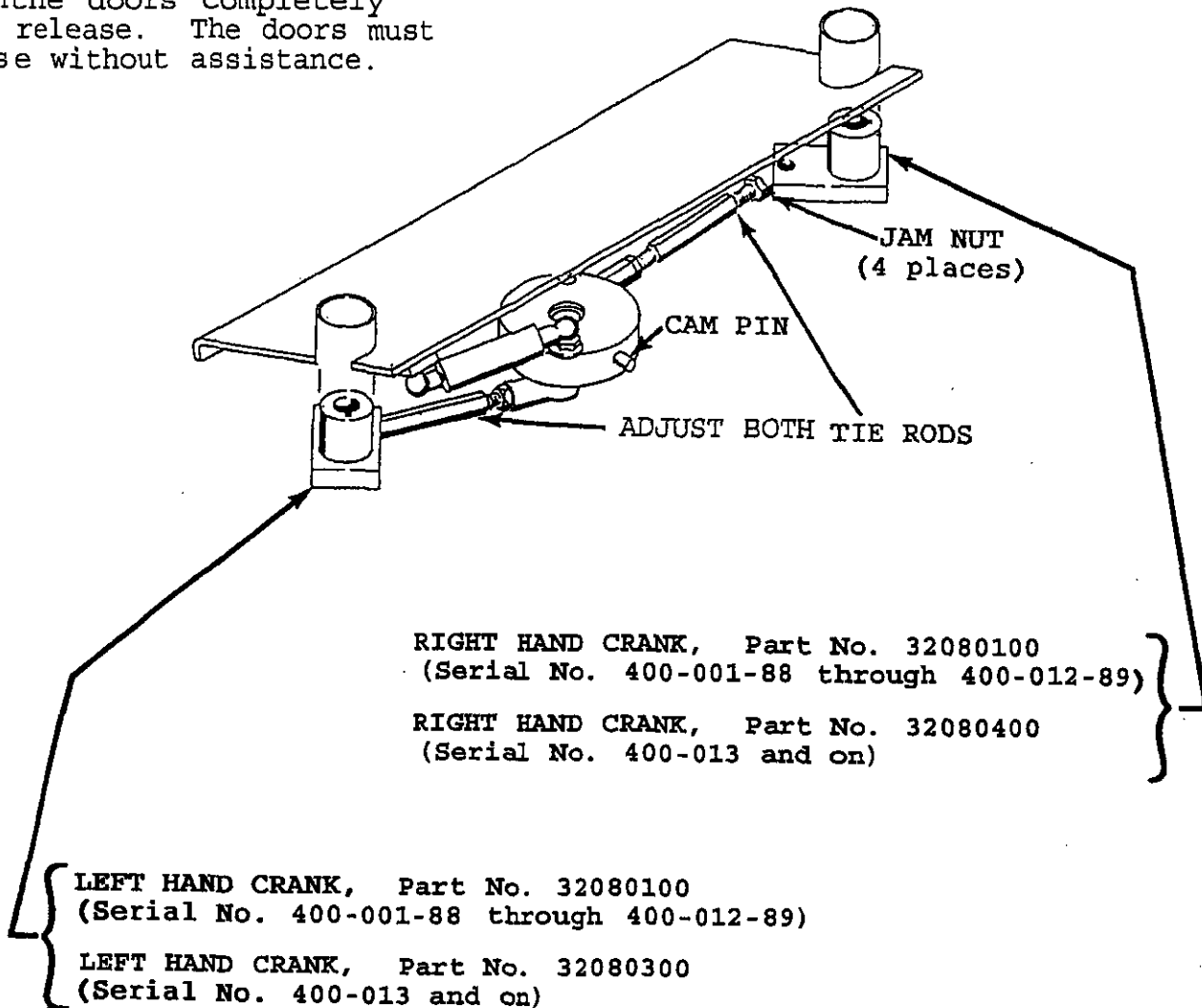


DOORS FLUSH WITH EACH OTHER

Adjustment

If adjustment of the doors is required, remove the access panel and adjust the length of the tie rods. Loosen jam nuts and turn the rod to shorten or lengthen both tie rods as required. Tighten jam nuts and replace the access panel.

Open the doors completely and release. The doors must close without assistance.





NUMBER: B400R1043-0

DATE: July 17, 1989

SUPERSEDES:

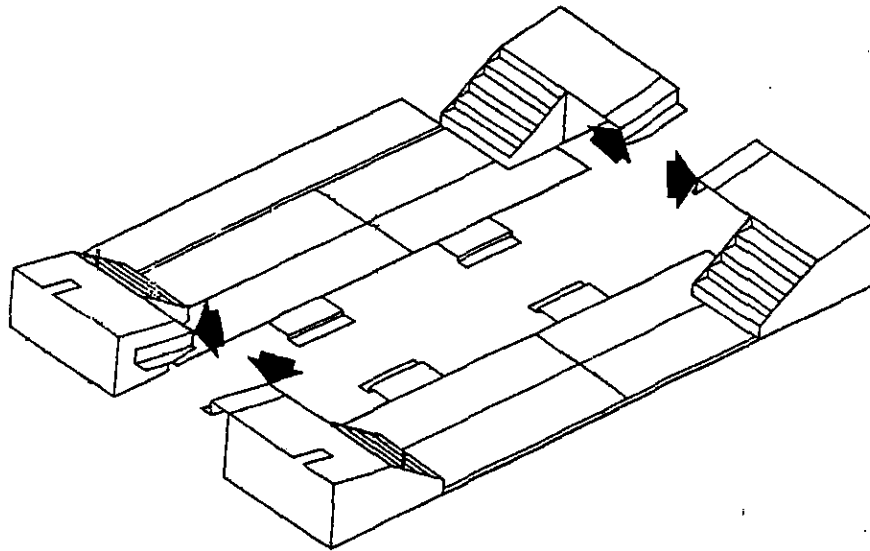
SERVICE BULLETIN

Effective Serial Number: All Units

Ride: GIANT GONDOLA WHEEL
(Portable Model Only)

Subject: Floor Rework

The GIANT GONDOLA WHEEL is equipped with floor extensions in the passenger loading areas. When wind conditions cause the gondolas to swing, they can contact the floor sections shown below.



A rework has been designed to provide additional clearance between the gondolas and these floor sections. CHANCE RIDES, INC. REQUIRES ALL OWNERS OF PORTABLE MODEL GIANT GONDOLA WHEEL AMUSEMENT RIDES TO PERFORM THIS REWORK.

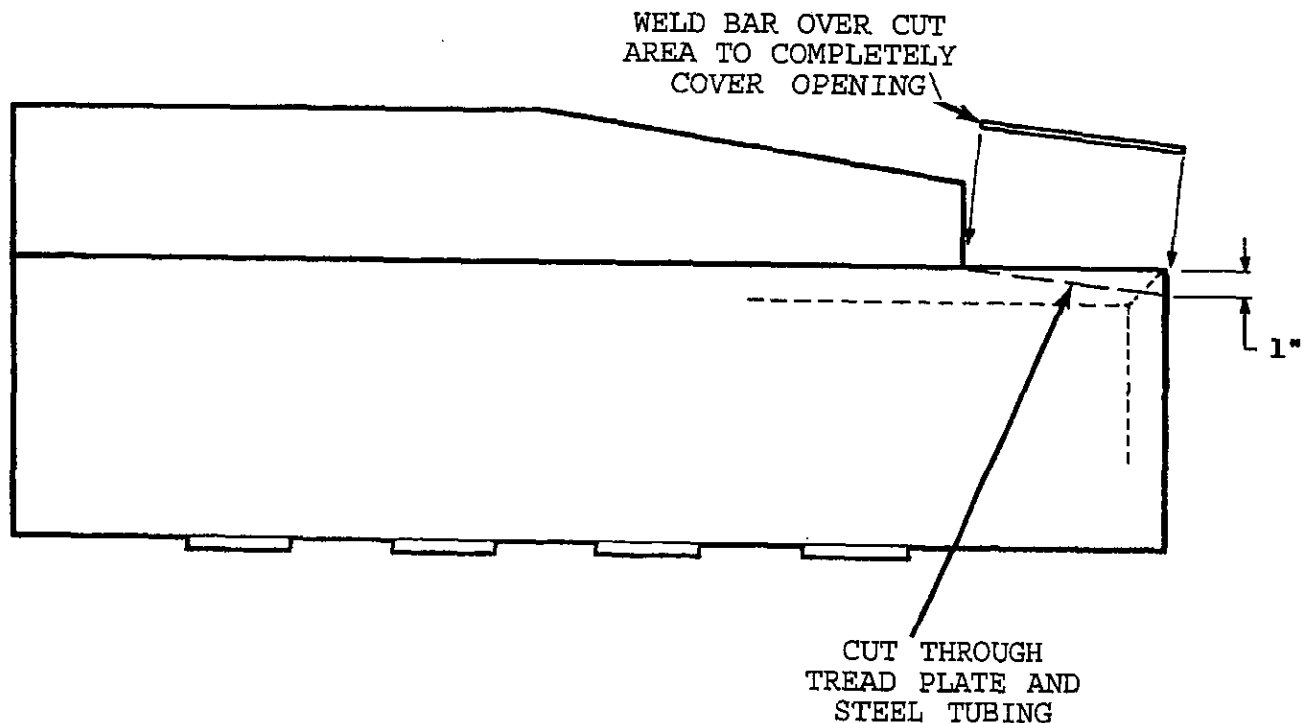
Use the procedure on the reverse side of this bulletin for the rework. Return the attached Certification Of Compliance within fifteen (15) days from receipt of this bulletin.

All work must be performed by qualified personnel, capable of understanding the function of the parts and their proper installation. If there are any questions regarding the instructions or this rework, contact the CHANCE CUSTOMER SERVICE DEPARTMENT.

REWORK INSTRUCTIONS

All work must be performed by competent, qualified mechanics, capable of understanding the function of the parts and their proper installation. If there are any questions regarding the instructions or this rework, contact the CHANCE CUSTOMER SERVICE DEPARTMENT.

1. Remove the four floor sections shown on the previous page.
2. Mark the floor and cut as shown. Cut through the aluminum tread plate and the steel tubing.
3. Remove enough rivets to separate the aluminum tread plate from the steel tubing in the cut area. Weld a $1/8 \times 1-7/8$ bar to cover the cut area completely.
4. Paint the repaired area and rivet the tread plate in place.
5. Repeat the procedure for the other three floor sections.





NUMBER: B400R1047-0

DATE: July 17, 1989

SUPERSEDES:

SERVICE BULLETIN

Effective Serial Number: All Units

Ride: GIANT GONDOLA WHEEL
(Portable Model Only)

Subject: Trailer Leveling Instructions

Running a ride which is not properly leveled can cause stress on mechanical parts, reducing the service life of these parts. Damage can also occur to the gondolas, resulting in personal injury to passengers and/or bystanders.

The trailers for the portable model GIANT GONDOLA WHEEL are equipped with hydraulic cylinders and screw jacks for leveling the ride. Operation of these devices and proper blocking procedures are outlined in the CHANCE OPERATION AND MAINTENANCE MANUAL.

If soft ground conditions permit settling of the ride, or if the ride is improperly blocked or leveled, clearance can be reduced between the gondolas and the floors in the passenger loading areas.

Other evidence that the ride is not level is the position of the drive tires on the rim irons. Drive tires which are rubbing or are out of alignment are an indication that the trailers are not properly leveled.

DO NOT OPERATE A RIDE WHICH IS NOT PROPERLY BLOCKED OR THAT SHOWS EVIDENCE OF IMPROPER LEVELING. Reblocking and releveling the ride, as described in the CHANCE OPERATION AND MAINTENANCE MANUAL, is necessary before operation of the ride can resume.

All work must be performed by qualified personnel, capable of understanding the function of the parts and their proper installation. If there are any questions regarding the instructions or this rework, contact the CHANCE CUSTOMER SERVICE DEPARTMENT.



NUMBER: B400R1054-0

DATE: Jan. 19, 1990

SERVICE BULLETIN

Effective Serial Numbers: All Units

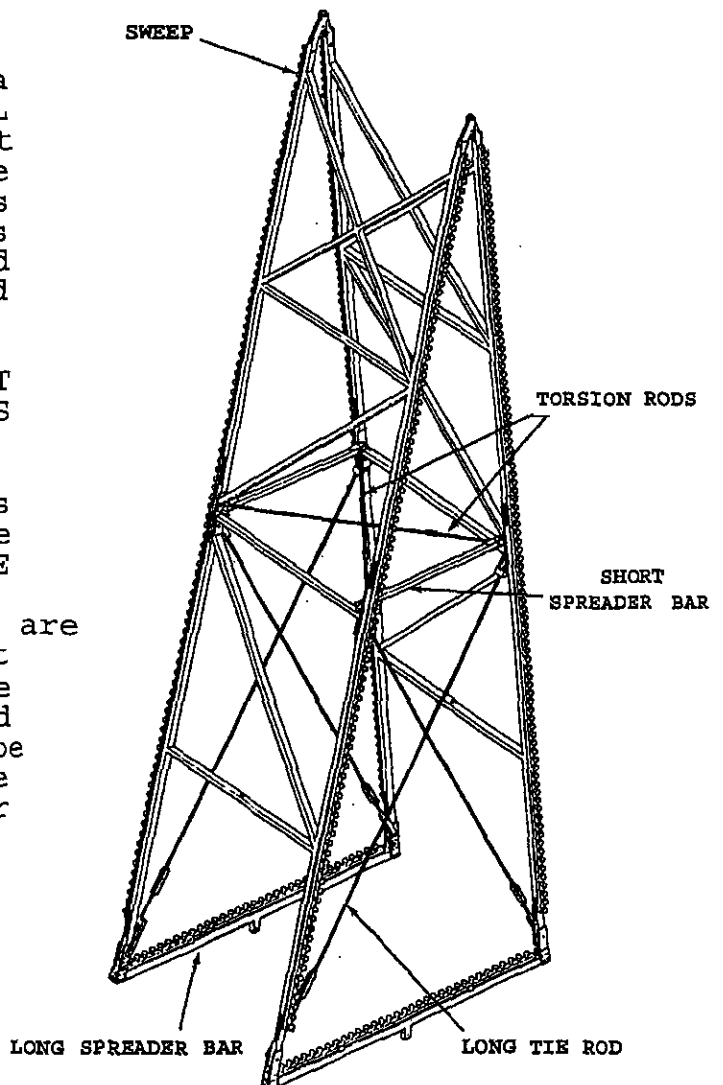
Ride: GIANT GONDOLA WHEEL

Subject: Tie Rod Installation

CHANCE RIDES, INC. has received a report of a GIANT GONDOLA WHEEL ride which was operated without first installing the long tie rods and torsion rods. This could have resulted in serious structural damage to the ride and possible injury to passengers and bystanders.

NEVER OPERATE THE RIDE WITHOUT THE TIE RODS AND TORSION RODS PROPERLY INSTALLED.

Always install these parts exactly as described in the set-up portion of the CHANCE OPERATION & MAINTENANCE MANUAL. The tie rods and torsion rods are necessary to maintain the correct shape and alignment of the wheel. All maintenance and set-up personnel must be instructed as to the importance of these parts and their proper installation.





NUMBER: B400R1055-0

DATE: Feb. 1, 1990

SUPERSEDES:

SERVICE BULLETIN

Effective Serial Numbers: All Units

Ride: GIANT GONDOLA WHEEL

Subject: PLATING ON GONDOLA STEM

It has come to the attention of Chance Rides, Inc. that there were some problems that developed during the plating process of the gondola stems. The result of this plating problem is external rusting and cosmetic only. It does not affect the integrity of the ride.

It does, however, cause a rusting discoloration of the gondola stem.

All GIANT GONDOLA WHEEL ride owners should inspect the stems for this rusting discoloration. If the problem exists, new stems may be ordered. When the original gondola stems have been returned to Chance Rides, Inc. full credit will be issued. Stems must be ordered within one year from the date of this bulletin to receive credit.

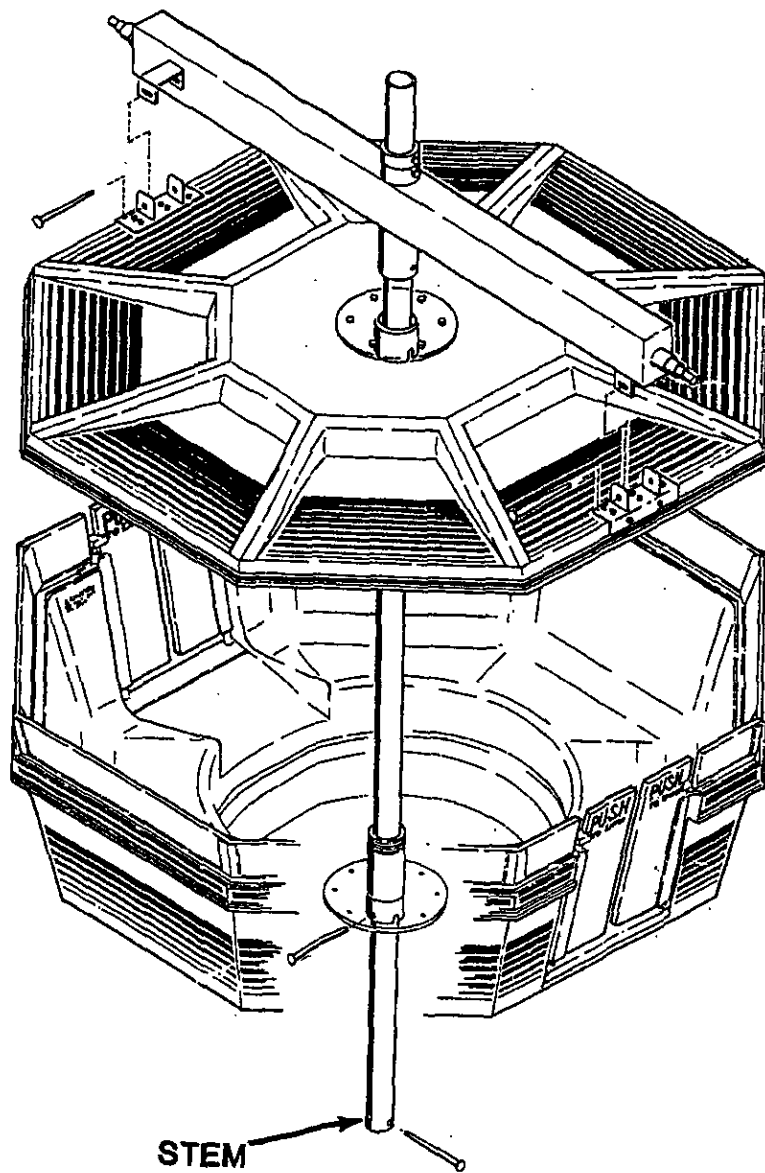
When ordering gondola stems, order part number 377-8262500.

All work must be performed by qualified personnel, capable of understanding the function of the parts and their proper installation.

NOTICE

Use only those components authorized, specified or provided by the manufacturer. If any alterations and/or modifications or additions and installations of unauthorized components are made to the original design without the manufacturer's explicit written consent or without direct supervision by a manufacturer's representative, Chance Rides, Inc. makes no claim as to the integrity of the altered or modified ride.

If there are any questions regarding this inspection contact the Chance Rides Customer Service Department.





B400R1058-0

Feb. 16, 1990

SERVICE BULLETIN

ALL UNITS

GIANT GONDOLA WHEEL

AXLE HUB REWORK

Chance Rides, Inc. has become aware that it is possible, if not properly torqued, for the bolts holding the axle to the hub on the GIANT GONDOLA WHEEL amusement ride to become loose. If these bolts are allowed to become loose they may work themselves out of the hub and could result in injury to passengers. A bolt keeper kit has been developed to securely hold the axle bolts to the proper torque of 800 foot pounds.

The owners of GIANT GONDOLA WHEELS as identified above are required to perform the rework described in this bulletin.

Perform the rework using the installation instructions on the reverse side of this bulletin and the parts contained in Kit No. K-400R1058-0. Each kit contains enough parts to rework one ride. Return the attached Certification of Compliance for the rework within fifteen (15) days from receipt of kit.

All work must be performed by qualified personnel, capable of understanding the function of the parts and their proper installation. If there are any questions regarding the instruction or this rework contact the Chance Customer Service Department.

The following parts are included in Kit No. K400R1058-0. When ordering this kit, specify as to six bolt or ten bolt pattern.

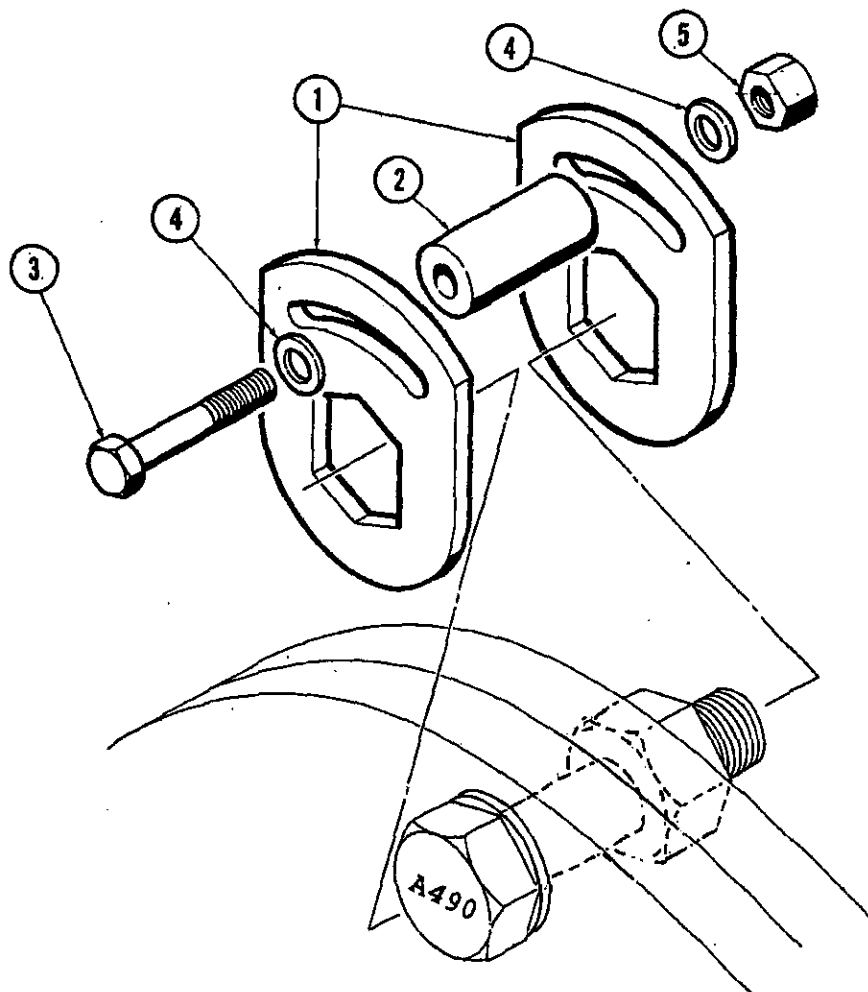
<u>Item No.</u>	<u>Part Number</u>	<u>Description</u>	<u>Qty Reqd. 6 Bolt Pattern</u>	<u>Qty Reqd. 10 Bolt Pattern</u>
1	3-5358543	Keeper	24	40
2	3-6990400	Spacer	12	20
3	6-0844000	Hexhead Capscrew 1/2-13x4-1/4"	12	20
4	6-8553000	Washer 1/2"	24	40
5	6-4805000	Lock Nut 1/2-13	12	20

NOTICE

Use only those components authorized, specified or provided by the manufacturer. If any alterations and/or modifications or additions and installations of unauthorized components are made to the original design without the manufacturer's explicit written consent or without direct supervision by a manufacturer's representative, Chance Rides, Inc. makes no claim as to the integrity of the altered or modified ride.

Installation Instructions

1. Check each axle bolt with a torque wrench for 800 foot pounds.
2. Place one keeper (item 1) over the axle bolt head and one keeper over the nut.
3. Insert the 1/2" Hexhead Capscrew (item 3) through the slot in the keeper, through the spacer (item 2) and through the other keeper.
4. Make sure washers (item 4) are installed as shown in the following illustration.
5. Secure the bolt with 1/2" locknut (item 5). Using a torque wrench, tighten nut to 55 foot pounds.
6. Install the rest of the keepers on both sides of the axle in the same manner.





Number: 400R1062-0

Date: April 26, 1990

SUPERSEDES:

SERVICE BULLETIN

Effective Serial Numbers: 400-001-88 through 400-018-90

Ride: GIANT GONDOLA WHEEL

Subject: PLC LIGHTING CONTROLLER BOX
RECALL AND DECAL PLACEMENT

Chance Rides, Inc. has now improved the design of the PLC light controller box. All owners of GIANT GONDOLA WHEEL amusement rides with the above noted serial numbers are required to remove the PLC lighting controller box and return it to Chance Rides, Inc. for a factory rework.

Remove the PLC lighting controller box from the torque tube by following the instructions on the reverse side of this bulletin and as shown in illustration A. Failure to follow instructions on decals could result in electrical shock or damage to the PLC controller.

Included with the PLC lighting controller box when it is returned after the factory rework will be six CAUTION decals. These decals are to be positioned on the other six electrical boxes located on the torque tube as shown in illustration A.

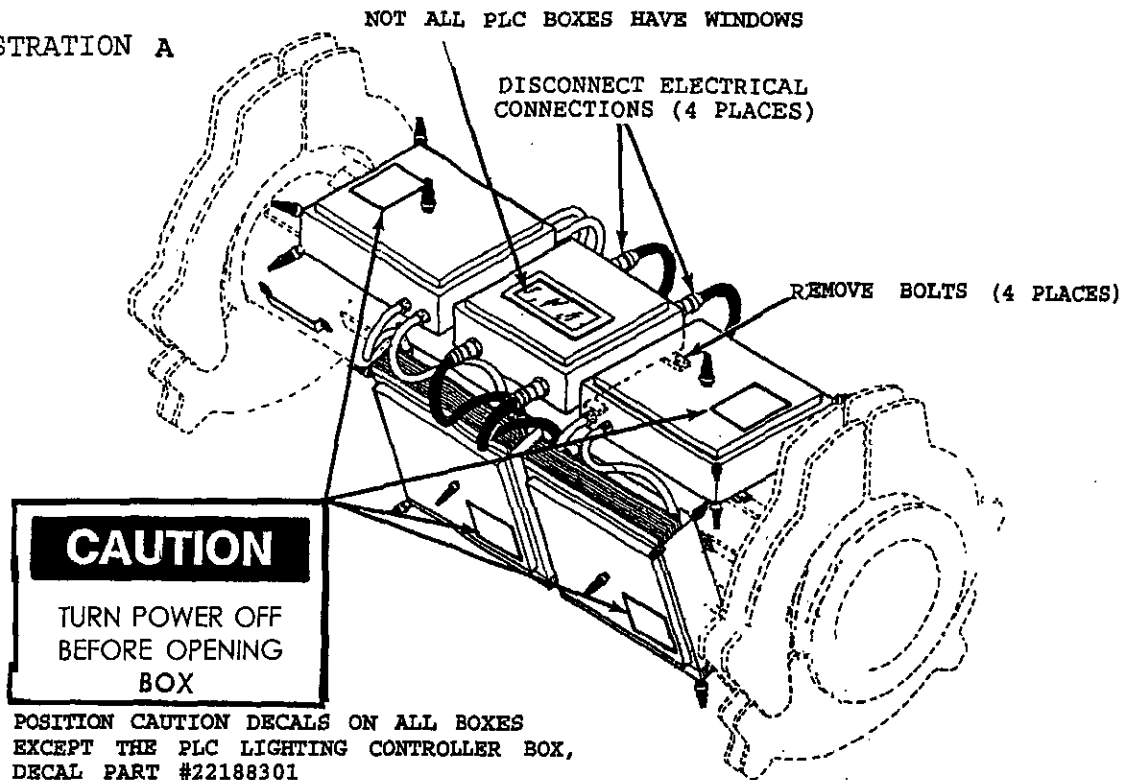
All work must be performed by competent, qualified mechanics, capable of understanding the function of the parts and their proper installation. If there are any questions regarding this information, contact the CHANCE CUSTOMER SERVICE DEPARTMENT.

PLC LIGHTING CONTROLLER BOX REMOVAL PROCEDURE

1. Disconnect the four (4) electrical connectors from the box.
2. Carefully remove the four (4) bolts which hold the box in place on the torque tube.

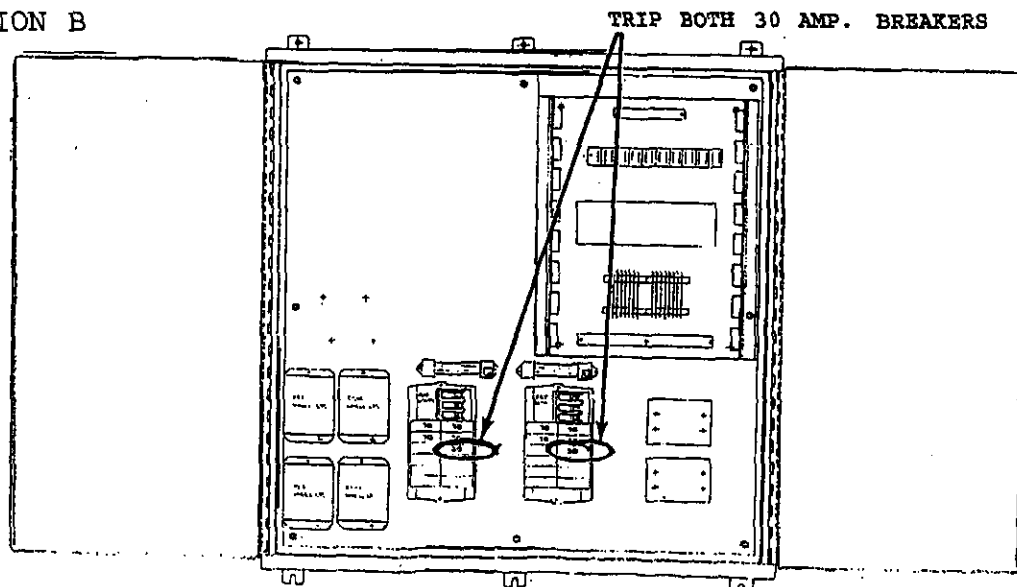
Reverse procedure to install new PLC lighting controller box.

ILLUSTRATION A



The new PLC lighting control box will be factory sealed and must NOT be opened by anyone other than a Chance Rides, Inc. representative. The lights can be turned on steady for purposes of checking light bulbs by turning off the two 30 amp. breakers in the main lighting control box; as shown in illustration B.

ILLUSTRATION B





NUMBER: B400R1036-A

DATE: AUGUST 17, 1990

SUPERSEDES: B400R1036-0

SERVICE BULLETIN

Effective Serial Number: All Units

Ride: GIANT GONDOLA WHEEL

Subject: Inspection of Torque
Tube Fasteners

Service Bulletin Number B400R1036-0 has been superseded by this Service Bulletin and is no longer in effect. All copies of Service Bulletin B400R1036-0 should be destroyed.

The torque tube to tower head joint on the GIANT GONDOLA WHEEL amusement ride was designed with sufficient clamping force being achieved when each of the bolts in the joint is torqued from a 700 minimum to 850 maximum foot pounds. Chance Rides, Inc. requires all owner/operators of GIANT GONDOLA WHEELS to use a torque wrench to verify that the proper torque has been applied to each of these bolts at every set up or once each operating season, whichever occurs first.

A new decal, reflecting this 700 to 850 foot pound range, is now available. When replacing the old decal, the new one should be placed directly over the old one. Refer to the installation instruction on the reverse side of this bulletin.

All work must be performed by qualified personnel, capable of understanding the function of the parts and their proper installation. If there are any questions regarding this bulletin or the instructions contained in it, contact the CHANCE RIDES, INC. CUSTOMER SERVICE DEPARTMENT.

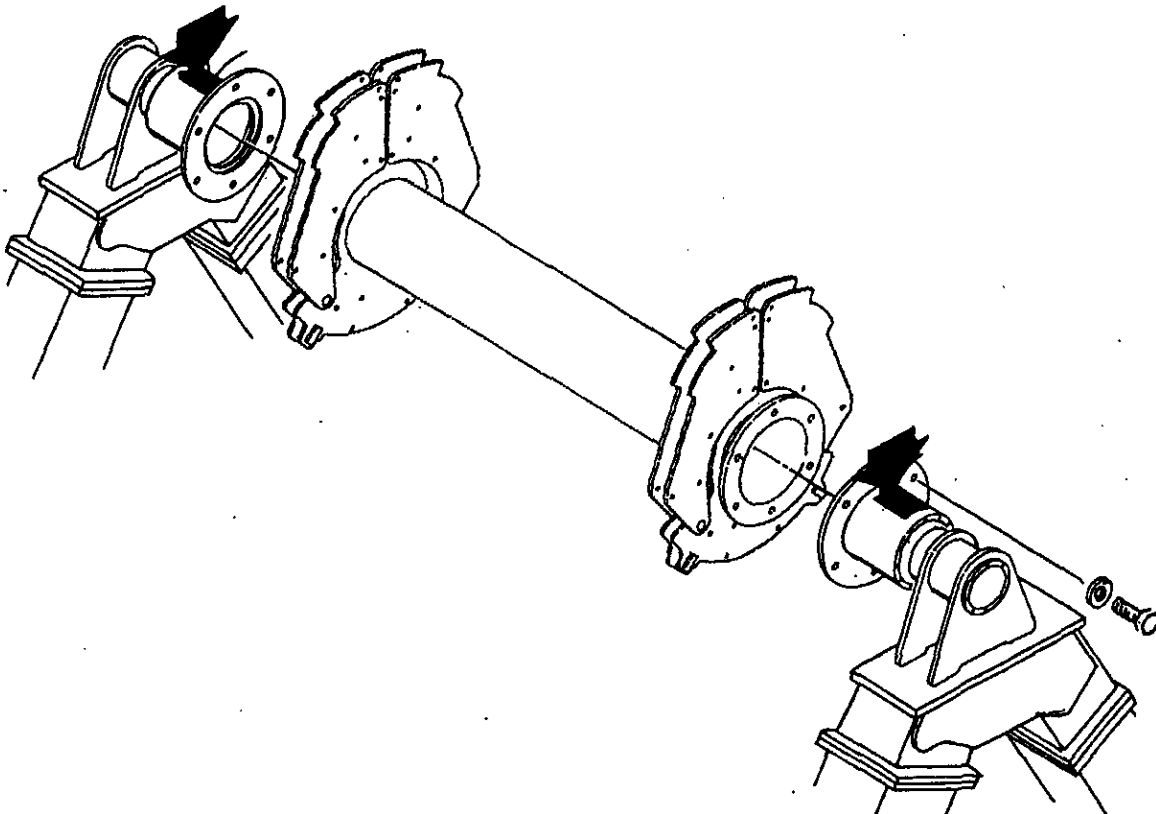
Item No	Part Number	Description	QTY. Reqd.
1.	277-2192901	DECAL - Capscrew Tightening (400-341-001)	... 2
2.	277-2192902	DECAL - Capscrew Inspection (400-342-001)	... 2

INSTALLATION INSTRUCTIONS

1. Install one of decal (Item #1) on each bearing housing as shown, so that it is visible with the tower legs DOWN. Apply the new decal directly over the top of the old decal.

A WARNING A

TIGHTEN THE CAPSCREWS FOR THE TORQUE TUBE TO 700-850 FT-LBS. BEFORE ERECTING THE TOWER LEGS. FAILURE TO DO SO CAN CAUSE STRUCTURAL FAILURE AND RESULT IN SERIOUS INJURY TO PASSENGERS AND/OR BYSTANDERS.

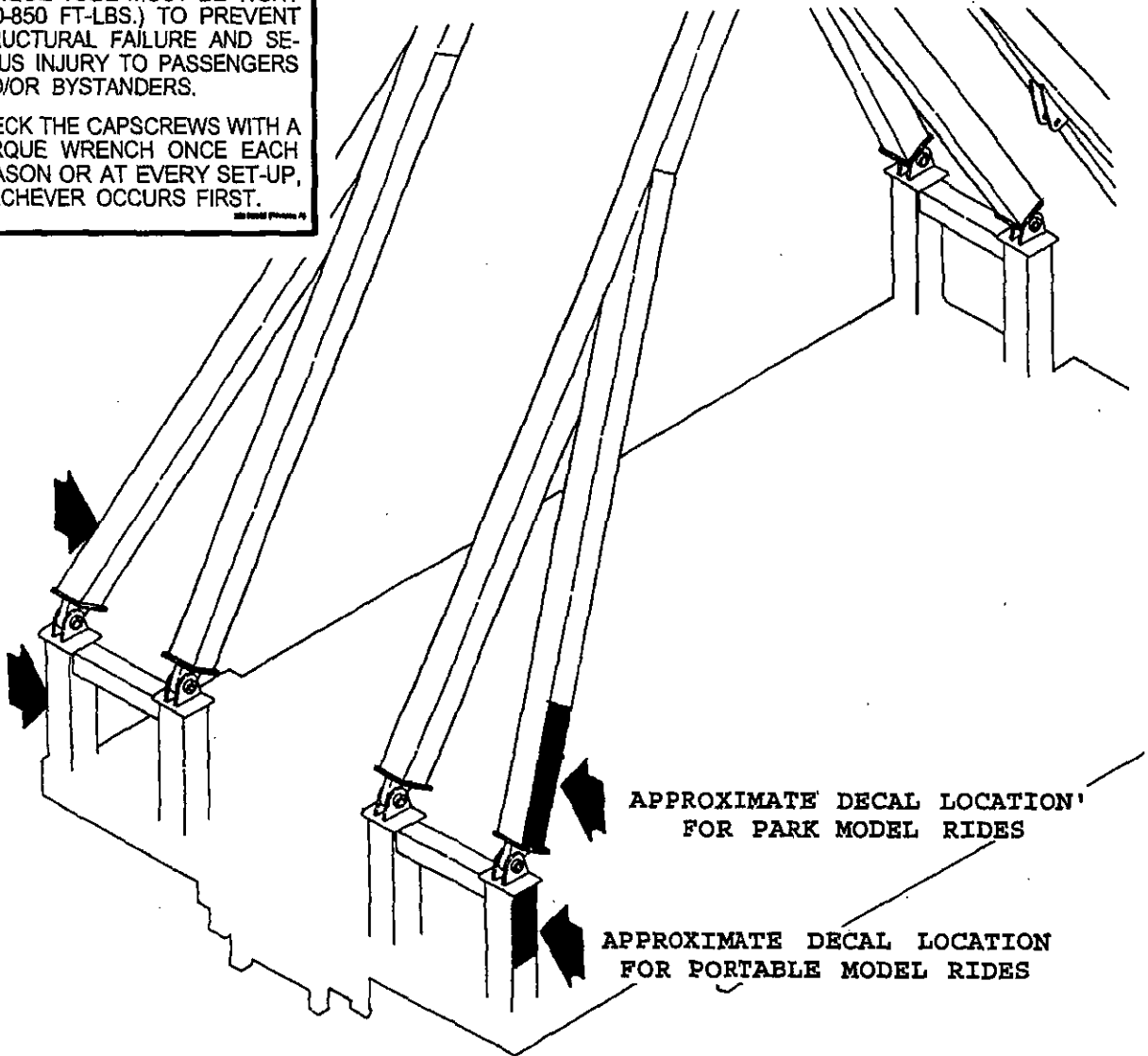


2. Install one decal (Item #2) on each tower leg as shown, so that it is easily visible by maintenance and inspection personnel. Apply the new decal directly over the top of the old decal.

A WARNING A

THE CAPSCREWS FOR THE TORQUE TUBE MUST BE TIGHT (700-850 FT-LBS.) TO PREVENT STRUCTURAL FAILURE AND SERIOUS INJURY TO PASSENGERS AND/OR BYSTANDERS.

CHECK THE CAPSCREWS WITH A TORQUE WRENCH ONCE EACH SEASON OR AT EVERY SET-UP, WHICHEVER OCCURS FIRST.



APPROXIMATE DECAL LOCATION FOR PARK MODEL RIDES

APPROXIMATE DECAL LOCATION FOR PORTABLE MODEL RIDES



NUMBER: B400R1098-0

DATE: MAY 10, 1991

SUPERSEDES:

SERVICE BULLETIN

Effective Serial Number: All Portable Units - Chance Rides, Inc.

Ride: GIANT WHEEL

Subject: Warning Decal/Tape

Chance Rides, Inc. has added decals and tape to the GIANT GONDOLA WHEEL to alert individuals of the possible pinch points between the trailers as they are drawn together during set-up and around the hydraulic lift platform during installation of gondolas. Chance Rides, Inc. requires all owners of portable GIANT GONDOLA WHEEL amusement rides to order and install these warning items as outlined in this bulletin. Failure to comply with this bulletin could result in injury to personnel. All personnel must be made aware of potential pinch points and instructed to stay clear of these areas.

All work must be performed by aqualified personnel, capable of understanding the function of the parts and their proper installation.

NOTICE

Use only those components authorized, specified or provided by Chance Rides, Inc.

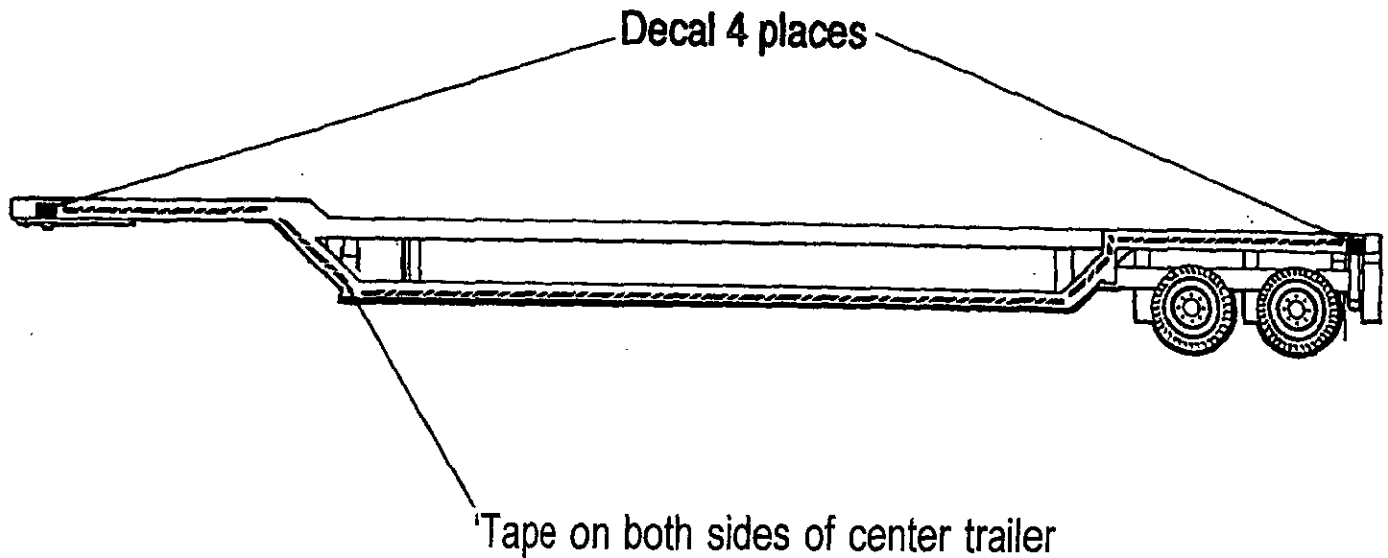
Chance Rides, Inc. SPECIFICALLY DISCLAIMS ANY LIABILITY for losses associated with any unauthorized alterations and/or modifications or additions and instalations of unauthorized components.

PARTS LIST

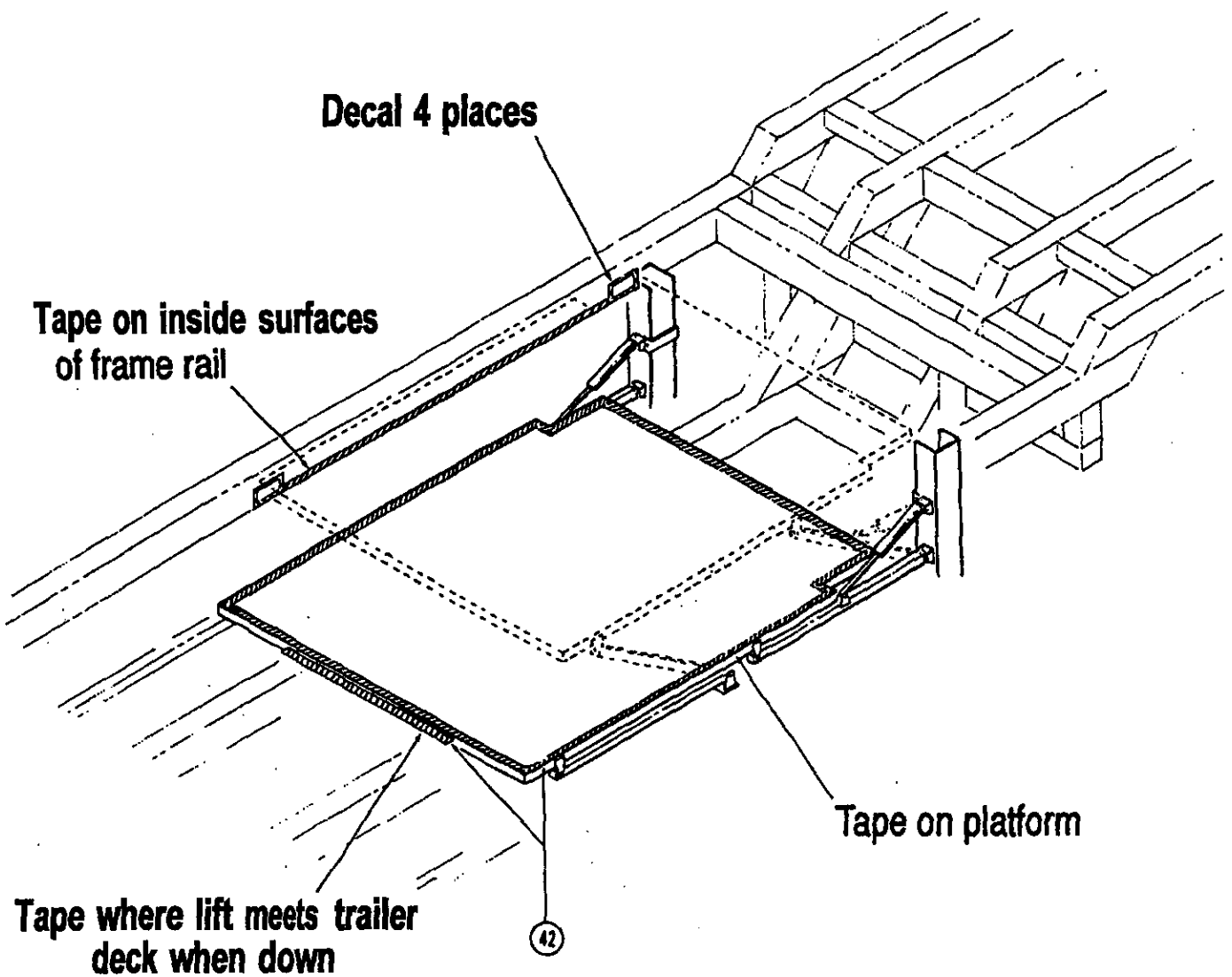
<u>Item</u>	<u>Part Number</u>	<u>Description</u>	<u>Quantity</u>
1.	26762500	Decal	8
2.	45001500	Tape	4 rolls

INSTALLATION INSTRUCTIONS

1. Apply one decal (item #1) to each of the four inside corners of the center trailer.
2. Apply tape (item #2) to both sides of the center trailer at areas where trailers come together.



3. Apply one decal (item #1) to the inside of the trailer frame at the four corners where the lift platform meets the trailer frame.
4. Apply tape (item #2) around top edge of lift platform and at points on trailer frame as shown.





NUMBER: B400R1103-0

DATE: NOV. 1, 1991

SUPERSEDES:

SERVICE BULLETIN

Effective Serial Number: All Units

Ride: GIANT GONDOLA WHEEL

Subject: Sweep Bolt Torque

Due to loads at the sweep pivot joints during set-up, tear-down, and operation of the GIANT GONDOLA WHEEL, Chance Rides, Inc. has become aware that it is possible for the bolts at these locations to become loose. If this occurs, the load is transmitted through the bolt rather than through the bushing. This will cause wear to the bolt which could result in failure and possible personal injury.

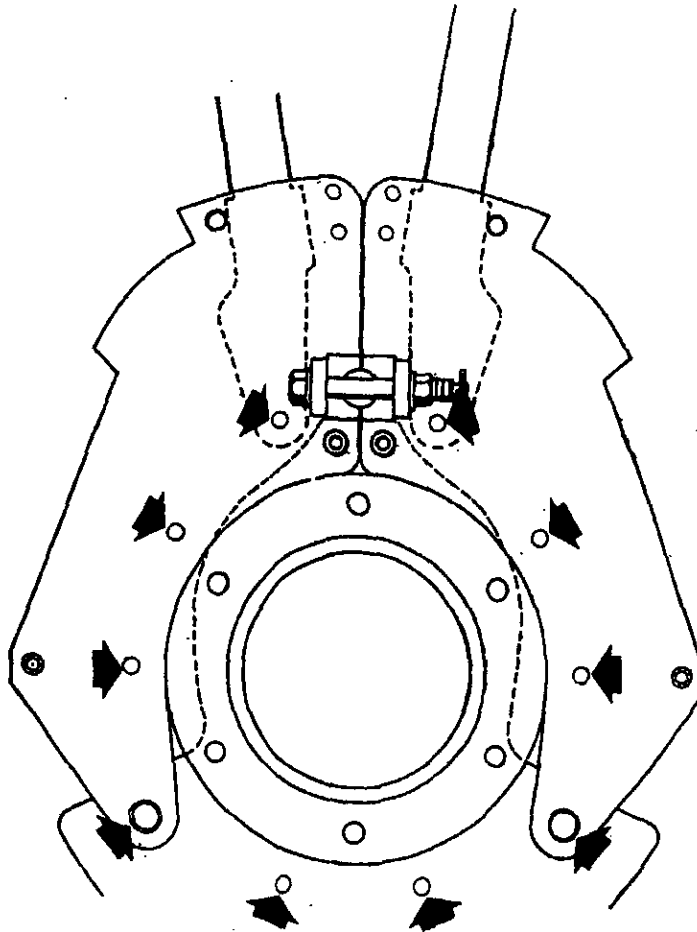
Chance Rides, Inc. requires all owner/operators of GIANT GONDOLA WHEEL amusement rides to check the torque of all sweep to axle assembly bolts at each set-up or once a month, whichever occurs first. Unit number 400-001-88 has 3/4" diameter coarse thread bolts. All other units have 1" diameter coarse thread bolts. REFER TO THE TORQUE CHART IN THE OWNER'S MANUAL FOR PROPER TORQUE FOR THE SPECIFIC BOLT USED.

All work must be performed by qualified personnel, capable of understanding the function of the parts and their proper installation.

NOTICE

Use only those components authorized, specified or provided by Chance Rides, Inc.

Chance Rides, Inc. SPECIFICALLY DISCLAIMS ANY LIABILITY for losses associated with any unauthorized alterations and/or modifications or additions and installations of unauthorized components.



SWEEP PIVOT JOINTS
(10 LOCATIONS AT EACH END OF THE AXLE ASSEMBLY)



NUMBER: B400R1114-0

DATE: JULY 20, 1992

SUPERSEDES:

SERVICE BULLETIN

Effective Serial Number: All Portable Units - Chance Rides, Inc.

Ride: GIANT GONDOLA WHEEL Subject: Caution Raise Floor Decal

Chance Rides, Inc. GIANT GONDOLA WHEEL amusement ride is equipped with movable floor sections in front of the tower lift cylinders. These floor sections must be lowered into place after the towers have been raised during set-up and then raised before lowering the towers during tear-down. If these floor sections are not raised prior to lowering the towers, damage to the equipment and possible injury to personnel can result.

Chance Rides, Inc. has developed a safety decal to advise operators of the need to raise the floor sections before lowering the towers. Each ride requires four decals and are available at no charge if ordered within 90 days of the date on this bulletin. All owner/operators of the above noted GIANT GONDOLA WHEELS are required to order and install these safety decals per the installation instructions found on this bulletin. Order part number 22198518.

All work must be performed by qualified personnel, capable of understanding the function of the parts and their proper installation.

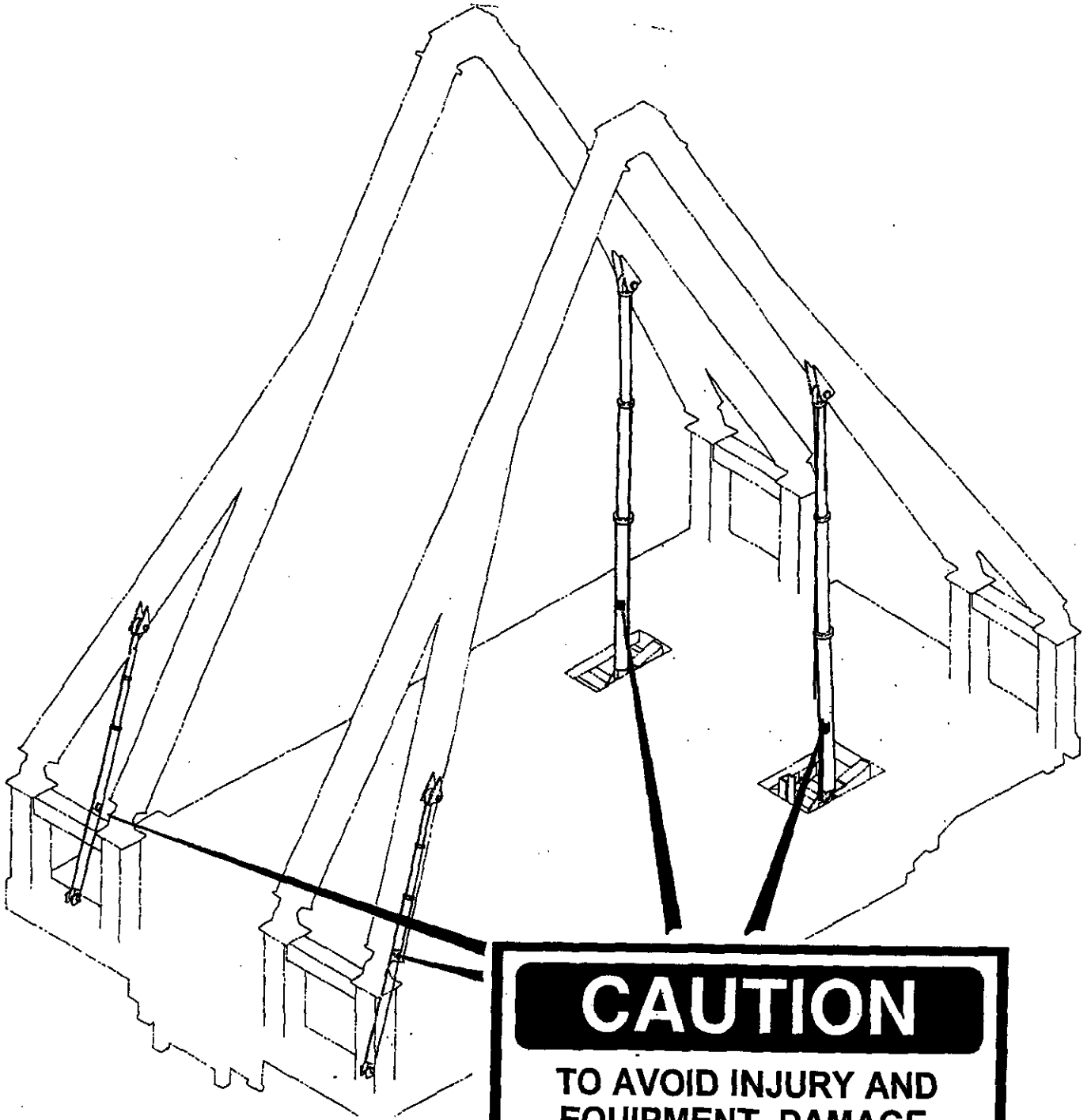
NOTICE

Use only those components authorized, specified or provided by Chance Rides, Inc.

Chance Rides, Inc. SPECIFICALLY DISCLAIMS ANY LIABILITY for losses associated with any unauthorized alterations and/or modifications or additions and installations of unauthorized components.

INSTALLATION INSTRUCTIONS

1. Mount one on each of the tower lift cylinders.
2. **Mount** at eye level (approximately 5' above walkway) toward center of ride.



CAUTION

**TO AVOID INJURY AND
EQUIPMENT DAMAGE,
RAISE FLOOR SECTION
BEFORE 'LOWERING
TOWER LEG**



NUMBER: B400R1132-0

DATE: AUG. 2, 1993

SUPERSEDES:

SERVICE BULLETIN

Effective Serial Number: ALL UNITS

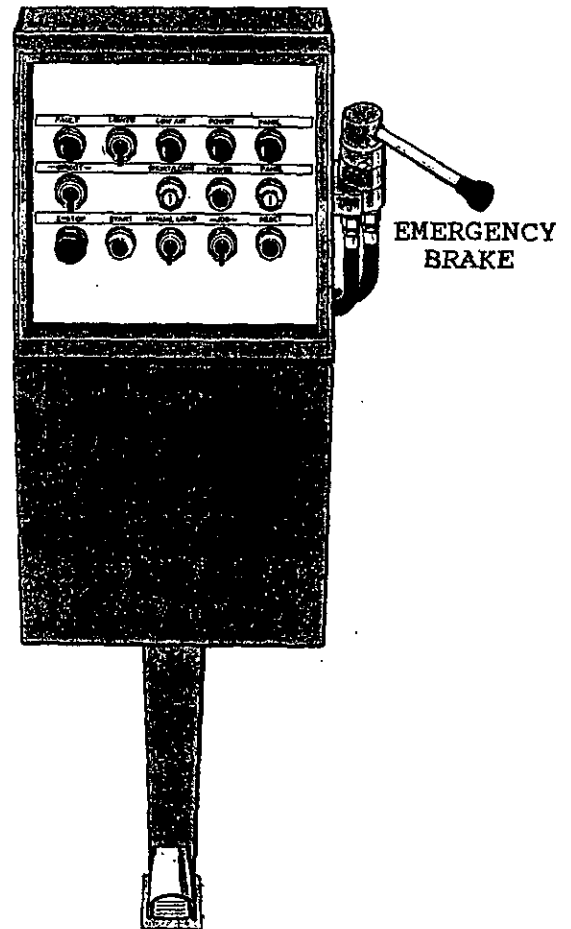
Ride: GIANT GONDOLA WHEEL

Subject: EMERGENCY BRAKE USE

The Chance Rides, Inc. GIANT GONDOLA WHEEL amusement ride is equipped with an emergency air-operated brake. This emergency brake is attached to the outside of the operator's control stand and is intended to be used in an emergency situation such as in the event of a loss of power to the ride.

If power is lost, the ride will coast to a stop. The emergency brake can then be applied. If power is not restored, the passengers can be unloaded by manually rotating the ride. In such an emergency situation, unload only two gondolas at a time to keep the wheel balanced.

In addition to the emergency procedure outlined above, Chance Rides, Inc. requires the emergency brake to be set during the installation of gondolas to the ride and removal of gondolas from the ride. This provides protection in the case of a power failure to personnel who are working around and between the gondolas.





NUMBER: B400R1147-0

DATE: JAN. 14, 1994

SUPERSEDES:

SERVICE BULLETIN

Effective Serial Number: All Units

Ride: GIANT GONDOLA WHEEL Subject: Gondola Door Inspection

Chance Rides, Inc. has become aware that the door rod actuator on the GIANT WHEEL gondola door could fail if improperly adjusted or maintained, refer to Chance Rides, Inc. bulletin number B400R1046-A. If this occurred the door could swing outward, contacting the ride structure as the ride is being operated. The Chance Rides, Inc. owner's manual cautions owner/operators of the need to maintain the GIANT GONDOLA WHEEL amusement ride to the manufacturer's specifications and particularly, not to operate the ride unless all parts of the gondola and the gondola doors are in good condition.

All owner/operators of the above noted amusement rides are required to inspect the door actuator mechanisms. Any parts that are bent, show excessive wear or otherwise do not meet the manufacturer's specifications must be replaced. The torque of the shoulder bolt holding the crank disc assembly must also be checked. Proper torque for this bolt is 19 to 24 foot pounds.

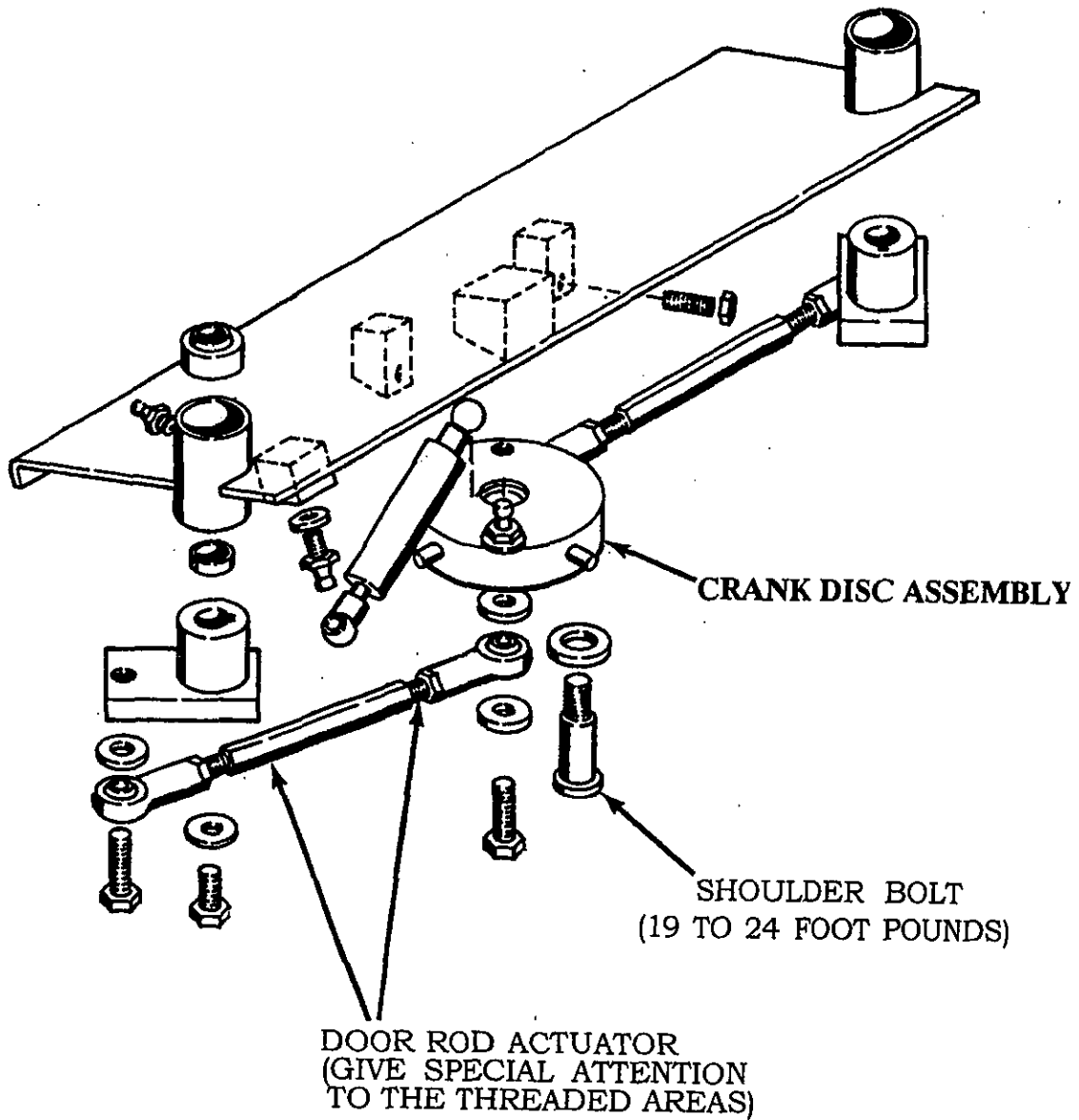
All work must be performed by qualified personnel, capable of understanding the function of the parts and their proper installation.

NOTICE

Use only those components authorized, specified or provided by Chance Rides, Inc.

Chance Rides, Inc. SPECIFICALLY DISCLAIMS ANY LIABILITY for losses associated with any unauthorized alterations and/or modifications or additions and installations of unauthorized components,

Complete the inspection and return the Certification Of Compliance within fifteen (15) days from the receipt of the bulletin.



NOTE: If shoulder bolt holding the crank disc assembly is loose, remove, clean and reinstall using red Loctite and 19 to 24 foot pounds of torque.



NUMBER: B400R1154-0

DATE: APR. 4, 1994

SUPERSEDES:

SERVICE BULLETIN

Effective Serial Number: All Units

Ride: GIANT GONDOLA WHEEL Subject: Sweep and Spreader Lighting

Chance Rides, Inc. has become aware of at least one case in which all of the bases of the sweep lights enclosed by one light cover on the GIANT GONDOLA WHEEL amusement ride broke. When this occurred, the section fell from the ride.

Chance Rides, Inc. requires all owner/operators of the above noted amusement rides to follow the rework safety precautions in this Service Bulletin. Failure to follow the rework instructions outlined in this bulletin prior to the operation of the ride can result in injury to patrons and/or employees.

All work must be performed by qualified personnel, capable of understanding the function of the parts and their proper installation.

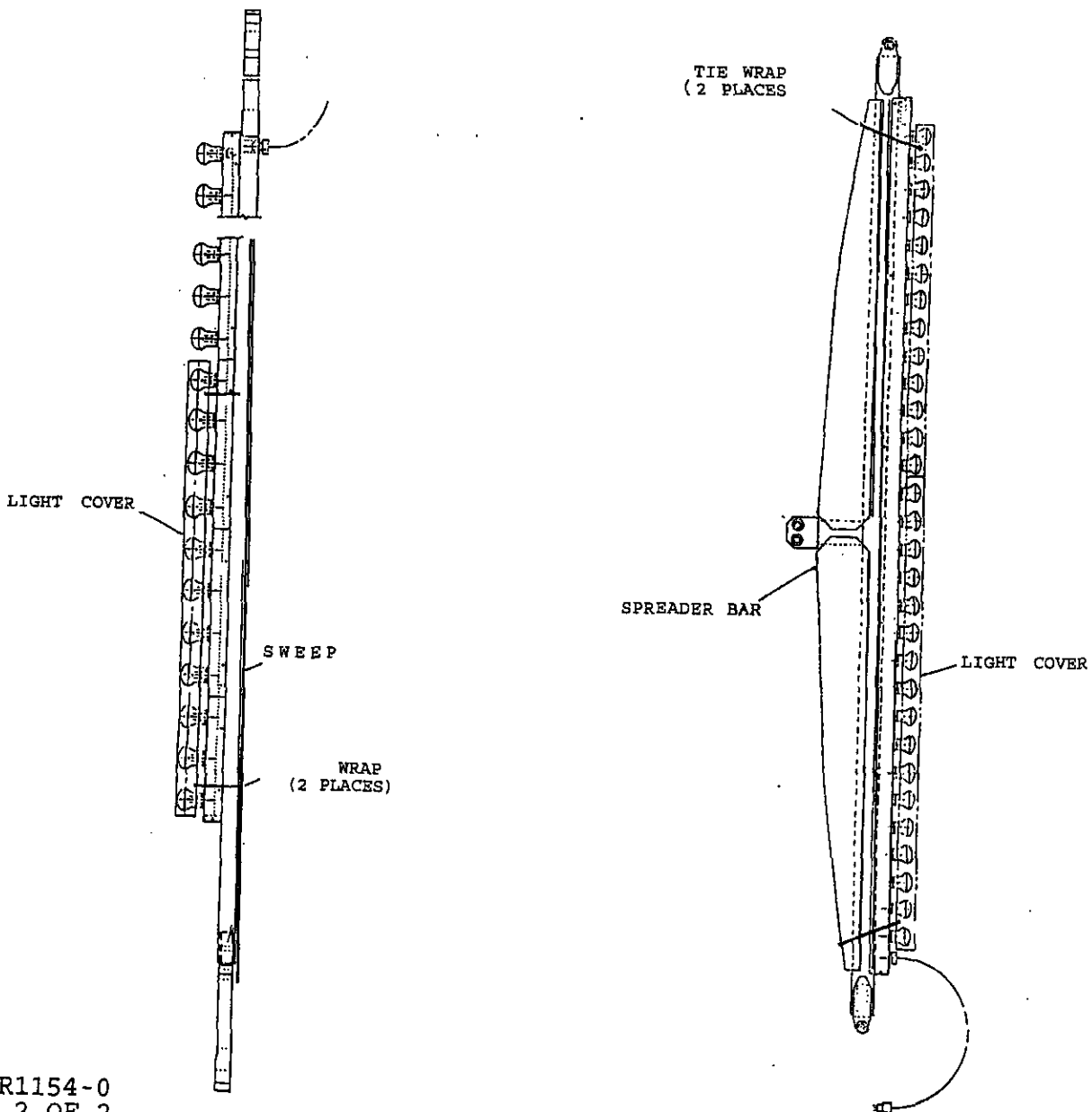
NOTICE

Use only those components authorized, specified or provided by Chance Rides, Inc.

Chance Rides, Inc. SPECIFICALLY DISCLAIMS ANY LIABILITY for losses associated with any unauthorized alterations and/or modifications or additions and installations of unauthorized components.

Rework Instructions

1. Remove the #10 x 2-1/4 long machine screw in the light covers located on each sweep.
2. Using 3/16 black tie wraps, secure the light covers to the sweeps. Insert one tie wrap through the holes where the machine screws were removed and fasten around the sweep. Secure each light cover at two locations. NOTE: If cover only contains one hole, drill a second hole at the opposite end of cover for the second tie wrap.
3. Perform the above steps on all spreader bar light covers as well as all sweep light covers.



01287



NUMBER: B400R1175-0

DATE: May 17, 1996

SUPERSEDES:

America's Largest Manufacturer of Amusement Rides

SERVICE BULLETIN

Effective Serial Number: All Portable Units

Ride: GIANT GONDOLA WHEEL Subject: Bolting Flange
Annual Inspection

Chance Rides, Inc. has become aware of at least one case on a GIANT GONDOLA WHEEL amusement ride in which the weld around the bolting flange to the torque tube or the bearing housing has cracked. In this case, an inspection revealed evidence that the capscrews securing the torque tube to the bearing housing had not been properly tightened. Failure to properly tighten these capscrews could result in serious personal injury to the operators, passengers, and bystanders, as well as structural damage to the ride. At each set-up, the capscrews in these bolting flanges must be torqued to between 700 and 850 foot pounds, using a properly calibrated torque wrench, refer to Chance Service Bulletin numbers B400R1036A and B400R1058-0.

All owner/operators of the above noted amusement rides are required to inspect the bolting flanges annually using magnetic particle inspection as described in this bulletin. All inspections must be performed by a Level II or III person who is certified in magnetic particle inspection.

All work must be performed by qualified personnel, capable of understanding the function of the parts and their proper installation.

NOTICE

Use only those components authorized, specified or provided by Chance Rides, Inc.

Chance Rides, Inc. SPECIFICALLY DISCLAIMS ANY LIABILITY for losses associated with any unauthorized alterations and/or modifications or additions and installations of unauthorized components.

The following magnetic particle inspection technique meets the requirements of ASTM E709.

1. PRE-CLEAN:

- * Clean the weld area around the inside and outside of the bolting flanges on the torque tube and the bearing housing (8 places). This cleaning is to remove rust, paint or other contaminants.

2. MAGNETIZATION PROCESS:

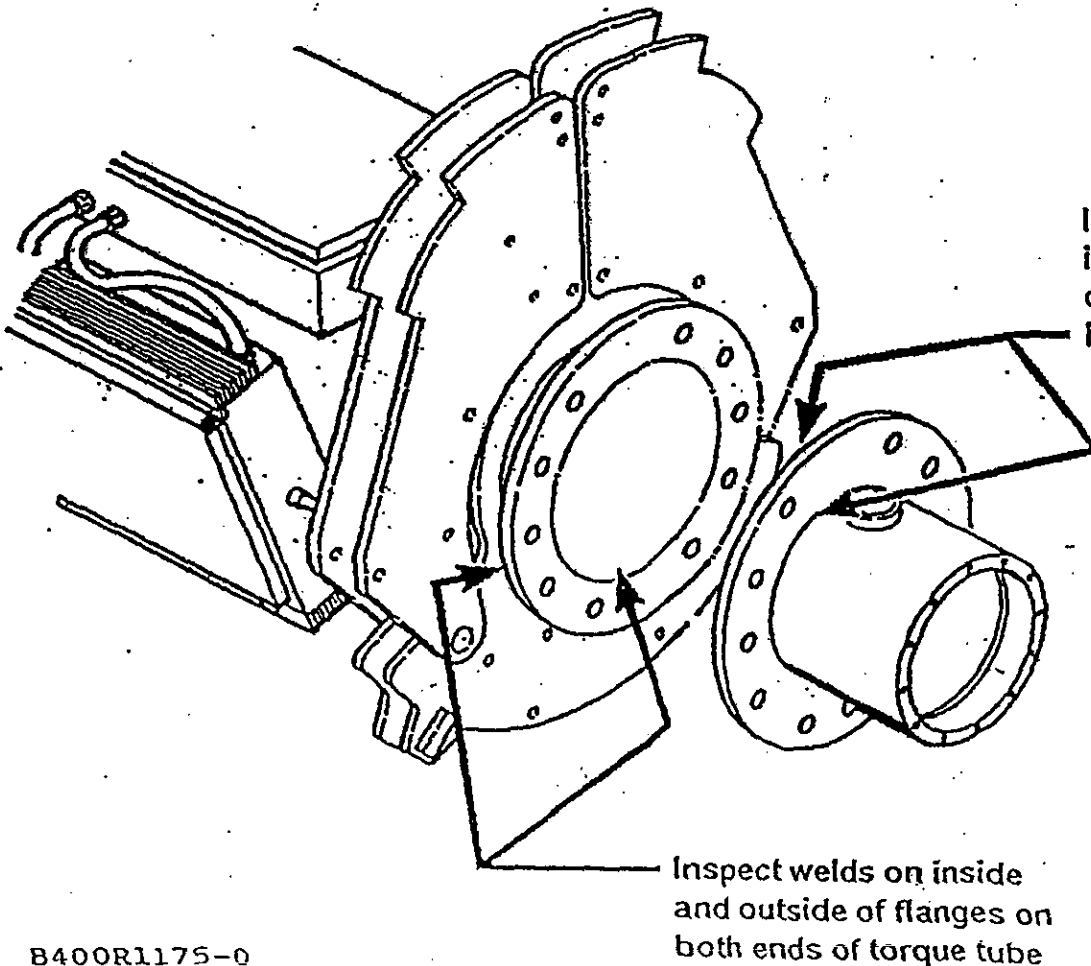
- * Using an A.C. yoke with articulating legs, position yoke over weld so flux field is 90 degrees to the weld.
- * Use continuous method for applying particles and current.

3. INSPECTION:

- * Thoroughly inspect all weld areas for linear indications.
- * If any linear indications are found, do not operate the ride, contact the Chance Rides, Inc. Customer Service Department at 1-800-242-6231.

4. POST-CLEAN:

- * Remove magnetic particles from weld areas.





CHANCE RIDES, INC.
4219 Irving
Wichita, KS 67277-2328
U.S.A.
Phone: 1-800-242-6231 • FAX: 1-316-942-7416
Website: www.rides.com

Bulletin No:	B400R1201-0
Release Date:	August 29, 1998
Effective Date:	August 29, 1998
Supersedes:	N/A
Completion Date:	On-going
Page:	1 of 2

SERVICE BULLETIN

Ride Manufacturer: CHANCE RIDES, INC. Affected Production Dates: ALL

Ride Name: GIANT GONDOLA WHEEL Affected Serial Nos.: ALL

Model No.: 400

Abstract of Issue:
SWEEP CAPSCREW INSPECTION AND REPLACEMENT

Reason For Release:
Chance Rides, Inc. has become aware that if the hex head capscrews holding the sweeps to the center hub become loose, failure of the capscrews can occur. If this happens, damage to the gondolas and possible personal injury to passengers can occur.

Action to be Taken:
Chance Rides, Inc. requires all owner/operators of the above noted amusement rides to inspect the hex head capscrews securing the sweeps to the center hub twice during each operating season. Inspection of these capscrews is to determine if they have become loose during operation of the ride.

Detail of Issue:
To determine if the capscrews have become loose, perform the following two tests.

1. Inspect the painted hub section around the capscrew head and the nut in the areas illustrated on the following page. If the paint around the head and/or the nut is worn, it indicates the capscrew has become loose.
2. Use a torque wrench, set at 200 foot-pounds, on the nut, then on the head of each capscrew. If a capscrew or nut turns, it indicates the capscrew has become loose.

If there are indications of any capscrew having become loose, contact Chance Rides, Inc.

All work must be performed by qualified personnel, capable of understanding the function of the parts and their proper installation.

NOTICE

Use only those components authorized, specified or provided by Chance Rides, Inc.

Chance Rides, Inc. SPECIFICALLY DISCLAIMS ANY LIABILITY for losses associated with any unauthorized alterations and/or modifications or additions and installations of unauthorized components.



CHANCE RIDES, INC.

4219 Irving
Wichita, KS 67277-2328
U.S.A.
Phone: 1-800-242-6231 • FAX: 1-316-942-7416
Website: www.rides.com

Bulletin No: B400R1201-0

Release Date: August 29, 1998

Effective Date: August 29, 1998

Supersedes: N/A

Completion Date: On-going

Page: 2 of 2

Ride Manufacturer: CHANCE RIDES, INC.

Affected Production Dates: ALL

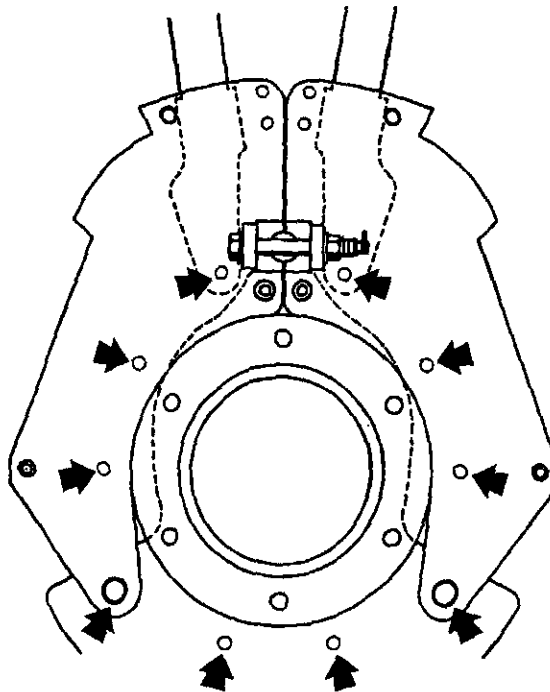
Ride Name: GIANT GONDOLA WHEEL

Affected Serial Nos.: ALL

Model No.: 400

Detail of Issue (continued):

INSPECTION POINTS



The tests outlined in this bulletin must be performed twice during each operating season.



CHANCE RIDES MANUFACTURING, INC.
4200 Walker
Wichita, KS 67277-2328
U.S.A.
Phone: 1-316-942-7411 • FAX: 1-316-942-2012
Website: www.rides.com
E-mail: rides@rides.com

Bulletin No: B400CRM136-0
Release Date: May 13, 2005
Effective Date: May 13, 2005
Supersedes: B400R1058-0
(issued 2/16/90 by Chance Rides, Inc.)
Completion Date: See Text
Page: 1 of 4

SERVICE BULLETIN

Ride Manufacturer: CHANCE RIDES MANUFACTURING, INC. Affected Production Dates: All
CHANCE RIDES, INC.

Ride Name: GIANT GONDOLA WHEEL Affected Serial Nos.: All

Model No.: 400

Abstract of Issue:
Axle Hub Fastener Inspection

Reason For Release:
The fasteners which secure the axle to the hub on the GIANT GONDOLA WHEEL must be installed and tightened correctly to prevent the capscrews from becoming loose. The specific length of capscrews and other components depends upon several variables, and must be determined for each specific ride. This bulletin summarizes the various configurations and the parts required for each.

Action to be Taken:
Chance Rides Manufacturing, Inc. requires all owner/operators of the above noted GIANT GONDOLA WHEEL amusement rides to inspect the axle hub fasteners and related parts as shown on the following pages of this bulletin.

The inspection must be completed immediately upon receipt of this bulletin. Thereafter, check the axle hub capscrews for proper torque at every set-up or once each operating season, whichever occurs first.

All work must be performed by qualified personnel, capable of understanding the function of the parts and their proper installation. Use only those components authorized, specified or provided by Chance Rides Manufacturing, Inc. All applicable OSHA safety standards and safe industry practices must be observed.

Observe all safety information contained in the manufacturer's manuals. Make available this bulletin and all related technical information to personnel using the equipment.

Chance Rides Manufacturing, Inc. issues notifications for the benefit of owners of amusement rides manufactured by Chance Rides Manufacturing, Inc. As a service to the industry, and in the interest of employee and public safety, Chance Rides Manufacturing, Inc. also issues notifications for the benefit of owners of amusement ride equipment for which the manufacturer no longer exists, such as the Allan Herschell Company, Chance Manufacturing Co., Inc., Chance Rides, Inc., etc. In doing so, Chance Rides Manufacturing, Inc. does not assume liability for losses associated with amusement ride equipment built by manufacturers other than Chance Rides Manufacturing, Inc.



CHANCE RIDES MANUFACTURING, INC.
4200 Walker
Wichita, KS 67277-2328
U.S.A.
Phone: 1-316-942-7411 • FAX: 1-316-942-2012
Website: www.rides.com
E-mail: rides@rides.com

Bulletin No: B400CRM136-0
Release Date: May 13, 2005
Effective Date: May 13, 2005
Supersedes: B400R1058-0
(issued 2/16/90 by Chance Rides, Inc.)
Completion Date: See Text
Page: 2 of 4

Ride Manufacturer: CHANCE RIDES MANUFACTURING, INC.
CHANCE RIDES, INC.

Affected Production Dates: All

Ride Name: GIANT GONDOLA WHEEL

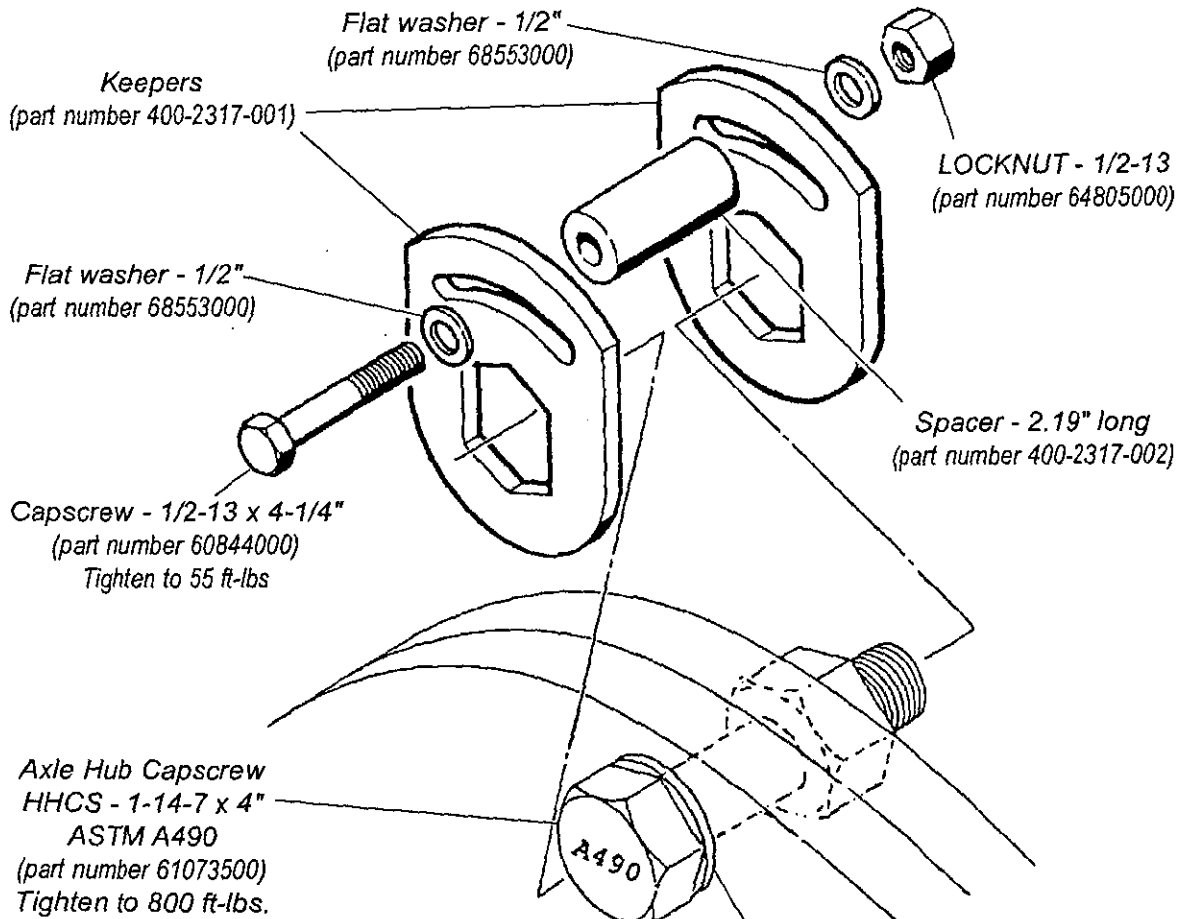
Affected Serial Nos.: All

Model No.: 400

Detail of Issue (continued):

Axle Hub Fasteners

Original Production Configuration up to Ride Serial Number 400-04302



NOTE: Some rides have six (6) capscrews in each flange. All other rides have ten (10) capscrews in each flange.

Hardened Flat washer- 1-1/4 ASTM A325
(part number 6685570)
Install under capscrew head only



CHANCE RIDES MANUFACTURING, INC.
4200 Walker
Wichita, KS 67277-2328
U.S.A.
Phone: 1-316-942-7411 • FAX: 1-316-942-2012
Website: www.rides.com
E-mail: rides@rides.com

Bulletin No: B400CRM136-0
Release Date: May 13, 2005
Effective Date: May 13, 2005
Supersedes: B400R1058-0
(issued 2/16/90 by Chance Rides, Inc.)
Completion Date: See Text
Page: 3 of 4

Ride Manufacturer: CHANCE RIDES MANUFACTURING, INC.
CHANCE RIDES, INC.

Affected Production Dates: All

Ride Name: GIANT GONDOLA WHEEL

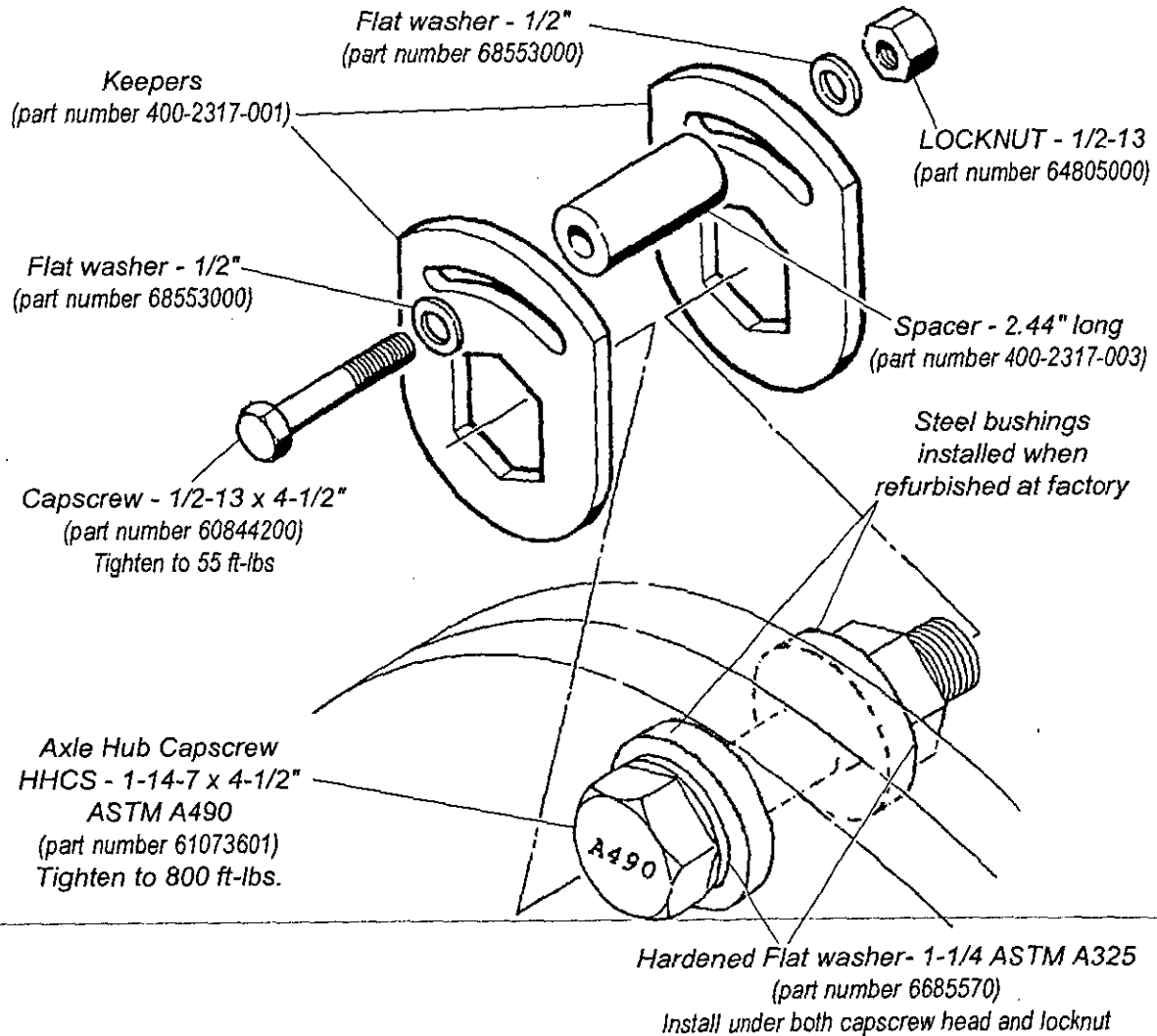
Affected Serial Nos.: All

Model No.: 400

Detail of Issue (continued):

Axle Hub Fasteners

Ride Serial Number 400-04302 and on, and All Rides With Factory Refurbished Hub





CHANCE RIDES MANUFACTURING, INC.
4200 Walker
Wichita, KS 67277-2328
U.S.A.
Phone: 1-316-942-7411 • FAX: 1-316-942-2012
Website: www.rides.com
E-mail: rides@rides.com

Bulletin No:	B400CRM136-0
Release Date:	May 13, 2005
Effective Date:	May 13, 2005
Supersedes:	B400R1058-0
(issued 2/16/90 by Chance Rides, Inc.)	
Completion Date:	See Text
Page:	4 of 4

Ride Manufacturer: CHANCE RIDES MANUFACTURING, INC.
CHANCE RIDES, INC.

Affected Production Dates: All

Ride Name: GIANT GONDOLA WHEEL

Affected Serial Nos.: All

Model No.: 400

Detail of Issue (continued):

Axle Hub Capscrew Torque Check Procedure

IMPORTANT: Before proceeding, check ALL COMPONENTS to make sure that the correct parts are installed for the specific ride configuration as shown on the previous pages of this bulletin. This includes, but is not limited to the following:

- Check the length and grade of axle hub capscrews
- Check for hardened flat washers installed in the locations shown for each specific configuration.
- Check the length of the spacers

1. Loosen the capscrews securing the keepers and remove the keepers.
2. Check each axle hub capscrew for 800 ft-lbs, using a torque wrench on the head of the capscrew.

IMPORTANT: Check that there are 2 to 4 capscrew threads showing beyond the locknut. This is a visual indication that the correct length of axle hub capscrew is installed.

3. Place one keeper over the axle hub capscrew head and one keeper over the nut.
4. Insert the 1/2" capscrew through the slot in the keeper, through the spacer and through the other keeper. Make sure flat washers are installed as shown in the illustration.
5. Secure the capscrew with a 1/2" locknut. Use a torque wrench to tighten the nut to 55 ft-lbs.
6. Install the remaining keepers on both sides of the axle in the same manner.

Check the axle hub capscrews for proper torque at every set-up or once each operating season, whichever occurs first.



CHANCE RIDES MANUFACTURING, INC.
4200 Walker
Wichita, KS 67277-2328
U.S.A.
Phone: 1-316-942-7411 • FAX: 1-316-942-2012
Website: www.rides.com
E-mail: rides@rides.com

Bulletin No:	P400CRM137-0
Release Date:	May 26, 2005
Effective Date:	May 26, 2005
Supersedes:	N / A
Completion Date:	N/A
Page:	1 of 2

NOTIFICATION

Ride Manufacturer: CHANCE RIDES, INC. Affected Production Dates: All

Ride Name: GIANT GONDOLA WHEEL Affected Serial Nos.: All

Model No.: 400

Abstract of Issue:

Drive Rim Reinforcement Kit

Reason For Release:

After years of service, the drive rims on the GIANT GONDOLA WHEEL can develop cracks near the sweep ends. Depending upon the severity of damage, a repair can sometimes be specified by Chance Rides Manufacturing, Inc. If damage and/or past repairs are extensive, repair is not possible, and the part must be replaced.

Chance Rides Manufacturing, Inc. has developed a reinforcement plate which can be installed on structurally sound drive rims to extend their service life.

Action to be Taken:

Owners of the above noted GIANT WHEEL amusement rides can, at their option, install the reinforcement plates on the drive rims. The ride is acceptable and safe to operate with or without the reinforcement plates, however, if the reinforcement plates are installed, all drive rims on that ride must have them.

INSTALLATION OF THIS KIT IS NOT MANDATORY. It is intended only to reduce downtime and maintenance costs associated with repairing and/or replacing drive rims.

Order the Drive Rim Reinforcement Plate Kit, part number K400CRM137-1, which includes all parts necessary for one ride. Detailed installation instructions are included with the kit.

All work must be performed by qualified personnel, capable of understanding the function of the parts and their proper installation. Use only those components authorized, specified or provided by Chance Rides Manufacturing, Inc. All applicable OSHA safety standards and safe industry practices must be observed.

Observe all safety information contained in the manufacturer's manuals. Make available this bulletin and all related technical information to personnel using the equipment.

Chance Rides Manufacturing, Inc. issues notifications for the benefit of owners of amusement rides manufactured by Chance Rides Manufacturing, Inc. As a service to the industry, and in the interest of employee and public safety, Chance Rides Manufacturing, Inc. also issues notifications for the benefit of owners of amusement ride equipment for which the manufacturer no longer exists, such as the Allan Herschell Company, Chance Manufacturing Co., Inc., Chance Rides, Inc., etc. In doing so, Chance Rides Manufacturing, Inc. does not assume liability for losses associated with amusement ride equipment built by manufacturers other than Chance Rides Manufacturing, Inc.



CHANCE RIDES MANUFACTURING, INC.
4200 Walker
Wichita, KS 67277-2328
U.S.A.
Phone: 1-316-942-7411 • FAX: 1-316-942-2012
Website: www.rides.com
E-mail: rides@rides.com

Bulletin No:	P400CRM137-0
Release Date:	May 26, 2005
Effective Date:	May 26, 2005
Supersedes:	N / A
Completion Date:	N/A
Page:	2 of 2

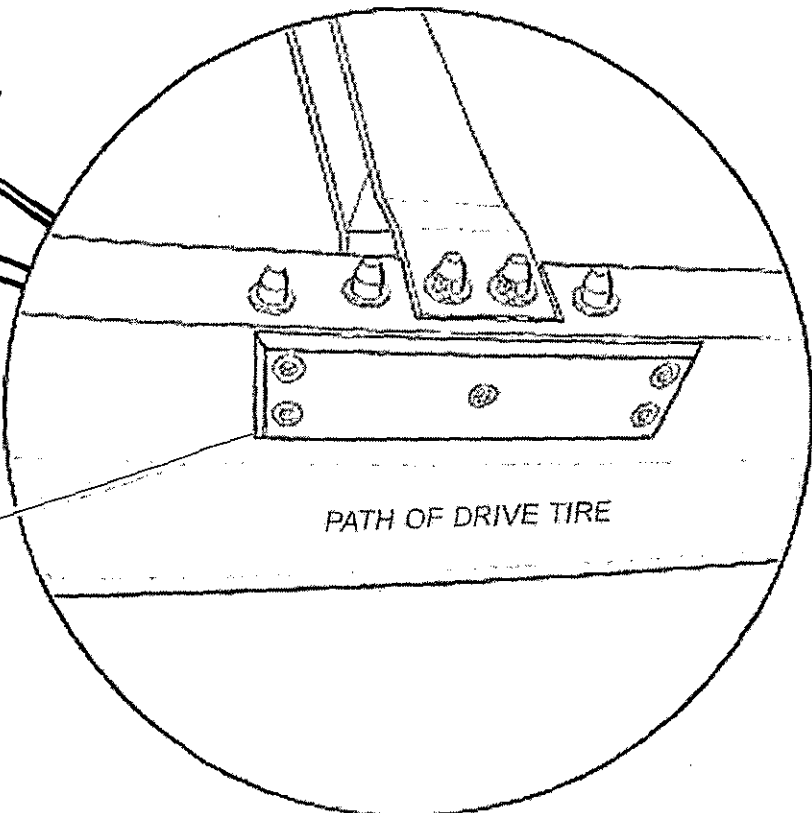
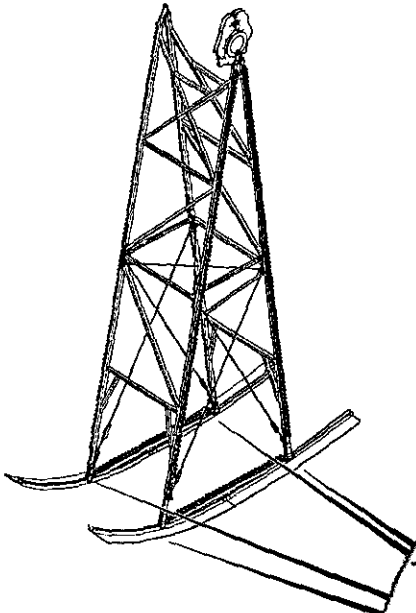
Ride Manufacturer: CHANCE RIDES, INC. Affected Production Dates: All

Ride Name: GIANT GONDOLA WHEEL Affected SerialNos.: All

Model No.: 400

Detail of Issue (continued):

Drive Rim Reinforcement Plate Kit
Part Number K400CRM137-1



Reinforcement plates and fasteners for all 40 drive rims are included in kit