

FIGURE 3.7

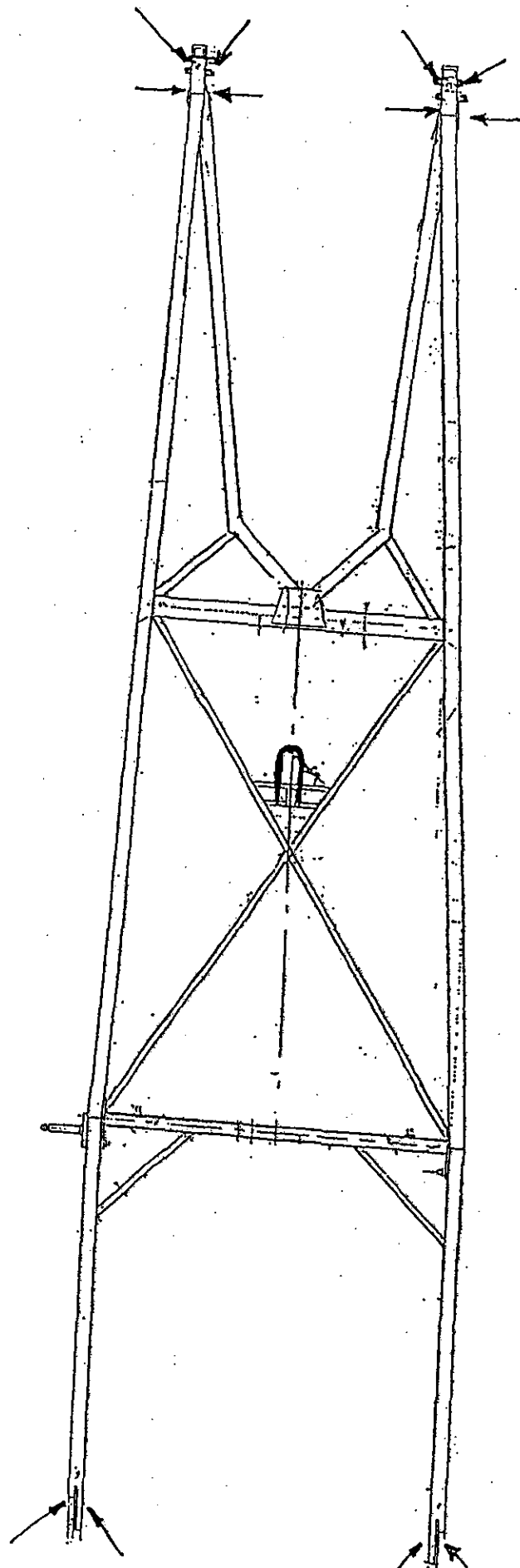
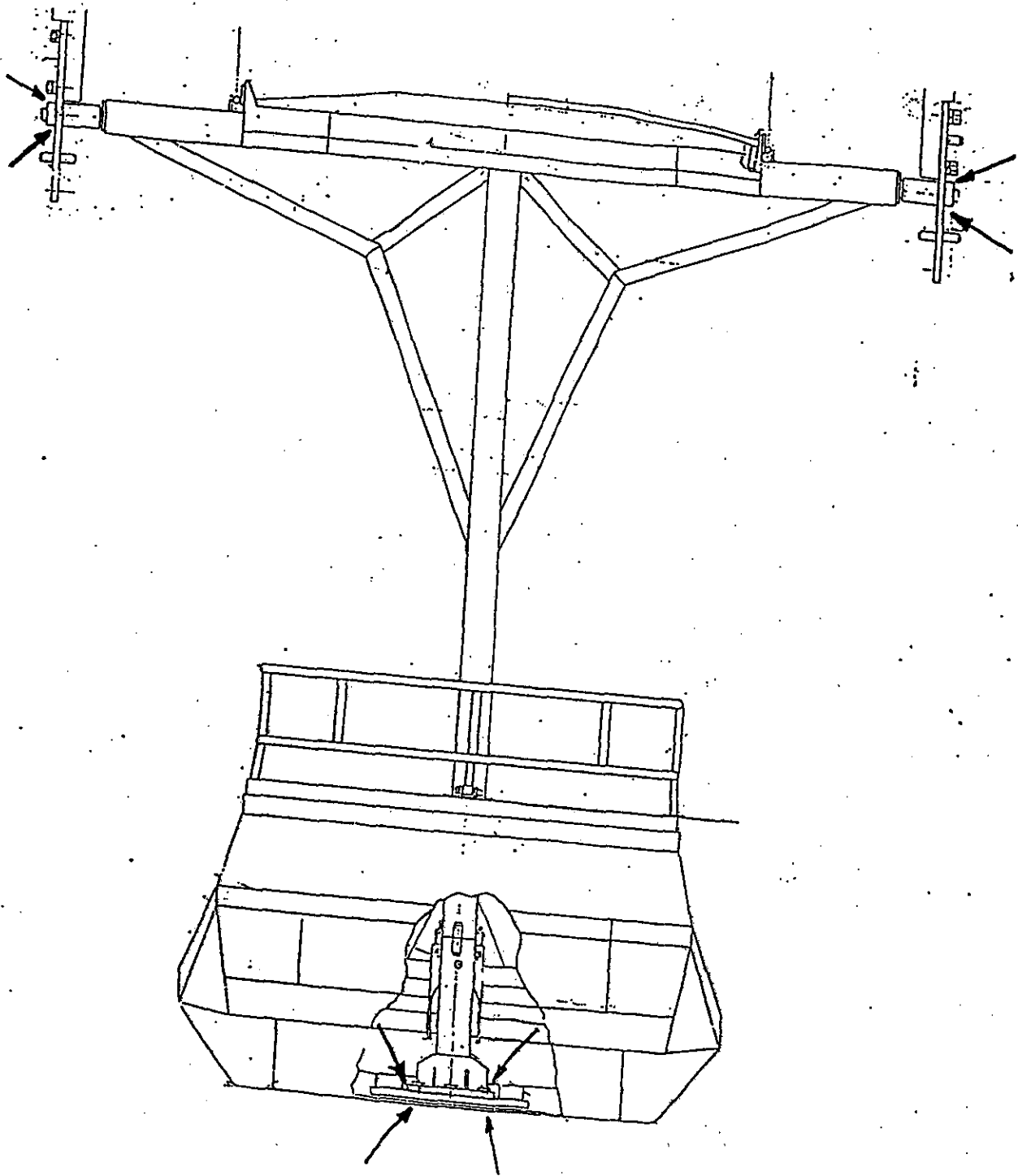


FIGURE 3.8





# **MILER COASTER, INC.**

PO BOX 20548  
PORTLAND, OREGON 97294

PHONE: 503/256-3019  
FAX: 503/255-2153

April 2, 2001

Scott Simpson  
S & T Amusements  
1020 Boardwalk  
Ocean City, NJ

RE: Annual Inspection / NDT for Children's Coaster S/N 710

Dear Scott,

Our manual has a schedule for annual inspection and NDT for this ride. Previously, this has applied to all rides, from those operating year round with 2000+ operating hours, to rides with less than half the hours.

We are aware of no structural issues that have arisen from the NDT that has been performed on the 30+ rides since the early 90's. As a result, we are presently reviewing this schedule ride-by-ride and changing the schedule to every two years for rides with low annual hours.

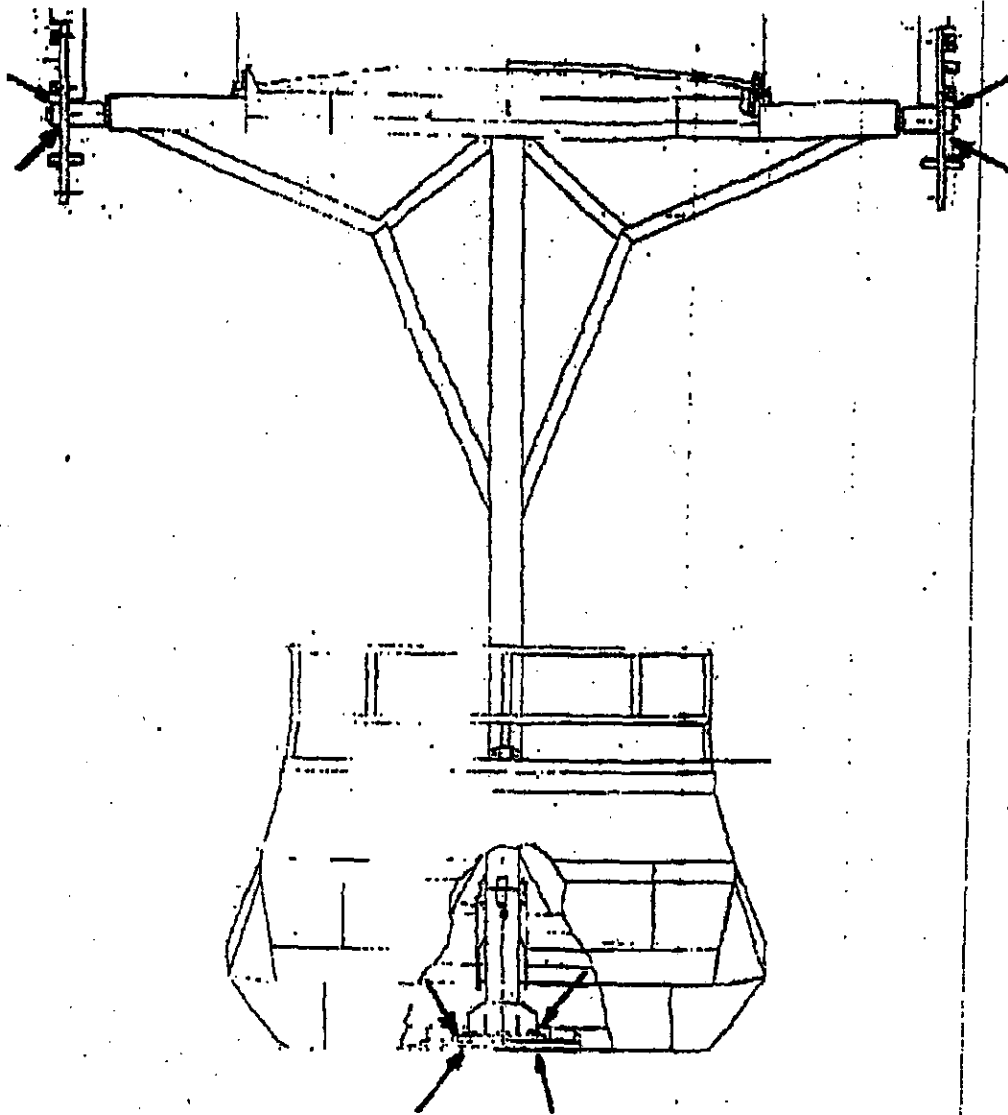
I have spent many days in your park while working on several projects and have seen the duty cycle for your coaster first-hand. It is our belief that your operating hours are much less than half the hours of our year round customers.

For these reasons, it is our opinion that your NDT schedule may be changed to every two years. We still recommend a close annual in-house visual inspection (without teardown) and, of course, the routine inspections as part of your daily operation.

Regards,

Miler Coaster, Inc.  
Fred Miler, President

FIGURE 3.8



Ferris wheel

# Ferris wheel by Mel Park

## N.D.T. INSPECTION OF WELDS

All the points indicated in the following drawings Figure 3.7 and 3.8 must be yearly checked with N.D.T. methods.

IN CASE OF A CRACKED WELD, PLEASE INFORM IMMEDIATELY MEL PARK FACTORY.

Every year, a copy of the satisfactory report of "non destructive examinations" carried out and signed by an independent body have to be included in the present manual.

**THE RIDE CANNOT BE USED IN PRESENCE OF A CRACKED WELD.**

# MEL PARK

MANUFACTURES OF AMUSEMENT RIDES

43037 MELARA (Rovigo) Italy  
 Via dell'Artigianato, 47  
 Tel. +39-425-89276 - Fax +39-425-89645  
 E-mail: melpark@tecnica.it  
 Codice fiscale e partita IVA IT 0055589 029 2  
 N. iscr. C.C.I.A.A. RO 041-2952

S & T Amusement Co.,  
 1020 Boardwalk  
 P. O. Box 358  
 Ocean City, NJ 08226  
 USA  
 Attn: Mr. Scott Sherman

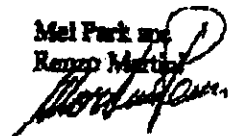
Melara, 29<sup>th</sup> March, 2001

Re.: N.D.T. Inspections and Visual Tests.

I undersigned Renzo Martini allow the above mentioned S & T Amusement Co., owner of our production 25 mt. Ferris Wheel, to carry out the NDT tests on the Ferris Wheel itself every two years. A copy of the satisfactory report of "non-destructive examinations", carried out and signed by the person responsible for maintenance at the park, must be included in the use and maintenance manual of the ride each time a NDT test is carried out. All the points indicated in the use and maintenance manual in figures 3.7 and 3.8 must be checked with NDT methods. In case of a cracked weld, please inform Mel Park snc immediately. The ride cannot be used in case of a cracked weld.

A VISUAL test must be made every month and a written report of it, carried out and signed by the person responsible for maintenance at the park, must be enclosed in the use and maintenance manual of the ride.

Mel Park snc  
 Renzo Martini



Encl.: 2

FIGURE 3.7

