

AUXILIARY HEAT SHIELD

AFFECTED MODELS

1999 and prior models of the Honda powered Prop/Jet, Model FPJ-4-P used on bumper boats.

PROBABLE CAUSE

Over the years, there have been isolated incidents of customers receiving burns from the Honda powered Prop/Jet. Under certain uncontrolled conditions a small rider could get a leg or other extremity wedged between the boat and the underneath section of the engine.

Note: The possibility for this happening is greatly increased for any of the following reasons:

1. Parks are allowing operation of the boats by children that are too small. To safely operate the boats the operator should be tall enough to sit to the back of the seat with their feet on the floor.
2. Small passengers in the boats are not sitting on the side of the operator. We have become aware that quite often the adult might seat the child on their lap or leg. This could wedge or push the child under the engine.
3. Some Prop/Jet engines have been mounted in other style boats by the parks themselves and quite possibly they are positioned much higher than would be in the Foster boat. The higher position allows for more access under the engine.

CORRECTIVE ACTION

Installing the auxiliary heat shield will add further protection for your customers and reduce your exposure to potential incidents.

Foster Manufacturing strongly recommends that you install the auxiliary heat shields as soon as possible. Installation is simple and will only take a couple of minutes per engine.

Refer to: Part #250304 Auxiliary Heat Shield \$24.75

If you have any questions, please contact us.

Foster Manufacturing Corporation
1652 Phillips Avenue, Racine, Wisconsin 53403
Phone: (262) 633-7073 Fax: (262) 633-4458
E-mail info@fostermfgcorp.com web site www.fostermfgcorp.com



Manufacturing Corporation

1652 Phillips Ave. • Racine, WI 53403-2116

(262) 633-7073 • Fax (262) 633-4458

E-mail: info@fostermfgcorp.com

Web site: www.fostermfgcorp.com

March 13, 2000

Carnival & Amusement Ride Safety Prgm
Bureau of Code Services
New Jersey Dept of Community Affairs
P.O. Box 808
Trenton, NJ 08625-0808

Attn: Joseph Palazzone, Chief

Dear Joseph Palazzone,

Foster Manufacturing Corp. would like to submit a recent Information Bulletin pertaining to a specific Bumper Boat Engine manufactured by Foster.

The Model FPJ-4-P engine has been manufactured and sold throughout the United States for the past six years.

As the bulletin indicates the auxiliary heat shield is a means of added protection under certain conditions.

Bulletins have been sent to all our customers of record and have also been published on our website, www.fostermfgcorp.com.

It is our intent to keep all regulatory agencies informed of any bulletins pertaining to our products and at this time we wish to submit a copy for your files.

Should you have any questions, please don't hesitate contacting us.

Respectfully,

A handwritten signature in black ink that reads "Steve Sharkozy". The signature is written in a cursive, slightly slanted style.

Steve Sharkozy
Vice President

SS/dd

Enclosure

INFORMATION BULLETIN

December 13, 2004

*Strongly recommended for FPJ-4-P used in J&J Boats.

*NOTE: Will add additional guarding when installed on standard Foster Setup.

AUXILIARY EXHAUST SHIELD

AFFECTED MODELS

All models of the Honda powered Prop/Jet, Model FPJ-4-P used on bumper boats.

PROBABLE CAUSE

Over the years, there have been isolated incidents of customers receiving burns from the Honda powered Prop/Jet. Under certain uncontrolled conditions a small rider could get a leg or other extremity wedged between the boat and the underneath section of the engine and exhaust guard.

Note: The possibility for this happening is greatly increased for any of the following reasons:

1. Parks are allowing operation of the boats by children that are too small. To safely operate the boats the operator should be tall enough to sit to the back of the seat with their feet on the floor.
2. Small passengers in the boats are not sitting on the side of the operator. We have become aware that quite often the adult might seat the child on their lap or leg. This could wedge or push the child under the engine.
3. Some Prop/Jet engines have been mounted in other style boats by the parks themselves and quite possibly they are positioned much higher than would be in the Foster boat. The higher position allows for more access under the engine.

CORRECTIVE ACTION

Installing the auxiliary exhaust shield will add further protection for your customers and reduce your exposure to potential incidents.

Foster Manufacturing strongly recommends that you install the auxiliary exhaust shields as soon as possible. Installation is simple and will only take a couple of minutes per engine.

Refer to: Part #250320 Auxiliary Exhaust Shield \$25.00

If you have any questions, please contact us.

Foster Manufacturing Corporation
1652 Phillips Avenue, Racine, Wisconsin 53403
Phone: (262) 633-7073 Fax: (262) 633-4458
E-mail info@fostermfgcorp.com web site www.fostermfgcorp.com

AUXILIARY EXHAUST SHIELD INSTALLATION PROCEDURE

Note: The auxiliary exhaust shield will be installed to the Prop/Jet engine by using existing drainage holes and supplied hardware.

Step 1) Remove the Motor from the boat, turn off gas at the fuel valve, remove the gas tank.

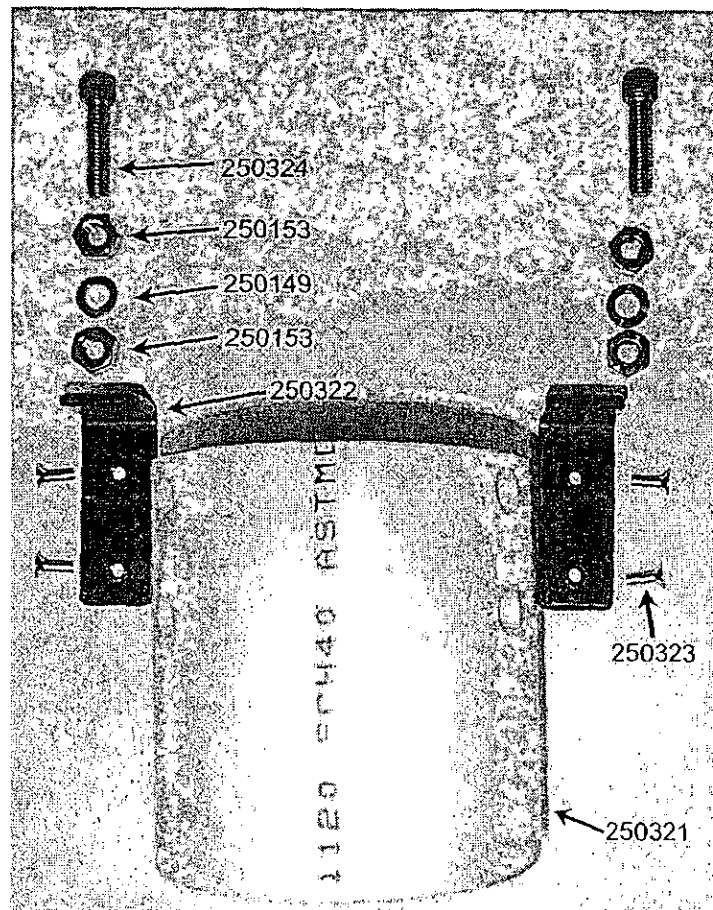
Step 2) Locate the (2) drainage holes nearest the exhaust tube. Place the (2) bolts (# 250324), through the holes and loosely tighten the nuts (# 250153) onto the bolts.

Step 3) Install brackets (# 250322), lock washers (# 250149), and Nuts (# 250153) on bolts (# 250324). DO NOT TIGHTEN

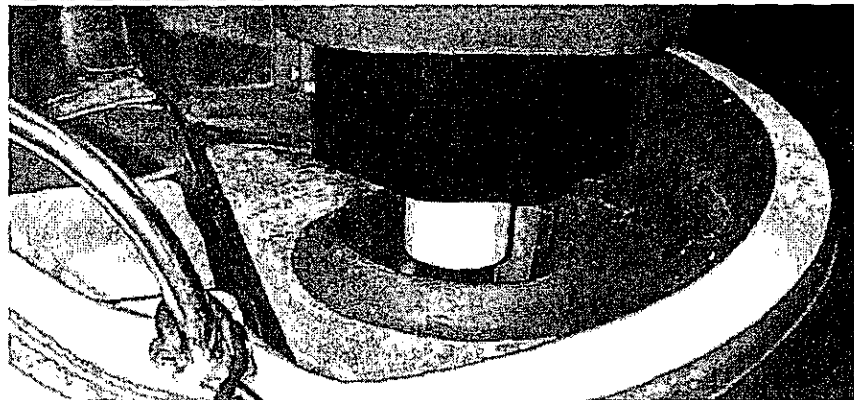
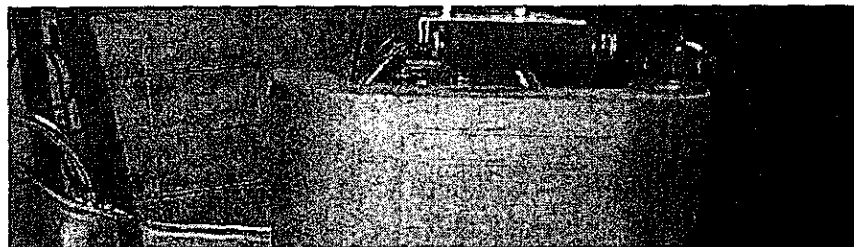
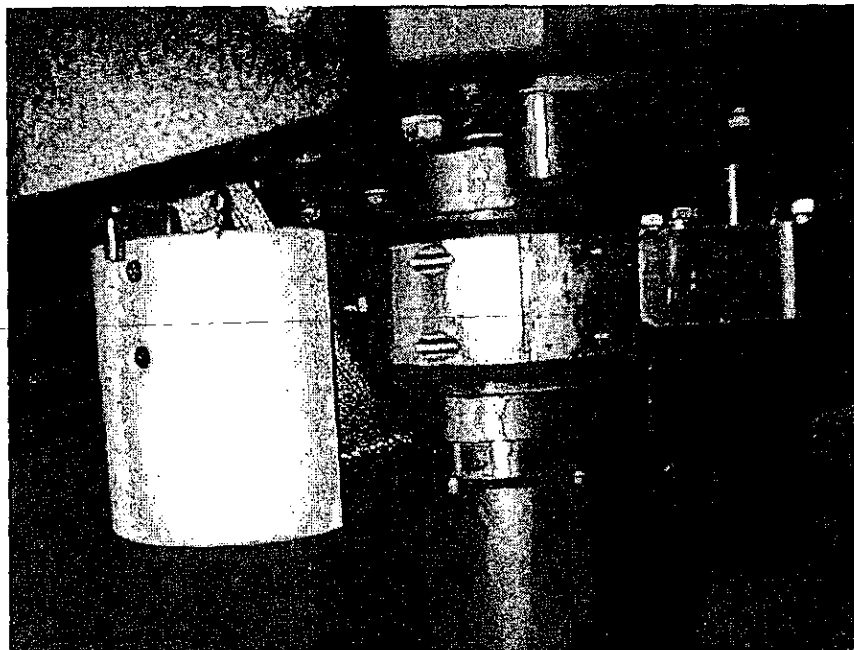
Step 4) Align auxiliary exhaust shield (# 250321), and install the screws (# 250323).

Step 5) Tighten all hardware securely.

Step 6) Replace the gas tank, replace the Motor into the boat, turn on gas at the fuel valve.



AUXILIARY EXHAUST SHIELD INSTALLATION PROCEDURE



Bumper Boat Checklist

Pre-Opening Inspection

Recorded Record for Week Ending _____

BOATS		Sunday	Monday	Tuesday	Wednesday	Thursday	Friday	Saturday
1.	Check engine oil and fill to proper level.							
2.	Inspect fuel system; check for any signs of leakage at the cap, tank, fittings or fuel line.							
3.	Properly fill fuel tank after verifying there are no leakage problems.							
4.	Verify complete propeller guard assembly is in place and properly secured.							
5.	Inspect fasteners and fittings for looseness. Tighten properly if required.							
6.	Inspect swivel bracket assembly to verify it is secure and lubricated.							
7.	Inspect fastening wing nuts that secure mounting bracket to the floor of the boat. Make sure they are tight.							
8.	Inspect throttle cable for smooth operation. Lubricate it if necessary.							
9.	Inspect for proper assembly and integrity of all guards for safe operating conditions.							
10.	Inspect Bumper Boat tube condition for proper floatation. Observe for signs of leakage.							
11.	Clean engine, boat and tube to assure a clean safe ride for all customers.							
12.	Start the engine and test ride the boat to verify proper operating conditions.							
POOL AND SURROUNDINGS								
1.	Check water chemistry. Inspect for harmful water conditions.							
2.	Inspect the condition of rope ties for docking boats.							
3.	Verify the condition and stability of handrails.							
4.	Verify that "Rules of Safe Operation" are properly positioned and visible.							
5.	Check fire extinguishers and verify proper placements.							
6.	Check integrity of fences and gates for proper functioning.							
7.	If operating instructions and "Rules of Safe Operation" are delivered to customers via a recording, verify proper functioning and clarity.							
8.	Remove all flammable materials from ride area.							

Note: These are basic concerns that should be addressed on a routine schedule. Each operation, depending on its own requirements should add to, but not eliminate from this checklist.

Foster Manufacturing

1652 Phillips Avenue, Racine, Wisconsin 53403

Phone: (262) 633-7073 Fax: (262) 6343-4459 e-mail: info@fostermfg.net web site: www.fostermfg.net

Form No. 99-4-29