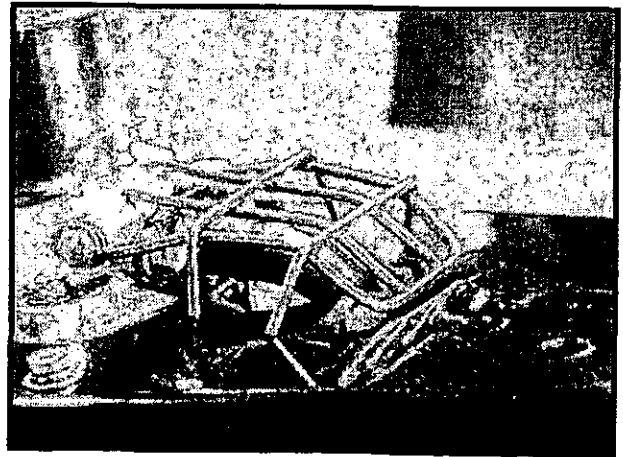
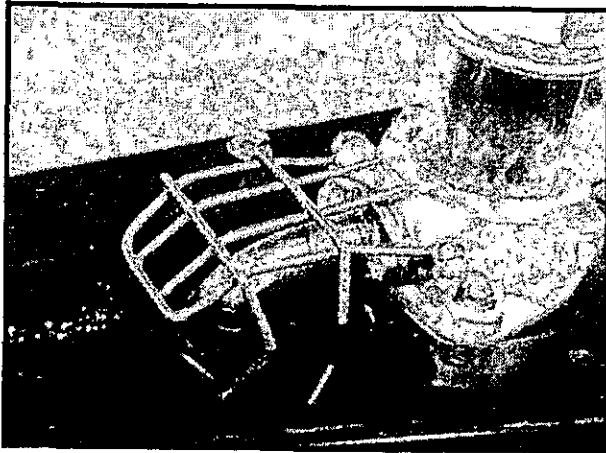


This Bulletin applies to Honda BF2A Outboard motors supplied prior to 1993. If you have motors without heat shields you may contact our parts department for current

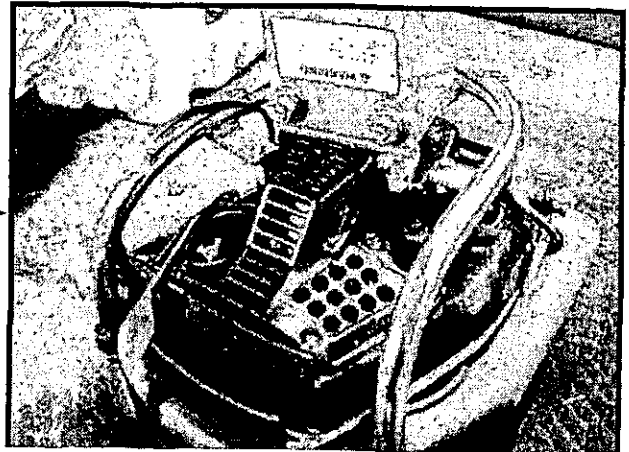


← Unprotected exhaust pipe

Protected with stainless exhaust guard



Post 1993 handlebar and exhaust setup →





34155-A Camino Capistrano San Juan Capistrano, CA 92675
714-493-4044 800-854-3140 FAX 714/661-2647

INSTALLATION 1993 HANDLEBAR

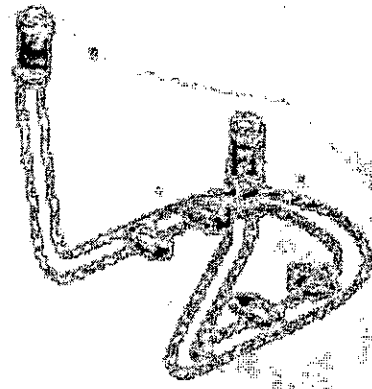
1. REMOVE OLD HANDLEBAR AND HANDLEBAR BRACKET.
2. REMOVE HAND GRIPS AND THROTTLE LEVER FROM HANDLEBAR.
3. INSTALL EXHAUST BOLTS, (#AH0768291) (NO. 1)
4. INSTALL EXHAUST PROTECTOR, (#AH1814870) (NO. 2)
5. REMOVE THE 10mm HEX HEAD BOLT (NO. 3)
6. ALIGN THE FOUR BRACKETS SPACERS TO THE HANDLEBARS (#HB002A) AND ENGINE CASE.
7. USING FOUR 6mm x 60mm BOLTS INSTALL NEW HANDLEBAR (NO. 4) ONTO MOTOR.
8. INSTALL HAND GRIPS, THROTTLE LEVER AND ROUTE THROTTLE CABLE.
NOTE: ZIP TIE THROTTLE CABLE TO THE HANDLEBARS TO PREVENT CUSTOMER VANDALISM.

IF YOU HAVE ANY PROBLEMS WITH THESE INSTRUCTIONS FEEL FREE TO GIVE ME A CALL 1-800-854-3140

DAN HANSEN
TECHNICAL REPRESENTATIVE

J&J Amusements, Inc.

11104 Broadway, Dept. 1, Los Angeles, CA 90019
 (213) 441-4221 (213) 441-4222 FAX (213) 441-4223



ALL NEW FOR 1988

BETTER RIDE COOLER, LESS WEIGHT, ALL STAINLESS STEEL

WILL LAUNCH FASTER

THE PROVISIONS MAKE THE RIDE TO COMPARE WITH THE BEST

QTY	DESCRIPTION	UNIT PRICE	TOTAL
1	ROLLER	18.00	18.00
1	WHEELS	18.00	18.00
1	AXLES	1.50	1.50
1	TRACK	.50	.50
1	BRACKETS	10.00	10.00
	TOTAL		56.00



Photo 1 - Suspect in the morning

Faded, illegible text at the top of the page, possibly a header or title.



Faded, illegible text in the middle of the page, possibly a description or notes.



Photo 2 - Suspect in the morning



Photo 3 - Suspect in the morning

SERVICE BULLETIN

1-800-854-3140 (714) 493-4033
(Outside CA) (Inside CA)

INSTALL EXHAUST PROTECTOR NOW!!!

AFFECTED UNITS: J&J Amusements 1992 Honda BF2 bumper boat motors

The exposed exhaust pipe on your Honda BF2A motor, (see Fig. 1) under certain conditions can burn a customer. A leg or other part of the body could, under uncontrolled conditions, get wedged between the boat and the exposed exhaust pipe, causing irritation or a burn.

We are taking immediate action to eliminate the possibility of this occurring:

We are sending at no charge a custom made exhaust protector (see Fig. 2) with instruction on how to install. This is an easy fix (2 minutes per motor) and this should prove effective in eliminating the danger of heat from the exhaust contacting the customer. This is a metal guard custom made by J&J to address this problem.

When you receive the exhaust protectors, please contact Dan Hansen, J&J Technical Supervisor, at once by Phoning 1-800-854-3140.

Upon completion of the installation of these protectors, please notify J&J in writing that installation is complete and all J&J motors are now using these exhaust protectors.

J&J apologizes for any inconvenience associated with this project. The company takes great pride in its safety record with bumper boats and attempts to closely monitor and test all changes in its product.

(SEE ATTACHED SHEET FIG. 1 THROUGH 4 FOR INSTALLATION INSTRUCTIONS.)



33155-A Camino Capistrano San Juan Capistrano, CA 92675
714-493-4033 800-854-3140 FAX 714/661-2647

CODE: EXHAUST. PRO

NC
PROTECTORS

EXHAUST PROTECTOR INSTALLATION PROJECT

1. Larry Lloyd (817-699-5646)
PUTT PUTT GOLF -- 2508 Cross St -- Killeen, TX 76543
2. John Fechter, Gen Mgr. (602-961-0180)
FIDDLESTICKS -- 1155 W. Elliot Rd -- Tempe, AZ 85284
3. Steve Russ (808-982-5412)
SPLASH & BASH -- PO Box 519 -- Keaau, HI 96749
4. Jamie Behar (52-66-817810)
WORLD OF FUN -- & Behar Architects, Camino Elevado 431 --
Bonita, CA 92002
5. Paul Zellar (404-840-1123)
MOUNTASIA OF EAST COBB -- 5555 Triangle Pky, Ste. 120 --
Norcross, GA 30092
(Ship to: 1099 Johnson Ferry Rd., Marietta, GA 30068)
6. Paul Zellar (803-458-7329)
MOUNTASIA -- 712 Congaree Rd -- Greenville, SC 29607
(Mountasis Enterprises, Inc., 5895 Windward Pky, Ste 220, Alpharetta,
GA 30202 (404-442-6640)
7. Michael Jenkins (214-942-4474)
LARC -- 2151 Fort Worth Ave -- Dallas, TX 75211
8. Gary Cox (405-360-1800)
THE PERFECT SWING -- 1900 Ann-Branden Blvd. -- Norman, OK 73071
9. Steve Smith (618-624-7074)
CENTERFIELD PARK -- 5620 Old Collinsville -- Belleville, IL 62221
10. Ron Brown (405-364-2340)
TEXOMALAND FUN TRACK -- HC 68, Box 1202S -- Kingston, OK 73439
11. Tracey Hannigan (703-361-4451)
BEN LOMOND PARK -- 7500 Ben Lomond Pk -- Manassas, VA 22110
12. Mark Bray (206-356-7102)
BIG FOOT BUMPER BOATS -- 1713 Summit Lake Shore Rd -- Olympia,
WA 98502
13. Harry & Elaine Spence (606-663-4044)
COUNTRY JUNCTION -- 1321 Natural Bridge Rd -- Slade, KY 40376



11155-A Camino Capistrano / San Juan Capistrano, CA 92675
714 493-4033 800-854-3140 FAX 714/661-2647

PAGE 2 -- Exhaust Protector Installation Project

14. Michele Weller (201-646-5700)
TALCOTTVILLE/CONN GOLFLAND -- 51 Hartford Tpk -- Vernon, CT 06066
15. Wayne Darling (508-336-8307)
SEEKONK GRAND PRIX -- 110 Fall River Ave -- Seekonk, MA 02771
16. Mike Peuquet (219-462-1300)
INMAN'S REC CENTER -- 3201 Evans Ave -- Valparaiso, IN 46383
17. Frank Myatt (803-967-8551)
GOLDEN PARK GRAND PRIX -- 108 Balcome Blvd -- Simpsonville, SC 29681
18. David & Connie Spiering (217-446-7895)
TEE TIME FAMILY FUN CTR -- RR 2, Box 166A -- Danville, IL 61832
19. Marcelo Cavlieri (541-381-7692)
SERVTEC S.R.L. -- Lime 115, Piso 6 -- 1073 Buenos Aires, Argentina
20. Bill Ashton (714-986-4867)
SCANDIA -- 1155 S. Wanamaker Ave -- Ontario, CA 91761



33155-A Camino Capistrano / San Juan Capistrano, CA 92675
TEL 714/661-4033 800-854-3140 FAX 714/661-2647

SUBJECT: HONDA BF2
DATE: OCT 15, 1992

SERVICE BULLETIN
PRODUCT UPDATE

AFFECTED UNITS----- J&J AMUSEMENTS 1992 HONDA BF2 BUMPER BOAT
MOTORS

SYMPTOM- ----- AN EXPOSED EXHAUST PIPE, UNDER CERTAIN
CONDITIONS CAN BURN A CUSTOMER. A LEG OR
OTHER PART OF THE BODY COULD, UNDER
UNCONTROLLED CONDITIONS, GET WEDGED
BETWEEN THE BOAT AND THE EXPOSED EXHAUST
PIPE.

CORRECTIVE ACTION- YOU MUST INSTALL THE EXHAUST PROTECTOR
AT ONCE. SUPPLIED EXHAUST PROTECTORS
SUPPLIED BOLTS
TO INSTALL THE EXHAUST PROTECTOR:
1. SHUT OFF GAS AND TURN MOTOR SO IT IS
STANDING ON ITS GAS TANK
2. LINE THE EXHAUST PROTECTOR UP OVER THE
EXPOSED EXHAUST PIPE AND INSTALL USING
BOLTS SUPPLIED.

IF YOU HAVE ANY QUESTIONS ABOUT THIS MATTER, CONTACT DAN HANSEN,
TECHNICAL SUPERVISOR AT 1-800-854-3140 OR 714-493-4033.

J&J Amusements, Inc.

33155-A Camino Capistrano / San Juan Capistrano, CA 92675
714/493-4033 800-854-3140 FAX 714/661-2647

DATE: OCT 15, 1992

TO: Terry Weerts
Jeff Morton
Gary Lamprecht

FROM: Dan Hansen
J&J Amusements

SUBJECT: The burn problem caused by the exposed exhaust pipe
on the HONDA BF2 bumper boat motor.

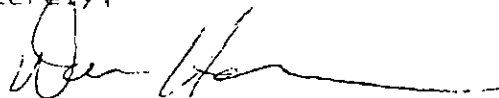
Gentlemen: I have sent to the following Celebration Stations a
service bulletin that has instructions on how to
install the exhaust protector at no cost to
Celebration Station on 10/15/92, 2 DAY AIR.
(see attached bulletin)

I will send a exhaust protector at no charge for each
Honda motor we sold to you in 1992. If you lose or
need extra exhaust protectors, they will cost
\$9.95 each.

Houston South	25 exhaust protectors	50 bolts
Houston North	34 exhaust protectors	68 bolts
Austin	34 exhaust protectors	68 bolts
Charlotte	Will ship on	10/23/92
Oklahoma	Will ship on	10/23/92
Greensboro	Will ship on	10/23/92
New Orleans	Will ship on	10/23/92
Mesquite	Those motors came stock with the	exhaust protector

If you have any questions please call.

Sincerely,



Dan Hansen
Technical Supervisor

CC Tom Smith
Dick Hall

TO ALL J&J CUSTOMERS WITH 1992 HONDA BF2'S

**SERVICE BULLETIN
PRODUCT UPDATE**

January 18, 1993

AFFECTED UNITS: J&J AMUSEMENTS 1992 HONDA BF2 BUMPER BOAT
MOTORS

AN EXPOSED EXHAUST PIPE, UNDER CERTAIN CONDITIONS CAN BURN A CUSTOMER. A LEG OF OTHER PART OF THE BODY COULD, UNDER UNCONTROLLED CONDITIONS, GET WEDGED BETWEEN THE BOAT AND THE EXPOSED EXHAUST PIPE.

CORRECTIVE ACTION: EXHAUST PROTECTOR OR 1993 HANDLEBAR RETROFIT

THE EXHAUST PROTECTOR COVERS THE EXHAUST PIPE TO PREVENT BURNS. THIS IS AVAILABLE FROM J&J AT NO COST.

NEW FOR 1993, HANDLEBAR RETROFIT.
MOTOR RUNS COOLER, LESS WEIGHT, ALL STAINLESS STEEL AND FITS ALL HONDA BF2'S.

THE FOLLOWING PARTS ARE NEEDED TO CONVERT YOUR J&J HONDA

QY	PART #	DESCRIPTION	PRICE
1	H8002A	HANDLEBAR, 93	\$ 49.95
1	AH1814870	PROTECTOR COMP, EXHAUST	\$ 23.32
4	AH0768291	BOLT, HEX 6X12	\$ 3.28
2	AH0285114	WASHER, 6mm	\$.64
1	NB004A	6X60mm HEX CAP	\$.72
4	AH2133346	SCREW, TAPPING, 5X16	\$ 6.48
J&J LIST PRICE			\$ 84.39 PER MOTOR

YOUR COST FOR THE RETROFIT \$ 62.20 PER MOTOR
PLUS SHIPPING

SERVICE BULLETIN

August 27, 1996

BF2-001

WATER COOLING NOTICE

AFFECTED MODELS

All Bumper Boats that use Honda BF2A and Suzuki DT2 outboard motors.

PROBABLE CAUSE

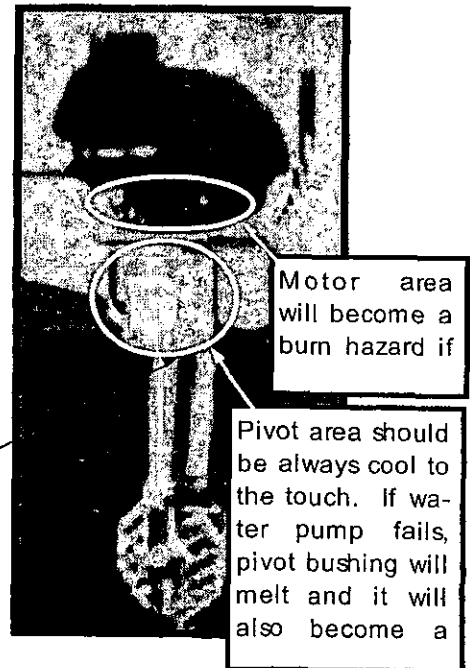
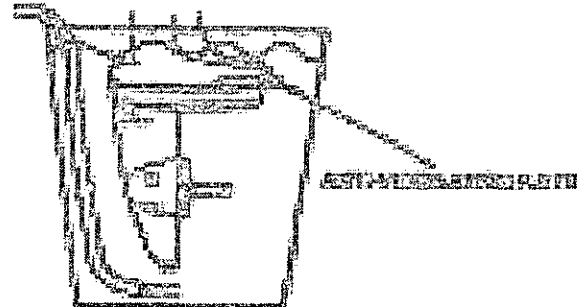
Motor must never be started with lower unit out of water. If the motor must be run, make sure there is water at least 2 inches above the anti-ventilation plate, (*A 5 gallon bucket works fine when testing in garage see illustration*) otherwise the water pump may not receive sufficient cooling water, and the motor will overheat. Running or trying to start motor without water can cause serious motor damage due to overheating, in addition the overheated motor may become a burn hazard.

WARNING: *Exhaust contains poisonous carbon monoxide which can cause unconsciousness and may lead to death. Never run the outboard in a*

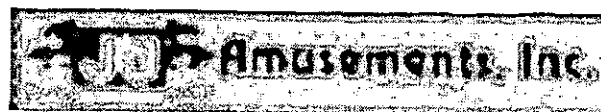
CORRECTIVE ACTION

Be sure that water flows from the pivot water check area while the motor is running. If not, stop the motor and determine the cause of the problem.

WARNING: OVERHEATING CAN CAUSE MOTOR AND PIVOT AREA TO BECOME A BURN HAZARD.



If you have any questions please call service at
(800) 854-3140 or (503) 304-8899



Installation Instructions

July, 22 1998

Smooth Tube Installation Instructions

Smooth Bumper Boat Tube Installation Instructions

MODELS INVOLVED

All Smooth Type Bumper Boat tubes.

SYMPTOM

The valve stem on this type of tube may rub against boat hull and cause boat damage and could also cause the tube to leak.

CORRECTIVE ACTION

Smooth type Bumper Boats Tubes should be mounted with the valve stem **facing down**. Before installing tube on boat make sure tube has at least 1 1/2 psi and check the valve stem for air leaks. *Note: To check for air leakage around valve stem, spray soapy water around the valve area and watch for bubbles.*

If you have any questions please call service at (800) 854-3140 or (503) 304-