



October 3, 1989

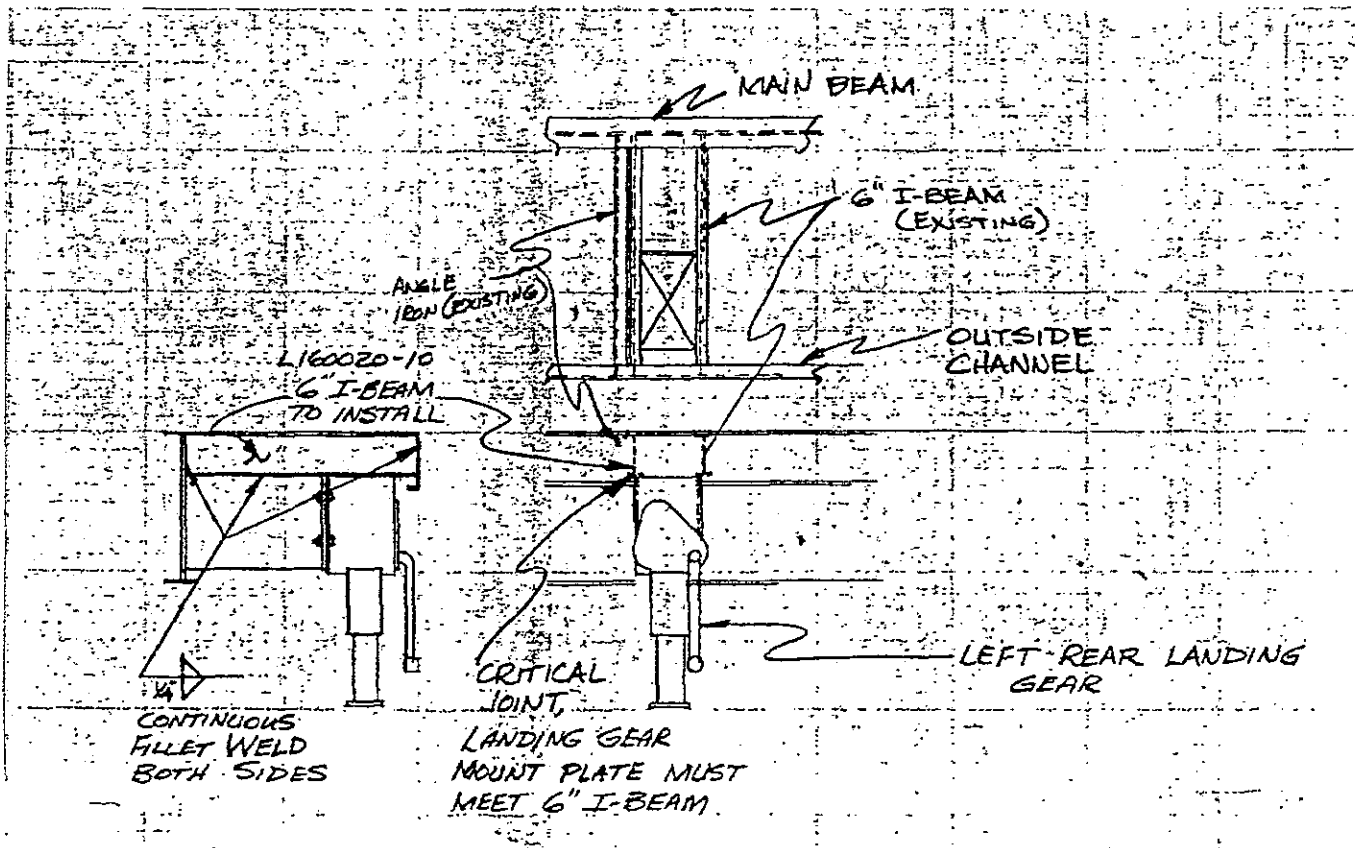
SERVICE BULLETIN 89-4

SUPER LOOPS

It has been brought to our attention that the landing gear on the left rear of the trailer may lack proper support. This situation should be investigated immediately. It involves Serial Numbers 44 through 50 trailers only.

SEE SKETCH BELOW. The landing gear should be tied into two (2) 6" I-beams. If the front I-beam is missing, there may be only an angle iron brace in its place, but will not be tied in to landing gear mount plate.

Please advise the manufacturer so that we can supply the ride operator with a 6" I-beam to repair the situation. If, upon inspection, there is no problem found, please let us know so it can be filed in our records.



Manufacturers of  
The Hi-Roller • Super Loops • Whirlwind • Paratower

**THE HI-ROLLER CO.**

(806) 293-5214  
FAX (806) 293-5215

P.O. Box 1968  
Plainview, TX 79073-1968