



HEINRICH MACK
GMBH & CO.
KARUSSELL- UND
FAHRZEUGBAU
PARKEINRICHTUNGEN

Heinrich Mack GmbH & Co. Postfach 247 D-79176 Waldkirch

02-05-16-spritzlappen_e.doc

Waldkirch, 02-05-21
Edmund Schneider/gü

Flume Ride / Splash guards

Please find below some information on our latest knowledge gained on the splash guards installed at the "Flume Ride".

When replacing the splash guard at the chute run-out, it is imperative to pay attention to not exceeding the maximum permissible length.

In any case, the splash guard must not protrude over the release switch; if so, it is dangerous for the boat to get stuck.

May we kindly ask you to include the pages attached into your Maintenance Manual and to inform your staff responsible for this matter accordingly.

Thanking you very much for your kind co-operation.

Please complete the enclosed form "Confirmation of Receipt of Documents" and return it to the above-mentioned facsimile number or e-mail address at your earliest convenience.

Yours sincerely

HEINRICH MACK GmbH & Co

pp

EDMUND SCHNEIDER
- Head of Spare Parts/Consulting -

Enclosures:

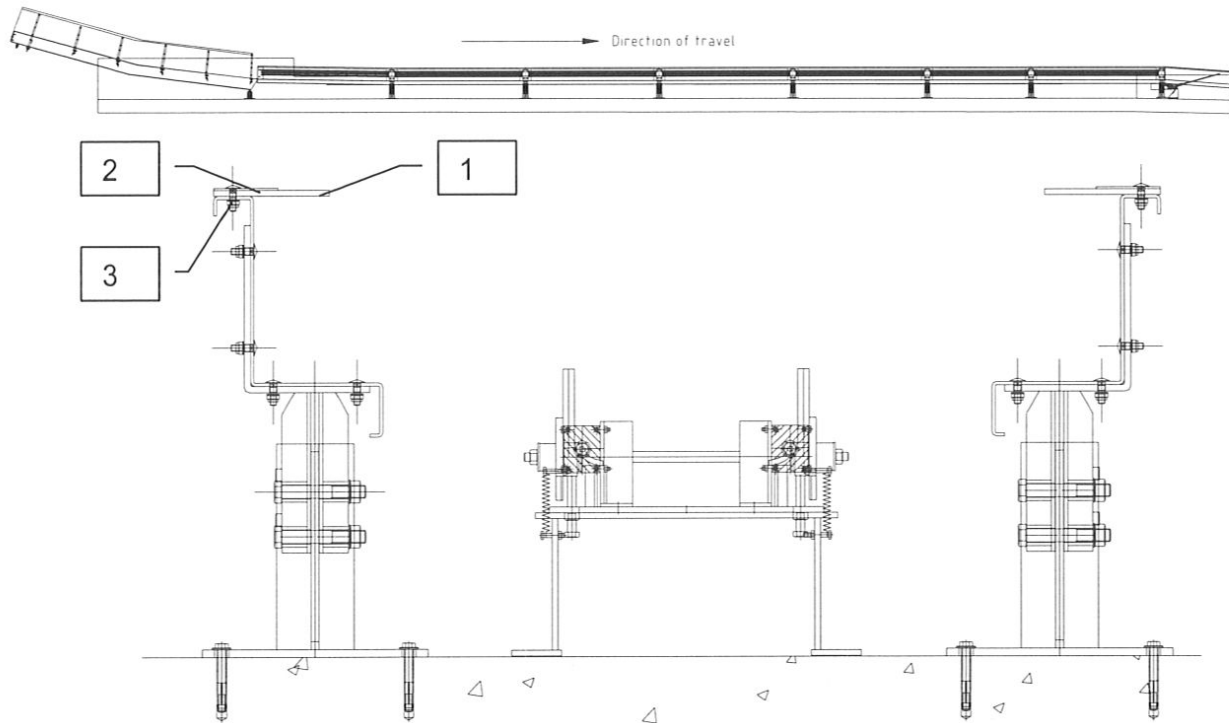
two pages concerning „splash guards“
form „Confirmation of receipt of documents“

Splash guards



Always observe safety procedures

Typical arrangement of run outs:



Disassembly:

- Loosen and remove the bolts(3).
- Remove the worn splash guard(1) with the brackets(2).
- Clean all parts



**The splash guards must end at the run out switch(See drawing).
Otherwise the boats could get stuck in the channel**

Worn splash guards are to be replaced by splash guards of same dimensions

Assembly:

- Cut the splash guard(1) to the same length than the worn splash guard(1).
- Drill the holes into the new splash guard(1) according to the worn splash guard.
- Mount the new splash guard with the brackets (2) and the bolts(3).

