

Majestic Manufacturing, Inc.

Majestic Manufacturing, Inc. * PO Box 128
4536 State Route 7, New Waterford, Ohio 44445

Subject: Post to Top Insulator Conversion

ATTN: OWNER/OPERATOR

This bulletin pertains to the operation of your Majestic unit. This Service Bulletin must remain with the owner's manual at all times. If you have any questions regarding the Bulletin, contact our office at 330/457-2447, M-F 8:00a.m. -4:30p.m. E.S.T. ** Fax 330/457-7490.

SERVICE BULLETIN

Date: May 1, 1991

S.B. Number: 91-5

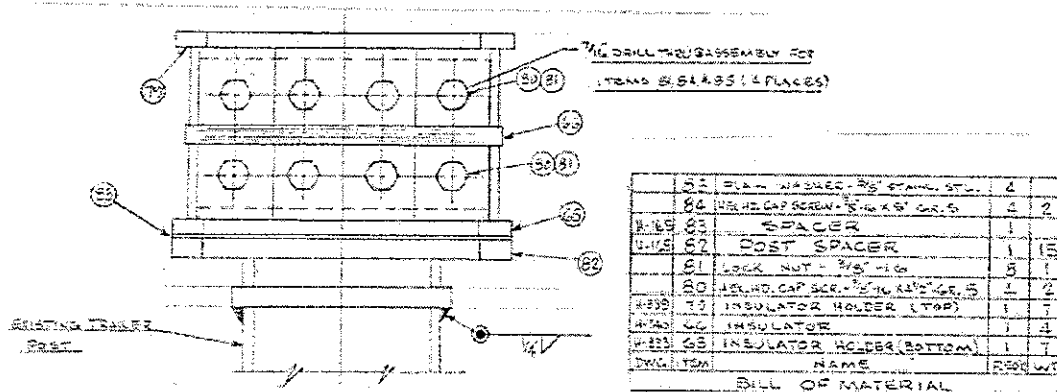
Notice:

Majestic Manufacturing Scooter Buildings, TM-1400 & TM-1800 built prior to serial no. 2121 utilizes a wood insulator design to insulate the trailer and the top assemblies. This design may be converted in the field by ordering necessary conversion parts shown in view below which uses a durable plastic type insulating material in place of the piece of wood.

These parts are readily available and may be ordered directly from our service and parts department.

When ordering, give the model of the Scooter Building, serial no. and year of manufacturing.

If you have any questions on factory standards or procedures on our equipment, contact Majestic Manufacturing, Inc. during normal business hours of 8:00 a.m. to 4:30 p.m. Monday through Friday, E.S.T. at 330/457-2447 or toll free at 1-888-MAJ-RIDE.



Revised 01/06/03