

Majestic

Majestic Manufacturing, Inc. • P.O. Box 128
4536 State Route 7 • New Waterford, Ohio 44445

SUBJECT: RAISING AND LOWERING MAJESTIC SCOOTER BUILDINGS
TM-1400 TM-1800 TM-1800 EURO TM-2700

ATTN: OWNER/OPERATOR,

This Bulletin pertains to operation of your Majestic unit. This Service Bulletin *must* remain with owner's manual. If you have any questions regarding this Bulletin, contact our office at (330) 457-2447, M-F 8:00 a.m.-4:30 p.m. E.S.T. • Fax 457-7490

SERVICE BULLETIN

Date: February 13, 1991

S.B. Number: 91-1

Notice:

Majestic Manufacturing, Inc., indicates in owners manual about safe guards and hazards of raising and lowering Majestic scooter decks. In addition, Majestic will be issuing operational placards along with instructions and hardware to be placed on each and every Majestic scooter. This placard is designed to inform owner/operator of the correct and safe operation in erection and dismantling of the scooter.

This service bulletin must remain with owner's manual at all times.

If you have any questions on factory standards or procedures on our equipment contact Majestic Manufacturing, Inc. during business hours 8:00am to 4:30pm Monday through Friday Eastern Standard Time at 330-457-2447.

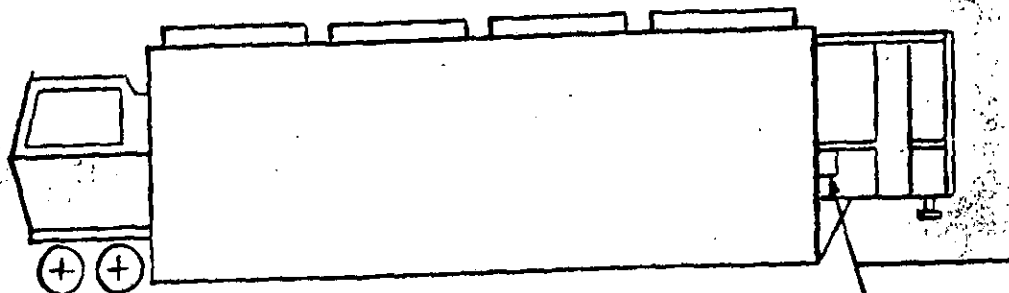
Dedicated to Safety In the Amusement Industry

CAUTION

ON LOWERING DECKS

INSTRUCTIONS

1. TRAILER MUST BE FIRMLY BLOCKED.
2. HOIST SYSTEM MUST BE TO FACTORY STANDARDS.
3. OPERATOR MUST BE FAMILIAR WITH OWNERS MANUAL ON OPERATION.
4. DO NOT STAND BETWEEN OR UNDER DECKS WHEN EITHER LOWERING OR RAISING.



LOCATION OF
WARNING LABEL.

TM-2700

EXAMPLE OF LOCATION

NOTE: Warning label must be located on unit in such a way as to be visible to any person prior to lowering or raising decks.

Majestic Manufacturing, Inc. 4536 Rt 7 New Waterford, Ohio 44445
Phone 330-457-2447 330-457-7280 Fax 330-457-7490

Majestic

Majestic Manufacturing, Inc. • P.O. Box 128
4536 State Route 7 • New Waterford, Ohio 44445

**SUBJECT: FOLDING GOOSENECK
MAJESTIC SCOOTER BUILDINGS TM-1400 AND TM-1800**

ATTN: OWNER/OPERATOR,

This Bulletin pertains to operation of your Majestic unit. This Service Bulletin *must* remain with owner's manual. If you have any questions regarding this Bulletin, contact our office at (330) 457-2447, M-F 8:00 a.m.-4:30 p.m. E.S.T. • Fax 457-7490

SERVICE BULLETIN

Date: February 13, 1991

S.B. Number: 91-2

Notice:

Majestic Manufacturing, Inc., indicates in owner's manual about the safeguards and hazards of raising and lowering the hydraulic gooseneck. In addition, Majestic will be issuing operational placards along with the instructions and hardware to be placed on each and every Majestic scooter equipped with this hydraulic feature. Majestic also states any modification to factory design relieves any responsibility of Majestic. You may order these placards from Majestic. They are being offered free of charge if ordered within 90 days of this bulletin. After 90 days the charge will be \$4.00 each. You are required to have two (2) placards for each scooter building.

This service bulletin must remain with owner's manual at all times.

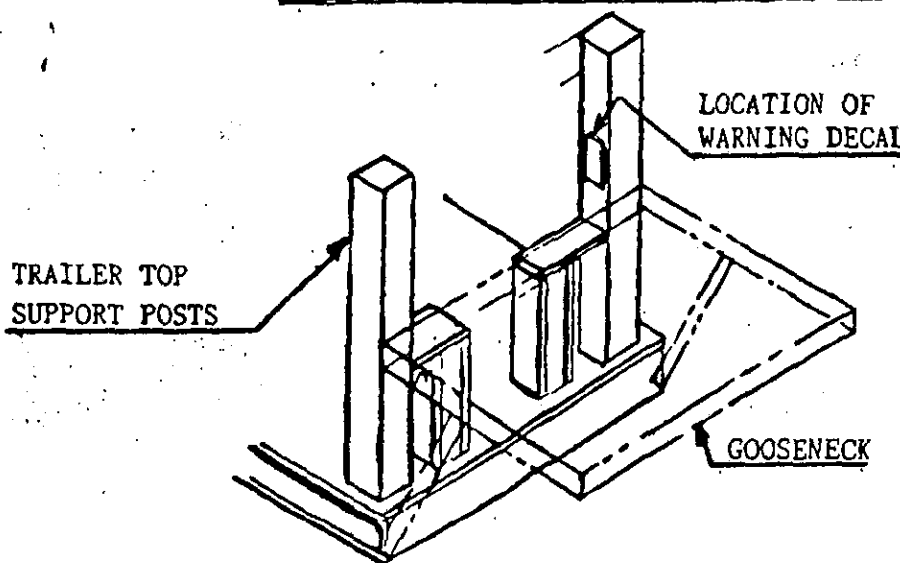
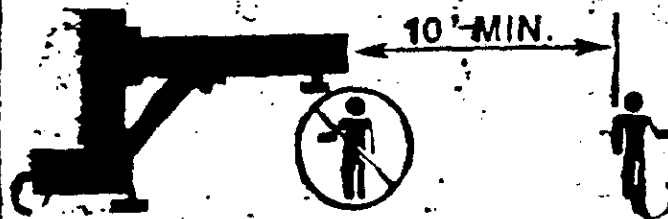
If you have any questions on factory standards or procedures on our equipment contact Majestic Manufacturing, Inc. during business hours 8:00am to 4:30pm Monday through Friday Eastern Standard Time at 330-457-2447.

CAUTION

ON RAISING or LOWERING HYD. GOOSENECK

INSTRUCTIONS

1. REMAIN 10' AWAY FROM FRONT OF GOOSENECK WHILE RAISING OR LOWERING.
2. NEVER REMAIN UNDER GOOSENECK WHILE RAISING OR LOWERING.
3. MAINTAIN GOOSENECK TO FACTORY STANDARDS.



NOTE: Warning label must be located on unit in such a way as to be visible to any person prior to lowering or raising gooseneck.

Majestic Manufacturing, Inc. 4536 Rt 7 New Waterford, Ohio 44445
Phone 330-457-2447 330-457-7280 Fax 330-457-7490

Majestic

Majestic Manufacturing, Inc. • P.O. Box 128
4536 State Route 7 • New Waterford, Ohio 44445

**SUBJECT: STABILIZER ASSEMBLY ON ALL TM1400 AND TM1800
SCOOTER BUILDINGS**

ATTN: OWNER/OPERATOR,

This Bulletin pertains to operation of your Majestic unit. This Service Bulletin *must* remain with owner's manual. If you have any questions regarding this Bulletin, contact our office at (330) 457-2447, M-F 8:00 a.m.-4:30 p.m. E.S.T. • Fax 457-7490

SERVICE BULLETIN

Date: May 1, 1991

S.B. Number: 91-4

Notice:

This service bulletin is being issued to all owners/operators of the TM1400 and TM1800 scooter buildings to inform them of the importance of the stabilizer assembly installed on this model scooter building.

This stabilizer assembly is installed to the gooseneck assembly (porch) at our factory for the safe raising and lowering of this assembly and must be ATTACHED at all times and periodically inspected for any weld or parts failures.

Any failures in this assembly must be corrected before any further operation of the gooseneck assembly. Failure to comply with this bulletin may result in serious injury to personnel involved with this ride and Majestic can not be held responsible for those injuries.

Inspect for cracks or failures annually.

Inspect these two weld areas for any cracks or weld failures quarterly or after every third operation of gooseneck; whichever ever may come first. Inspect and replace spring if broken and coat with grease annually.

Supplement to this bulletin will be issued advising you of Majestic Mfg., recommendation for adding a safety feature to your ride, in the field, if you so desire.

This service bulletin must remain with owner's manual at all times. If you have any questions on factory standards or procedures on our equipment contact Majestic Manufacturing, Inc. during business hours 8:00am to 4:30pm Monday through Friday Eastern Standard Time at 330-457-2447.

Majestic

Majestic Manufacturing, Inc. • P.O. Box 128
4536 State Route 7 • New Waterford, Ohio 44445

SUBJECT: POST TO TOP INSULATOR CONVERSION

ATTN: OWNER/OPERATOR,

This Bulletin pertains to operation of your Majestic unit. This Service Bulletin *must* remain with owner's manual. If you have any questions regarding this Bulletin, contact our office at (330) 457-2447, M-F 8:00 a.m.-4:30 p.m. E.S.T. • Fax 457-7490

SERVICE BULLETIN

Date: May 1, 1991

S.B. Number: 91-5

Notice:

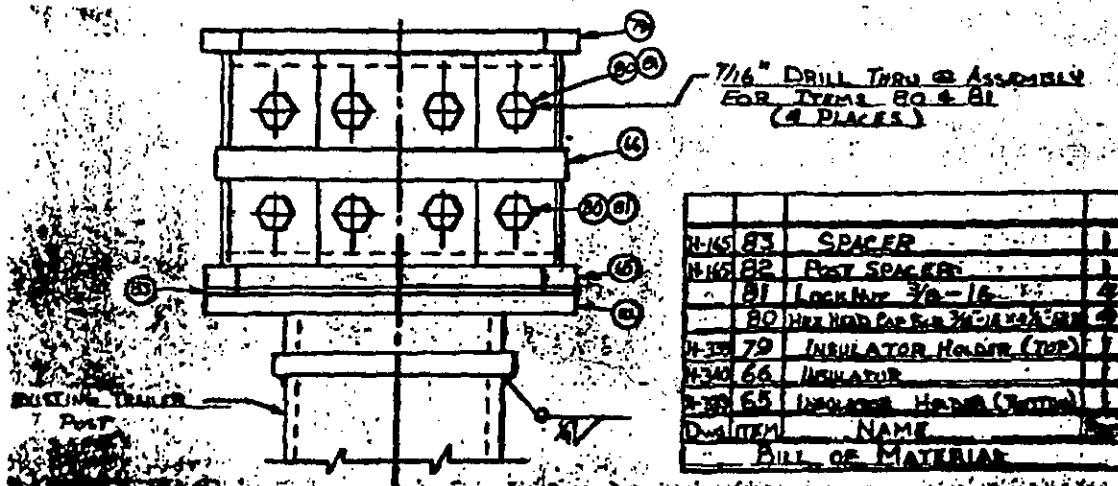
Majestic scooter buildings, TM1400 and TM1800 built prior to serial no. 2121 utilizes a wood insulator design to insulate the trailer and top assemblies. This design may be converted in the field by ordering necessary conversion parts shown in view below which uses a durable plastic type insulating material in place of wood.

These parts are readily available and may be ordered directly from our service and parts department.

When ordering, give model of building, serial no. and year manufactured.

This service bulletin must remain with owner's manual at all times.

If you have any questions on factory standards or procedures on our equipment contact Majestic Manufacturing, Inc. during business hours 8:00am to 4:30pm Monday through Friday Eastern Standard Time at 330-457-2447.



Dedicated to Safety in the Amusement Industry

Majestic

Majestic Manufacturing, Inc. • P.O. Box 128
4536 State Route 7 • New Waterford, Ohio 44445

SUBJECT: RAISING AND LOWERING DECK SAFETY

ATTN: OWNER/OPERATOR,

This Bulletin pertains to operation of your Majestic unit. This Service Bulletin *must* remain with owner's manual. If you have any questions regarding this Bulletin, contact our office at (330) 457-2447, M-F 8:00 a.m.-4:30 p.m. E.S.T. • Fax 457-7490

SERVICE BULLETIN

Date: May 1, 1991

S.B. Number: SB 91-1 Supplement to service bulletin 91-1

Notice:

91-1 and the safety decal referred to emphasizes the importance of maintaining the hoist system to "FACTORY STANDARDS". This supplemental letter is being supplied to all of our customers explaining what the phrase "FACTORY STANDARDS" means.

DECK OPERATING CABLES:

1. Inspect hoist cables for:
 - A. Rust appearing to come from interior of cable
 - B. Evidence of previous corrosion from pitted condition of wires
2. Severe stretching occurring in a short section of a cable indicated by a reduced diameter in the cable.
3. Severe damage such as "kinking", broken strands or "bird caging".
4. Any strand or strands 75% broken.
5. If cables are found damaged and must be replaced, both cables must be replaced at the same time.

12 VOLT BATTERY:

1. Must be at "FULL CHARGE" at all times to insure proper operation of 12 volt winch motor.

This service bulletin must remain with owner's manual at all times.

If you have any questions on factory standards or procedures on our equipment contact Majestic Manufacturing, Inc. during business hours 8:00am to 4:30pm Monday through Friday Eastern Standard Time at 330-457-2447.

Majestic

Majestic Manufacturing, Inc. • P.O. Box 128
4536 State Route 7 • New Waterford, Ohio 44445

SUBJECT: RAISING AND LOWERING HYDRAULIC GOOSENECK SAFETY

ATTN: OWNER/OPERATOR,

This Bulletin pertains to operation of your Majestic unit. This Service Bulletin *must* remain with owner's manual. If you have any questions regarding this Bulletin, contact our office at (330) 457-2447, M-F 8:00 a.m.-4:30 p.m. E.S.T. • Fax 457-7490

SERVICE BULLETIN

Date: May 1, 1991

S.B. Number: SB91-2 Supplement to service bulletin 91-2

Notice:

91-2 and the safety decal referred to emphasizes the importance of maintaining the gooseneck assembly to factory standards. This supplement letter is being supplied to all of our customers explaining what the phrase "FACTORY STANDARDS" means.

1. Inspect shock absorbers to see that they are in good condition and installed correctly.
2. King pin is free of weld cracks or abnormal wear.
3. Pivot arms must be free of weld cracks and end caps must be in place.
4. Pivot brackets must be free of weld cracks.
5. Folding support plate must be free of weld cracks and any excessive wear of pipe ends.
6. Safety lock bar must be installed and in good condition.
7. Drive pins must be installed and in good condition.
8. Drive pin locks are to be free of weld cracks and in good condition.
9. Mechanical stabilizer must be in place at all times and in good condition.

NOTE: SERVICE BULLETINS 91-2 AND 91-4 MUST BE COMPLIED WITH FOR SAFE GOOSENECK OPERATION.

This service bulletin must remain with owner's manual at all times.

If you have any questions on factory standards or procedures on our equipment contact Majestic Manufacturing, Inc. during business hours 8:00am to 4:30pm Monday through Friday Eastern Standard Time at 330-457-2447.

Dedicated to Safety In the Amusement Industry

Majestic

Majestic Manufacturing, Inc. • P.O. Box 128
4536 State Route 7 • New Waterford, Ohio 44445

SUBJECT: STABILIZER ASSEMBLY

ATTN: OWNER/OPERATOR,

This Bulletin pertains to operation of your Majestic unit. This Service Bulletin *must* remain with owner's manual. If you have any questions regarding this Bulletin, contact our office at (330) 457-2447, M-F 8:00 a.m.-4:30 p.m. E.S.T. • Fax 457-7490

SERVICE BULLETIN

Date: May 22, 1991

S.B. Number: SB91-4 Supplement to service bulletin 91-4

Notice:

91-4 refers to a recommended safety feature that may be added to the stabilizer assembly in the field if so desired. The following is a suggested way of adding that safety feature.

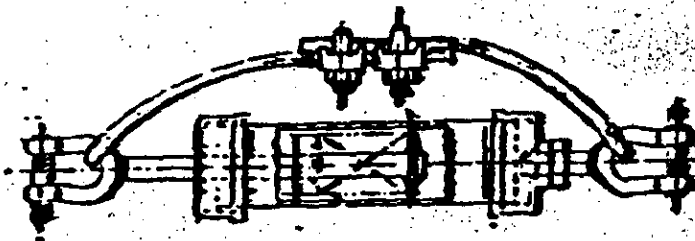


FIGURE 1

Extend stabilizer to maximum travel and fasten cable as shown in Figure 1. We recommend a 5/16" diameter, 7 x 19 strand core galvanized aircraft cable with a 9800# test strength or better.

This service bulletin must remain with owner's manual at all times.

If you have any questions on factory standards or procedures on our equipment contact Majestic Manufacturing, Inc. during business hours 8:00am to 4:30pm Monday through Friday Eastern Standard Time at 330-457-2447.

Majestic

Majestic Manufacturing, Inc. • P.O. Box 128
4536 State Route 7 • New Waterford, Ohio 44445

**SUBJECT: MODIFICATION ON TRAILER FRAME GOOSENECK
ALL TM1400 AND TM1800 UNITS**

ATTN: OWNER/OPERATOR,

This Bulletin pertains to operation of your Majestic unit. This Service Bulletin **must** remain with owner's manual. If you have any questions regarding this Bulletin, contact our office at (330) 457-2447, M-F 8:00 a.m.-4:30 p.m. E.S.T. • Fax 457-7490

SERVICE BULLETIN

Date: June 21, 1994

S.B. Number: 94-2 Sheet 1 of 2

Notice:

This service bulletin is being issued to inform all owners of Majestic scooter rides with serial numbers below 2147 of a modification to your trailer frame gooseneck.

Call the factory for installation dimensions and instruction of 2 stiffener plates we are requesting you add to your ride gooseneck frame. These plates, part number H-107-AB are available at no charge if ordered within 90 days of the date on this bulletin.

All work must be performed by qualified personnel, capable of understanding the function of the parts and their proper installation.

This service bulletin must remain with owner's manual at all times.

If you have any questions on factory standards or procedures on our equipment contact Majestic Manufacturing, Inc. during business hours 8:00am to 4:30pm Monday through Friday Eastern Standard Time at 330-457-2447.

Majestic

Majestic Manufacturing, Inc. • P.O. Box 128
4536 State Route 7 • New Waterford, Ohio 44445

**SUBJECT: MODIFICATION ON TRAILER FRAME GOOSENECK
ALL TM1400 AND TM1800 UNITS**

ATTN: OWNER/OPERATOR,

This Bulletin pertains to operation of your Majestic unit. This Service Bulletin *must* remain with owner's manual. If you have any questions regarding this Bulletin, contact our office at (330) 457-2447, M-F 8:00 a.m.-4:30 p.m. E.S.T. • Fax 457-7490

SERVICE BULLETIN

Date: June 21, 1994

S.B. Number: 94-2 Sheet 2 of 2

Notes:

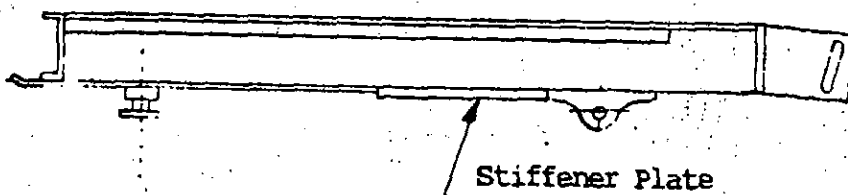
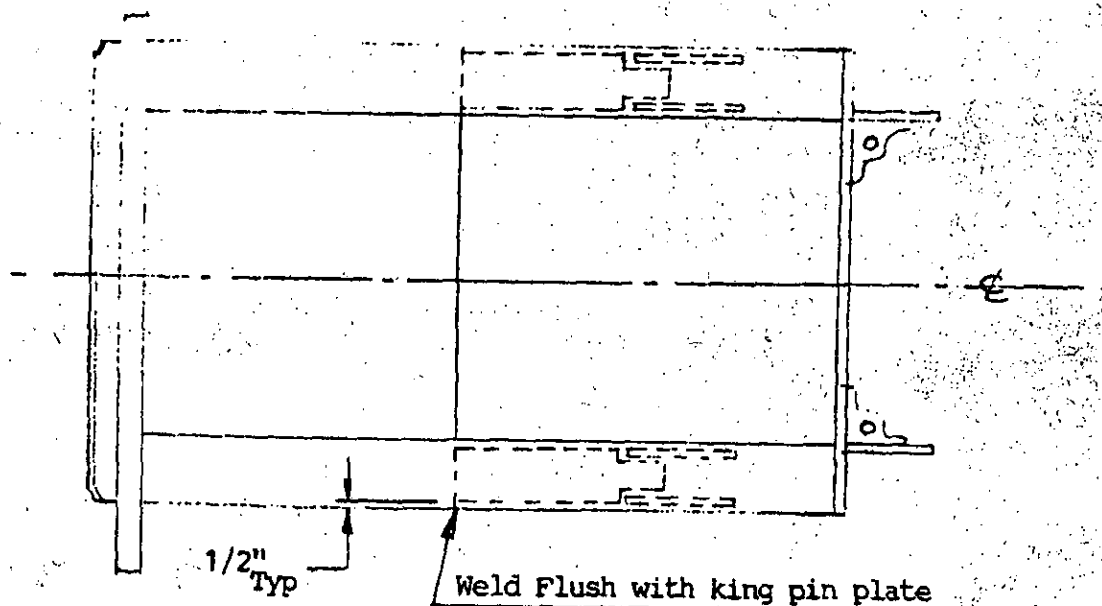


Fig. 1

Dedicated to Safety In the Amusement Industry

INSPECTION ONLY

This Inspection Manual is to serve as a guide to help state inspectors in their examination of equipment manufactured by Majestic Manufacturing Inc. The following Majestic Scooters® are included in this manual:

TM-900, TM-1280, TM-1400, TM-1800 Standard, TM-1800 Euro,
TM-2000, TM-2100, TM-2400 and TM-2700.

Regarding the visual examination of Majestic Scooters®, it is recommended that the individual performing the inspection be a competent, qualified mechanic capable of understanding:

- a.) The function of Majestic Scooter® parts
- b.) The proper installation of the ride
- c.) An understanding of the provided service manual

He / She must also have knowledge in:

- a.) Structural steel and aluminum weldments.
- b.) Electrical AC and D.C. currents with a general knowledge of
The equipment through the study of this manual and direct contact
with the factory.

NOTE: Persons not familiar with any of these rides should contact the factory for assistance.

Home

Table of Contents

Table of Contents (CD-Rom)

List of Figure and Drawings

<u>DWG No.</u>	<u>Description</u>	<u>Page No.</u>
M-2187	Trailer Inspection	6
M-2257	Trailer Inspection (TM-2000 & TM-2400)	7
Q-101	Blocking Points TM-1800 Standard	9
Q-201	Blocking Points TM-1400	10
Q-303	Blocking Points TM-2700	11
Q-601	Blocking Points TM-1800 Euro	12
Q-1506	Blocking Points TM-900	13
Q-1606	Blocking Points TM-2100	14
Q-1901	Blocking Points TM-1280	15
Q-2209	Blocking Points TM-2400	16
Q-2305	Blocking Points TM-2000	17
M-2190	Deck Inspection	19
M-2186	Ramp Inspection	21
M-2194	Bumper Car Inspection	23
M-2193	Fence Inspection	25
M-2195	Standard 3" Post-Inspection	27
M-2197	Post Inspection (TM-1800E, TM-2100 & TM-2700)	28
M-2253	Post Inspection (TM-2000 & TM-2400)	29
M-2188	Rafter Inspection	31
M-2260	Rafter Inspection (TM-2000 & TM-2400)	32
M-2191	Rafter Inspection (TM-2700)	33
M-2192	Catwalk Inspection (TM-2700)	35
M-2256	Catwalk Inspection (TM-2000 & TM-2400)	36
M-2262	Catwalk Inspection - All Rides	37
M-2189	Screen Inspection	39
M-2196	Scenery Panel Inspection	41
M-2255	Swing Out Scenery Inspection (TM-2000 & TM-2400)	42

Table of Contents

	<u>Page</u>
<u>Title Page</u>	1
<u>List of Figures and Drawings</u>	2
<u>Table of Contents</u>	3
<u>Section 1: Electrical</u>	4
<u>Section 2: Trailer</u>	5
<u>Section 3: Blocking of Unit</u>	8
<u>Section 4: Purlins, Ramps and Deck</u>	18
<u>Section 5: Bumper Cars</u>	22
<u>Section 6: Fence</u>	24
<u>Section 7: Post</u>	26
<u>Section 8: Rafters and Catwalks</u>	30
<u>Section 9: Screens</u>	38
<u>Section 10: Scenery</u>	40
<u>Section 11: Canvas</u>	40

SECTION 1

ELECTRICAL

ELECTRICAL WIRING AND ELECTRICAL COMPONENTS

- A. Recommended visual inspection of all electrical panels, covers, fixtures, plugs and electrical cables.
- B. Proper isolation is obtained between the floor and ceiling.

AREAS OF PARTICULAR IMPORTANCE

- 1. Connected to the proper voltage requirement.
- 2. Keep all electrical covers in place and all safety devices operating properly.
- 3. Proper grounding.
- 4. Meter inspection, done by authorized personnel, to insure the proper isolation between the floor and the ceiling.
- 5. Scenery should be detached from posts. No objects should be hanging from the top of the ride, the scenery or the rafters.
- 6. Sufficient electrical voltage is supplied to operate the scooter.
- 7. Check for exposed or bare wires, loose fixtures, and broken covers. Make sure wires are not exposed on plugs and that plugs are not hot or melted.

SECTION 2

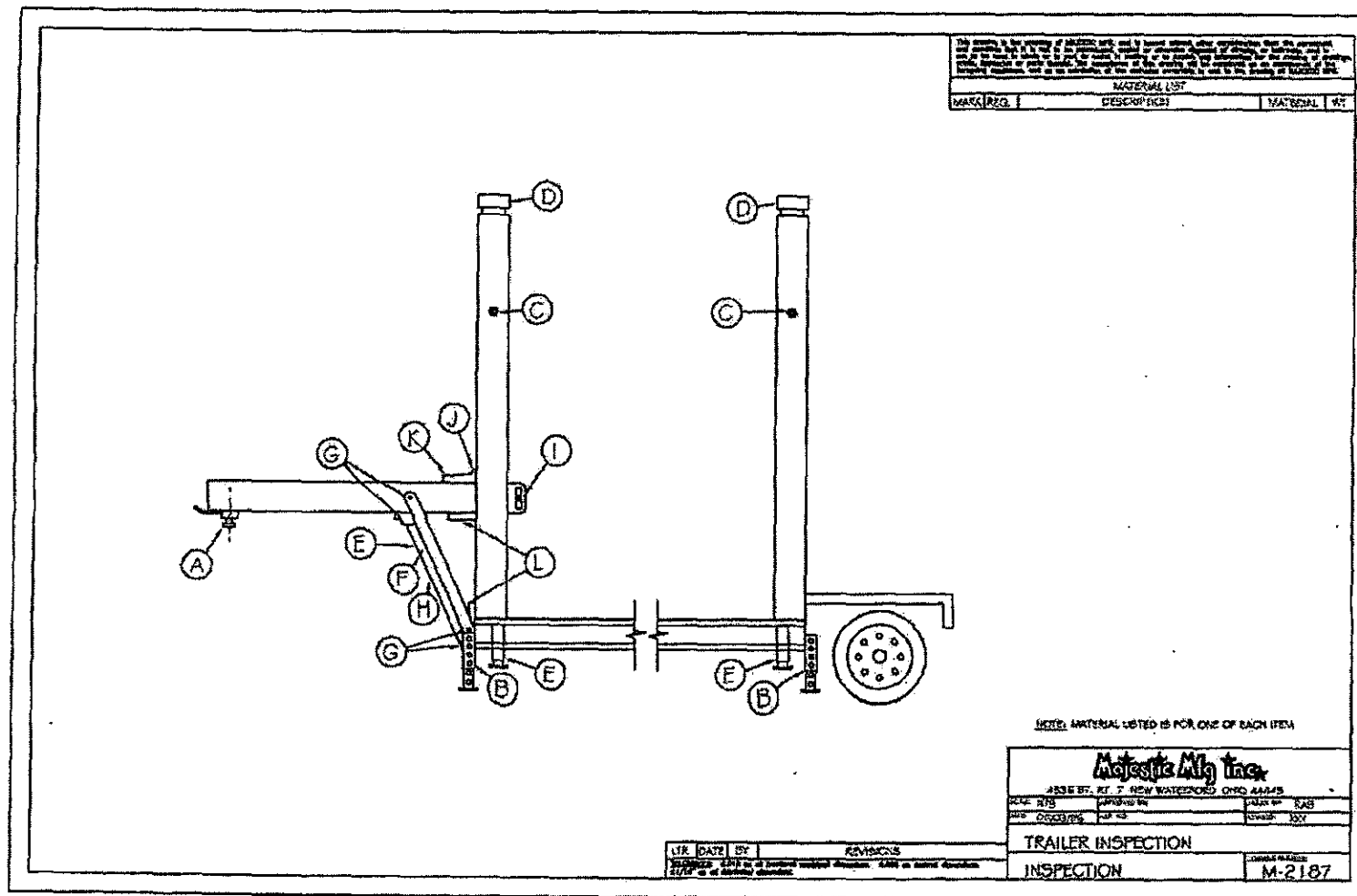
TRAILER MOUNTED SCOOTER TRAILER

(Ref. DWG. M-2187 & M-2257, page 6-7)

<u>INSPECTION LOCATION</u>	<u>INSPECT FOR</u>	
A. Gooseneck King Pin	Secure mounting, inspect for broken welds	Visual
B. Mechanical Jacks	Worn holes for adjustable pin, broken welds or worn threads	Visual
C. 1" and 1 1/4" Post Nuts	Broken welds, worn threads	Visual
D. Main Post Insulators	1. Sufficient clearance between steel post and aluminum cap. 2. Insulators are secure in posts.	Visual
E. Hydraulic Cylinders	Worn cylinder rods and leakage, worn hydraulic lines	Visual
*F. Gooseneck Pivot Arms	Free from broken welds, end caps in place	Visual
*G. Gooseneck Pivot Point	Broken welds, excessive wear	Visual
*H. Gooseneck Folding Plate	Broken welds, excessive wear on pipe ends	Visual
*I. Safety Bar	Functional and with the ride	Visual
*J. Drive Pins	Functional and with the ride	Visual
*K. Weldment for Drive Pins	Broken welds, excessive wear on holes	Visual
*L. Gooseneck Stabilizer	Broken welds on attachment pins, stabilizer is functional	Visual

NOTE: Items with * are relevant to the TM-1400 & TM-1800 Standard Scooters Only.

Revised 01/06/03



This assembly is the property of MATESTIC, Inc. and is loaned to you for your use only. It is to be used for the purpose of inspecting and maintaining your equipment. It is not to be used for any other purpose. It is to be returned to MATESTIC, Inc. when you are finished with it. It is to be kept in good condition and not damaged. It is to be used in accordance with the instructions provided with it. It is to be used in accordance with the instructions provided with it. It is to be used in accordance with the instructions provided with it.

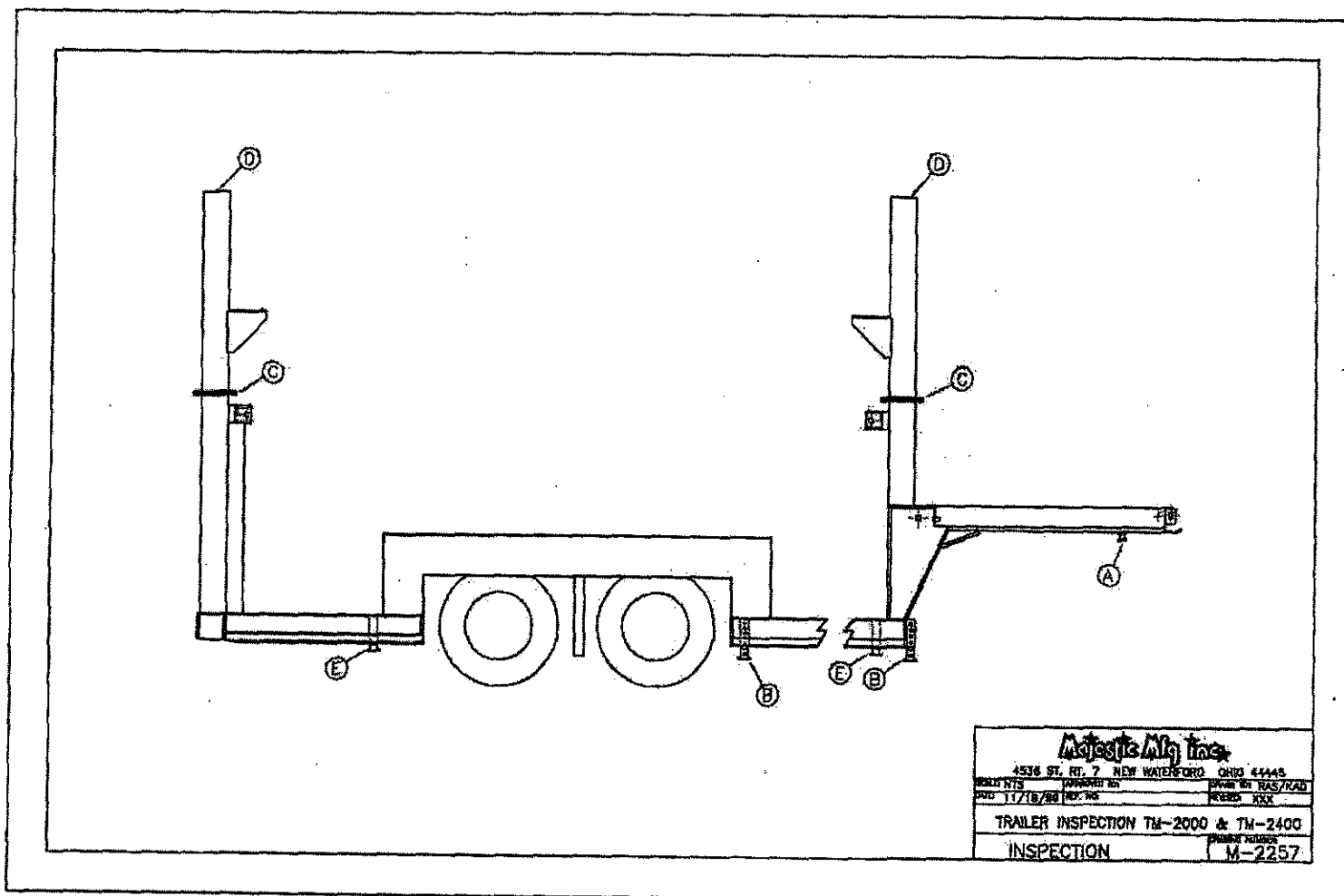
MATERIAL LIST		
MARKING	DESCRIPTION	MATERIAL WT

NOTE: MATERIAL LISTED IS FOR ONE OF EACH ITEM

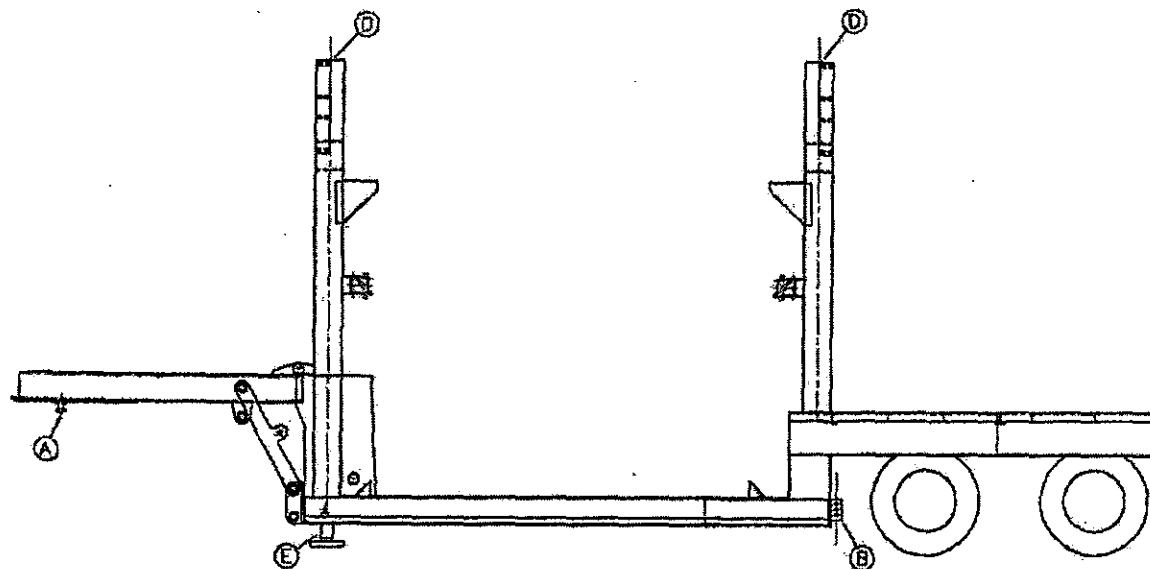
Matestic Mfg. Inc.		
435 E. ST. 7 NEW WATERFORD OHIO 44135		
DATE: 01/06/03	APPROVED BY: [Signature]	DATE: 01/06/03
TRAILER INSPECTION		
INSPECTION	M-2187	

USE DATE BY:	REVISIONS
1/06/03 - 1/06/03	

Revised 01/06/03



Revised 01/06/03



Majestic Mfg. Inc.		
4538 ST. RT. 7 NEW WATERFORD OHIO 44445		
WORK DATE	APPROVED BY	DRAWN BY
DATE: 11/19/99	REP. NO.	REVISION: 01/31/01
TRAILER INSPECTION TM-2000 & TM-2400		
INSPECTION		IM-2257-A

SECTION 3

BLOCKING (Ref. DWG's. - page 9-17)

Proper blocking of the ride is very important. Good blocking and stability is vital to a safe operation.

Listed below are:

A. Total quantity of blocking points per unit:

TM-900	Qty. 28
TM-1280	Qty. 46
TM-1400	Qty. 38
TM-1800 Standard	Qty. 48
TM-1800 Euro	Qty. 48
TM-2000	Qty. 62
TM-2100	Qty. 48
TM-2400	Qty. 62
TM-2700	Qty. 68

B. Total weight of each blocking point per unit:

TM-900	Ref Q-1506	Weight per point
TM-1280	Ref Q-1901	Weight per point
TM-1400	Ref Q-201	Weight per point
TM-1800 Standard	Ref Q-101	Weight per point
TM-1800 Euro	Ref Q-601	Weight per point
TM-2000	Ref Q-2305	Weight per point
TM-2100	Ref Q-1606	Weight per point
TM-2400	Ref Q-2209	Weight per point
TM-2700	Ref Q-303	Weight per point

C. Height restrictions for certain blocking techniques:

Majestic Manufacturing, Inc. recommends

1. Single blocking up to 6"
2. Crib blocking 6" and up.

NOTICE
THE DATA IN THIS DOCUMENT IS UNCLASSIFIED
PROPERTY RIGHT OF MAJESTIC MFG. CO.
ANY PARTY ACCEPTING THIS DOCUMENT SHALL
OWN CONFIDENCE AND ASSURE THAT IT
SHALL NOT BE DISCLOSED TO OTHERS WITHOUT
THE CONSENT OF MAJESTIC MFG. CO.

AXLE END

560° 560° 560° 560° 2150° 2150° 560° 560° 560° 560°

560° 560° 560° 560° 560° 560° 560° 560°

560° 560° 560° 560° 1250° 1250° 560° 560° 560° 560°

560° 560° 560° 560° 1250° 1250° 560° 560° 560° 560°

560° 560° 560° 560° 2150° 2150° 560° 560° 560° 560°

50'-10" 25'-5" 85'-10" 17'-11"

GOOSE NECK

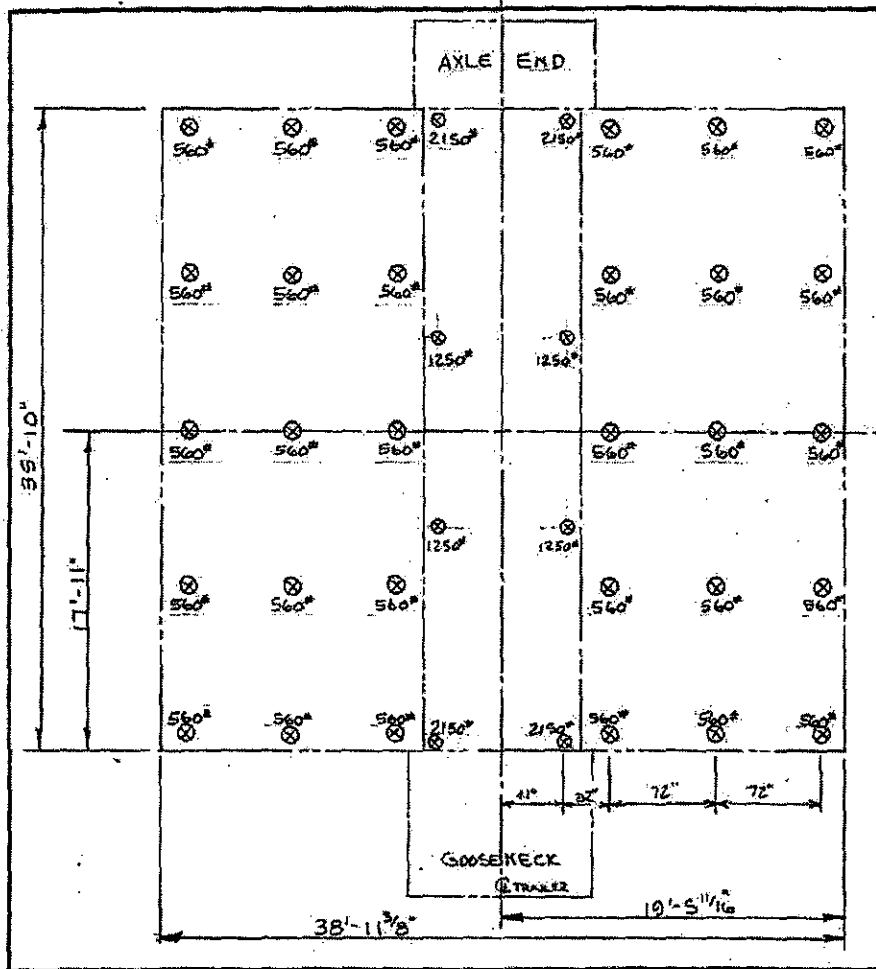
MAJESTIC MFG. INC.
4536 ST. RT. 7 NEW WATERFORD OHIO 44445

SCALE: 3/16" = 1'-0" APPROVED BY: DATE: 1-4-90 DESIGNED BY: GRB

BLOCKING POINT LOADS IN POUNDS.

TM-1500 9-101

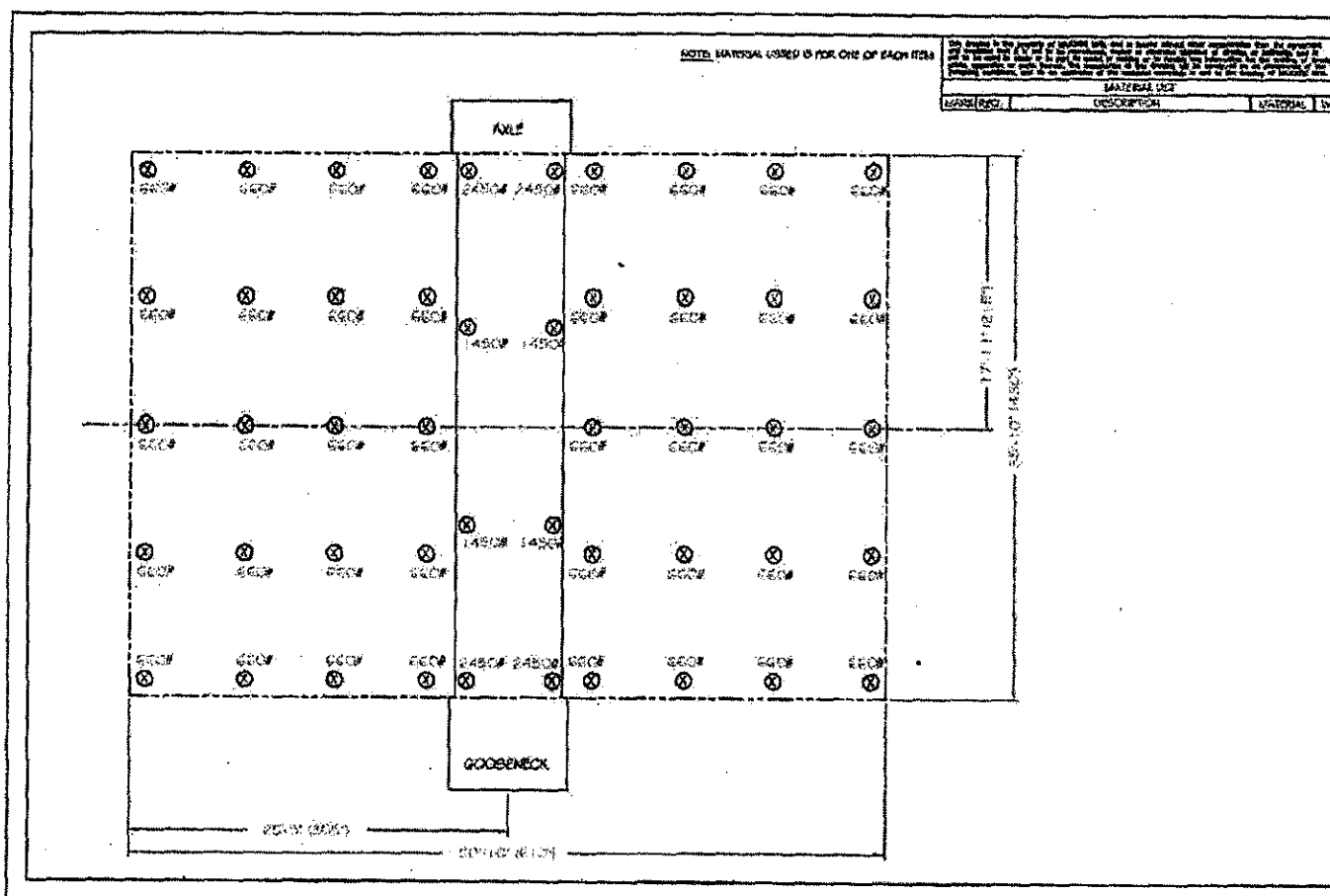
Revised 01/06/03



NOTICE
THE DATA IN THIS DOCUMENT INCORPORATES
PROPRIETARY RIGHT OF MAJESTIC MFG. INC.
ANY PARTY ACCEPTING THIS DOCUMENT DOES
SO IN CONFORMANCE AND AGREES THAT IT
SHALL NOT BE DUPLICATED OR REPRODUCED OR
ELSE BE LOANED TO OTHERS WITHOUT
THE CONSENT OF MAJESTIC MFG. INC.

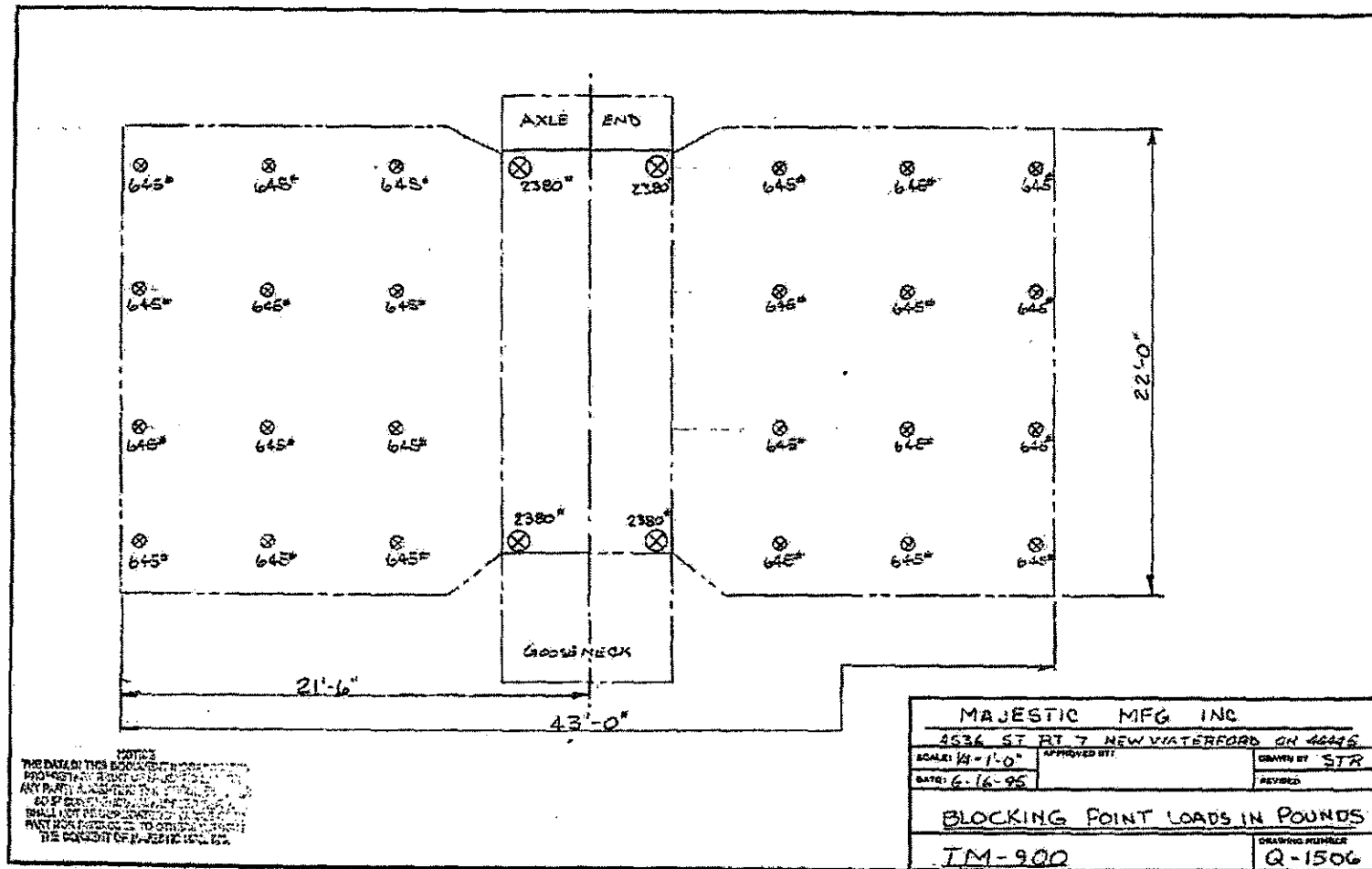
MAJESTIC MFG. INC.		
4536 ST RT 7 NEW WATERFORD OHIO 44445		
SCALE: 3/16" = 1'-0"	APPROVED BY:	DRAWN BY: GRB
DATE: 1-4-90		
BLOCKING POINT LOADS IN POUNDS		
TM-1400		DRAWING NUMBER Q-201

MATERIAL LIST				
NAME	QTY	DESCRIPTION	MATERIAL	UNIT

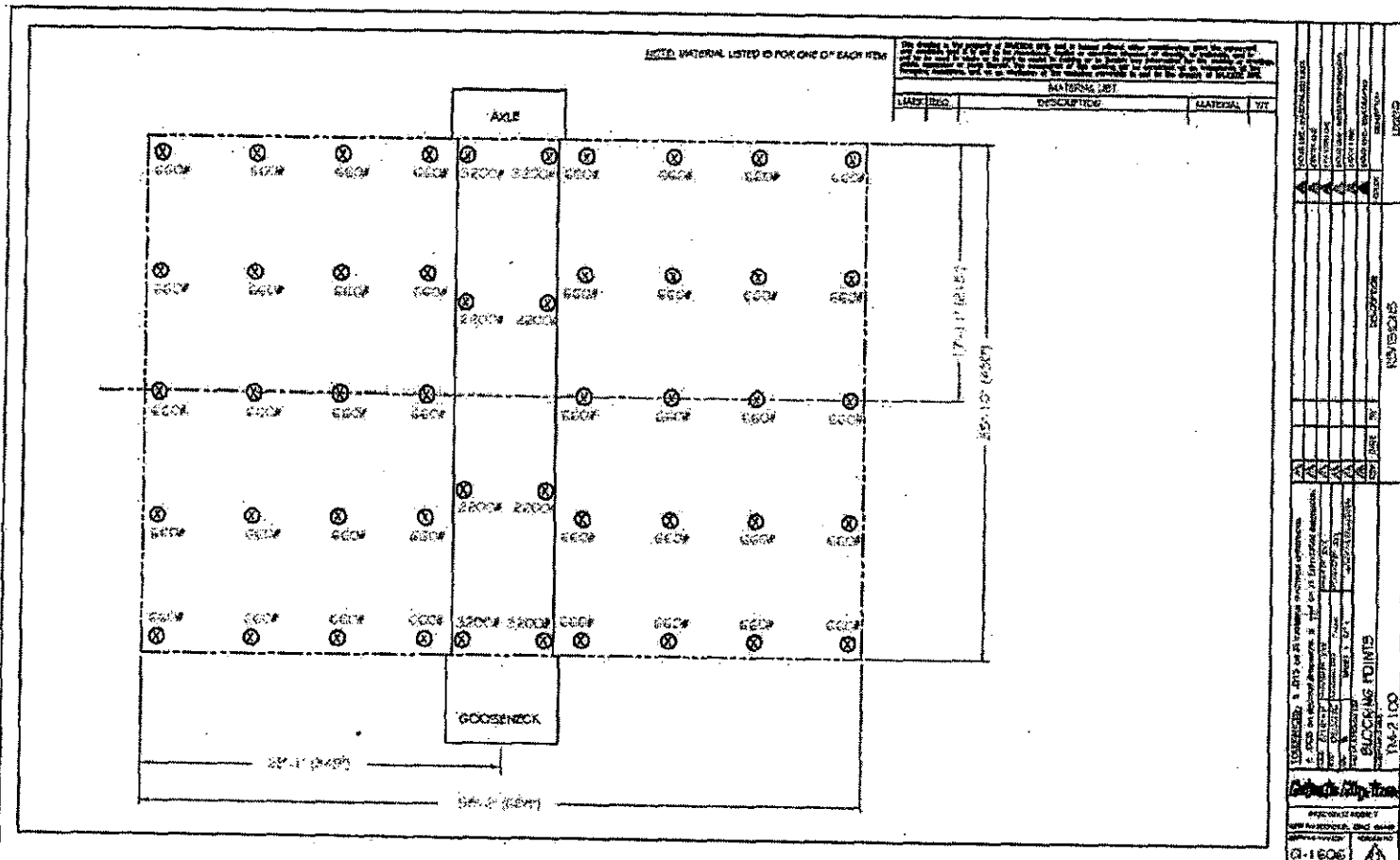
[illegible]

Revised 01/06/03

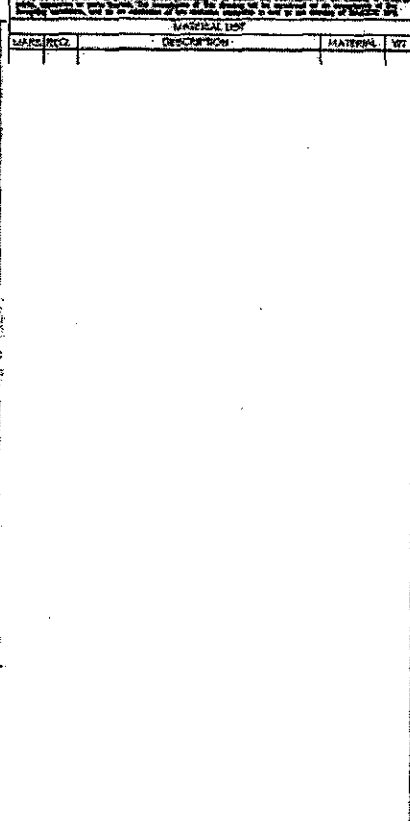
Revised 01/06/03



Revised 01/06/03



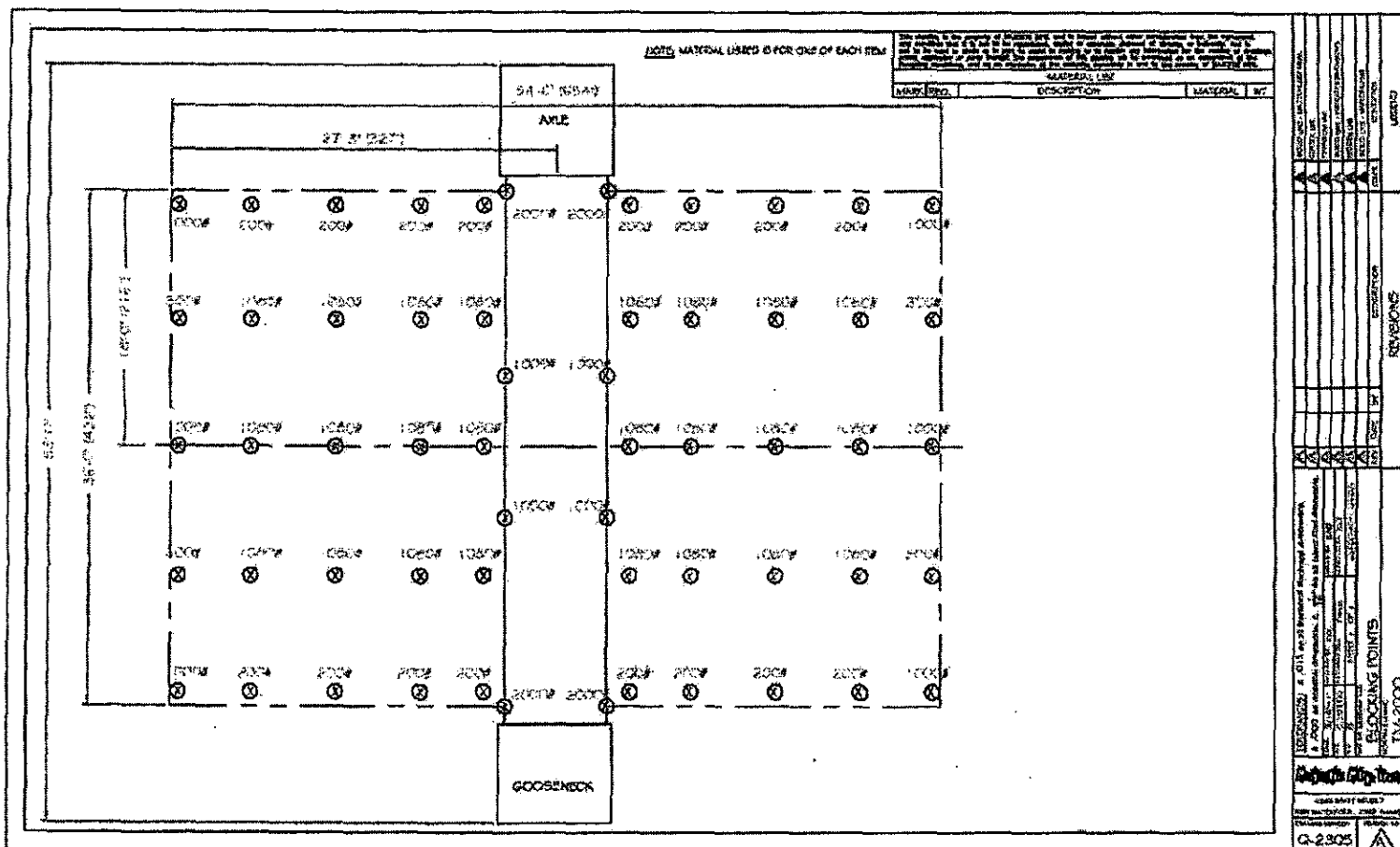
...the ...



10

Revised 01/06/03

Revised 01/06/03



SECTION 4

PURLINGS ** DECKS ** RAMPS

PURLINGS (Ref. DWG. M-2190, page 19)

<u>INSPECTION LOCATION</u>	<u>INSPECT FOR</u>	
A. Purlins	All purlins installed and secured to trailer.	Visual
B. Attachment to trailer (except TM-2700)	Excessive wear on holes and pins	Visual
C. Spreaders and spreader sockets	Check for cracked welds and excessive wear	Visual
J. Attachment to deck (applies to TM-2700 only)	Excessive dovetail wear and dovetail broken welds	Visual

DECKS (Ref. DWG. M-2190, page 19)

<u>INSPECTION LOCATION</u>	<u>INSPECT FOR</u>	
D. Deck hinges on trailer	Broken welds on 2" solid hinge point	Visual
*E. Deck hinges on deck	8" Piano hinge, loose or worn fasteners, broken hinge points	Visual
*F. Deck rollers	Functional and free rolling	Visual
G. Bumper Rail	Broken welds, missing bumper rail	Visual
H. Deck plates	Aligned properly and warping	Visual

NOTE: *E and *F apply to all Majestic Scooters except the TM-2700.

Recommend inspecting A through G BI-annually unless otherwise stated.

Revised 01/06/03

NOTE: J APPLIES TO THE TM-2700 ONLY.

NOTE: MATERIAL LISTED IS FOR ONE OF EACH ITEM

MATERIAL USED			
MARK	REQ.	DESCRIPTION	UNIT

NOTE: MATERIAL LISTED IS FOR ONE OF EACH ITEM

Majestic Mfg. Inc.

4500 ST. RT. 7, NEW WATERFORD ONTARIO L4A 4A4

NAME: NTS	ISSUED BY:	DATE: 02/03
DATE: 02/03	DATE: 02/03	DATE: 02/03

PURLIN & DECK INSPECTION-ALL RIDGES

INSPECTION	M-2190
------------	--------

DATE: 02/03 BY: [Signature]

REVISIONS:

1. [Description of revision]

2. [Description of revision]

3. [Description of revision]

SECTION 4 (cont)

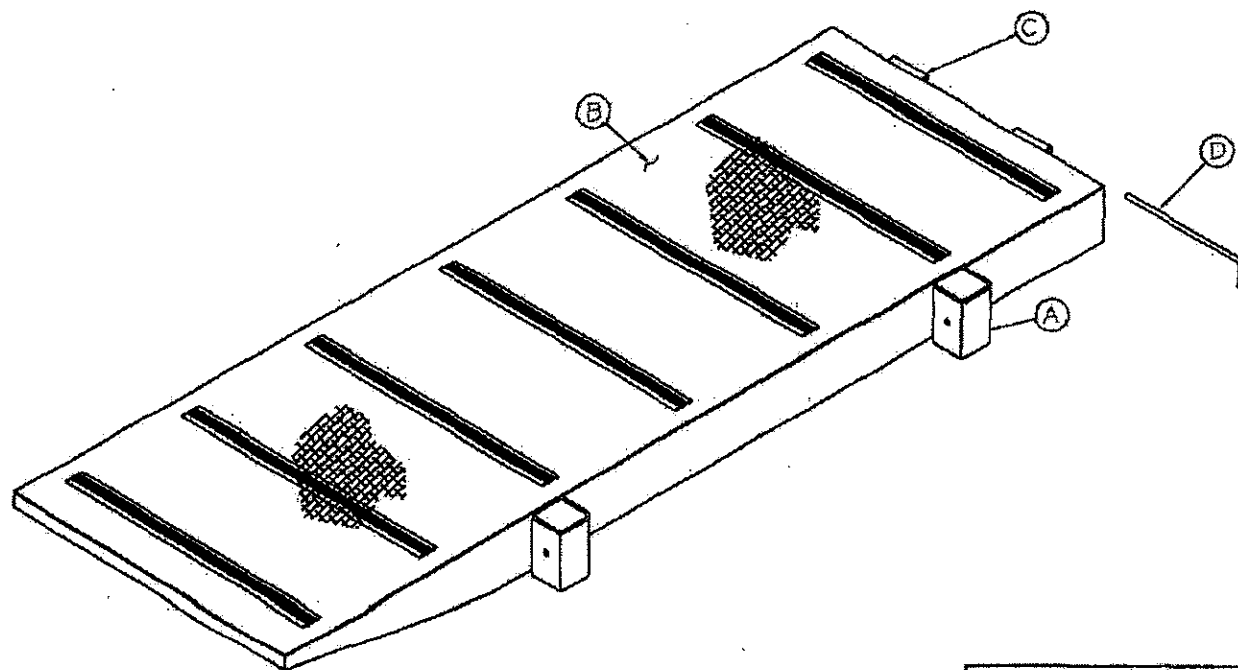
PURLING ** DECK ** RAMPS

RAMPS (Ref. DWG. M-2186, page 21)

<u>INSPECTION LOCATION</u>	<u>INSPECT FOR</u>	
A. Fence ramp sockets	Cracked or broken welds	Visual
B. Ramp surface	Anti-skid material worn or missing	Visual
C. Pipe hinges	Worn pipe, broken welds	Visual
D. Pin attachment	Broken, bent or missing	Visual
E. Stability of ramps	Proper placement of blocking	Visual

NOTE: Check A through E weekly.

Revised 01/06/03



Majestic Amusement			
4536 St. Rt. 7 New Waterford Ohio 45445			
DATE	BY	INSPECTED BY	DATE
05/04/03	NO. 43	NO. 43	NO. 43
RAMP INSPECTION-ALL RIDES			
INSPECTION			M-218G

SECTION 5

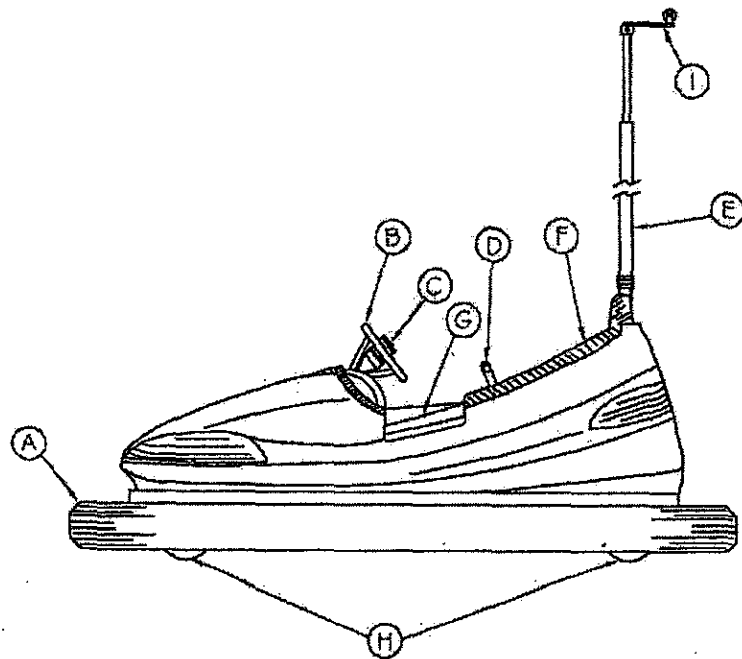
MAJESTIC BUMPER CARS

CARS (Ref. DWG. M-2194, page 23)

<u>INSPECTION LOCATION</u>	<u>INSPECT FOR</u>	
A. Bumper car tire	Proper air pressure – 10 p.s.i.	Visual
B. Steering wheel	Secure and functional	Visual
C. Steering wheel pad	Secure and functional	Visual
D. Seatbelt or Lap bar	Functional	Visual
E. Pole pad	In place	Visual
F. Seats	Adequate padding	Visual
G. Trim	No sharp edges	Visual
H. Wheels	Proper clearance	Visual
I. Trolley Wheels	Trolley wheel secure to the trolley bracket (check for excessive wear)	Visual

Note: Check A through I monthly.
Check D weekly.

Revised 01/06/03



Majestic Mfg. Inc.			
4535 ST. RT. 7 NEW WATERFORD OHIO 45449			
YEAR BORN	DATE OF BIRTH	DATE OF DEATH	DATE OF DEATH
SEX	HEIGHT	WEIGHT	HAIR COLOR
BUMPER CAR INSPECTOR-ALL RIDES			
INSPECTION			M-2194

SECTION 6

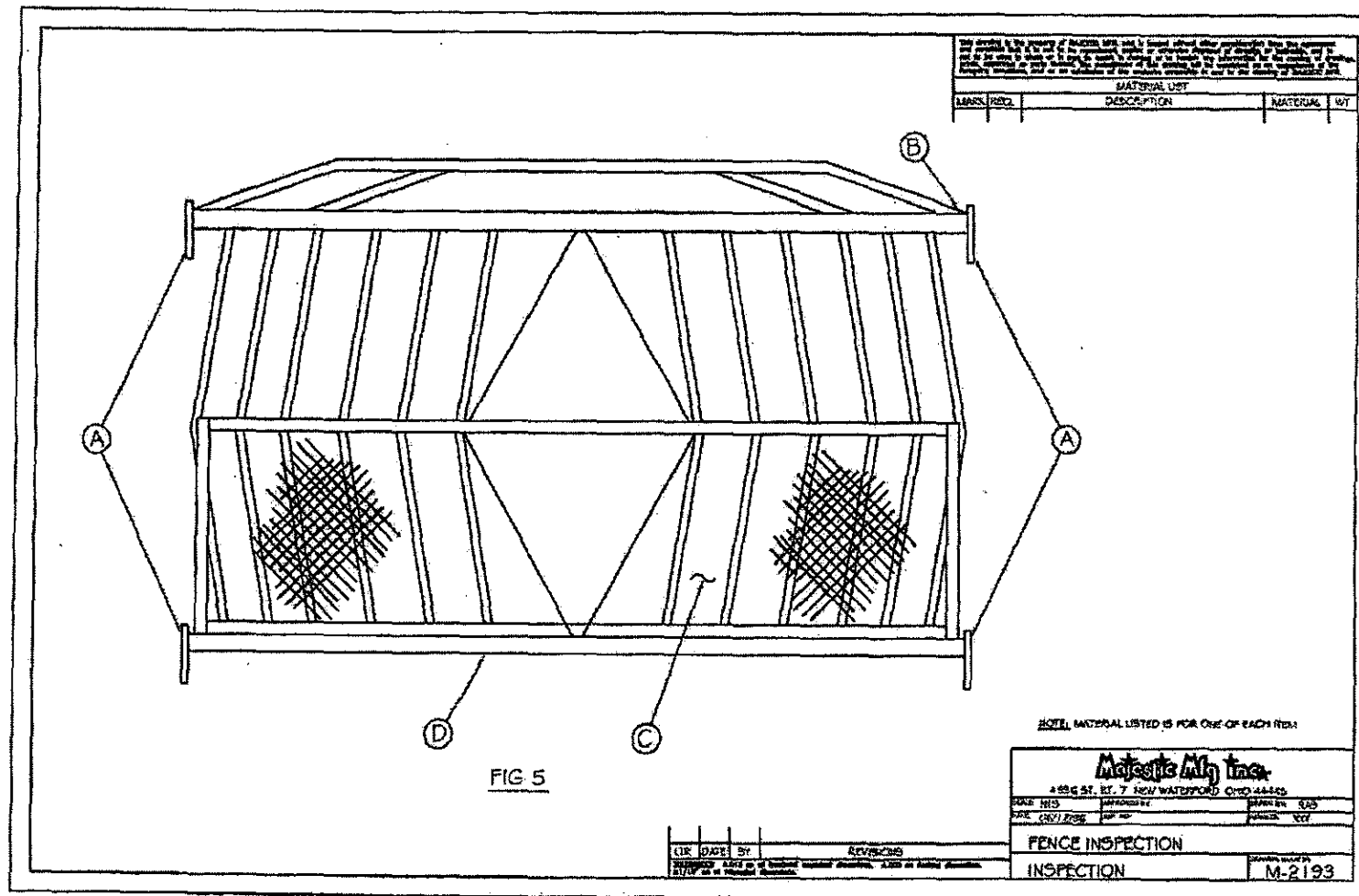
MAJESTC FENCE

FENCE (Ref. DWG. M-2193, pages 25)

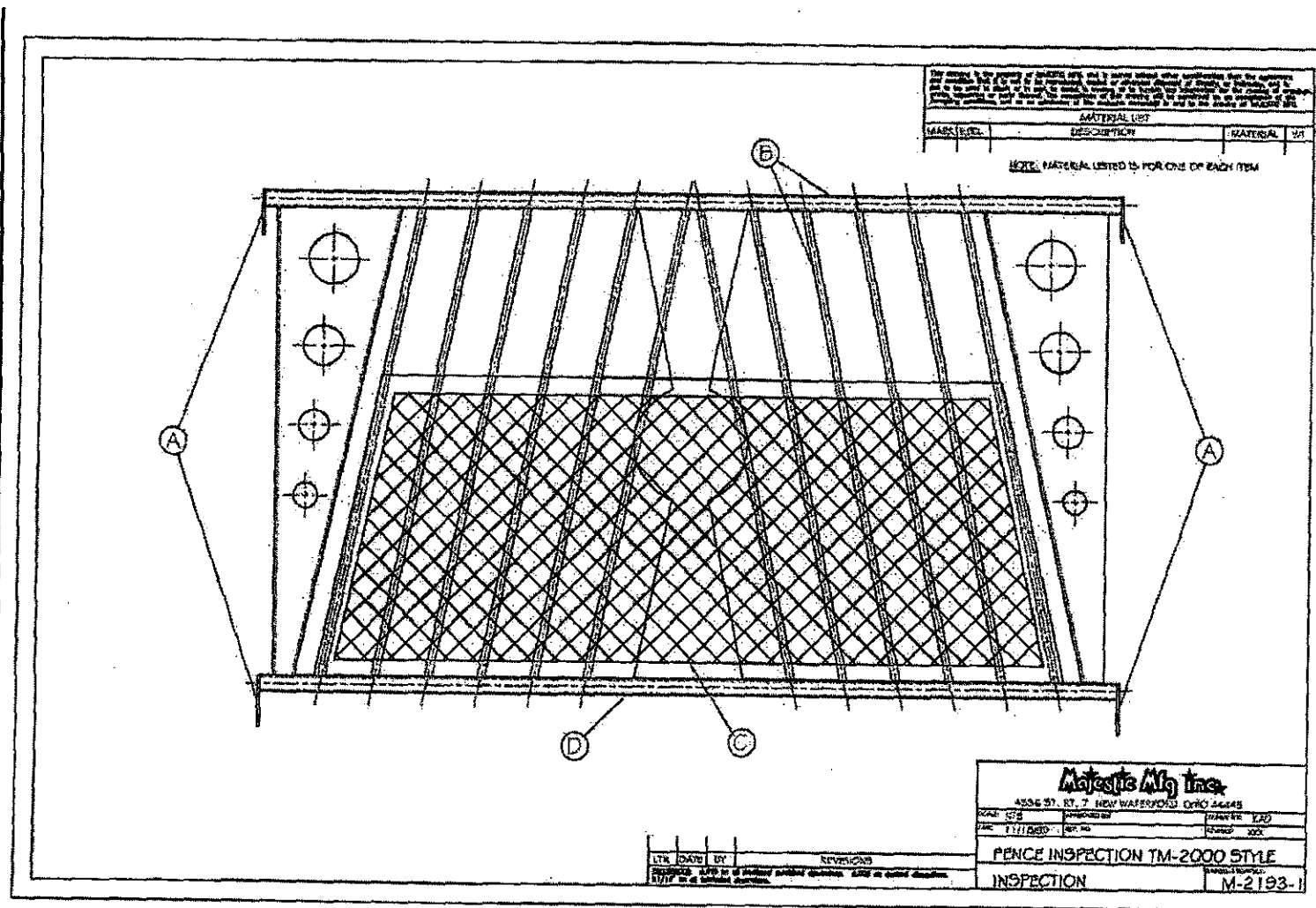
<u>INSPECTION LOCATION</u>	<u>INSPECT FOR</u>	
A. Fence ends/tabs	Broken welds	Visual
B. Fence tube/rods	Bent or broken	Visual
C. Expanded metal (If applicable – California code)	Properly secured to fence	Visual
D. Fence	Missing sections	Visual

NOTE: Check A through D weekly.

Revised 01/06/03



Revised 01/06/03



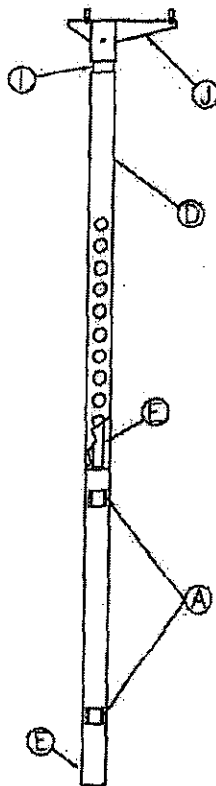
SECTION 7

POST

ALUMINUM LIGHTED (Ref. DWG's M-2195, M-2197 & M-2253, Pages 27-29)

<u>INSPECTED LOCATION</u>	<u>INSPECT FOR</u>	
A. Post fence clips	Broken welds or missing	Visual
B. Side panels	Broken welds, in place with all fasteners	Visual
C. Lexan	In place with all fasteners and not broken	Visual
D. Post	Missing post, NO post substitution	Visual
E. Post light fixtures	Secured and wired properly	Visual
F. Base plate	Broken welds	Visual
G. Top plate	Broken welds	Visual
H. Post top jack	Proper installation, proper height adjustment and proper working order	Visual
I. Wood or Nylon Insulator	Secure and tightness, sufficient clearance between aluminum	Visual
J. Post Cap	Broken welds, secure pins	Visual
*K. Post Light Bracket (If applicable)	Secure and proper wiring	Visual

NOTE: *K is for the rides that do not have expanded metal ceilings. These rides have posts with quartz lights attached at the top.

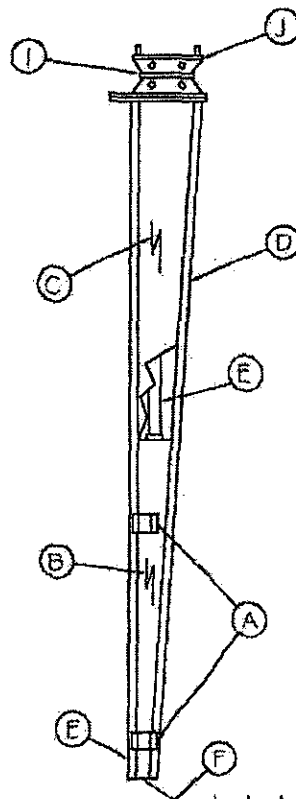


USED ON RIDES:
 TM-800, TM-1280, TM-1400
 & TM-1800 STANDARD

Majestic Mfg. Inc.		
4536 ST. RT. 7 NEW WATERFORD OHIO 44445		
DESIGN: MJS	APPROVED BY:	DATE: 08/17/98
DATE: 08/17/98	BY: MJS	BY: MJS
STANDARD 3" POST INSPECTION		INSPECTION
INSPECTION		M-2195

Revised 01/06/03

Revised 01/06/03



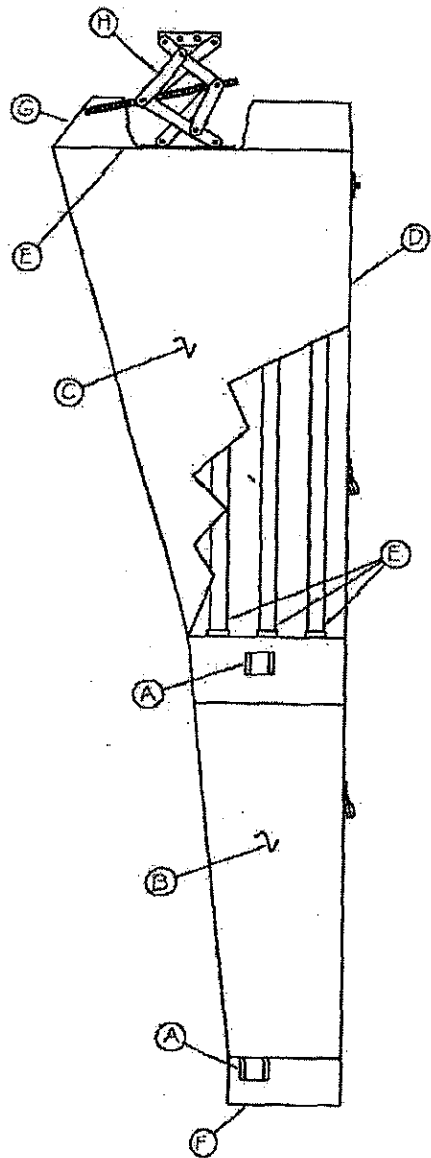
This drawing is the property of MAJESTIC, INC. and is to be used for the purpose of manufacturing only. It is not to be used for any other purpose. It is the responsibility of the user to ensure that the drawing is used for the intended purpose. It is not to be used for any other purpose. It is the responsibility of the user to ensure that the drawing is used for the intended purpose.

MATERIAL LIST			
MARK	QTY	DESCRIPTION	UNIT

USED ON RIDES:
 TM-1800 EURO, TM-2100 & TM-2700
 NOTE: MATERIAL LISTED IS FOR ONE OF EACH ITEM

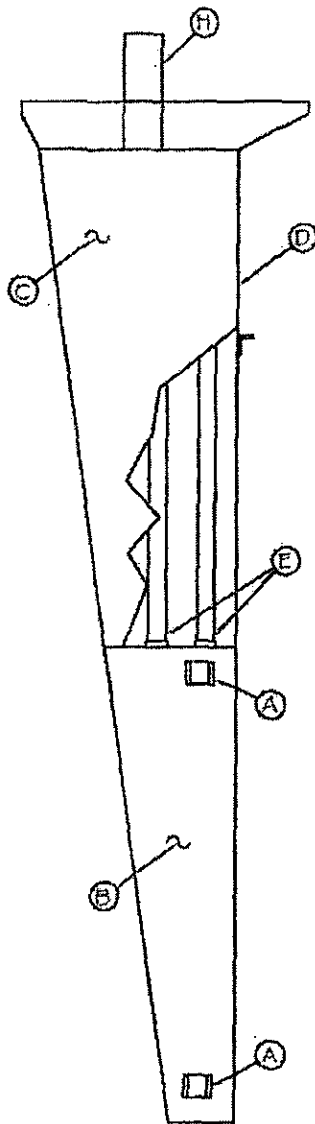
Majestic Mfg Inc.			
4538 BT. RD. 7 NEW WATERFORD OREGON 97146			
DATE: 12-3	DESIGNED BY: [Signature]	CHECKED BY: [Signature]	DATE: 12-3
DATE: 08/17/98	REV: 001	DATE: 08/17/98	REV: 001
POST INSPECTION			INSPECTOR: M-2197
INSPECTION			DATE: 08/17/98

REV	DATE	BY	REVISIONS



Majestic Mfg. Inc.			
4596 ST. ST. NEW WATERFORD OHIO 44443			
DATE: 1/1/2003	BY: [signature]	DATE: 1/1/2003	BY: [signature]
POST INSPECTION TM-2000 & TM-2400			
INSPECTION		M-2253	

Revised 01/06/03



Atlantic City Line		
4530 BT. ST. 7 NEW WATERLOO CNO 44415		
NAME: HED	ADDRESS:	PHONE: 1-20
DATE: 04/22/01	TO: 100	BY: 100
POST INSPECTION TM- 1400 M & TM- 1800 M		
INSPECTION		M-2253-1

SECTION 8

RAFTERS and CATWALKS

RAFTERS, RAFTER EXTENSIONS (Ref. DWG's M-2188 & M-2260 Pages 31-32)

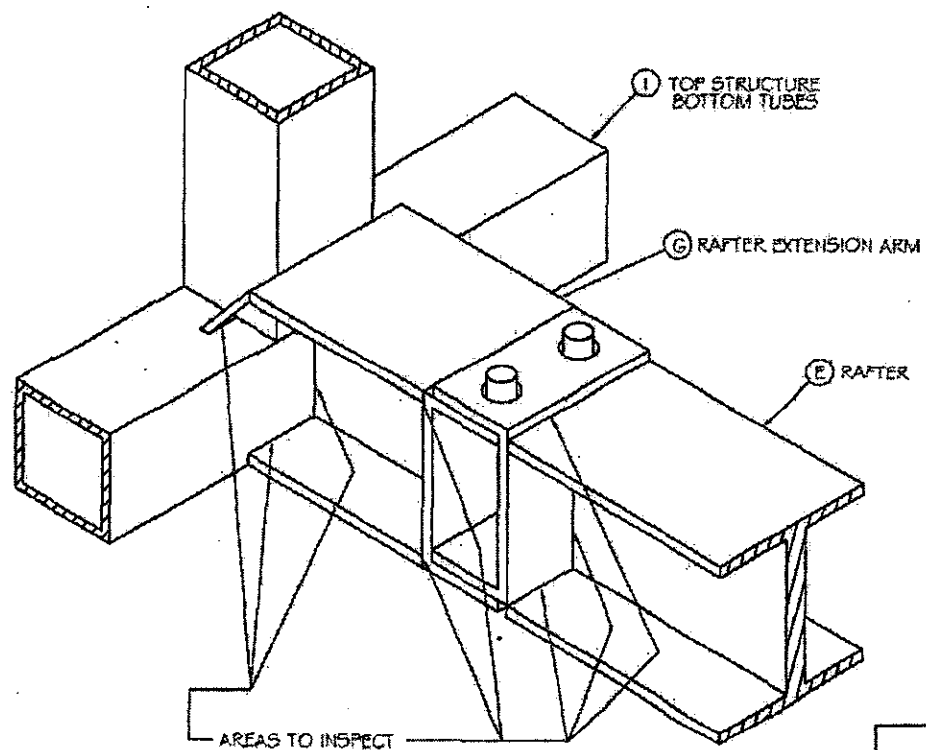
TM-900, TM-1280, TM-1400, TM-1800 Std, TM-1800 Euro, TM-2000,
TM-2100 & TM-2400

<u>INSPECTION LOCATION</u>	<u>INSPECT FOR</u>	
A. Hinge plate to trailer frame	Broken or missing bolts	Visual
B. Hinge plate	Broken welds	Visual
C. Hinge	Broken or missing bolts broken welds	Visual
D. Rafter attachment	Broken or missing bolts	Visual
E. Rafter	Broken welds excessive use or damage	Visual
F. Main Insulator Cap Weldment to Top	Broken welds	Visual
G. Rafter Extension Arms	Broken welds, pins	Visual
H. Rafter and Weldment	Broken welds	Visual
I. Top Structure Bottom Tubes	Broken welds	Visual

RAFTERS - TM-2000, TM-2400 & TM-2700 (Ref. DWG. M-2191, page 33)

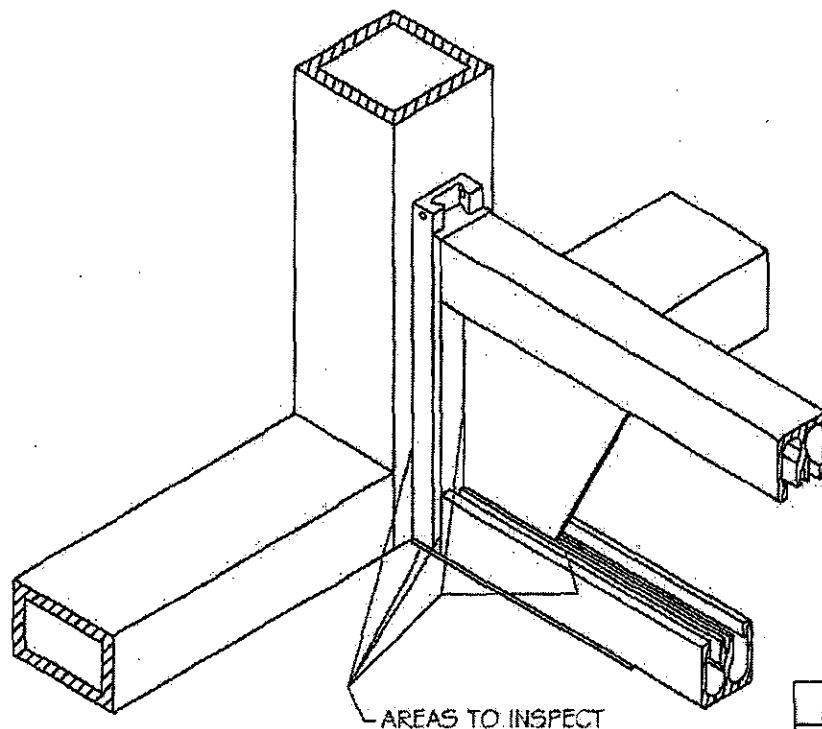
A. Dove Tails	Broken welds	Visual
B. Areas to Inspect	Broken welds	Visual

Revised 01/06/03



Asbestos Mfg. Inc.			
4936 ST. RT. 7 NEW WATERFORD OHIO 44445			
NAME	HTS	DATE	HTS
FILE	000000	DATE	0000
RAFTER INSPECTION			
INSPECTION			DATE
			M-2188

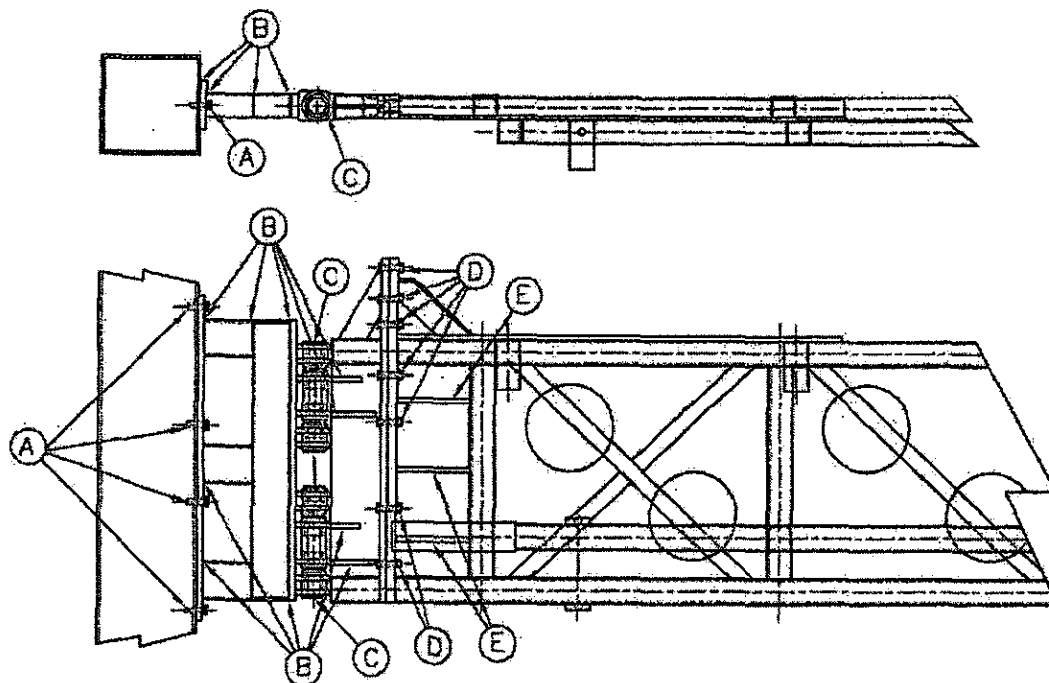
Revised 01/06/03



AREAS TO INSPECT

MAJESTIC MFG. INC.		
4536 ST RT 7 NEW WATERFORD OHIO 44445		
SCALE: NTS	APPROVED BY: REF. X-XXXX	DESIGNED BY: RAS
DATE: 6-10-86	SHEET 1 OF 1	REVISION
TM-2000, TM-2400 & TM-2700		
RAFTER INSPECTION		
INSPECTION		SHOWN NUMBER: M-2191

Revised 01/06/03



Alteste Mfg. Inc.	
4539 E. RT. 7 NEW WATERFORD OHIO 44445	
WORKS HTS	APPROVED BY
DATE 12/03/88	REVISED BY
RAFTER INSPECTION TM-2000 & TM-2400	
INSPECTION	FORM NUMBER M-2260

SECTION 8 (cont)

RAFTERS and CATWALKS

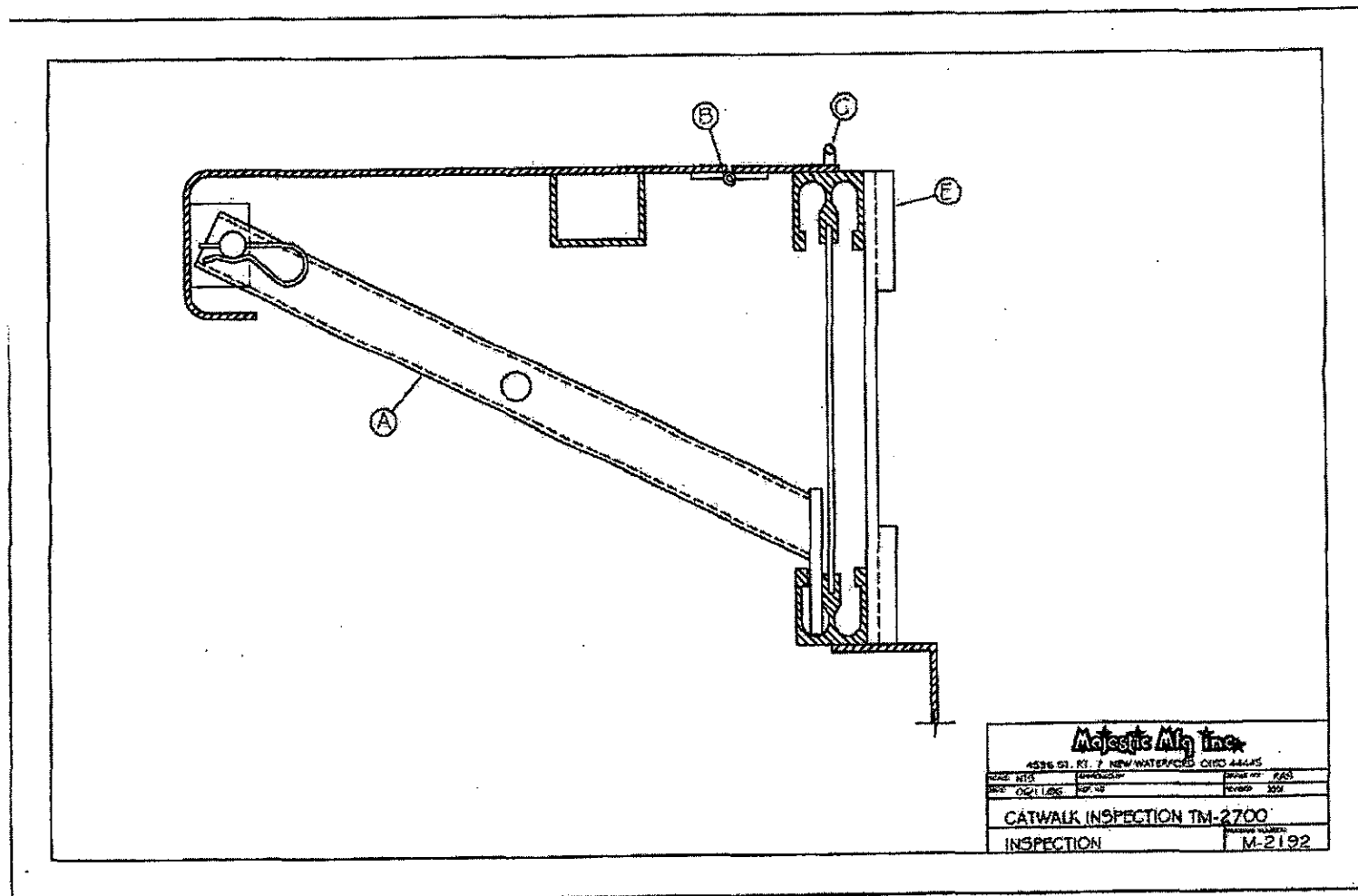
CATWALKS (Ref. DWG's M-2192, M-2256 & M-2262, pages 35-37)

TM-2000, TM-2400, & TM-2700

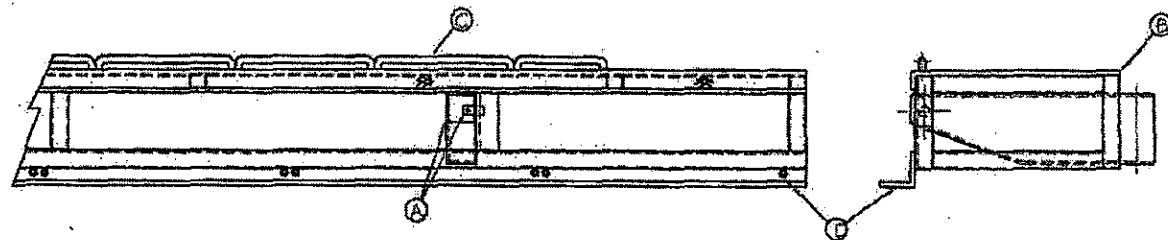
<u>INSPECTION LOCATION</u>	<u>INSPECT FOR</u>	
A. Support braces	Missing support arm Loose fitting of "R"-keys "R"-key correctly secured	Visual
B. Folding hinge	Missing pop rivets Broken hinges	Visual
C. Canvas Rod	Bent or missing rod	Visual
D. Angle	Damaged or missing Missing bolts	Visual
E. Dove Tails	Broken welds	Visual
F. Pin Holes	Excessive wear	Visual
*G. Insulators	Missing or broken, excessive wear	Visual

NOTE: *G may not be applicable to all rides.

Revised 01/06/03

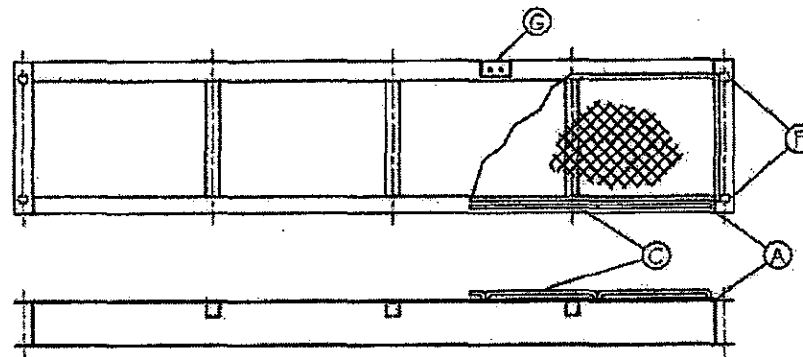


Revised 01/06/03



Majestic Alloy Inc.		
4536 ST. RT. 7, NEW WATERFORD, OHIO 44645		
PHONE: NTS	TELEFAX: NTS	CUSTOMER: F&E
FAX: 1 (716) 839-0000	PO BOX	CITY: ZOO
CATWALK INSPECTION TM-2000 & TM-2400		
INSPECTION		M-2256

Revised 01/06/03



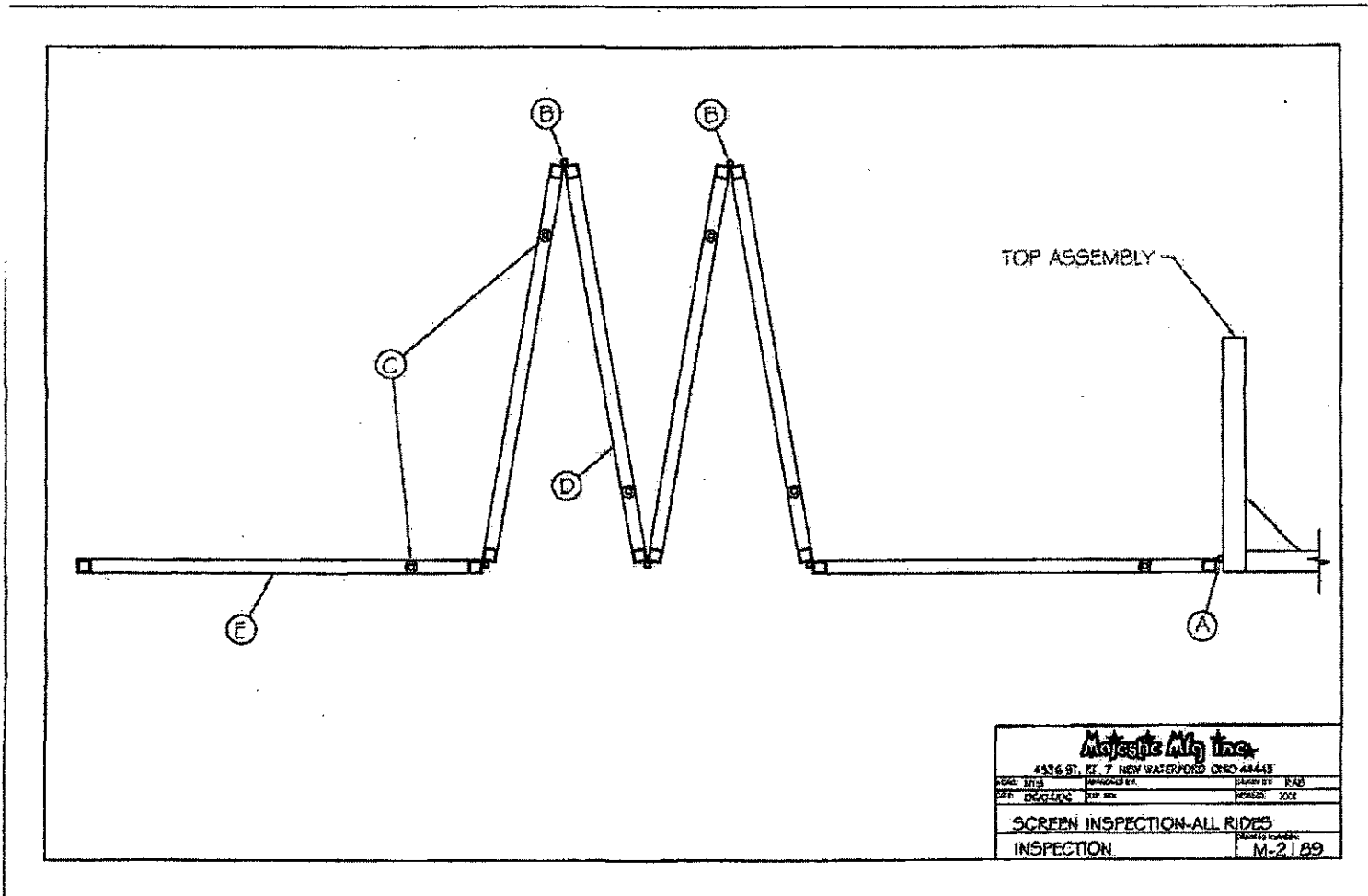
Majestic May Day			
453 G ST. RT. 7 NEW WATERFORD CT 06455			
SCALE	1/2" = 1'-0"	DESIGNED BY	DATE
DATE	REVISED	REV. NO.	REVISION
CATWALK INSPECTION - ALL RIDES			
INSPECTION			RECORD NUMBER M-2262

SECTION 9
FOLDING CEILING PANELS
(SCREENS)

PANELS (Ref. DWG. M-2189, page 39)

<u>INSPECTION LOCATION</u>	<u>INSPECT FOR</u>	
A. Main panel – hinge attachment	Broken hinge or fasteners	Visual
B. Secondary panel hinge attachment	Broken hinge or fasteners	Visual
C. Guide support rollers	Secure and functional	Visual
D. Ceiling panels	Securely attached and no gaping holes	Visual
E. Ceiling	Excessive build up and pitting	Visual

Revised 01/06/03



SECTION 10

SCENERY PANELS

SCENERY (Ref. DWG's M-2196, M-2255, pages 41-42)

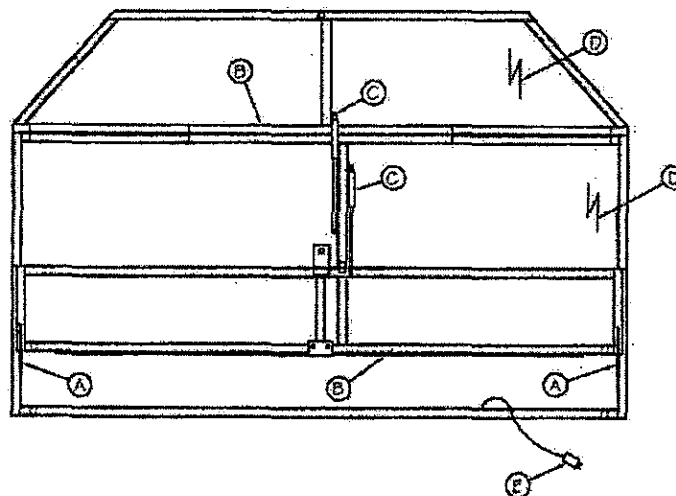
<u>INSPECTION LOCATION</u>	<u>INSPECT FOR</u>	
A. Scenery pins	Broken welds, straightness	Visual
B. Piano hinge	Broken hinges and pop rivets in place	Visual
C. Wind Brace	Bolts in place and secure Safety pins in place Broken welds	Visual
D. Wiring	Exposed or broken wires	Visual
E. Plugs	Wired correctly and secured	Visual
F. Shocks	Rivets in place and secure	Visual

SECTION 11

CANVAS

<u>INSPECTION LOCATION</u>	<u>INSPECT FOR</u>	
A. Canvas	Torn Canvas	Visual
	All quarter and center poles are in place and secure to rafters.	Visual
	Canvas cables secured to rafters	Visual
	Canvas snaps secured to catwalk rods	Visual

Revised 01/06/03



Majestic Mfg. Inc.			
4576 ST. RT. 7 NEW WATERFORD OHIO 44665			
PLAN: 102	DRAWN BY:	DATE: 02/20/03	REV: 02
SCENERY PANEL INSPECTION			INSPECTION
M-2196			