

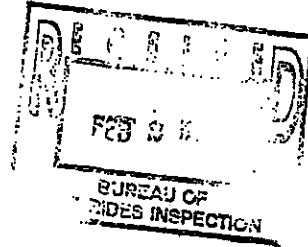


February 2, 1999

To: Mike Rinehart
Florida Dept of Agriculture

Fax: 1-350-488-9023

Re: Routine Maintenance Reminder



Dear Mr. Rinehart,

Please remember to inspect your Frog Hopper or Rodeo Rider cables for wear. This should be included in your daily inspection. Look for breaks in the wires and for wear, frays or kinks. A single broken wire will cause the cable to lose strength rapidly and means the cable has seen excessive wear.

If you see a broken wire, do not operate the Frog Hopper until you have replaced the cable. Included with this letter are pages from the Frog Hopper/Rodeo Rider Maintenance Manuals on General Maintenance Procedures, 24-Hour Shift change Inspection Sheets and 5000 cycles or Monthly Maintenance checklist.

If you need to purchase additional cables or if you have any questions, please call Kevin Geddes at 435-752-1987.

Sincerely,

Jacob Rippstein
Children's Ride Sales

*This is a copy
of our letter to
Frog Hopper &
Rodeo Rider
customers -
Jane Simmons*

9904 S&S FROG HOPPER -
POWER

SECTION 8: Maintenance Inspection Forms

8.2: 5000 CYCLES OR MONTHLY MAINTENANCE CHECKLIST

Inspect and perform necessary maintenance on the following and initial all check boxes.
Refer to Section 5 of the *Maintenance Manual* for details.

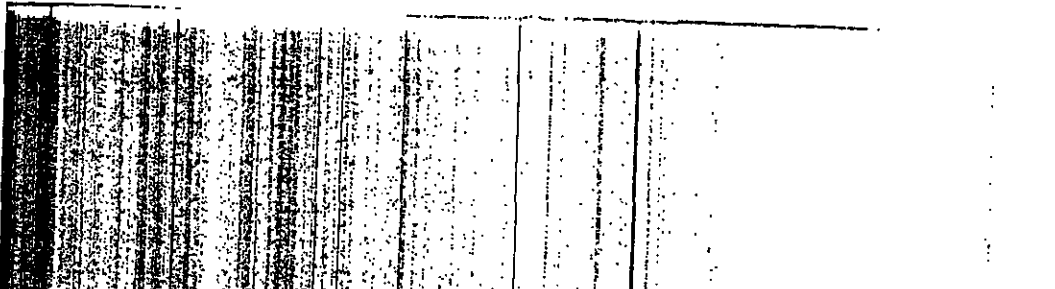
- 1. Seat/restraints
- 2. Cables
- 3. Passenger cart
- 4. Base structure
- 5. Sheave head
- 6. Sheave assemblies
- 7. Electrical components
- 8. Fluid levels
- 9. Hydraulic system
- 10. Boom structure
- 11. Power system
- 12. Loading area
- 13. Oil filter
- 14. Lights

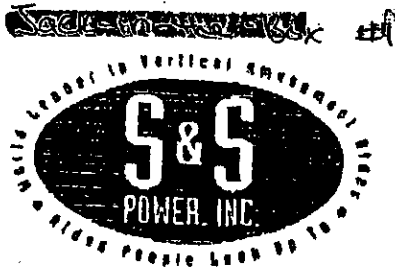
The last 5,000 cycle or monthly maintenance inspection was performed on:
(Date) _____

by Authorized maintenance personnel (Name) _____

This 5,000 cycle or monthly maintenance inspection was performed on
(Date) _____

by Authorized maintenance personnel (Signature) _____





August 7, 2000

Re: Frog Hopper™ Maintenance

It has come to our attention that many Frog Hopper™ (Owner/Operators have not performed adequate maintenance on their respective hydraulic systems. Allowing your hydraulic systems to become contaminated may cause serious ride malfunction. We must reiterate that it may cause unsafe conditions to allow your hydraulic systems to go without proper maintenance and/or inspection. Allowing contamination to enter your systems may cause malfunction in any of the valves on your ride.

In an effort to make your ride as safe as possible we will be sending you a flow compensated flow control valve which we will ask to be placed on the ride immediately. If you allow some contamination to get in your system, your ride valves could malfunction. This valve add-on will help to prevent a possible ride failure under these conditions. However, this valve is not intended to replace proper maintenance,

This letter is to serve as a notice that this flow control valve is on its way. It will be arriving within a few days of this letter. The flow control valve will be accompanied by instruction of how and where to install it. Installation is simple and will require only an adjustable wrench and about 10 min. to install.

Thank you.

Lawrence Allen P.E.
Mechanical Engineer
S&S Powers
S & S Power



3-

August 9, 2000

To:

From:

I, Vertical
People LaoN
∞

Frog Hopper Maintenance Personnel

Ray Phister

S&S Power, Inc.

Service Department

Subject: Instructions for Installing the Flow Control Valve

To properly install the flow control valve, follow instructions 1-3 as listed below:

- 1- Make sure all power is disconnected and the hydraulic pumps are off.
- 2- Disconnect the return hydraulic line that connects to the oil filter that connects to the supply tank inside the base of the ride. The tank is located in the upper left portion of the base. See picture # 1.

Attach the connectors as shown in the picture to the hydraulic line and to the elbow coming off the filter. Placing the flow control valve " in line " with the hydraulic return line. See picture #2.

After installation the system does not need to be bleed.

THE FLOW CONTROL VALVE IS ADJUSTED AT THE FACTORY, DO NOT ATTEMPT TO ADJUST THE VALVE.

Should you have any questions regarding the installation of the Flow Control Valve, or the reasons for doing it, please contact Mr. **Ray Phister** in our Frog Hopper service department 1-435-752-1987.

Thanks,

Ray Phister

Phnne- 435-752-1981 ,Fax: 435-192-1948 .350 West 2500 North .600ao, Utah843



S&S POWER, INC.
350 West 2500 North ♦ Logan, Utah 84341 USA
Phone: (435) 752-1987 ♦ Fax: (435) 752-1948
<http://www.s-spower.com>

SERVICE BULLETIN No. 02.05.01

DATE: May 7, 2002
TO: Owners and Operators of Frog Hopper Rides
AT: Park Management and Maintenance Management
FROM: Scott Holliday, Service Department Manager
SUBJECT: Notification

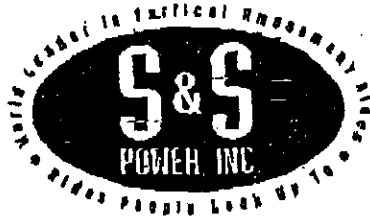
On April 13, 2002, an S & S Frog Hopper® ride reportedly malfunctioned, resulting in the rapid descent of the passenger seat. While there do not appear to have been any injuries, the State of New Jersey (where this incident occurred) has chosen to suspend operation of the Frog Hopper® rides, pending an acceptable correction for what they have determined to be potentially injurious.

In our efforts to be proactive with solutions, we have determined the two following corrections approved by New Jersey:

- 1) A catch shock can be installed beneath the passenger seat at a materials cost of approximately \$700.00 USD per Frog Hopper® ride. Installation cost would be minimal.
- 2) The existing cylinders can be removed and replaced with cushion cylinders at a materials cost of approximately \$3,700.00 USD. This enhancement to the ride also requires some modification to the boom and hydraulic system.

It has come to our attention that some operators/owners of the S & S Frog Hopper® ride may have made unauthorized adjustments to the "flow control valves". The flow control valve is set at the factory, the purpose of which is to control the rate of descent of the passenger seat should a valve or relay stick. If you have made any adjustment to these valves, please contact S & S immediately, and you will be instructed on how to return them to their proper setting.

Please contact Lawrence Allen (Engineering Department), Eric Schless (children's ride production), or Scott Holliday (Service Department) at (435) 752-1987 with any questions you may have.



SEP 13 2002

9/10/02

To: Whom it may concern
From: Lawrence Allen
Re: Frog Hopper™ weld inspection

To clarify inspection requirements for the Frog Hopper ride, We require the following:

1 year interval: Visual inspection of all welded joints on the Frog Hopper™

3 year interval: NDT Magnetic particle or Ultrasonic testing of the following joints:

- Bolt mount plate at frame attachment location
- Tube steel frame at all corners and joints
- Base bolt mount plates at connection to boom sides
- Upper boom attach brackets at connection to boom sides
- Lower cylinder mount
- Mount block of stationary pulley
- Cart trolley joints
- Seat boom attachment to trolley
- Rocker arm attachments

Thank you,

Lawrence Allen P.E.
S & S Power



FROG HOPPER™ / RODEO RIDER™

Preventative Maintenance / NDT Schedule

<u>Item</u>	<u>Required Action</u>
Wire Rope Replacement	Annually
Oil Filter Replacement	First 50 hour interval and Every 250 hours thereafter
Hydraulic Hose Replacement	Every 3 years
Electrical Control Relays	Annually
NDT Boom and Base Welds	Every 3 years
 <u>Item</u>	 <u>Suggested Action</u>
Sheave Bearing Replacement	Annually
Down Valve Replacement	Every 3 years
Hydraulic Cylinder Rebuild or Replace	Every 50,000 cycles
Hydraulic Accumulators rebuild or replace	Annually or 30,000 cycles
Cart Wheels	Annually
Oil change	Annual

Note: The suggested action item list is intended to help decrease down time during the operating season.



*Copies: Pat
Dane
Jim Conroy
State 10/21/03*

S & S POWER, INC.
350 West 2500 North Logan, Utah 84341

USA

Phone: (435) 752-1987 Fax: (435) 752-1948

<http://www.s-spower.com>

SERVICE BULLETIN No 03.10.10

DATE: October 9, 2003
TO: Frog Hopper and Rodeo Rider Owners
ATTN: Maintenance Department
FROM: S&S Service Department
SUBJECT: NDT Inspection

S & S Power has implemented a NDT and retirement schedule for some critical components on S & S Frog Hopper and Rodeo Rider Rides. This schedule is an addendum to your Maintenance Manual and should be installed into your Maintenance Manual. This addendum supercedes any previous inspection criteria, pertaining to these components, which may be contained in the Maintenance Manual. All ride owners should adhere to this schedule.

Ref. sheet 2 (Preventative Maintenance / NDT Schedule)

Scott Holliday
Service Department Manager



August 3, 2004

State of New Jersey
Department of Community Affairs
101 So. Broad Street
P.O. Box 808, 3rd floor
Trenton, NJ 08625

ATTN: Andreas Lichter

RE: Frog Hoppers – S & S Power, Inc.
NJ Serial #3595, #3596 and #3606

Dear Andy:

I enclose herewith a copy of a Service Bulletin received via facsimile from S & S Power, Inc. regarding the Frog Hopper rides. This Bulletin references previously issued Service Bulletin 03.10.10 and was recirculated in an effort to clarify instructions within that Bulletin. All of the NDT suggested action items and maintenance information have already been made a part of the ride manual. However, in the directive received today, S & S Power included drawings.

If you have any questions, please don't hesitate to contact me.

Patrick Smith
Director of Attractions Maintenance

PS:jm
Encl.

*Copy: Pat
Dana
Jill
Hale
f.w./f.a.*



S&S POWER, INC.
350 West 2500 North Logan, Utah 84341 USA
Phone: (435) 752-1987 Fax: (435) 752-1948
<http://www.s-spower.com>

SERVICE BULLETIN No 03.12.10

DATE: December 10, 2003
TO: Frog Hopper Owners
ATTN: Maintenance Department
FROM: Scott Holliday
SUBJECT: Frog Hopper NDT Schedule

It has come to our attention that there has been some confusion concerning Service Bulletin 03.10.10. We are issuing this bulletin in an effort to eliminate this confusion. Please refer to the following NDT schedule located on page 2 of this document.

This schedule is an addendum to your Maintenance Manual and should be installed into your Maintenance Manual. This addendum supercedes any previous inspection criteria, pertaining to these components, which may be contained in the Maintenance Manual. All ride owners should adhere to this schedule.

Ref. sheet 2 (Preventative Maintenance / NDT Schedule)



FROG HOPPER™ / RODEO RIDER™

Preventative Maintenance / NDT Schedule

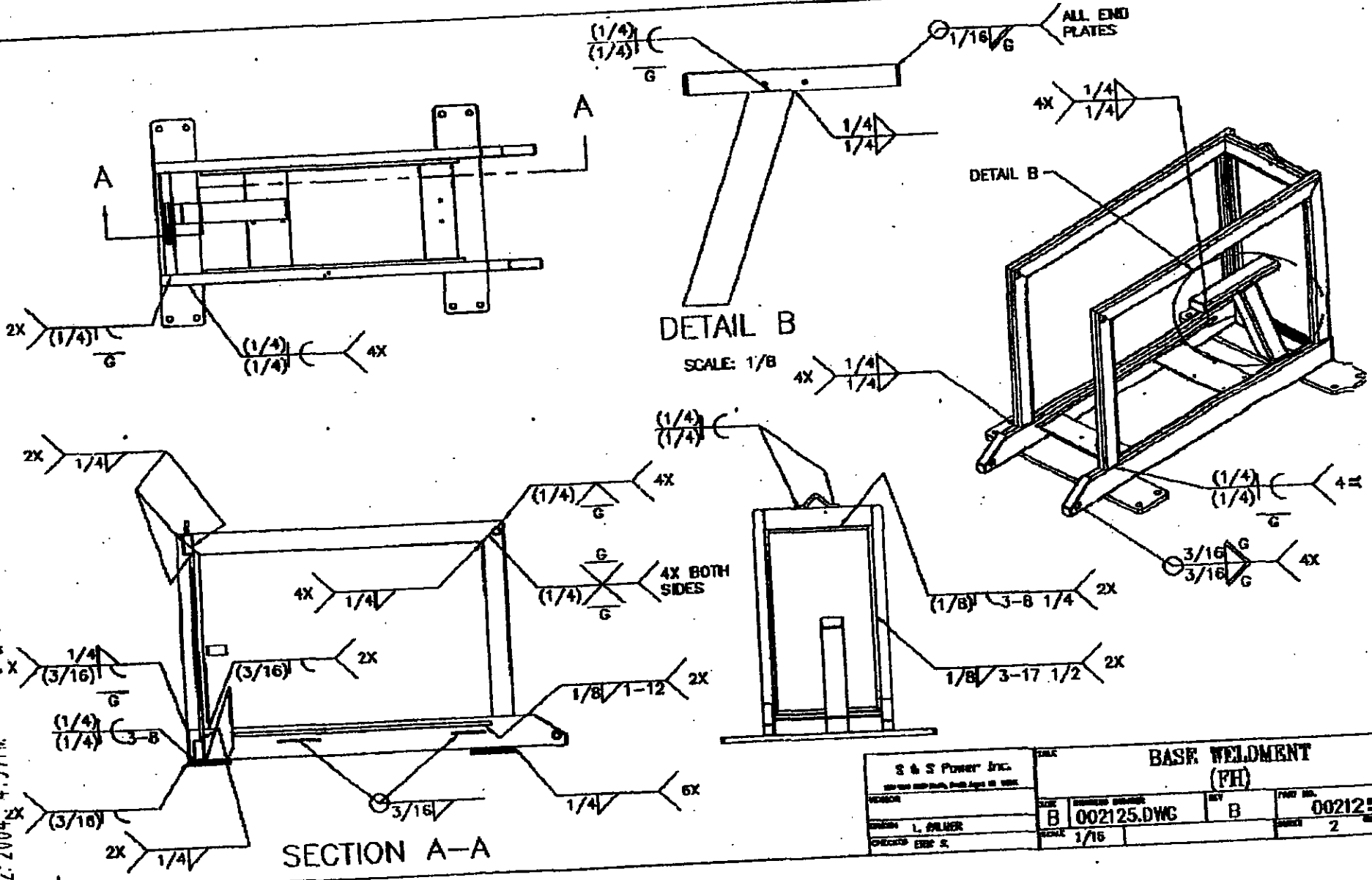
<u>Item</u>	<u>Required Action</u>
Wire Rope	Replace Annually
Oil Filter	Replace First 50 hour interval and Every 250 hours thereafter
Hydraulic Hose	Replace every 3 years
Electrical Control Relays (Up, Slowdown, Down Valve)	Replace Annually
NDT Boom and Base Welds	
(Refer to drawings F-FRG-BOO-W-2, and 002125	
This includes all welds on the base and boom.	Every 3 years

(Pre 2004 models Visual Inspection is required. Mag-particle is suggested. Post 2003 models Mag-particle is required.)

SUGGESTED ACTION ITEM

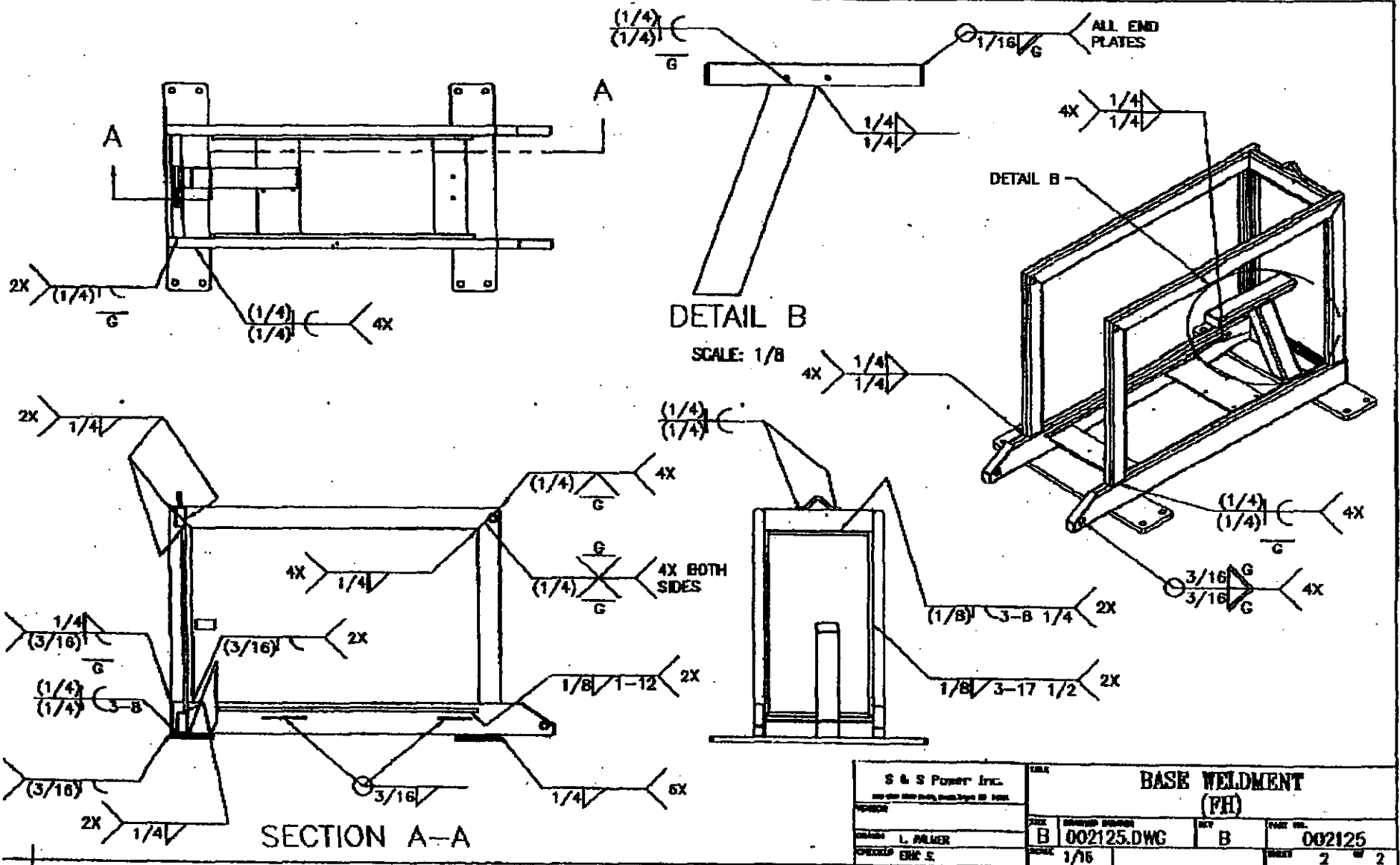
<u>Item</u>	<u>Suggested Action</u>
Sheave Bearing	Replace Annually
Down Valve	Replace every 3 years
Hydraulic Cylinder Rebuild or Replace	Every 50,000 cycles
Hydraulic Accumulators rebuild or replace	Annually or 30,000 cycles
Cart Wheels	Replace Annually
Oil change	Replace Annually

NOTE: Items included in the Suggested Action item list are not Safety Critical. They are only here to eliminate down time for repairs. They are suggestions only! S&S Power does not require the replacement of these items. We mention these items only to help the parks keep the rides up and running.

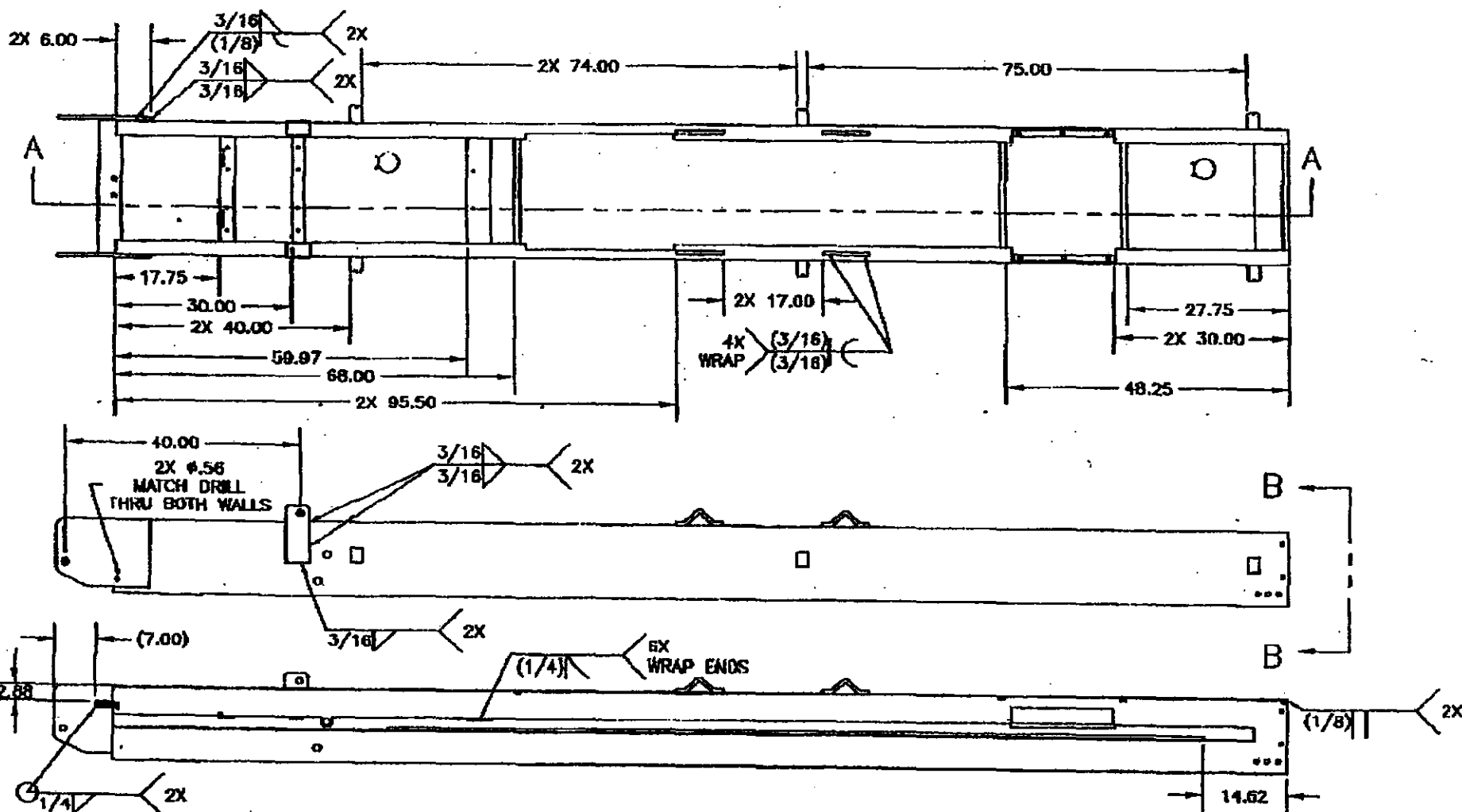


AUG 2, 2004 4:55 PM 3010

S & S Power Inc. 100 West Main Street, Suite 100, Erie, PA 16590		TITLE BASE WELDMENT (PH)	
DESIGNER L. PALMER	DATE 1/15	DRAWN 002125.DWG	REV B
CHECKED ERIC S.	SCALE	SHEET 2	TOTAL SHEETS 5
PART NO. 002125		REV 2	



S & S Power Inc. 100 10th Ave SW, Grand Rapids, MI 49508		TITLE BASE WELDMENT (FH)	
DESIGNER L. PALMER	DATE B	QUANTITY 002125.DWG	DRAWN BY B
CHECKED EMK S	SCALE 1/16	PART NO. 002125	
		SHEET 2 OF 2	



SECTION A-A

S & S Power Inc. 210 East 10th Street, South Ogden, Utah		TITLE WELDMENT, BOOM (FH) (TUV)	
DESIGN C. LARIC	SCALE 1/16	ORDER NUMBER F-FRC-800-W-2	PART NO. B
CHECKED E. SCHWES			DRY 2 of 2



Effective date: 4-8-2004
Bulletin Number: 03.12.11
FROG HOPPER™ / RODEO RIDER™

Preventative Maintenance / NDT Schedule

<u>Item</u>	<u>Required Action</u>
Wire Rope	Replace Annually
Oil Filter	Replace First 50 hour interval and Every 250 hours thereafter
Hydraulic Hose	Replace every 3 years
Electrical Control Relays (Up, Slowdown, Down Valve)	Replace Annually
NDT Boom and Base Welds	
(Refer to drawings F-FRG-BOO-W-2, and 002125	Every 3 years
Bolt mount plate at frame attachment location.	
Tube steel frame at all corners and joints.	
Base bolt mount plates at connection to boom sides.	
Upper boom attach brackets at connection to boom sides.	
Lower cylinder mount	
Mount block of stationary sheave	
Cart trolley joints	
Seat boom attachment to trolley	
Rocker arm attachment	

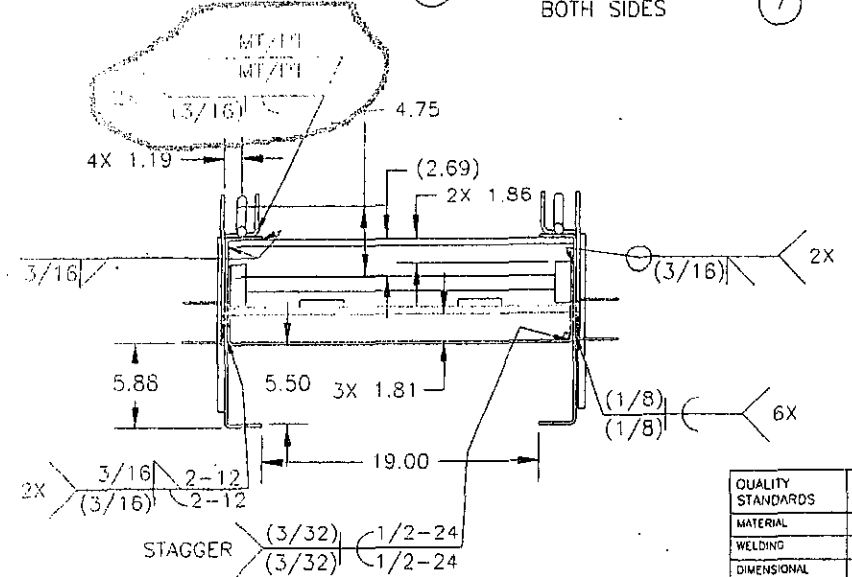
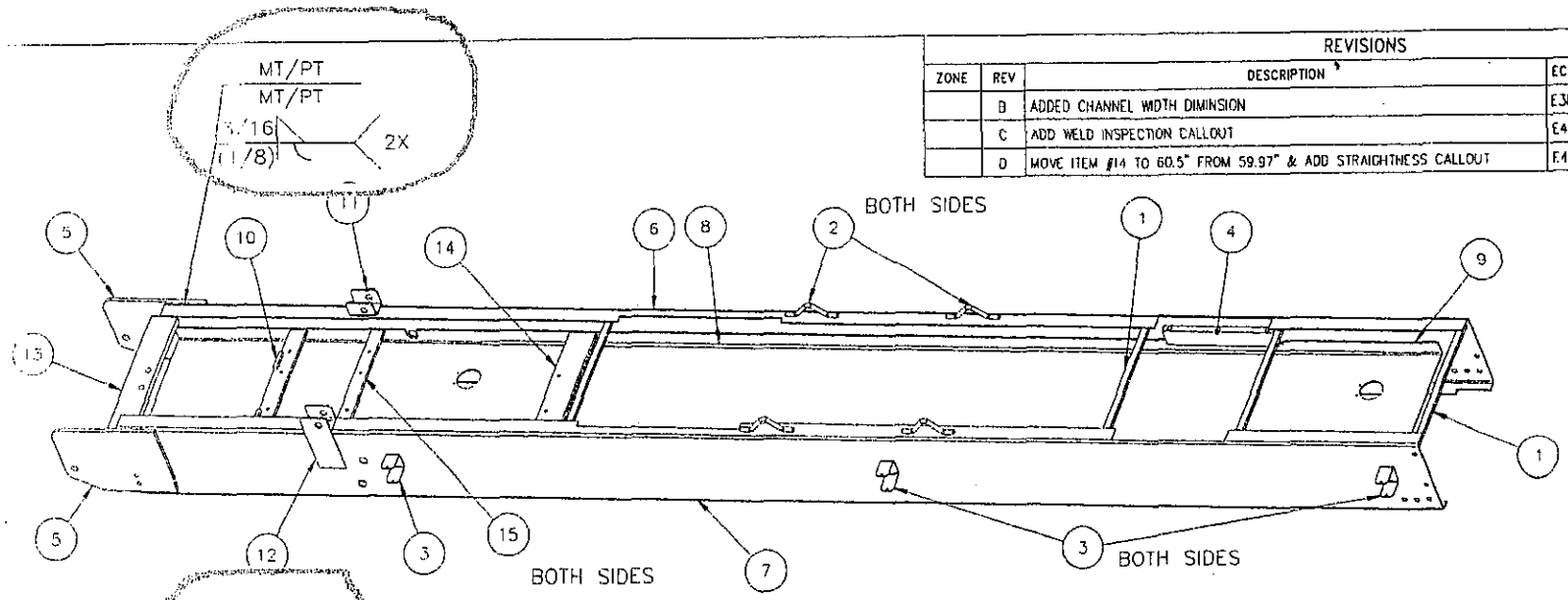
(Pre 2004 models Visual Inspection is required. Mag-particle is suggested. Post 2003 models Mag-particle is required.)

SUGGESTED ACTION ITEM

<u>Item</u>	<u>Suggested Action</u>
Sheave Bearing	Replace Annually
Down Valve	Replace every 3 years
Hydraulic Cylinder Rebuild or Replace	Every 50,000 cycles
Hydraulic Accumulators rebuild or replace	Annually or 30,000 cycles
Cart Wheels	Replace Annually
Oil change	Replace Annually

NOTE: Items included in the Suggested Action item list are not Safety Critical. They are only here to eliminate down time for repairs. They are suggestions only! S&S Power does not require the replacement of these items. We mention these items only to help the parks keep the rides up and running.

REVISIONS					
ZONE	REV	DESCRIPTION	ECN#	DATE	APPROVED
	B	ADDED CHANNEL WIDTH DIMENSION	E3828	4/21/03	K. MERRITT
	C	ADD WELD INSPECTION CALLOUT	E4108	1/27/04	K. MERRITT
	D	MOVE ITEM #14 TO 60.5" FROM 59.97" & ADD STRAIGHTNESS CALLOUT	E4816	2/24/05	K. MERRITT



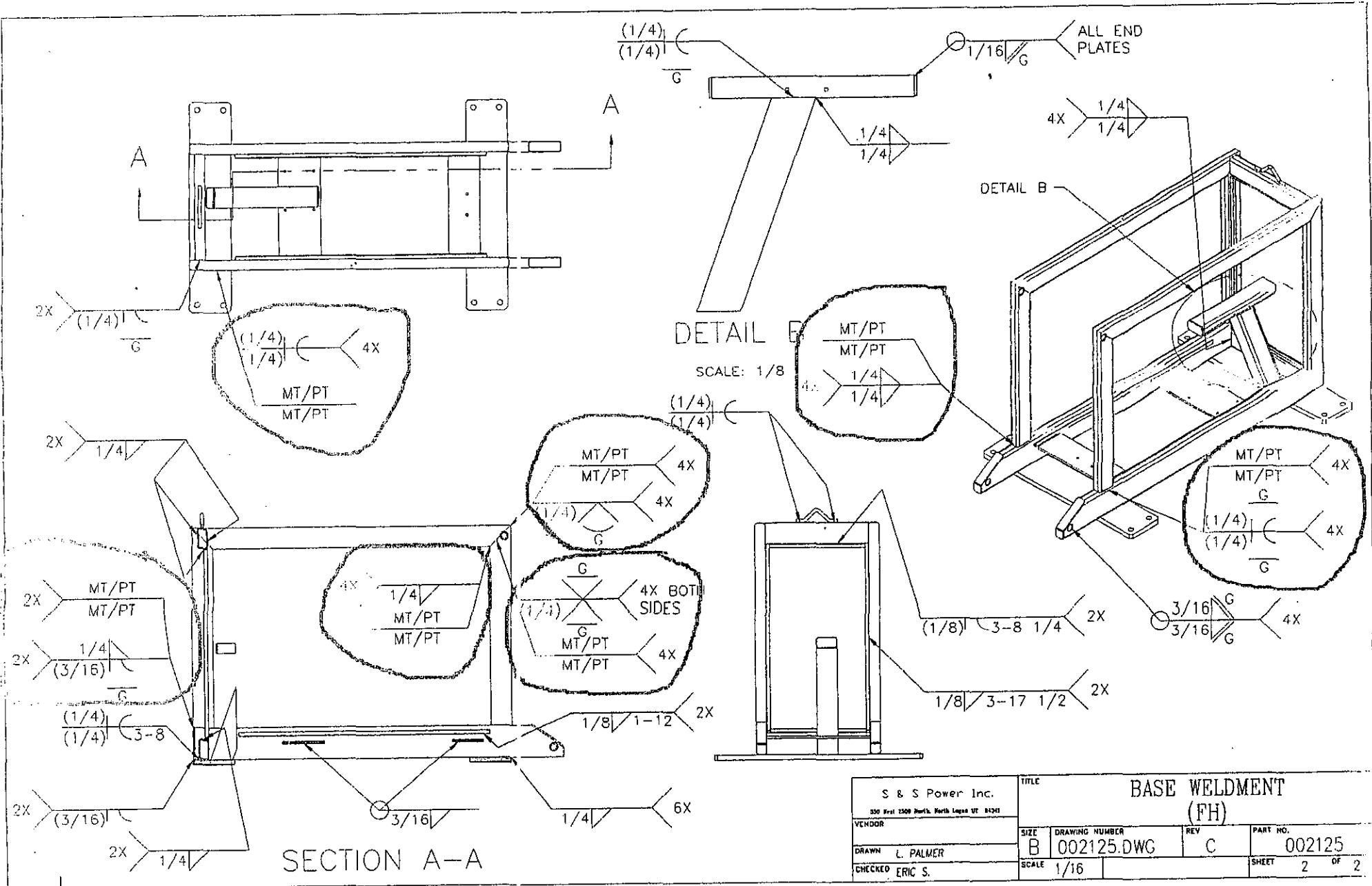
VIEW B-B

SCALE: 1/8

ITEM NO.	QTY	REDD.	PART DESCRIPTION	PART NO.
15	1		MOUNT, UPPER ACCUMULATOR (FH)	001163
14	1		MOUNT, UPPER CYLINDER (FH)	F-FRG-B00-3
13	1		LOWER CYLINDER MOUNT (FH)	551337
12	1		WELDMENT, BASE ATTACHMENT TAB (FH)	002179
11	1		WELDMENT, BASE ATTACHMENT TAB (FH)	002178
10	1		WELDMENT, LOWER ACCUMULATOR MOUNT (FH)	002175
9	1		CENTER CHANNEL (FH)	001181
8	1		CONDUIT, BOOM (FH)	002185
7	1		CHANNEL, SIDE (FH)	002184
6	1		CHANNEL, SIDE (FH)	002183
5	2		PLATE, BASE (FH)	902578
4	2		BLOCK, PULLEY HEAD MOUNTING, (FH)	990525
3	6		BRACKET, LIGHT (FH)	551361
2	4		LIFT HOOK (FH)	551362
1	4		BRACE (FH)	551338

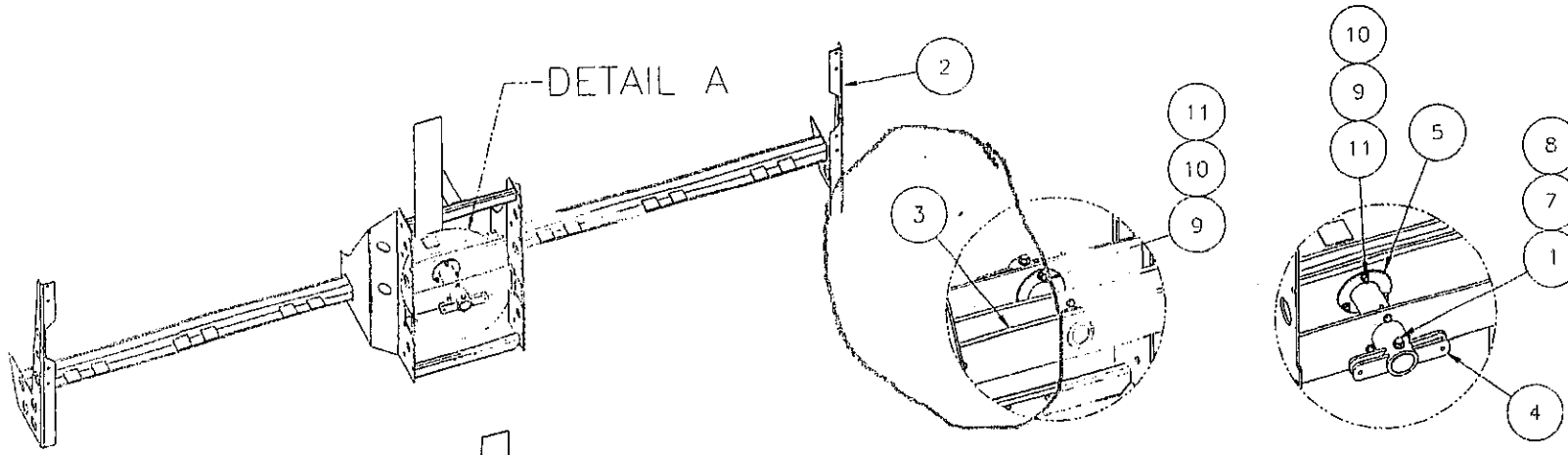
QUALITY STANDARDS	SPECIFICATIONS
MATERIAL	-
WELDING	AWS, CERTS
DIMENSIONAL	-
HEAT TREAT	-
COATING	PAINT AS PER JOB SPEC
MARKING	SERIAL NO. ON 551337
MISC. TESTING	-

BY	DATE	S & S Power Inc. 250 West 2500 North Logan, UT 84341 PH (435)762-1087	
DRN. C. MUNK	1/30/02		
CHK. D. UDY	1/31/02		
APPV. E. SCHIESS	1/31/02	WELDMENT, BOOM (FH) (TUV)	
<small>UNLESS OTHERWISE SPECIFIED</small> <small>ALL DIMENSIONS ARE IN INCHES</small> <small>FRACTIONS SHALL BE SHOWN IN DECIMALS</small> <small>DECIMALS SHALL BE SHOWN TO TWO DECIMALS</small> <small>UNLESS OTHERWISE SPECIFIED</small> <small>ALL DIMENSIONS ARE IN INCHES</small> <small>FRACTIONS SHALL BE SHOWN IN DECIMALS</small> <small>DECIMALS SHALL BE SHOWN TO TWO DECIMALS</small>		SIZE: B DRAWING NUMBER: F-FRG-B00-W-2 Scale NA	PART NO.: F-FRG-B00-W-2 Sheet 1 of 2



S & S Power Inc. 350 West 1200 North, North Logan UT 84301		TITLE BASE WELDMENT (FH)		
VENDOR	SIZE B	DRAWING NUMBER 002125.DWG	REV C	PART NO. 002125
DRAWN L. PALMER	SCALE 1/16			SHEET 2 OF 2
CHECKED ERIC S.				

REVISIONS					
ZONE	REV	DESCRIPTION	ECH#	DATE	APPROVED

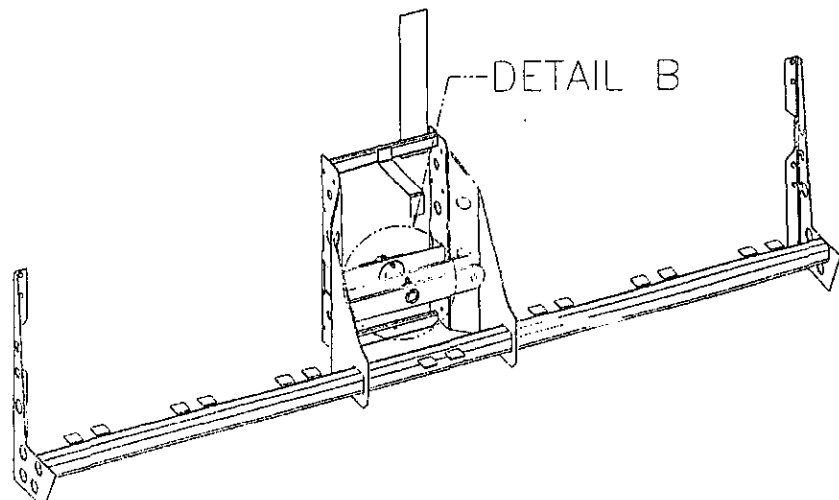


DETAIL B

SCALE: 1/8

DETAIL A

SCALE: 1/8



See
Drawing

11	6	NYLON INSERT LOCKNUT, 1/4-20 UNC	NLN-250C
10	12	FLAT WASHER, SAE, 1/4, ZINC	FLWSAE-250ZC
9	6	HEX HEAD CAP SCREW, 1/4-20 UNC X 1 1/4, ZINC, GR5	HHCS-250CX1250ZC
8	1	NYLON INSERT LOCKNUT, 3/8-16 UNC	NLN-375C
7	2	FLAT WASHER, SAE, 3/8, ZINC	FLWSAE-375ZC
6	1	CABLE PIVOT BUSHING, BACK (FH)	991011
5	1	CABLE PIVOT BUSHING, FRONT (FH)	991010
4	1	WELDMENT, CAM TRIGGER (FH)	002281
3	1	WELDMENT, CABLE PIVOT (FH)	002278
2	1	WELDMENT, CART (FH)	002268
1	1	HEX HEAD CAP SCREW, 3/8-16 UNC X 3, ZINC, GR5	HHCS-375CX3000ZC
ITEM NO.	QTY REQ.	PART DESCRIPTION	PART NO.

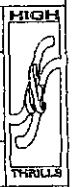
BY	DATE:
DRN. D. UDY	11/16/00
CHK. E. SCHIESS	01/04/01
APPV. L. ALLEN	01/04/01

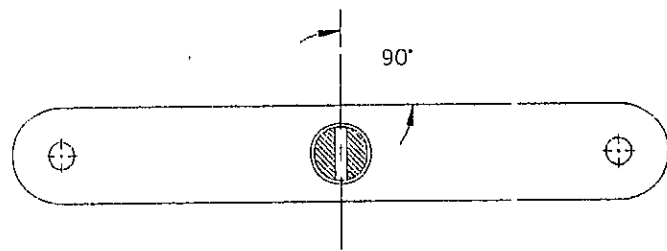
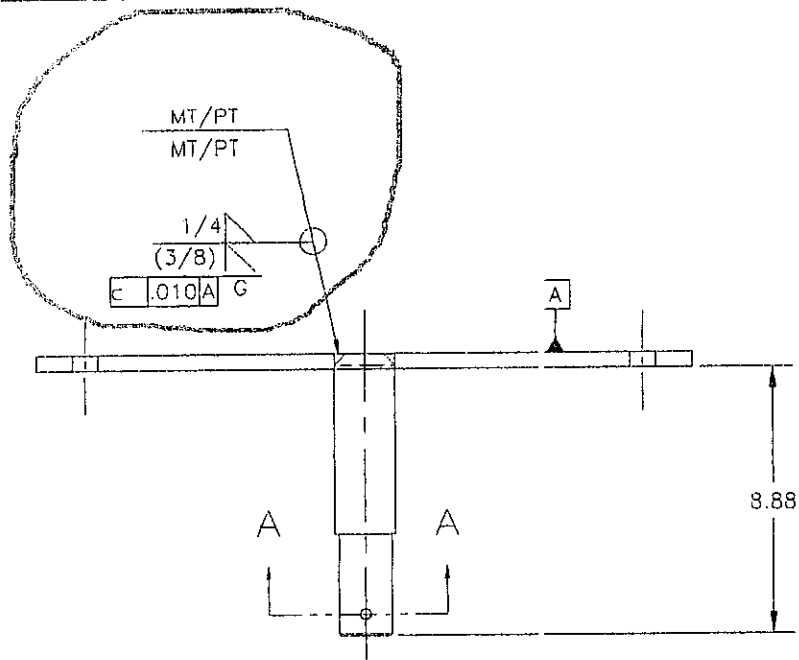
S & S Power Inc.
350 West 2500 North, Logan, UT 84301
Ph. (435)752-1807

**ASSEMBLY, CART WELDMENT
AND CAM TRIGGER (FH)**

SIZE	DRAWING NUMBER	PART NO.
B	002284.DWG	002284

Scale NA Sheet 1 of 1

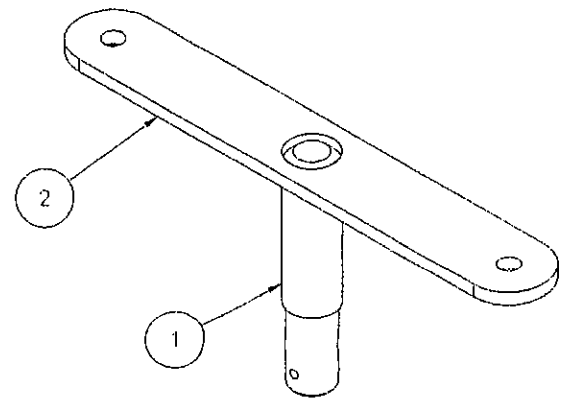




SECTION A-A

CERTS
 -
 PER AWS D1.1
 INSPECT 10% OF LOT
 ZINC
 -
 SEE WELD SYMBOLS

REVISIONS					
ZONE	REV	DESCRIPTION	ECN#	DATE	APPROVED
	A	ADDED DIMENSION	E3830	4/23/03	S. BARWICK
	B	ADDED MT \ PT WELD CALLOUT	E4101	1/19/04	N. HANSEN



BY: DRN. D. UDY		DATE: 11/20/00		S & S Power Inc. 300 West 2500 North, Logan, UT 84341 Ph. (435)752-1907	
CHK. E. SCHIESS		01/04/01		WELDMENT, CABLE PIVOT (FH)	
APPV. L. ALLEN		01/04/01			
UNLESS OTHERWISE SPECIFIED		TOLERANCES		SIZE B	DRAWING NUMBER 002278.DWG
DRAWING SCALE: 1:1		TOLERANCES		PART NO. 002278	
DIMENSIONS: 1/16 (0.0625) 1/8 (0.125) 3/16 (0.1875) 1/4 (0.25) 3/8 (0.375) 1/2 (0.5) 5/8 (0.625) 3/4 (0.75) 7/8 (0.875) 1 (1.0) 1 1/8 (1.125) 1 1/4 (1.25) 1 3/4 (1.5) 2 (2.0)		TOLERANCES		Scale 1/4	
DIMENSIONS: 1/16 (0.0625) 1/8 (0.125) 3/16 (0.1875) 1/4 (0.25) 3/8 (0.375) 1/2 (0.5) 5/8 (0.625) 3/4 (0.75) 7/8 (0.875) 1 (1.0) 1 1/8 (1.125) 1 1/4 (1.25) 1 3/4 (1.5) 2 (2.0)		TOLERANCES		Sheet 1 of 1	



FROG HOPPER™ / RODEO RIDER™

Preventative Maintenance / NDT Schedule

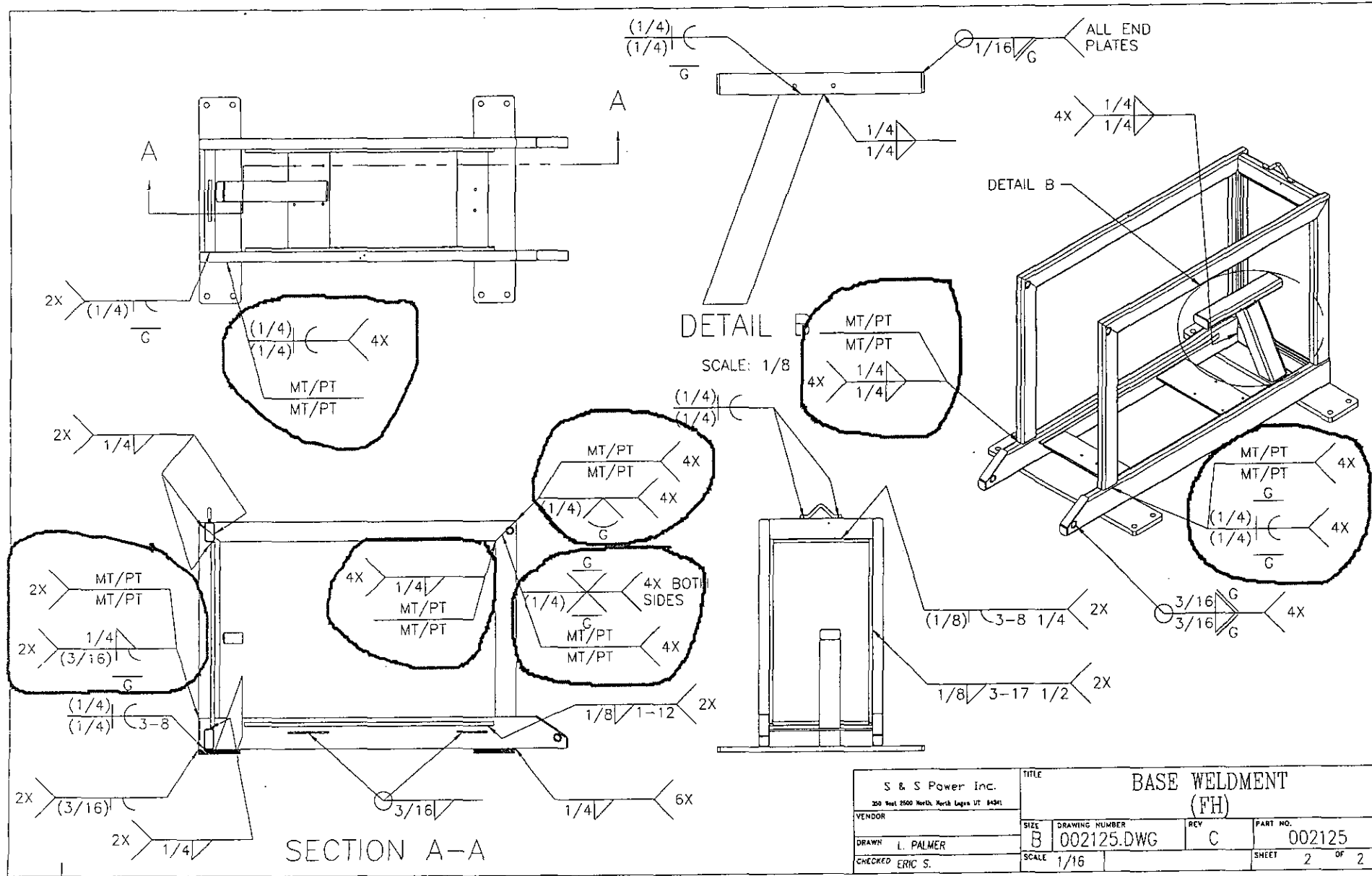
<u>Item</u>	<u>Required Action</u>
Wire Rope	Replace Annually
Oil Filter	Replace First 50 hour interval and Every 250 hours thereafter
Hydraulic Hose	Replace every 3 years
Electrical Control Relays (Up, Slowdown, Down Valve)	Replace Annually
NDT Boom and Base Welds	
(Refer to drawings F-FRG-BOO-W-2, and 002125	Every 3 years
Bolt mount plate at frame attachment location.	
Tube steel frame at all corners and joints.	
Base bolt mount plates at connection to boom sides.	
Upper boom attach brackets at connection to boom sides.	
Lower cylinder mount	
Mount block of stationary sheave	
Cart trolley joints	
Seat boom attachment to trolley	
Rocker arm attachment	

(Pre 2004 models Visual Inspection is required. Mag-particle is suggested. Post 2003 models Mag-particle is required.)

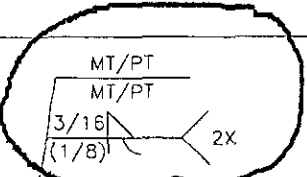
SUGGESTED ACTION ITEM

<u>Item</u>	<u>Suggested Action</u>
Sheave Bearing	Replace Annually
Down Valve	Replace every 3 years
Hydraulic Cylinder Rebuild or Replace	Every 50,000 cycles
Hydraulic Accumulators rebuild or replace	Annually or 30,000 cycles
Cart Wheels	Replace Annually
Oil change	Replace Annually

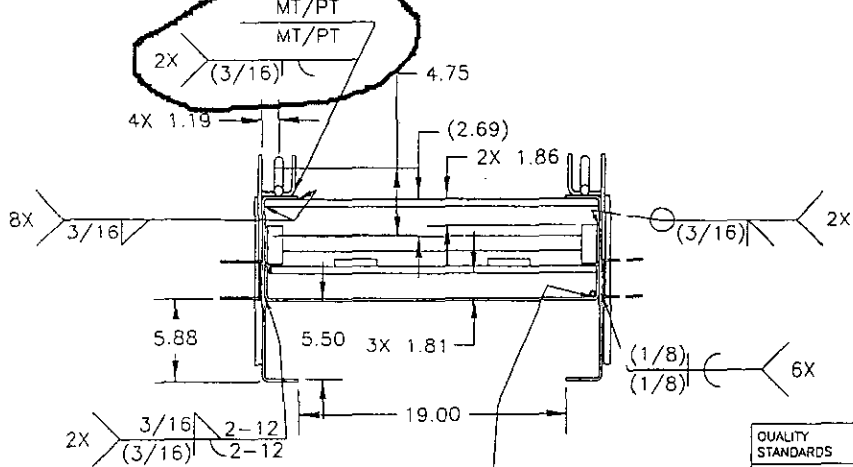
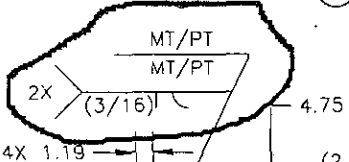
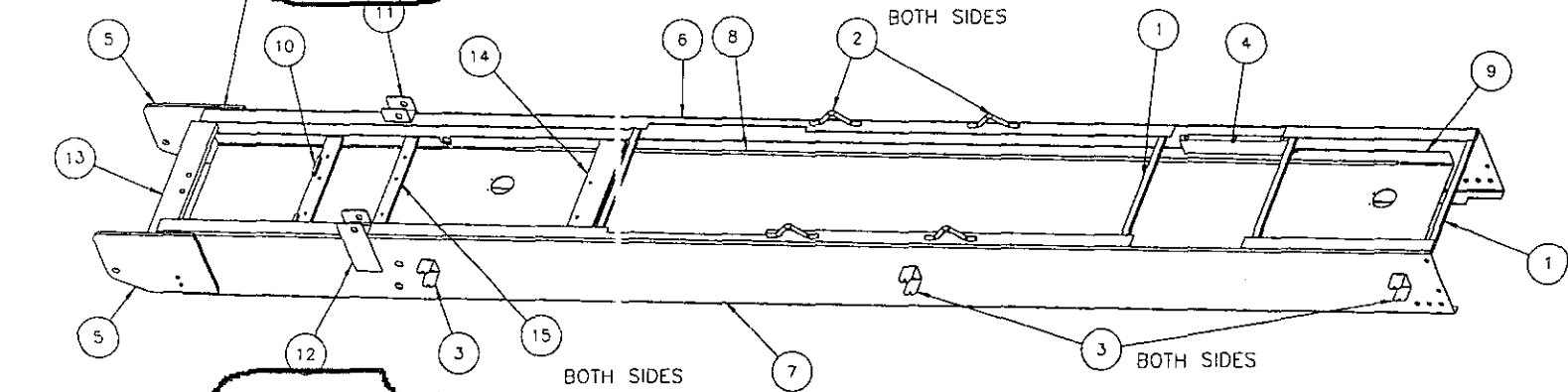
NOTE: Items included in the Suggested Action item list are not Safety Critical. They are only here to eliminate down time for repairs. They are suggestions only! S&S Power does not require the replacement of these items. We mention these items only to help the parks keep the rides up and running.



S & S Power Inc. 200 West 2500 North, North Logan UT 84301		TITLE BASE WELDMENT (FH)			
VENDOR	SIZE B	DRAWING NUMBER 002125.DWG	REV C	PART NO. 002125	
DRAWN L. PALMER	SCALE 1/16				SHEET 2 OF 2
CHECKED ERIC S.					



REVISIONS					
ZONE	REV	DESCRIPTION	ECN#	DATE	APPROVED
	B	ADDED CHANNEL WIDTH DIMENSION	E3828	4/21/03	K. MERRITT
	C	ADD WELD INSPECTION CALLOUT	E4108	1/27/04	K. MERRITT
	D	MOVE ITEM #14 TO 60.5" FROM 59.97" & ADD STRAIGHTNESS CALLOUT	E4816	2/24/05	K. MERRITT



VIEW B-B

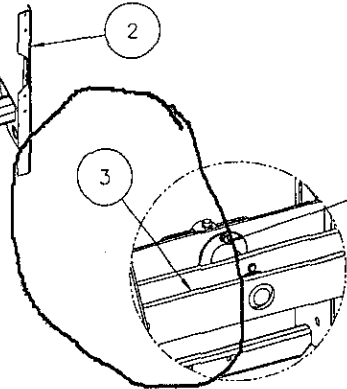
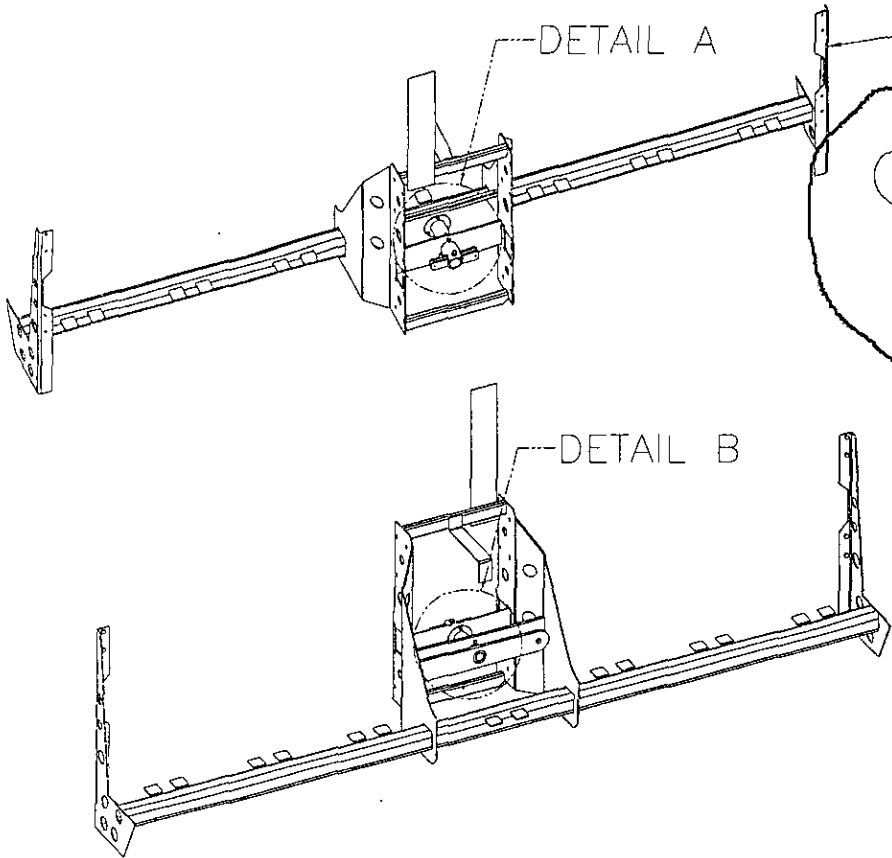
SCALE: 1/8

ITEM NO.	QTY	RECD.	PART DESCRIPTION	PART NO.
15	1		MOUNT, UPPER ACCUMULATOR (FH)	001183
14	1		MOUNT, UPPER CYLINDER (FH)	F-FRG-B00-J
13	1		LOWER CYLINDER MOUNT (FH)	SS1337
12	1		WELDMENT, BASE ATTACHMENT TAB (FH)	002179
11	1		WELDMENT, BASE ATTACHMENT TAB (FH)	002178
10	1		WELDMENT, LOWER ACCUMULATOR MOUNT (FH)	002175
9	1		CENTER CHANNEL (FH)	001181
8	1		CONDUIT, BOOM (FH)	002185
7	1		CHANNEL, SIDE (FH)	002184
6	1		CHANNEL, SIDE (FH)	002183
5	2		PLATE, BASE (FH)	002578
4	2		BLOCK, PULLEY HEAD MOUNTING, (FH)	990525
3	6		BRACKET, LIGHT (FH)	SS1361
2	4		LIFT HOOK (FH)	SS1362
1	4		BRACE (FH)	SS1338

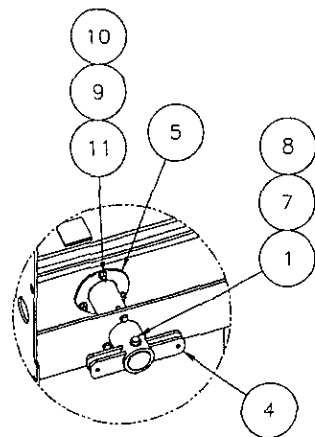
QUALITY STANDARDS	SPECIFICATIONS
MATERIAL	-
WELDING	AWS, CERTS
DIMENSIONAL	-
HEAT TREAT	-
COATING	PAINT AS PER JOB SPEC
MARKING	SERIAL NO. ON SS1337
MISC. TESTING	-

BY: DRN. C. MUNK	DATE: 1/30/02	<p style="text-align: center;">S & S Power Inc. 360 West 2500 North, Logan, UT 84341 Ph. (435)792-1807</p> <p style="text-align: center; font-size: 1.2em;">WELDMENT, BOOM (FH) (TUV)</p>											
CHK. D. UDY	DATE: 1/31/02												
APPV. E. SCHIESS	DATE: 1/31/02	<table border="1"> <tr> <td>SIZE</td> <td>DRAWING NUMBER</td> <td>PART NO.</td> </tr> <tr> <td>B</td> <td>F-FRG-B00-W-2</td> <td>F-FRG-B00-W-2</td> </tr> </table>	SIZE	DRAWING NUMBER	PART NO.	B	F-FRG-B00-W-2	F-FRG-B00-W-2	<table border="1"> <tr> <td>Scale</td> <td>NA</td> </tr> <tr> <td>Sheet</td> <td>1 of 2</td> </tr> </table>	Scale	NA	Sheet	1 of 2
SIZE	DRAWING NUMBER	PART NO.											
B	F-FRG-B00-W-2	F-FRG-B00-W-2											
Scale	NA												
Sheet	1 of 2												

REVISIONS					
ZONE	REV	DESCRIPTION	ECN#	DATE	APPROVED



DETAIL B
SCALE: 1/8



DETAIL A
SCALE: 1/8

See Drawing

11	6	NYLON INSERT LOCKNUT, 1/4-20 UNC	NLN-250C
10	12	FLAT WASHER, SAE, 1/4, ZINC	FLWSAE-250ZC
9	6	HEX HEAD CAP SCREW, 1/4-20 UNC X 1 1/4, ZINC, GR5	HHCS-250CX1250ZC
8	1	NYLON INSERT LOCKNUT, 3/8-16 UNC	NLN-375C
7	2	FLAT WASHER, SAE, 3/8, ZINC	FLWSAE-375ZC
6	1	CABLE PIVOT BUSHING, BACK (FH)	991011
5	1	CABLE PIVOT BUSHING, FRONT (FH)	991010
4	1	WELDMENT, CAM TRIGGER (FH)	002281
3	1	WELDMENT, CABLE PIVOT (FH)	002278
2	1	WELDMENT, CART (FH)	002268
1	1	HEX HEAD CAP SCREW, 3/8-16 UNC X 3, ZINC, GR5	HHCS-375CX3000ZC
ITEM NO.	QTY REQ.	PART DESCRIPTION	PART NO.

BY	DATE
DRN. D. UDY	11/16/00
CHK. E. SCHIESS	01/04/01
APPV. L. ALLEN	01/04/01

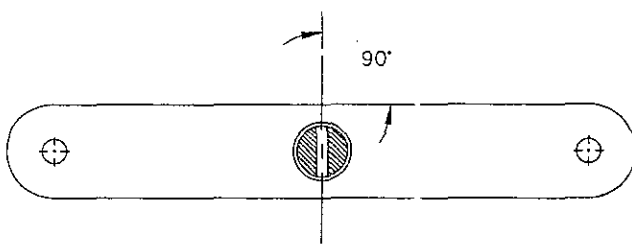
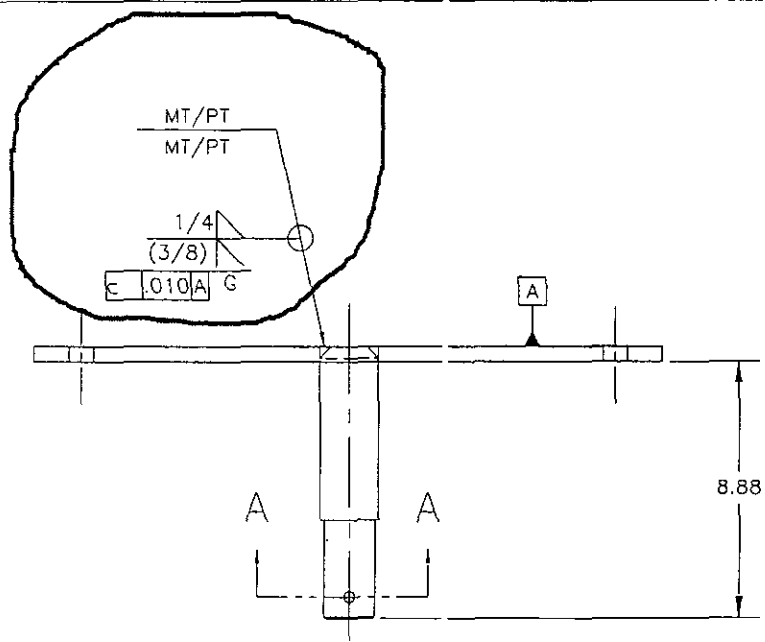
S & S Power Inc.
350 West 2500 North Logan, UT 84341
Ph. (435)752-1887

**ASSEMBLY, CART WELDMENT
AND CAM TRIGGER (FH)**

MACHINING TOLERANCES	FABRICATED
2000psi UNLESS OTHERWISE SPECIFIED	2000psi UNLESS OTHERWISE SPECIFIED
2000psi UNLESS OTHERWISE SPECIFIED	2000psi UNLESS OTHERWISE SPECIFIED
2000psi UNLESS OTHERWISE SPECIFIED	2000psi UNLESS OTHERWISE SPECIFIED
2000psi UNLESS OTHERWISE SPECIFIED	2000psi UNLESS OTHERWISE SPECIFIED
2000psi UNLESS OTHERWISE SPECIFIED	2000psi UNLESS OTHERWISE SPECIFIED
2000psi UNLESS OTHERWISE SPECIFIED	2000psi UNLESS OTHERWISE SPECIFIED
2000psi UNLESS OTHERWISE SPECIFIED	2000psi UNLESS OTHERWISE SPECIFIED
2000psi UNLESS OTHERWISE SPECIFIED	2000psi UNLESS OTHERWISE SPECIFIED
2000psi UNLESS OTHERWISE SPECIFIED	2000psi UNLESS OTHERWISE SPECIFIED

SIZE	DRAWING NUMBER	PART NO.
B	002284.DWC	002284
Scale NA	Sheet 1	of 1

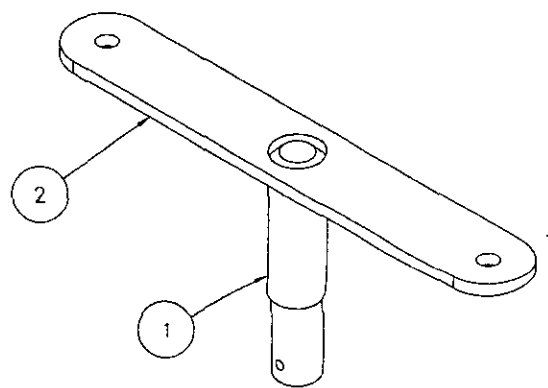




SECTION A--A

CERTS
 -
 PER AWS D1.1
 INSPECT 10% OF LOT
 ZINC
 -
 SEE WELD SYMBOLS

REVISIONS					
ZONE	REV	DESCRIPTION	ECN#	DATE	APPROVED
	A	ADDED DIMENSION	E3830	4/23/03	S. BARWICK
	B	ADDED MT \ PT WELD CALLOUT	E4101	1/19/04	N. HANSEN



BY	DATE:
DRN. D. UOY	11/20/00
CHK. E. SCHIESS	01/04/01
APPV. L. ALLEN	01/04/01

S & S Power Inc. 350 West 2500 North Logan, UT 84301 Ph. (435)782-1887	
WELDMENT, CABLE PIVOT (FH)	
SIZE	DRAWING NUMBER
B	002278.DWG
PART NO.	002278

Scale 1/4

Sheet 1 of 1

