



TO: ALL ADULT COASTER OWNERS  
DATE: MAY 1996  
RE: MANUAL UPDATE

Enclosed is an addition to the current manual on your Coaster.  
Please add this page to all office and field copies of your manual.

(M)

## LAP BAR INSPECTION PROCEDURE

1. Raise lap bar.
2. Check lap bar hinge bolts and lock mechanism hinge bolts for looseness or broken bolts.
3. Check lap bar air cylinder attachment pins for security and cotter pins.
4. Check lap bar arm for cracks.
5. Check that the lap bar foam is centered and in good shape.
6. Lift lap bar manual release.
7. Push down lap bar. Lap bar must ratchet down and lock at each detent.
8. Activate air unlocking system. **NOTE:** All bars should raise.
9. Turn off air unlocking system.
10. Watch as the air is released that the seat manual release lever does not stick or operate in a jerky manner.
11. Check that air cylinder mechanism releases so that bar will lock.
12. Push down lap bar. Lap bar must ratchet down and lock at each detent.
13. Repeat for each seat.

## LAP BAR LUBRICATION

Weekly

Oil all hinge bolts.

Oil lock gear pivot bolts.

Oil air unlocking cylinder pivot pins.

Grease gear teeth.



WISDOM INDUSTRIES, INC



## COASTER BULLETIN

DATE: JULY 1996  
RIDE: ADULT COASTER CARS  
SUBJECT: FRONT CAR FRAME INSPECTION

Inspect the front car frame for cracks behind the front axle pivot.

### INSPECTION PROCEDURE

1. Roll front car to an area of the track where the frame can be viewed from underneath (usually backwards off the trailer).
2. Check the area indicated on the drawing for cracks.
3. If cracks are indicated, contact Wisdom Industries for information on repair and reinforcement of the car frame.
4. A reinforcement kit is available. Please contact Wisdom Industries and it will be sent out at no charge.

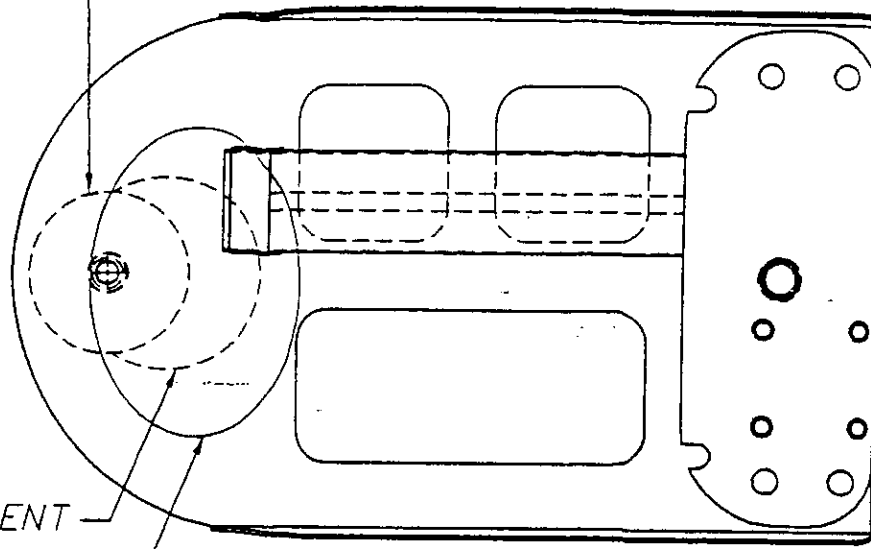
**Inspect the frame weekly until the reinforcement kit is installed.**

If you no longer own this ride, please contact us so we can update our records.

Thank you for your cooperation in this matter. If you have any questions about this bulletin, please feel free to contact us at 1-800-634-6097 or 1-970-522-7515.

ORIGINAL PLATE

REINFORCEMENT  
PLATE.



**BOTTOM VIEW**

INSPECT THIS AREA  
FOR CRACKS.

## **INSTALLATION OF REINFORCEMENT PLATE**

1. Remove car body from frame.
2. "V" out and weld cracks.
3. Weld reinforcement plate as shown above.
4. Cut out fiberglass in bottom of the car body to match reinforcement plate.
5. Reinstall car body.
6. Test run ride.



## COASTER BULLETIN

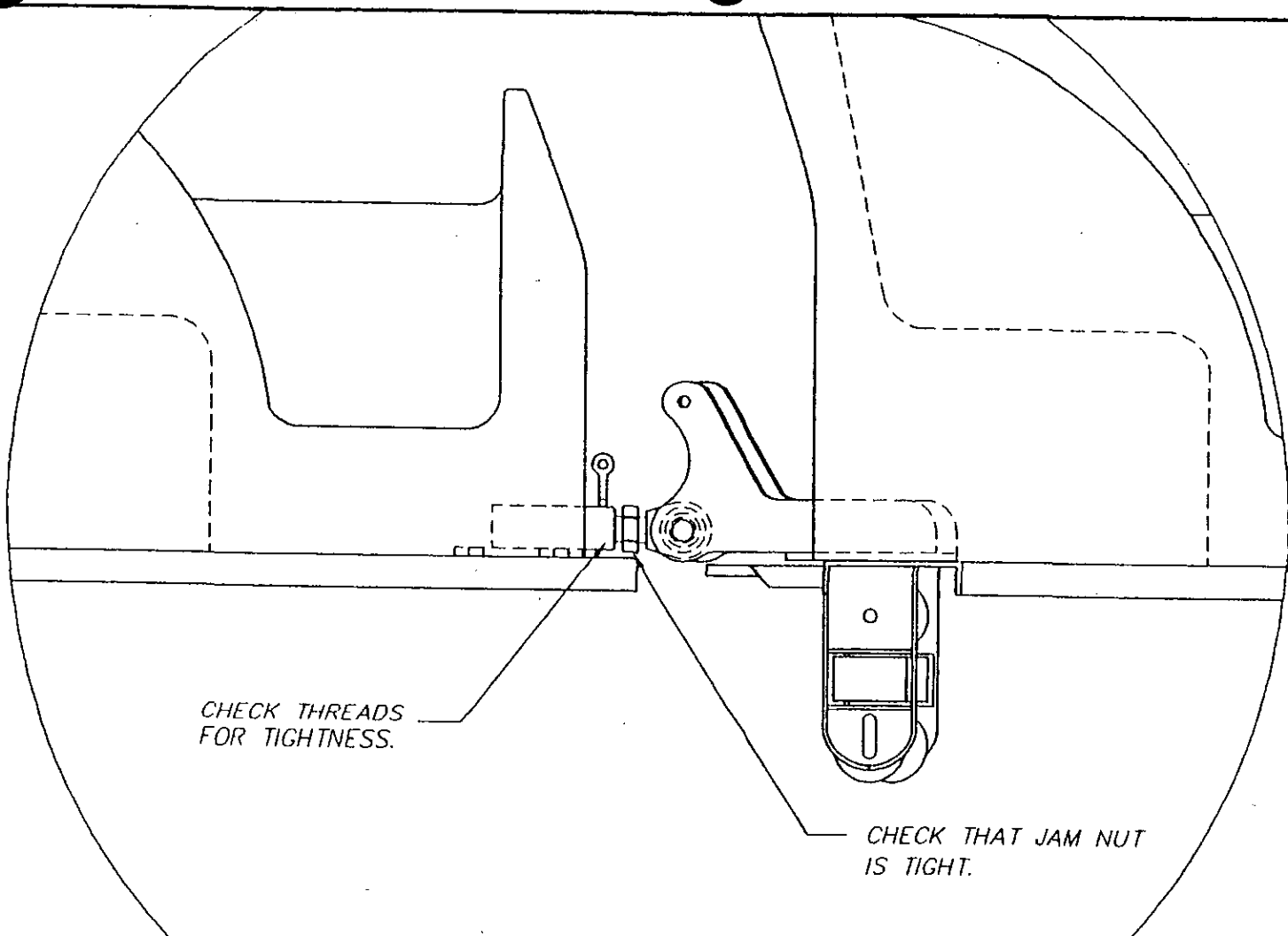
**DATE:** JULY 1996  
**RIDE:** ADULT COASTER CARS  
**SUBJECT:** ROD END COUPLERS

### ROD END COUPLER INSPECTION

1. Check that each rod end jam nut is tight.
2. If a rod end jam nut is loose, remove the connecting bolt attaching the rod end to the rear of the car.
3. Check the rod end for looseness in the threaded hole.
4. If the rod end does not feel loose in the hole, tighten the lock nut.
5. Reinstall the 1" bolt connecting the two cars with a lock nut and tighten.
6. If the threads are loose, contact us for a replacement rod end and coupler.
7. All rod ends must have a jam nut.

If you no longer own this ride, please contact us so we can update our records.

Thank you for your cooperation in this matter. If you have any questions about this bulletin, please feel free to contact us at 1-800-634-6097 or 1-970-522-7515.



CHECK THREADS  
FOR TIGHTNESS.

CHECK THAT JAM NUT  
IS TIGHT.



WISDOM  
INDUSTRIES

Merino, CO 80741

SCALE: NTS	APPROVED BY:	DRAWN BY: JLC
DATE: 7-19-96		REVISED
DESCRIPTION CAR HITCH		
EQUIPMENT: COASTERS	DRAWING NUMBER DWG #	



**WISDOM  
INDUSTRIES, Ltd.**

# SERVICE BULLETIN

**DATE: FEBRUARY 25, 2004**

**RIDE: ADULT COASTER CARS** *Orient express, Tiger terror, Dragon*

**SUBJECT: WHEEL BOGGY BRACKETS**

*Wagon*

**COMPLIANCE DATE: IMMEDIATE**

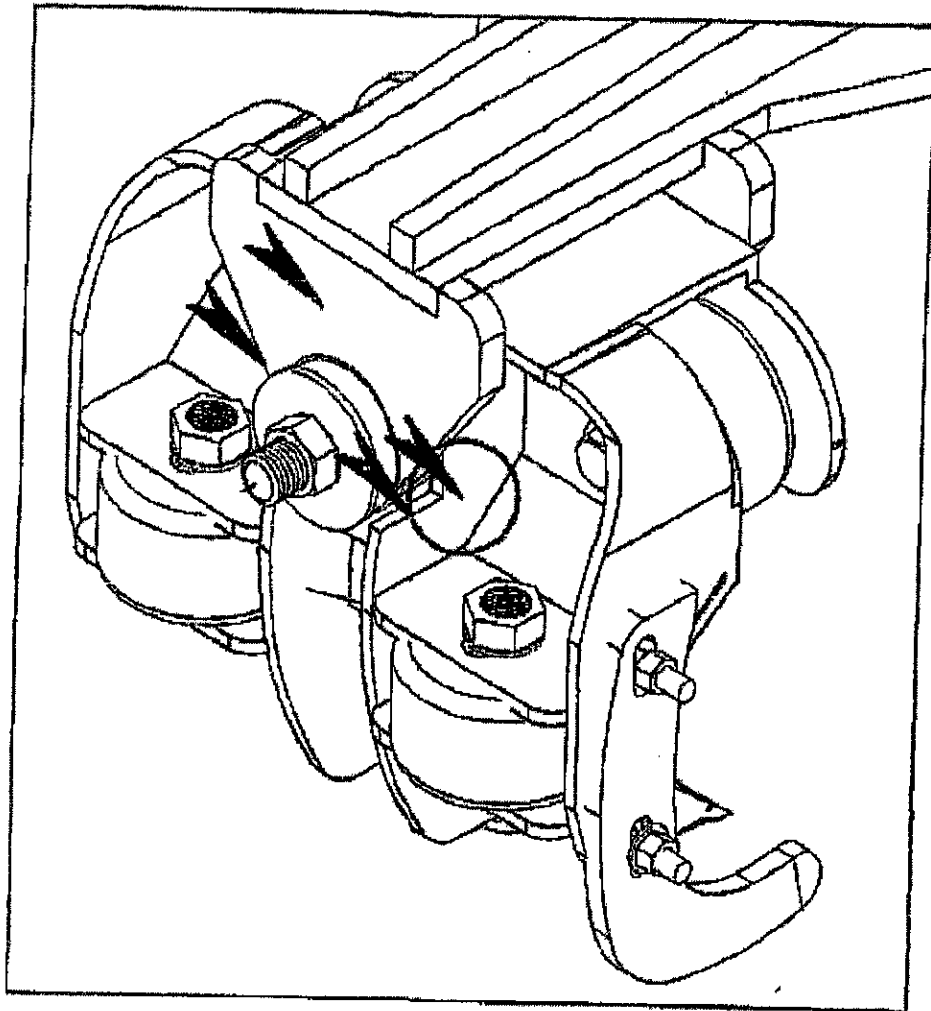
❖ **CRACKING HAS BEEN INDICATED ON 2 WHEEL BOGGY ASSEMBLIES ON ONE RIDE. INSPECT THE INDICATED AREA AND REPAIR IF NEEDED. FAILURE OF THE BOGGY IN THIS AREA MAY CAUSE INJURY.**

1. Inspect the area indicated on the attached drawing.
2. Inspect both inner main boggy plates.
3. Use visual and dye penetrant or magnetic flux
4. If a crack is found, V out the crack and weld with 7018 rod.
5. Add 1/4" doubler plate and weld the perimeter of the doubler plate with 7018 rod.
6. Check adjustment of wheels.
  - **NOTE:** Adjusting side and bottom wheels in the station may be causing the cracking. Adjust wheels on curve only.

Contact Wisdom Industries for Repair instructions or doubler plates.



If you have any further questions, please call Wisdom Industries. Please contact Wisdom if cracks are found so that we may evaluate if further action is needed.



INSPECT EVERY 6 MONTHS (NORMAL USAGE):

1. REMOVE LOOSE PAINT AND GREASE THAT WOULD OBSTRUCT VIEW.
2. INSPECT FOR CRACKS ON THE WHEEL BRACKET ASSEMBLY IN THE AREA INDICATED (2 PLACES EACH BOGGY) AND THE AXLE ASSEMBLY.
3. PAINT BARE METAL AND GREASE AS REQUIRED.
4. REPAIR ACCORDING TO INSTRUCTION AS NEEDED.



**WISDOM INDUSTRIES** Merino, CO 80741

APPROVED BY:

DESCRIPTION:

INSPECTION OF WHEEL BRACKET ASSEMBLY

SCALE: QUARTER

DATE: 02/24/04

EQUIPMENT:

COASTERS/CHINA/DRAGON

DRAWN BY:

JJR

DRAWING NUMBER:

9C 025