



WISDOM INDUSTRIES, INC



HIMALAYA BULLETIN

DATE: MARCH 1997
RIDE: FAMILY HIMALAYA AND SILVER STREAK HIMALAYA
SUBJECT: WHEEL ISOLATION BUSHINGS

Monthly inspect the neoprene isolation bushings which attach the sweep wheel bracket to the sweep.

Review the drawing on the back of this bulletin to see the area indicated. Replace as necessary. Weekly inspect sweep wheel bolts for missing bolts.

INSPECTION INSTRUCTIONS NEOPRENE ISOLATION BUSHINGS

****DANGER****

Lock out electrical before entering the center area.

SILVER STREAK HIMALAYA

During Set up:

1. After removing sweep from rack, turn sweep upside down.
2. Inspect the bushings.
3. Look for split neoprene, deformed safety washers, loose or missing bolts.

Perform on a monthly basis for bushing.

Perform on a weekly basis for bolts. (No disassembly required).

FAMILY HIMALAYA

1. Remove fiberglass pylon from between the cars.
2. Move the car to a spot on the track where the bushings and bolts can be viewed from underneath.

****DANGER****

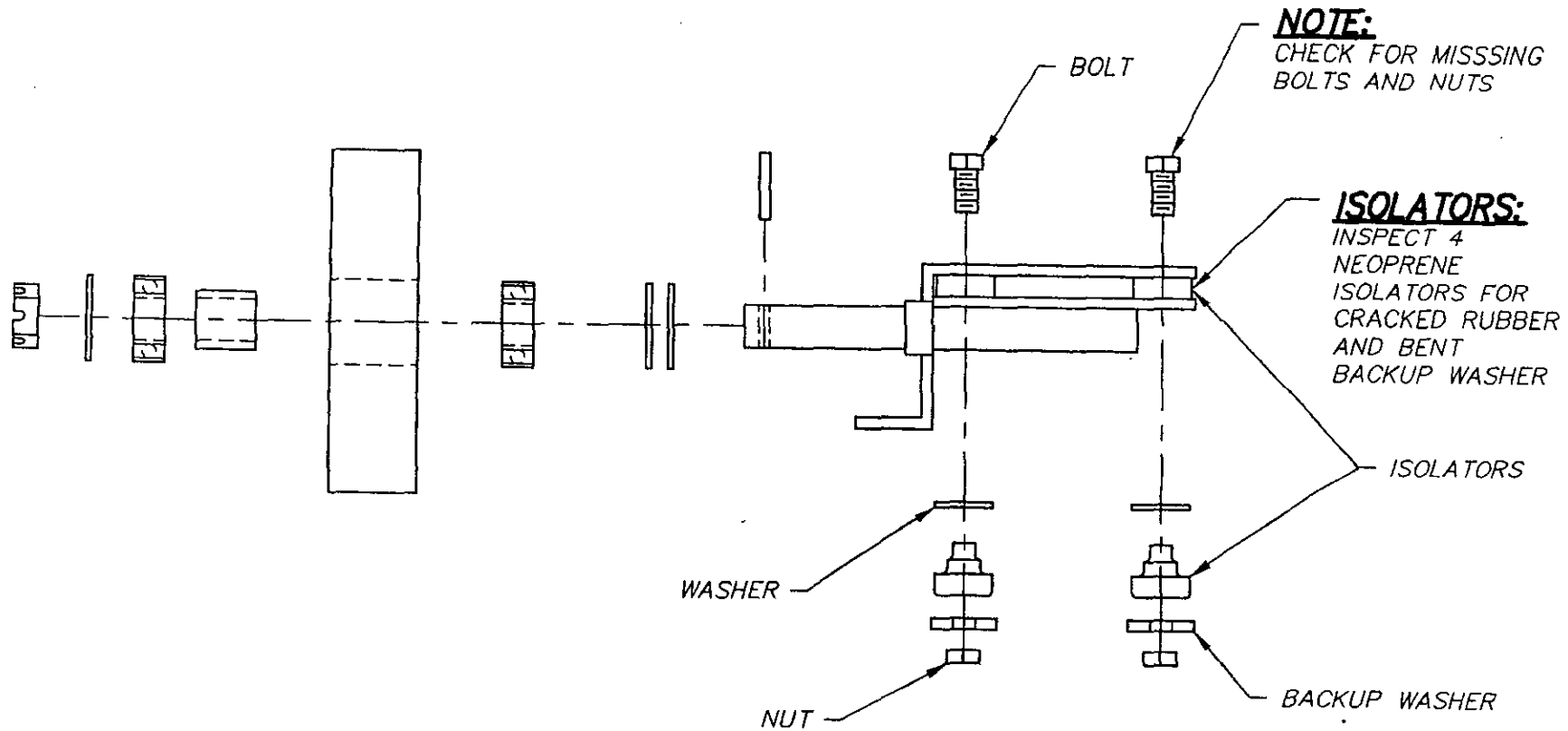
Lock out electrical before entering the center area.

3. From underneath the sweep, inspect the bushings.
4. Look for split neoprene, deformed safety washers, loose or missing bolts.
5. Reinstall the pylon.
6. Move the ride to the next sweep to be inspected and repeat steps 1-5.

Perform on a monthly basis for bushing.

Perform on a weekly basis for bolts. (Can be performed from above sweep).

If you no longer own this ride, please contact us so we can update our records. Thank you for your cooperation in this matter. If you have any questions about this bulletin, please feel free to contact us at 1-800-634-6097 or 1-970-522-7515.



 **WISDOM INDUSTRIES** Merino, CO 80741

SCALE: N.T.S.	APPROVED BY:	DRAWN BY: MDF
DATE: 03-19-97		REVISED

DESCRIPTION
AXLE ASSEMBLY CHECKLIST

EQUIPMENT: KIDDIE HIMALAYA/SILVER STREAK	DRAWING NUMBER 3KH-03
--	---------------------------------



**WISDOM
INDUSTRIES, Ltd.**

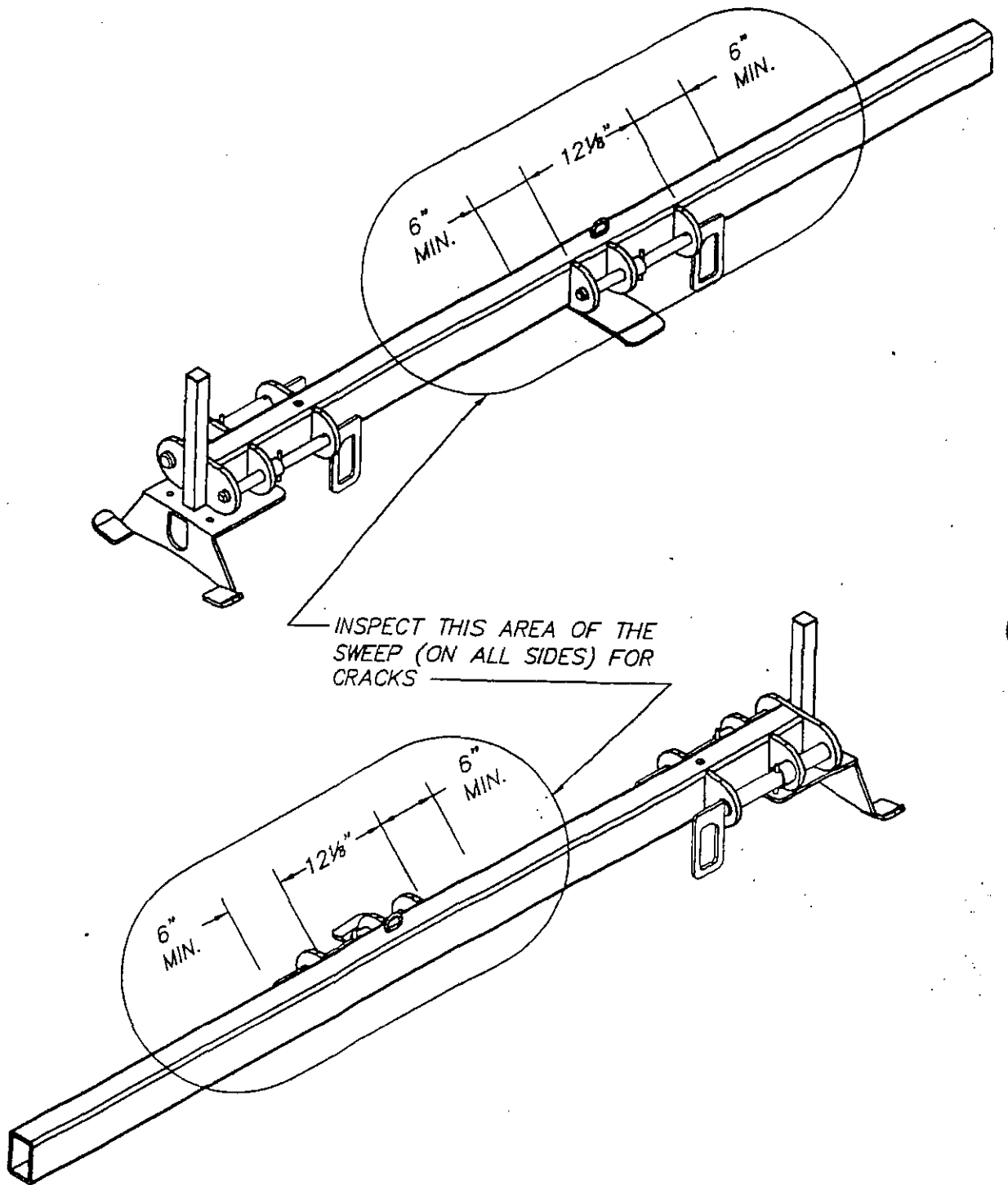
SERVICE BULLETIN

DATE: APRIL 22, 2002
RIDE: SILVER STREAK/ FAMILY HIMALAYA
SUBJECT: SWEEP INSPECTION (16 SWEEPS)
COMPLIANCE: MANDATORY
COMPLETION DATE: IMMEDIATELY

One Family Himalaya has experienced cracking on one sweep where the inside seat attachment is welded. Review the drawing on the reverse side and inspect for cracking around the sweep. If cracks are indicated contact Wisdom Industries at 800-634-6907 for repair or replacement of the sweep before continuing operation.

TO INSPECT FOR CRACKS

1. Clean area on each sweep where the inside seat attachment is welded. All 4 sides of sweep. (See Drawing)
2. Visually inspect 6" each side of the attachment for cracks on all 4 sides of the tubes.
3. Follow the visual inspection with magnaflex or dye penetrant.
4. If cracks are found contact Wisdom Industries before operating the ride.
5. Repeat for the other 15 sweeps.
6. Repeat inspection on a annual basis



WISDOM INDUSTRIES Merino, CO 80741

APPROVED BY:

DESCRIPTION

SWEEP INSPECTION

SCALE: 3/4" = 1'-0"

DATE: 04/22/02

EQUIPMENT:

KIDDIE HIMALAYA

DRAWN BY:

JJR

DRAWING NUMBER:

4H 105