



**WMI
INDUSTRIES, LTD.**

3-31-93.

Re: Gee Whiz Handle Bar Air System

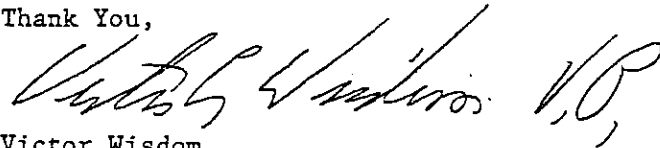
As an added safety feature on our Gee Whiz we are adding a pressure switch which will shut down the ride in the event of a loss of air pressure to our handle bar hold-down system.

The components necessary for this addition will be provided by WMI.

For a drawing and shipment of the components, please contact us with an address where these parts can reach you.

Please contact Steve Conover at 1-800-634-6097.

Thank You,



Victor Wisdom



WISDOM INDUSTRIES, INC



SERVICE BULLETIN

Date: May 21, 1993

Ride: GEE WIZZ

Subject: HANDLEBAR INSPECTION AND REINFORCEMENT.

INSPECTION DATE: IMMEDIATE

COMPLIANCE DATE: 5/28/93

INSTRUCTIONS

The following inspection and modification of all handlebars on the GEE WIZZ that have the bracket shaped like the top drawing on the back side of this page must be reinforced:

Inspect the area marked for cracks.

If cracks are found reweld the crack before continued operation of the ride.

Installing the reinforcement plate.

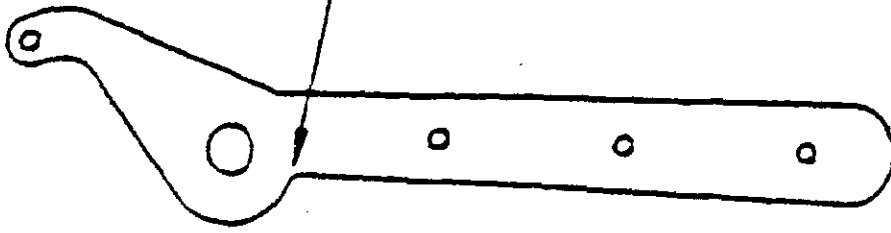
Eight plates are required for each ride. One plate is welded to each lifting arm.

Look at the enclosed drawing for the proper location and welding of the plate.

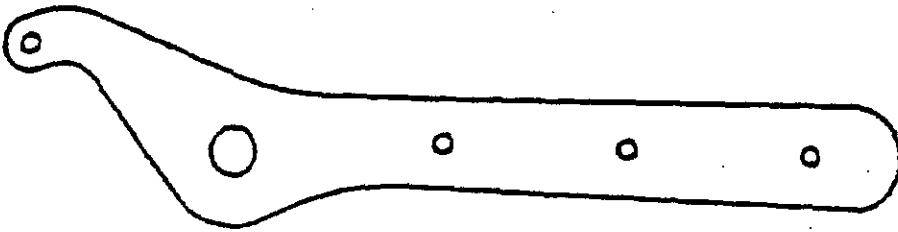
If your arms are shaped like the lower drawing then there is no action required at this time other than the daily preoperating inspection of the handlebars.

If cracks are found on the arms like the lower drawing contact Wisdom Industries immediately.

INSPECT THIS AREA
FOR CRACKS.

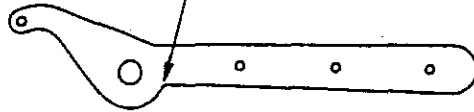


IF PIVOT PLATE LOOKS LIKE
THIS ONE YOU NEED TO
WELD REINFORCEMENT
PLATE ON IT.

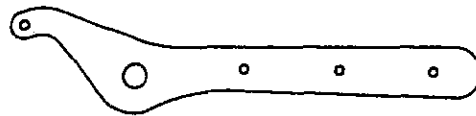


IF PIVOT PLATE LOOKS LIKE THIS
ONE REINFORCEMENT PLATE MAY
NOT BE NEEDED; CHECK DAILY.

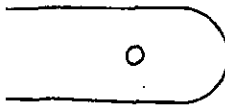
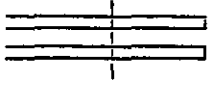
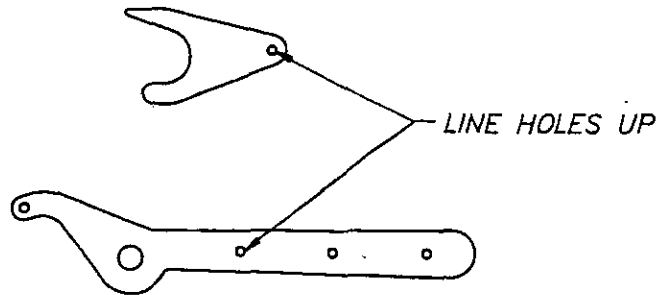
INSPECT THIS AREA FOR CRACKS.




IF PIVOT PLATE LOOKS LIKE THIS ONE YOU NEED TO WELD REINFORCEMENT PLATE ON IT.

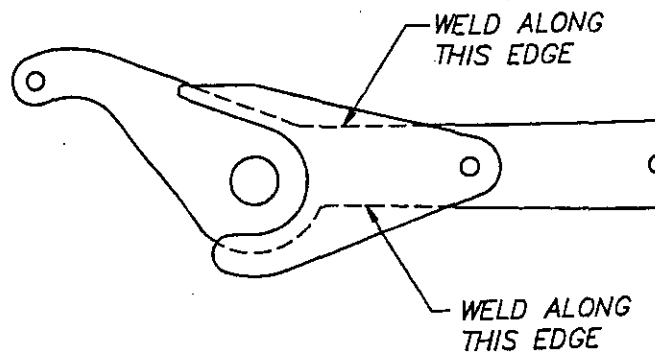
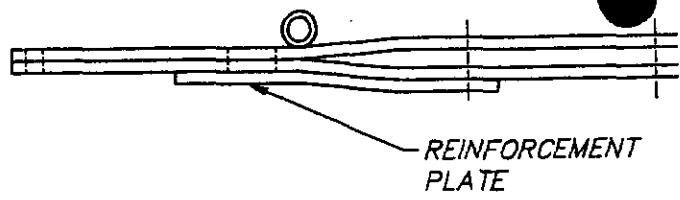
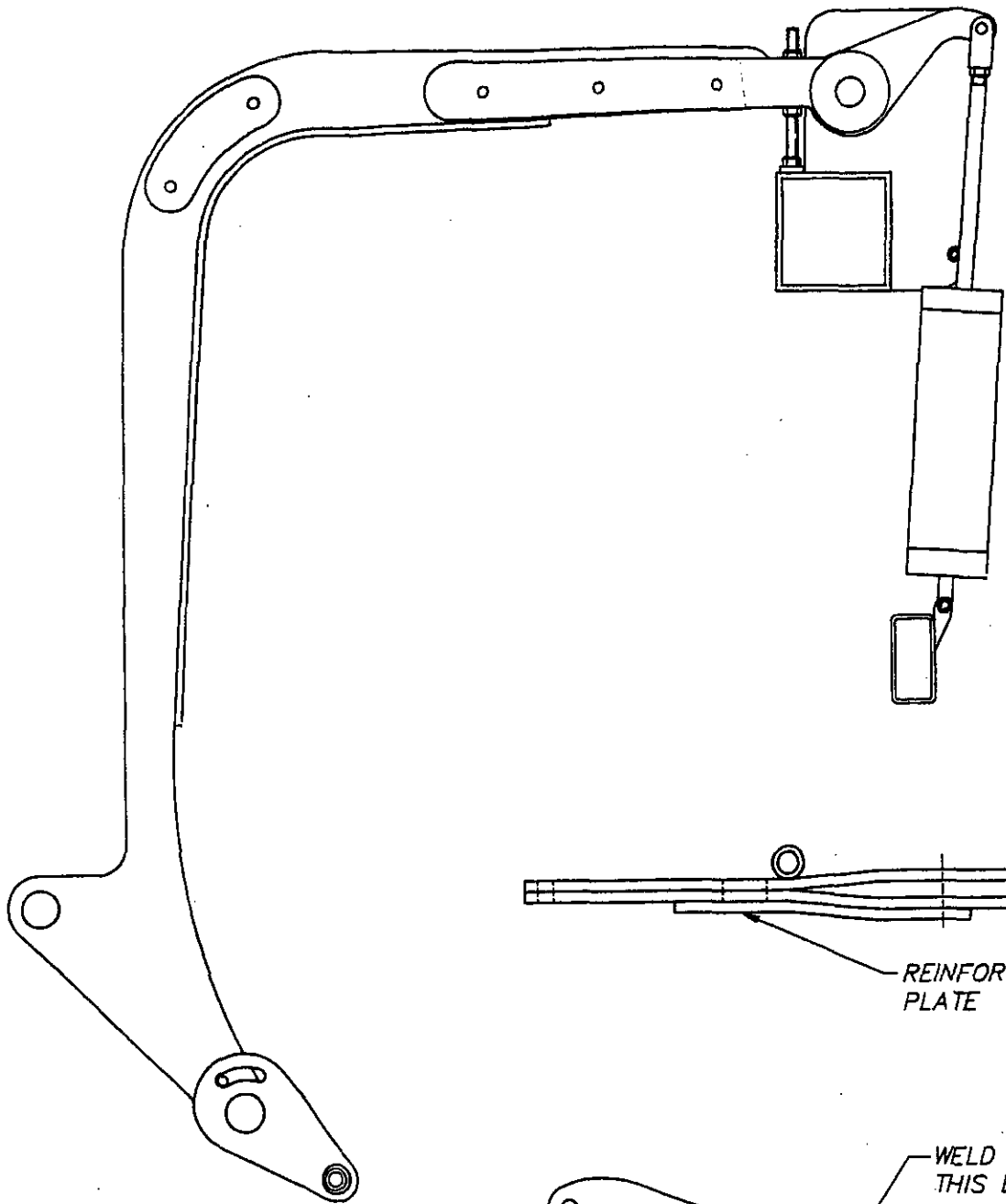


IF PIVOT PLATE LOOKS LIKE THIS ONE REINFORCEMENT PLATE MAY NOT BE NEEDED; CHECK DAILY.



PLATE

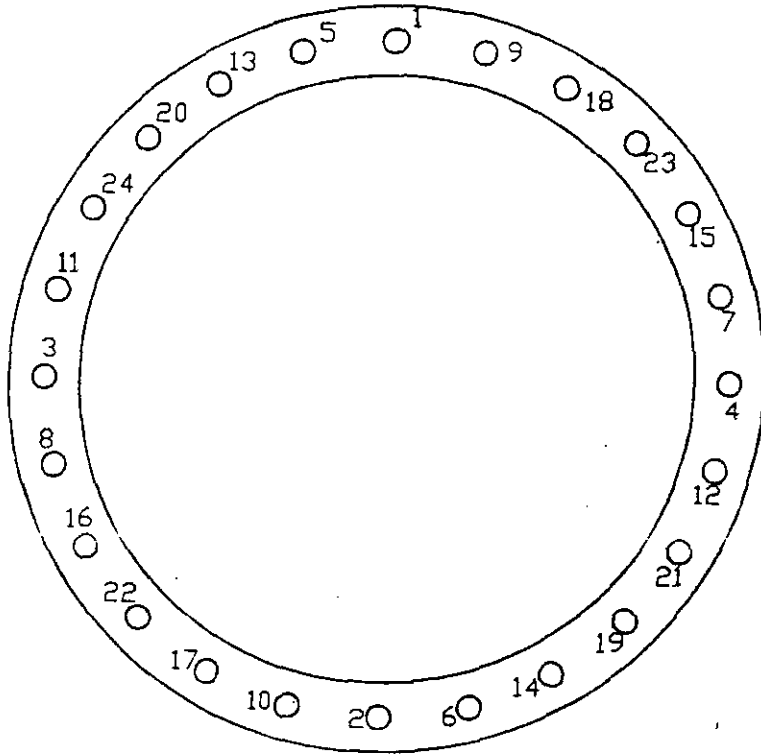
 WISDOM INDUSTRIES		MAY 21 1993	
Merino, CO 80741			
SCALE: 1"=1'-0"	APPROVED BY: <i>Randy Cracker</i>		DRAWN BY: MFK
DATE: 5-21-93	REVISED		
DESCRIPTION HANDLEBAR INSPECTION			
EQUIPMENT: GEE WIZZ		DRAWING NUMBER HANDLE	



PIVOT PLATE W/ RE
SCALE 3"=1'-0"


*BOLT TIGHTNING SEQUENCE 1/2" X 1 1/2" HEX
HEAD OUTER BOLTS*

*TORQUE TO 40 LBS. THE FIRST TIME AROUND
80 LBS THE SECOND TIME AROUND
110 THE THIRD TIME AROUND*



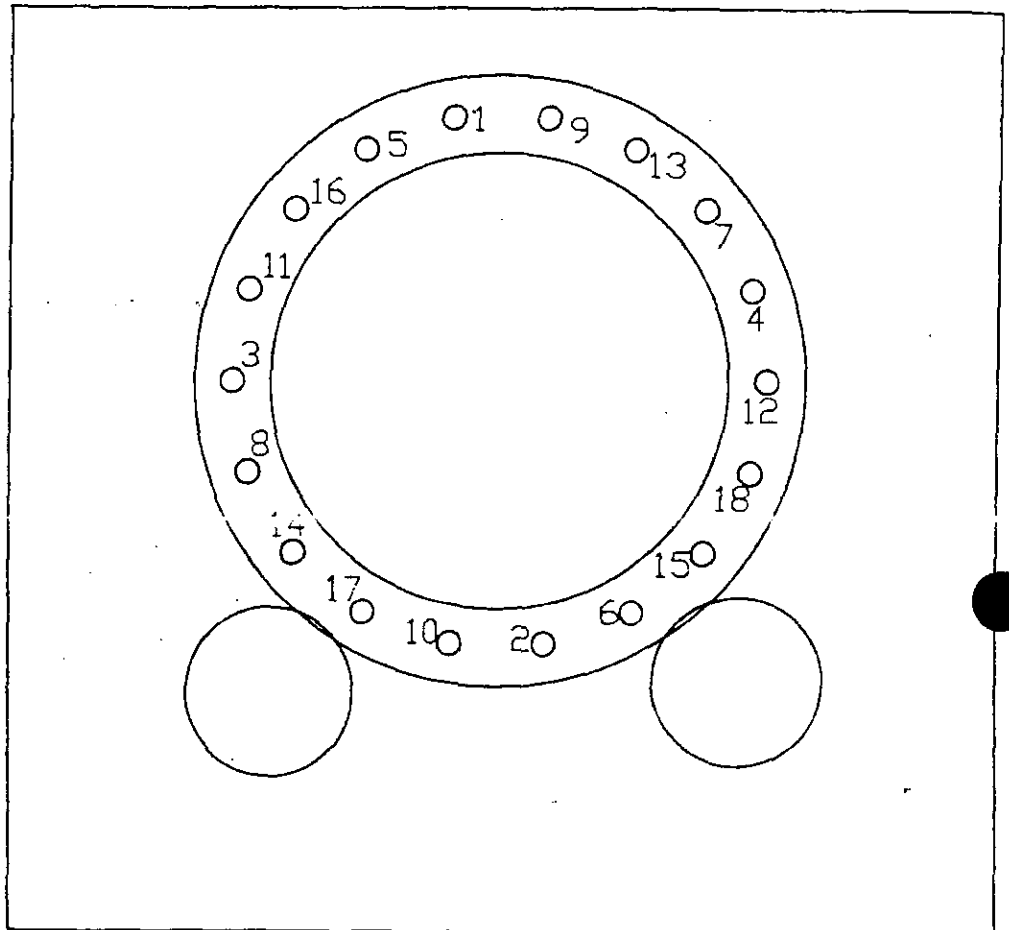
NOTES:

1. USE RED LOCK TIGHT WHEN INSTALLING ALL BOLTS AND NUTS.
2. TORQUE LOCK NUTS TO 150LBS..
3. BOLTS USED HAVE BEEN GRADE 8 OR BETTER.
4. A HOLE WILL HAVE TO BE DRILLED IN MAIN ARM BEARING PLATE FOR ACCESS TO INNER BOLTS. (SEE DRAWING)

 WISDOM INDUSTRIES Merino, CO 80741		
SCALE: N/A	APPROVED BY: OCT 05 1993	DRAWN BY: J.M.
DATE: 10-05-93		REVISED
DESCRIPTION BOLT TIGHTING SEQUENCE		
EQUIPMENT: GEE WIZZ	DRAWING NUMBER GWTORQUE	

BOLT TIGHTNING SEQUENCE INNER 5/8"
BEARING ALLEN HEAD BOLTS

TORQUE TO 50 LBS THE FIRST TIME AROUND
100 LBS THE SECOND TIME AROUND
150 THE THIRD TIME AROUND



BOLTS 1-2-3-4-5-7-8-9-11-12-13-16 ARE
5/8" X 3 1/2" GRADE 8 WITH LOCK NUTS

BOLTS 6-10-14-15-17-18 ARE 5/8" X 2 1/2"
GRADE 8 BOLTS. LONGER BOLTS WILL INTERFERE
WITH DRIVE MOTORS OR BRAKE

* Clean Threads
before installing bolts



WISDOM INDUSTRIES, INC.

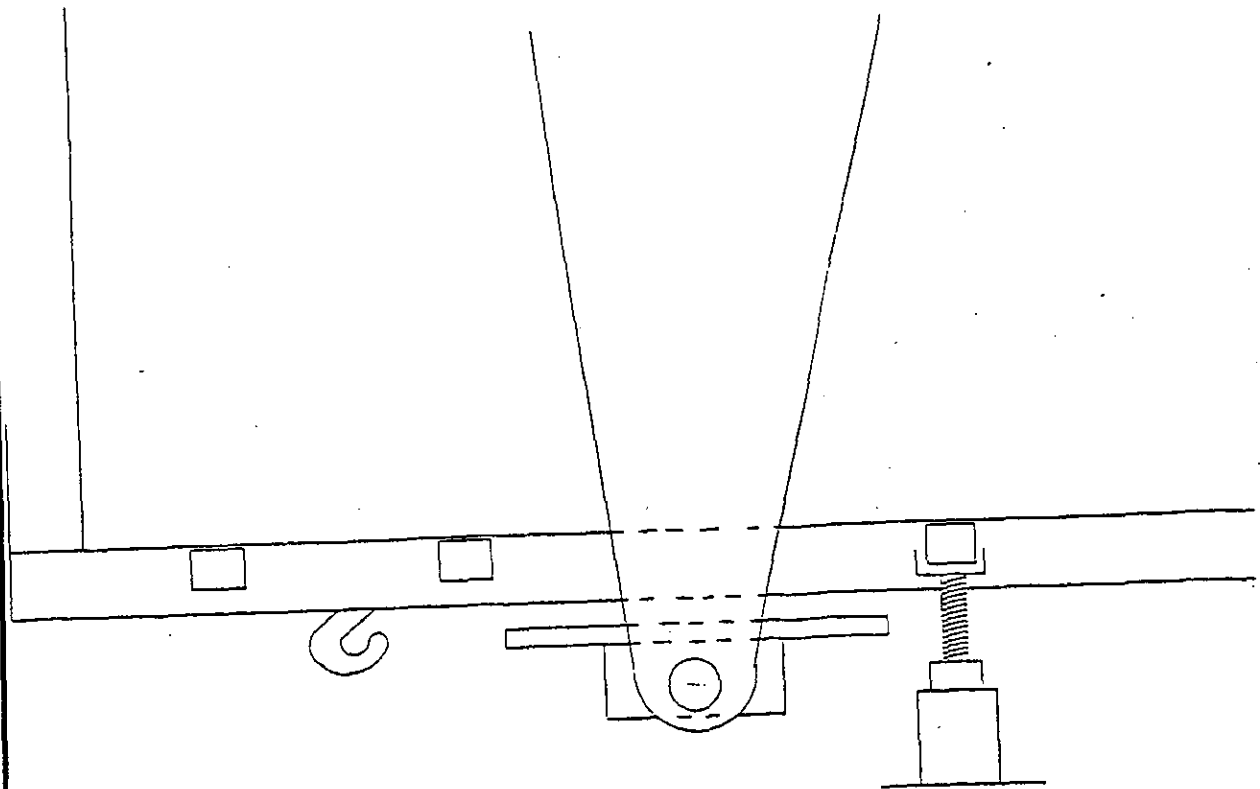


NOTICE

DATE: OCTOBER 1994
RIDE: GEE WIZZ
SUBJECT: SEAT TRANSPORT SUPPORT

The screwjacks that are used for trailer corner support during operation can be used to support the seat during transportation. It may be necessary to use a block under the stand to get the required height. Install screwjack and tighten before tightening the seat transport tumblers.

Locate the screwjacks under seat frame on one of the seat cross members as close to the main arm as possible. Locate the screwjack base on a trailer cross member. Four jacks are required. Remove before raising the seat to bolt the weights.

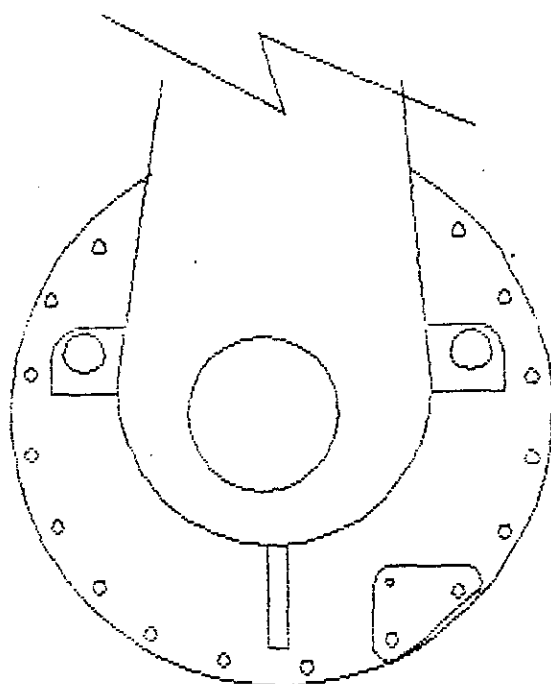


SEE WHIZ INNER BEARING BOLT ACCESS HOLE MODIFICATION

THESE BOLTS SHOULD BE REPLACED WITH 3 1/2" BOLTS EXCEPT THOSE DIRECTLY IN LINE WITH THE MOTORS OR BRAKE HOUSING. BOLTS SHOULD BE REMOVED ONE AT A TIME, THREADS CLEANED, NEW BOLTS WITH RED LOCK TIGHT INSTALLED. BOLTS SHOULD BE TORQUED TO 150 LBS. LOCK NUTS SHOULD BE INSTALLED ON THE 3 1/2" BOLTS AND TORQUED TO 150 LBS. ALSO.

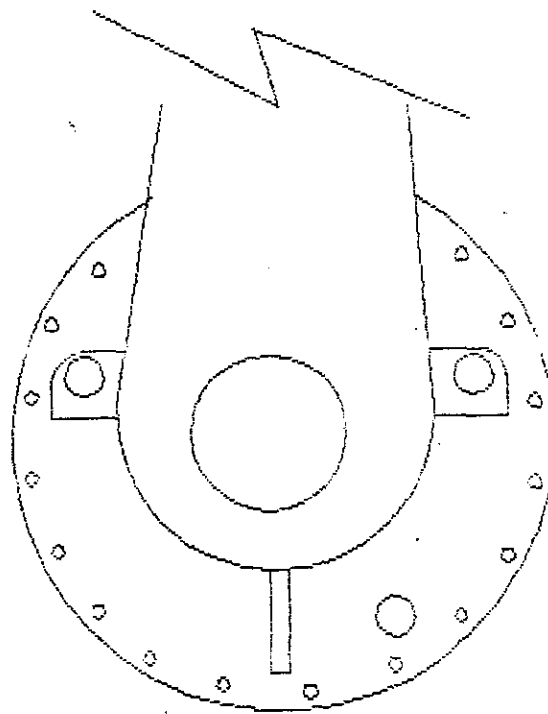
BOLT TORQUE SHOULD BE CHECKED WEEKLY. INNER BOLTS TO 150 LBS. OUTER BOLTS TO 110 LBS. IF ANY ARE FOUND LOOSE THEY SHOULD BE REMOVED, CLEANED, NEW LOCK TIGHT PUT ON, AND RETORQUED.

BOLTS USED MUST BE GRADE 8 AND BE STAMPED WITH MANUFACTURERS IDENTIFICATION.



MAIN ARM STRAIGHT UP
ALIGNMENT TOOL
CENTER PUNCH HOLE

NOTE: CHECK HOW MAGNETIC
DRILL WILL FIT BEST TO
REACH HOLE TO BE DRILLED



USE 1 3/8" BROACH
BLOW ALL DRILL SHAVINGS
OUT FROM THE BACK CAVITY
BEHIND THE BEARING

IF AIR IS NOT AVAILABLE
USE MAGNET TO REMOVE
SHAVINGS



WISDOM INDUSTRIES, INC



GEE WIZZ BULLETIN

DATE: JUNE 1995
RIDE: GEE WIZZ
SUBJECT: GUSSETS ON COUNTER-WEIGHTS SIDE EARS

Due to the potential that the GEE WIZZ can be operated with the counter-weight bolts loose, we have determined that it is necessary to install gussets on the hold down ear on the counter-weight to prevent cracking of the welds.

Prior to installing the gussets, check the indicated area for cracks and reweld if necessary.

The enclosed drawing shows location and installation procedure. Contact us with the shipping address to ship the gusset plates if they are required.

Installation Instructions

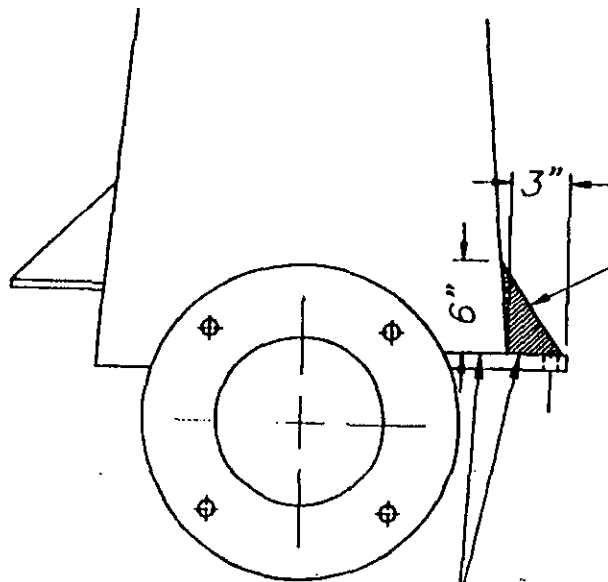
DANGER: Make sure no one is in the area of the counter-weight or seat when raising or lowering weights or car.

1. Lower weights and remove setup bolts.
2. Lower seat.
3. Inspect area on counter-weight ears marked on drawing for cracks.
4. Weld cracks if indicated.

WARNING: Put welder ground on the weight or damage to the main bearing will result.

5. Tack gussets on counter-weights as shown on drawing.
6. Raise seat and install bolts.
(Check for interference of gussets with bolts or ride components.)
7. Remove bolts and lower seat.
8. Weld gussets in place.
9. Set up ride and install bolts.
10. Test run ride before loading passengers.

Please contact us if you no longer own this ride in order for us to update our records. If you have any questions about this bulletin, please feel free to contact us at 1-800-634-6097 or 1-970-522-7515.



INSTALL
GUSSET
PLATES

INSPECT THIS AREA
FOR CRACKS
(3 SIDES).

ALIGN PLATE SO
THAT ENOUGH
CLEARANCE IS
LEFT FOR BOLT
HEAD.



WELD PLATE
FLUSH WITH
OUTSIDE OF
BOLT PLATE



WISDOM
INDUSTRIES

Merino, CO 80741

SCALE: 1" = 1'

APPROVED BY:

JUN 27 1995

DRAWN BY: JGK

DATE: 6-8-95

REVISED

DESCRIPTION

GUSSET INSTALLATION DETAIL

EQUIPMENT:

GEE WIZZ

DRAWING NUMBER



WISDOM INDUSTRIES, INC



GEE WIZZ BULLETIN

DATE: JUNE 1995
RIDE: GEE WIZZ
SUBJECT: INSPECTION ON LAP BAR ALUMINUM

Review the enclosed drawing and inspect the lap bars on the
GEE WIZZ in the indicated area for cracks.

**IF CRACKS ARE FOUND, IT IS REQUIRED THAT THOSE
AFFECTED SEATS ARE NOT USED UNTIL THEY ARE REPAIRED.**

If cracks are found, notify Wisdom Industries for repair procedures.


Please contact us if you no longer own this ride in order for us to update our records. If you have any questions about this bulletin, please feel free to contact us at 1-800-634-6097 or 1-970-522-7515.



HANDLEBAR WEB

LAP BAR MAY
INCLUDE A
LARGER RADIUS.

INSPECT WHERE FLAT STRAP
ENDS FOR CRACKS INTO
HANDLEBAR WEB. STRAP
MAY END LOWER THAN
DRAWING SHOWS.

 WISDOM INDUSTRIES		Merino, CO 80741	
SCALE: N.T.S.	APPROVED BY:		DRAWN BY: MFK
DATE: 06-20-95			REVISED
DESCRIPTION HANDLEBAR INSPECTION			
EQUIPMENT: GEE WIZZ		DRAWING NUMBER HANDLE1	