



WMI INDUSTRIES, LTD.

RE:GRAVITRON DOOR OPENER.

Compliance: Mandatory

Due to reports of door openers on the Gravitron not being maintained it is mandatory that a door catch be installed on all Gravitrons. There are two types of catches that have been fabricated and installed on most Gravitrons.

The original type is a flip up finger that hangs from the sweep. As the door is raised past this finger it drops down under the door. An electric solenoid pulls the finger up when the door is lowered. This type of door catch is acceptable as long as the operator raises the door past this catch each time the door is opened. The operator must be sure that there is no one standing under the door when he lowers it.

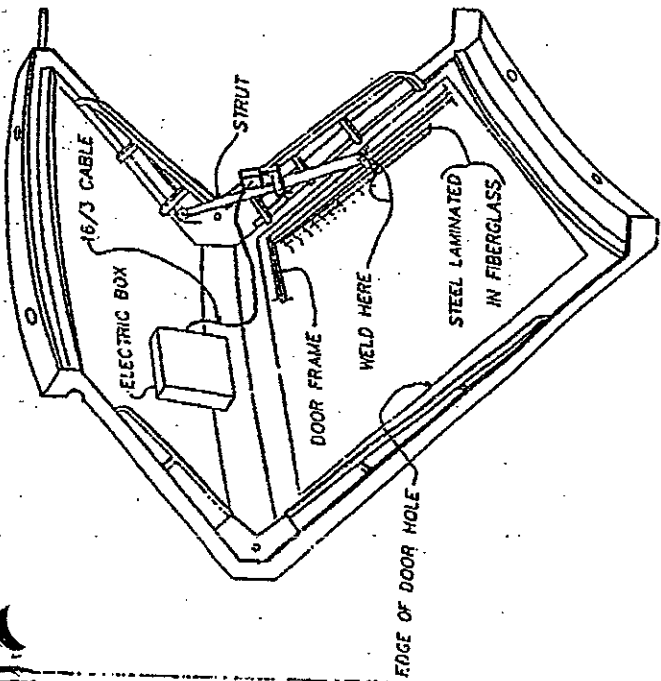
The second type of door catch is a telescoping rod and pipe arrangement. This is welded on the side of the door frame and operates with a solenoid in the same manor as the first door catch does except that it will catch the door at any position on the way up. This is the preferred type of catch.

WARNING!

INSTALLATION OF THE DOOR CATCH DOES NOT RELIEVE THE REQUIREMENT OF MAINTAINING THE DOOR OPENER AND CABLES.

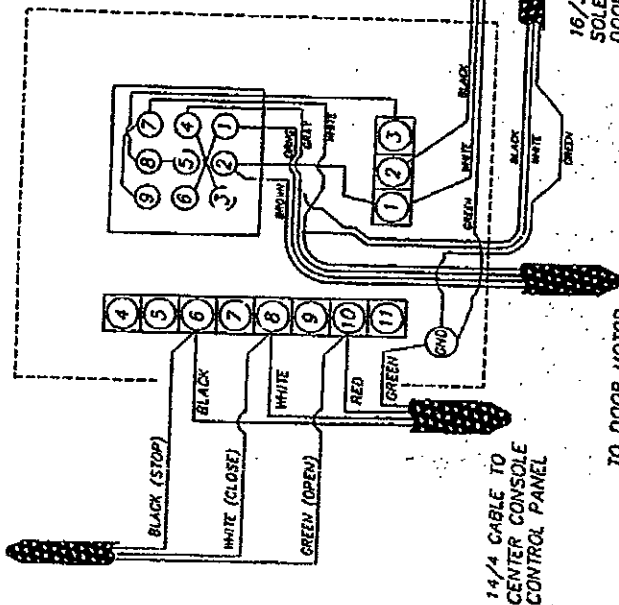
Installation:

1. Check the operation of the door opener. The door must stop immediately when the close button is released. Pull down on the door to see if it slips down. If it does slip down, adjust the clutch and brake until it will stay in position when the button is released.
2. Weld the brackets to the side of the door frame as shown on the enclosed drawing.
3. Connect the wires to the door opener as shown on the same drawing.
4. Test the operation.
The solenoid will operate only while the door is being lowered.
5. If the door catch will not release, check the adjustment on the clutch and brake on the door opener. If the door slips down or coasts down, the door catch will not release. Adjust the clutch and brake to keep this from happening.

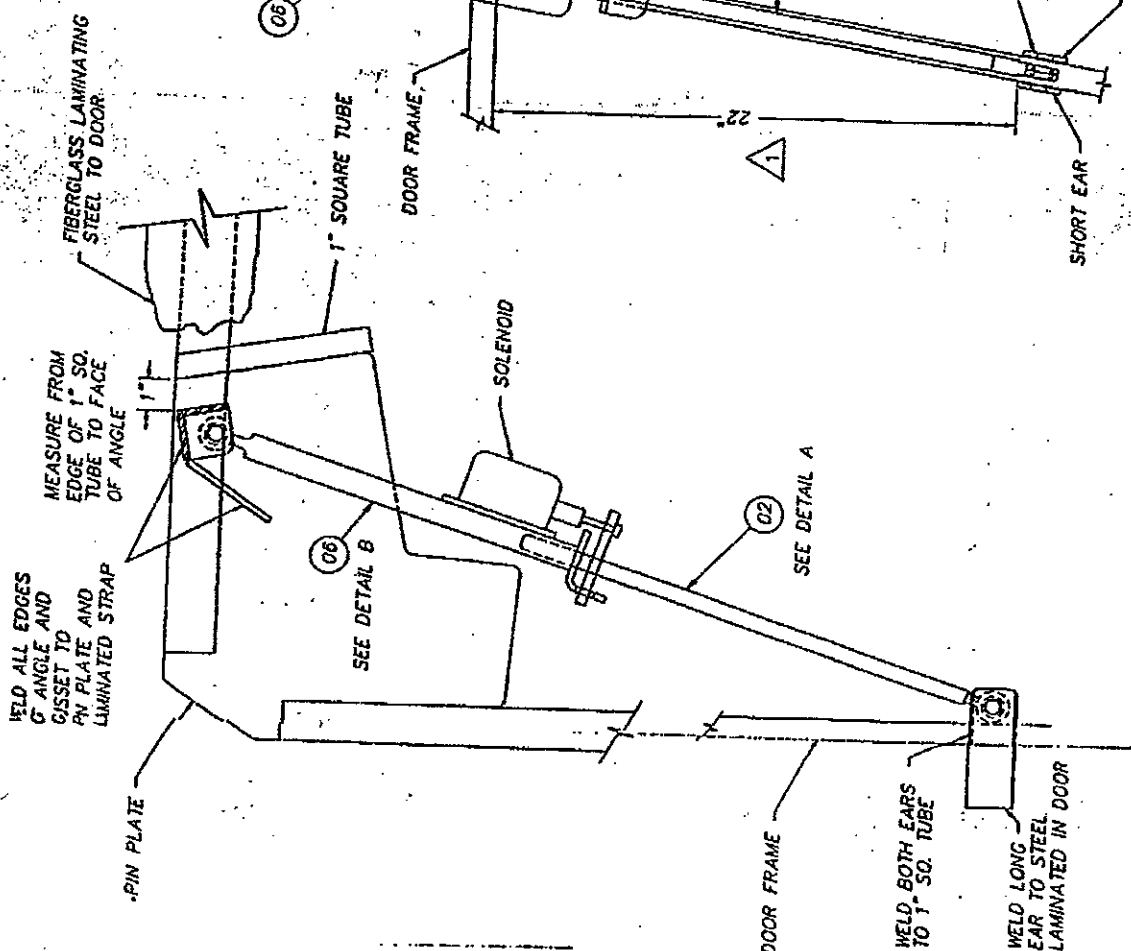


ISOMETRIC OF DOOR PANEL WITH STRUT INSTALLED

TO DOOR SWITCH



ELECTRICAL BOX DETAIL
NOT TO SCALE



SEE DETAIL A

SEE DETAIL B

INSTALLATION NOTES:

- 1 REMOVE FIBERGLASS FROM INDICATED AREA.
- 2 WELD LOWER EARS TO SIDE MEMBER OF DOOR FRAME AS SHOWN.
- 3 WELD 2" x 2" ANGLE AND GUSSET TO PIN PLATE AS SHOWN.

CONFIDENTIAL INFORMATION
The information and data contained herein is proprietary and is submitted in confidence, and shall not be distributed, used or duplicated for any purpose whatsoever without the prior written permission of FortViv, Inc. (FortViv, Inc., One World Plaza, P.O. Box 1472, Broomfield, Colorado 80111). This legend shall be marked on any reproduction based in whole or in part. Property of this document shall be determined by the location of the conductors etc. etc.

JUN 24 1953

WISDOM INDUSTRIES
Marino, CO 80741
FORM 3-1-50
REVISED BY
DATE 4-1-51
DRAWN BY
CHECKED BY
APPROVED BY

1/2" CHANGE DIMENSION AND ADDED MARK