

Sizzler Magic Carpet

(303) 522-7515



P. O. Box 1794

STERLING, COLO. 80781

September 21, 1978

Re: Engineering Change

Dear

We have located a possible fatigue point on the Magic Carpet Life Frame and recommend an immediate inspection of the Lift Frame and the installation of reinforcing gussetts on the Lift Frame. (See Blue Print) Indicated on the Blue Print is the location of where the stress points will be visible. These are generally across the top and the sides of the two lift frame main members.

Four (4) 1/2 by 8 inch plates are to be welded on the inside and outside of the main frame members. The two inside plates are notched so that they fit up into the cylinder support plate and are flush with the bottom and top edge of the tubing. To install the plates, the ride should be raised up, propped with two poles or as many as needed to keep the ride platform up, then disconnect the two lift cylinders from the lift frame, this will make access to the inside of the lift frame much easier and convenient for the Welder. Also two (2) pieces of strap, 2 1/2" X 4" X 1' long should be welded along the bottom of each tube to help reinforce the added plates.

Removing the wires and air line to the center of the ride will prevent having to replace them later and also make it easier to pull them through after all welding is completed.

If you will contact us and let us know where you will be playing, we will send these modifications out immediately at no charge. If you have any further questions about this modification, please feel free to contact me or our Production Manager, Rod Havens, to help you with your questions. We hope that you have had a good season and that this notice will prevent any future down time or inconvenience.

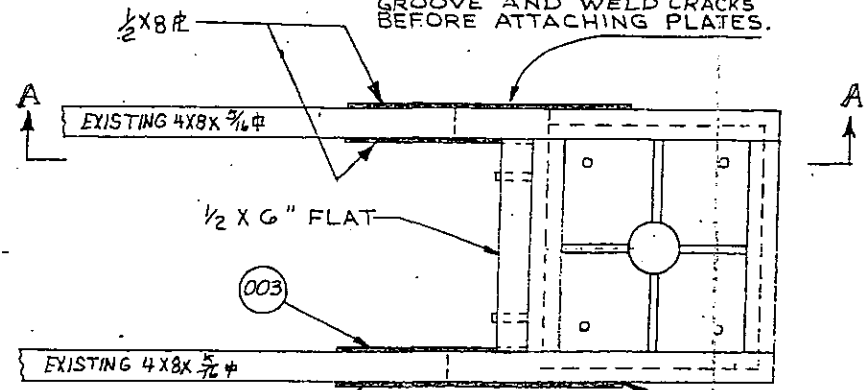
Sincerely,

WISDOM MFG., INC.

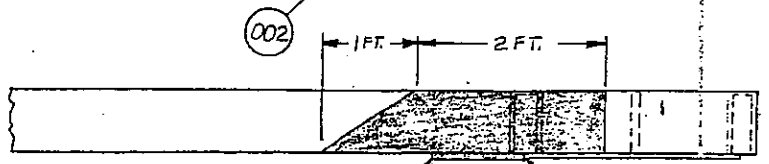
Victor L. Wisdom

VLW:k1b
Encl.

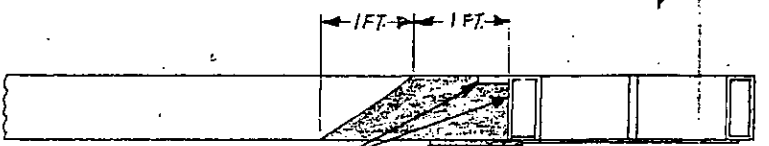
CHECK FOR FRACTURES AT THIS LOCATION ON BOTH MAIN MEMBERS. IF FRACTURES ARE EVIDENT, GROOVE AND WELD CRACKS BEFORE ATTACHING PLATES.



TOP VIEW



SIDE VIEW



SECTION A-A

1/2 x 4 FLAT

BEVEL END TO CLEAR FILLETS. NOTCH UPPER SIDE TO CLR. FLAT WHICH RUNS ACROSS

3/8 CONTINUOUS FILLETS ACROSS BOTH ENDS. CONTINUOUS BUTT WELD FULL LENGTH UPPER & LOWER SIDES OF R APPROX 3/8" DEEP PENETRATION.
TYP ALL ADDED R'S

NOTE: SHADED AREAS INDICATE PIECES TO BE ADDED TO EXISTING FRAME.

CONFIDENTIAL INFORMATION

The information and data contained herein is proprietary and is submitted in confidence, and shall not be disclosed, used or duplicated for any purpose whatsoever without the prior written permission of Wisdom Manufacturing, Inc., P.O. Box 1794, Sterling, Colorado 80751. This legend shall be marked on any reproductions hereof in whole or in part. Receipt of this document shall be deemed to be an acceptance of the conditions specified herein.

RECEIVED
165466 HR215
CALL FOR RISE SAFETY PROGRAM

| | | |
|--------------------------------------------|----------------------------------------------|--------------------------------------------|
| WISDOM FG. INC. MERINO, COLORADO | | CHECK #ISSUE: 9-21-78 DEE RD 9-21-78 |
| SCALE: NONE | APPROVED BY: <i>Roger O. Dake</i> 9-21-78 | DRAWN BY GDM. |
| DATE: 9-21-78 | | REVISED |
| TILT FRAME REINFORCEMENT INSTRUCTIONS | | |
| MAGIC CARPET | 02 | DRAWING NUMBER 317 |

(001)

MAGIC CARPET

1. Bearings should be tight on the seat hanger shaft.
2. Handle bars must be lowered over the customer lap before operating.
3. Center fence skirting must be installed.
4. Hydraulic cylinder lifting pins should be checked yearly.
5. Check for worn hoses and leaks weekly, especially on the lifting cylinders.
6. Hydraulic cylinder mountings should be checked monthly.
7. The interlock switch on the gate must be operational. The ride should run only when the gate is closed.
8. Main pivot bushing mountings should be checked daily for cracks or loose bolts.
9. Check main pivot shaft and seat pivot pins yearly for cracks. Use ultrasonic or magnafluxing.
10. Check main center pole lock nuts for looseness.
11. Check turntable for flatness. It should be a maximum of 3/4 of an inch total up and down travel.
12. Check seat posts and pins for cracks weekly.
13. Check turntable frame and drive rim for cracks.
14. Check trailer frame and lift frame for cracks every week.

