

ZAMPERLA INC.
49 Fanny Road
Parsippany, New Jersey 07054-6545
USA
Phone: 973 334 8133 Fax: 973 334 6880

Bulletin No: 2000MTR-3

Release Date: 10/09/2000

Effective Date: 10/09/2000

Supersedes:

Completion Date: As soon as possible

Page: 1 of 2

SERVICE BULLETIN

Ride Manufacturer: Zamperla Inc.

Affected Production Dates: All

Ride Name: Mini Tea Cup

Affected Serial Nos.: All

Model Number: Mini Tea Cup

Abstract Of Issue:

A hazard exists in the center cup spindle.

Reason For Release:

The steering wheel mounting pin is exposed and has the potential for snagging objects.

Action To Be Taken:

Raise the center spindle guard to close the gaps shown in the diagram.

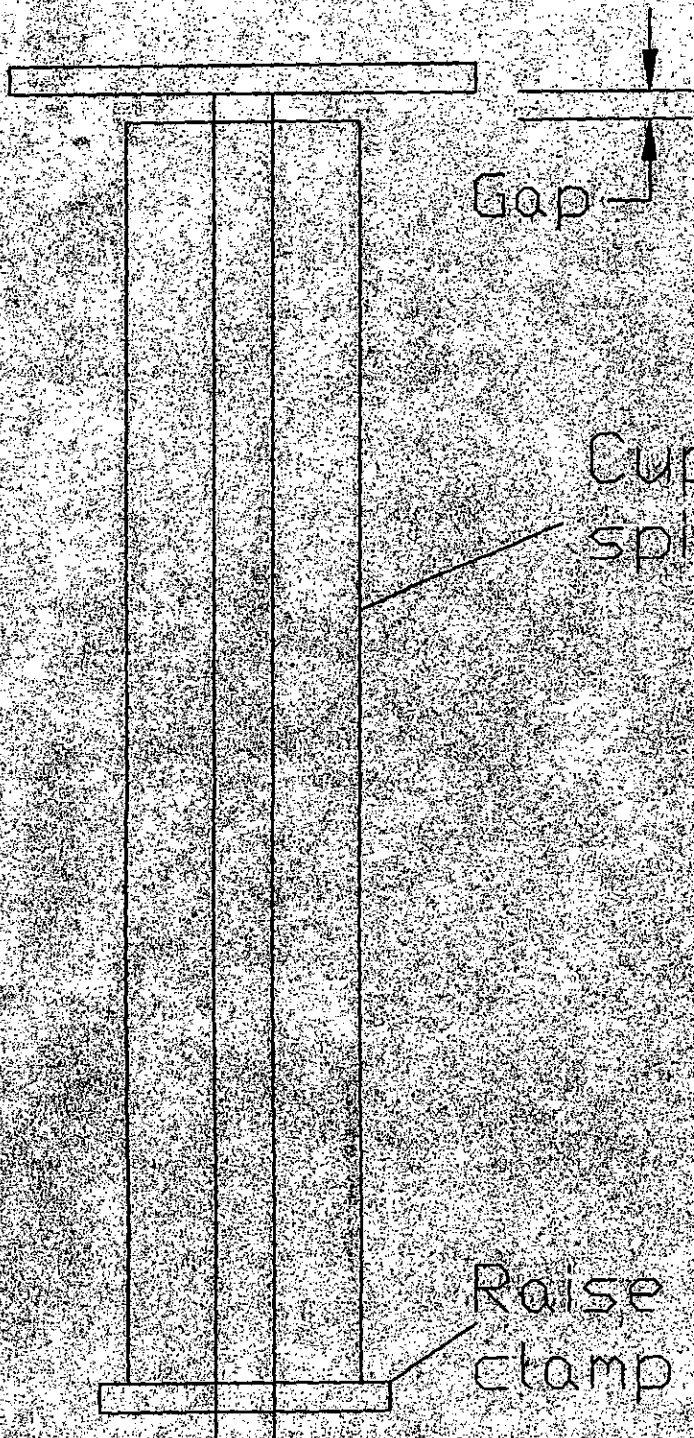
Detail Of Issue:

Attached drawing (page 2)

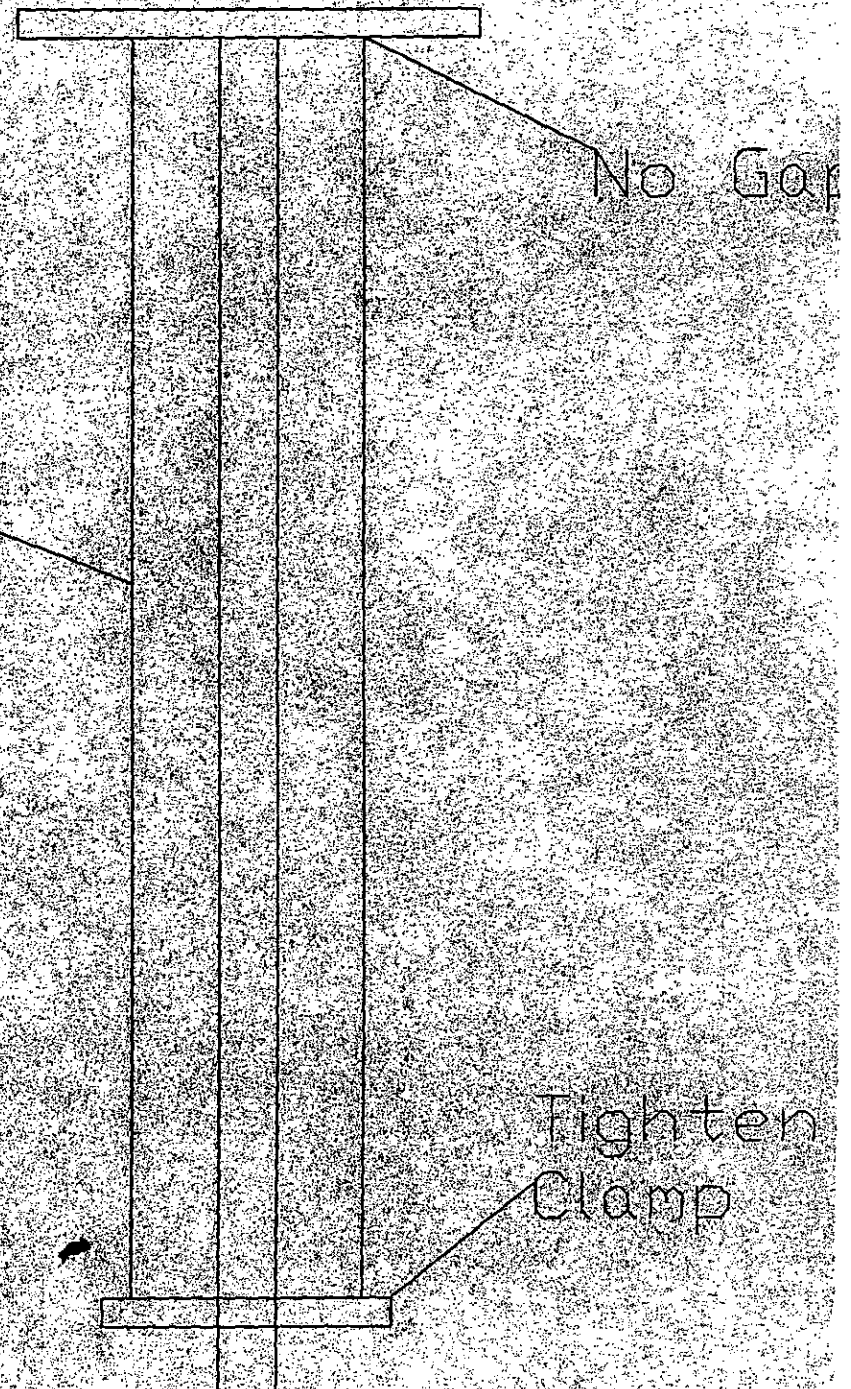
Future Action To Be Taken:

Inspect this area on a regular basis.

BEFORE



After



Cup center
spindle

Raise
clamp

Tighten
Clamp

<p>ZAMPERLA INC. 49 Fanny Road Boonton, New Jersey 07005 USA Phone: 973 334 8133 Fax: 973 334 6880</p>	Bulletin No: 2009MT-01
	Release Date: February 2009
	Effective Date: February 2009
	Supersedes: N/A
	Completion Date: December 2009
Page: 1 of 5	



SERVICE BULLETIN



Ride Manufacturer: Zamperla SPA	Affected Production Dates: See attached list.
Ride Name: Mini-Tea Cup	Affected Serial Nos.: See attached list.
Model Number: Mini-Tea Cup (P/M Only)	

Abstract Of Issue:
Add seat belts to the gondolas of the ride.

Reason For Release:
To assist in keeping riders properly seated in gondola during ride operation.

Action To Be Taken:
Install seat belts to the six (6) gondolas of the Mini Tea Cup ride. An installation kit is available for purchasing through the Parts Department at Zamperla Inc.

Detail Of Issue:
Install two (2) seat belts, part number 47000018, to each gondola per attached *Installation Instructions* (pgs. 2 - 4).
Note: Alternative seat belts to Zamperla part number 47000018 may be installed.

Future Action To Be Taken:
Daily inspect seat belts for any fraying of belts. Daily verify that belts lock and unlock properly. Replace any defective or worn parts as necessary.

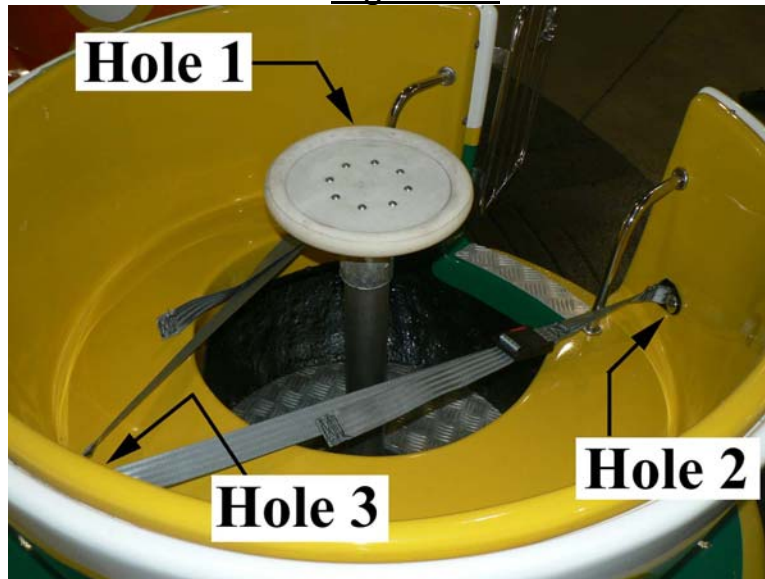
Acronyms:
P/M = Park Model

INSTALLATION INSTRUCTIONS

Step 1 – Drill Holes

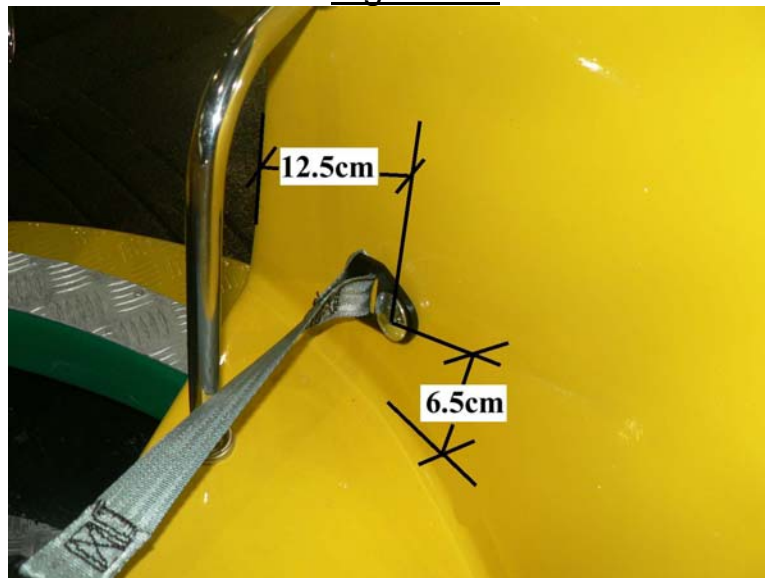
- A. Drill three (3) holes in each teacup at the indicated areas shown in *Figure 1.0*. Each hole should be drilled with a ½” drillbit.

Figure 1.0



- B. Holes 1 & 2 should be drilled per *Figure 1.1*. As shown, Holes 1 & 2 are drilled approx. 12.5cm (5”) away from the edge of the fiberglass opening and 6.5cm (2½”) from top of seat.

Figure 1.1



- C. Hole 3 should be drilled per *Figure 1.2*. As shown, Hole 3 is drilled approx. 6.5cm (2½”) from top of seat and along centerline of cup (between Holes 1 & 2).

Figure 1.2

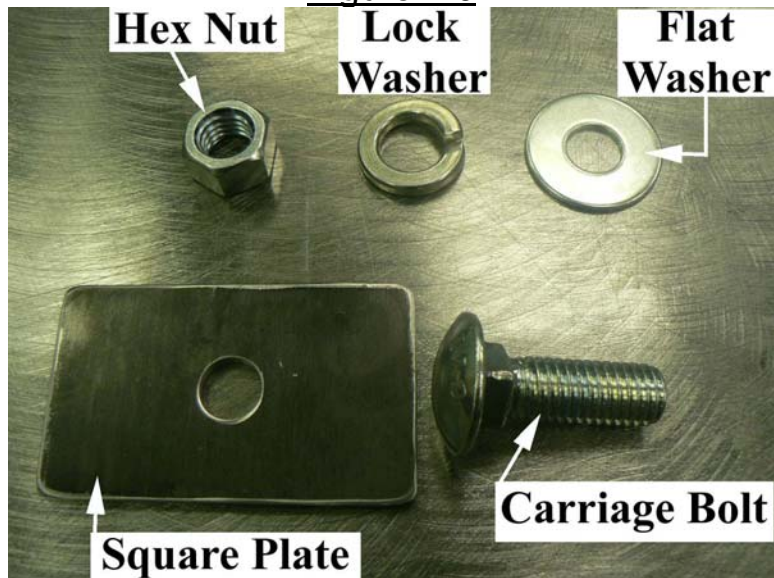


Step 2 – Seatbelt Assembly (parts are included in kit)

Per *Figure 2.0*, the hardware for each hole consists of:

- [1] carriage bolt (½” X 1½” or ½” X 2”)
- [1] square plate (2” X 3” with ½” hole)
- [1] flat washer (7/16”)
- [1] lock washer (9/16”)
- [1] hex nut (½”)

Figure 2.0



- A. For Holes 1 & 2, insert a ½" X 1½" carriage bolt through one of the seatbelt brackets. Next, insert into the drilled hole. On the backside, behind the fiberglass, place (in this order) the square plate, flat washer, lock washer, and hex nut. Be careful not to overtighten. Overtightening may damage the fiberglass.
- B. Per *Figure 2.1*, insert the ½" X 2" carriage bolt through two (2) seatbelt brackets and into Hole 3. The backside assembly is the same as for Holes 1 & 2 [Refer to Step 2A].

Figure 2.1

