

ZAMPERLA INC.  
49 Fanny Road  
Parsippany, New Jersey 07054-0598  
USA  
Phone: 973 334 8133 Fax: 973 334 6880

Bulletin No: 97 SA1
Release Date: 12/8/97
Effective Date: 12/8/97
Supersedes:
Completion Date: Before riding passengers
Page: 1 of 2

## SERVICE BULLETIN

Ride Manufacturer: Zamperla Inc.	Affected Production Dates: All
Ride Name: Samba	Affected Serial Nos.: All
Model Number: Samba	

**Abstract Of Issue:**

Cracks have been found in the welds located at the center column base plate junction and in the lower center frame structure. See areas indicated on the accompanying diagram.

**Reason For Release:**

Same.

**Action To Be Taken:**

Magnetic particle testing by a certified NDT technician

**Detail Of Issue:**

If cracks have been detected in the above mentioned welds and confirmed, please contact Zamperla Inc. for Notification of repair procedure.

**Future Action To Be Taken:**

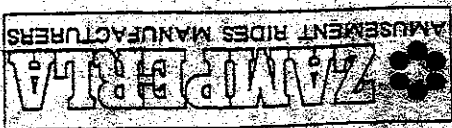
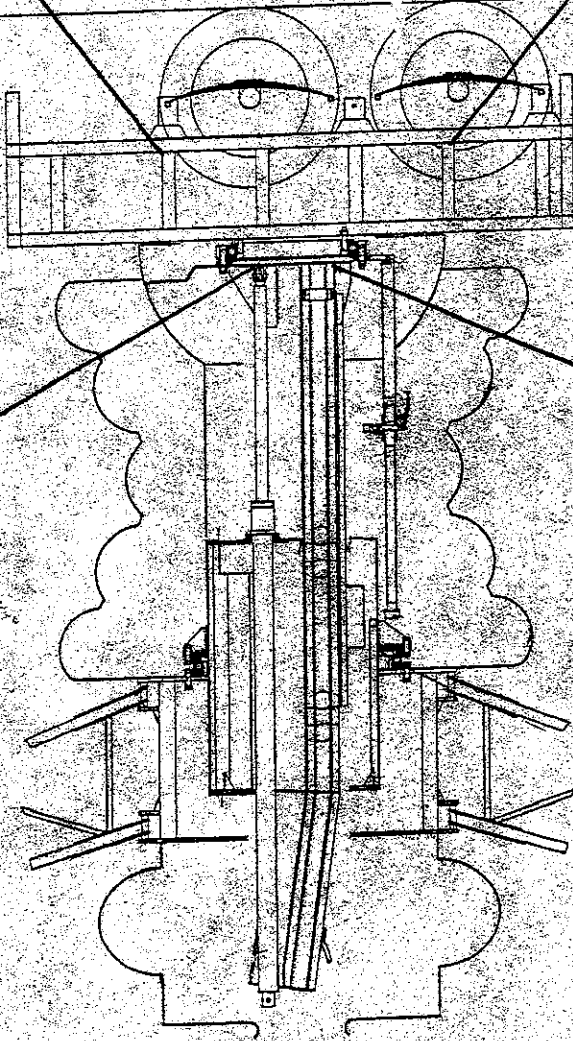
Magnetic particle testing by a certified NDT technician annually.

LOWER FRAMES WELDS

Inspect the lower frame welds here

Column joint  
Flange welds

Inspect the column flange  
joint welds here at the base



ASSEMBLY  
ASSEMBLY

TAB	ed
TAV	